

Johann Sebastian Bach - Menuet PTA

♩ = 151,998398

STRINGS

STRINGS

STRINGS

A.PIANO 1

A.PIANO 1

6

STRINGS

STRINGS

STRINGS

A.PIANO 1

A.PIANO 1

10

STRINGS

STRINGS

STRINGS

A.PIANO 1

A.PIANO 1

13

STRINGS

STRINGS

STRINGS

A.PIANO 1

A.PIANO 1

17

STRINGS

STRINGS

STRINGS

A.PIANO 1

A.PIANO 1

21

STRINGS

STRINGS

STRINGS

A.PIANO 1

A.PIANO 1

24

STRINGS

STRINGS

STRINGS

A.PIANO 1

A.PIANO 1

27

STRINGS

STRINGS

STRINGS

A.PIANO 1

A.PIANO 1

30

STRINGS

STRINGS

STRINGS

A.PIANO 1

A.PIANO 1

33

STRINGS

STRINGS

STRINGS

A.PIANO 1

A.PIANO 1

37

STRINGS

STRINGS

A.PIANO 1

A.PIANO 1

40

STRINGS

STRINGS

A.PIANO 1

A.PIANO 1

44

STRINGS

STRINGS

A.PIANO 1

A.PIANO 1

48

STRINGS

STRINGS

A.PIANO 1

A.PIANO 1

52

STRINGS

STRINGS

A.PIANO 1

A.PIANO 1

55

STRINGS

STRINGS

STRINGS

A.PIANO 1

A.PIANO 1

59

STRINGS

STRINGS

A.PIANO 1

A.PIANO 1

62

STRINGS

STRINGS

A.PIANO 1

A.PIANO 1

66

STRINGS

STRINGS

A.PIANO 1

A.PIANO 1

70

STRINGS

STRINGS

A.PIANO 1

A.PIANO 1

74

STRINGS

STRINGS

A.PIANO 1

A.PIANO 1

77

STRINGS

STRINGS

STRINGS

A.PIANO 1

A.PIANO 1

$\text{♩} = 140,0128175,829224 \text{ ♩} = 96,035480686$

STRINGS

Johann Sebastian Bach - Menuet PTA

♩ = 151,998398

3

9

3 3 3 2

17

3 3 3 3 3 3 3

24

3 3 3 3 3 3 3

31

2 20 3

56

20 3 3

♩ = 140,01287829224 = 96,0924836

2

STRINGS

61

Musical notation for strings, measures 61-66. The notation is in bass clef with a 3/4 time signature. Measure 61 starts with a triplet of eighth notes. Measure 62 has a quarter note followed by a triplet of eighth notes. Measure 63 has a quarter note followed by a triplet of eighth notes. Measure 64 has a quarter note followed by a fermata. Measure 65 has a quarter rest followed by a triplet of eighth notes. Measure 66 has a quarter rest followed by a triplet of eighth notes.

67

Musical notation for strings, measures 67-72. The notation is in bass clef with a 3/4 time signature. Measure 67 has a quarter rest followed by a triplet of eighth notes. Measure 68 has a quarter rest followed by a quarter note. Measure 69 has a quarter note followed by a quarter note. Measure 70 has a quarter note followed by a quarter note. Measure 71 has a quarter note followed by a quarter note. Measure 72 has a quarter note followed by a quarter note.

73

Musical notation for strings, measures 73-75. The notation is in bass clef with a 3/4 time signature. Measure 73 has a quarter note followed by a quarter note. Measure 74 has a quarter note followed by a quarter note. Measure 75 has a quarter note followed by a quarter note.

76

$\text{♩} = 140, 0, 2, 3, 7, 8, 5, 8, 2, 9, 2, 2, 4$ $\text{♩} = 96, 0, 0, 5, 2, 8, 0, 6, 8, 6$

Musical notation for strings, measures 76-78. The notation is in bass clef with a 3/4 time signature. Measure 76 has a quarter note followed by a quarter note. Measure 77 has a quarter note followed by a quarter note. Measure 78 has a quarter note followed by a quarter note.

STRINGS

Johann Sebastian Bach - Menuet PTA

♩ = 151,998398

2

7

13

19

24

30

37

44

51

59

V.S.

2

STRINGS

66

Musical notation for strings, measures 66-72. The notation is on a single bass clef staff. Measures 66-72 consist of a rhythmic pattern of eighth notes with a grace note, followed by a melodic line of eighth notes. A double bar line is present at the end of measure 72.

73

♩ = 140, 152, 879, 2206, 895, 480686

Musical notation for strings, measures 73-74. The notation is on a single bass clef staff. Measure 73 contains a melodic line of eighth notes, including a sharp sign. Measure 74 contains a triplet of eighth notes, indicated by a '3' above the notes. The piece ends with a double bar line.

Johann Sebastian Bach - Menuet PTA

A.PIANO 1

♩ = 151,998398

2

7

12

16

21

25

29

33

38

42

V.S.

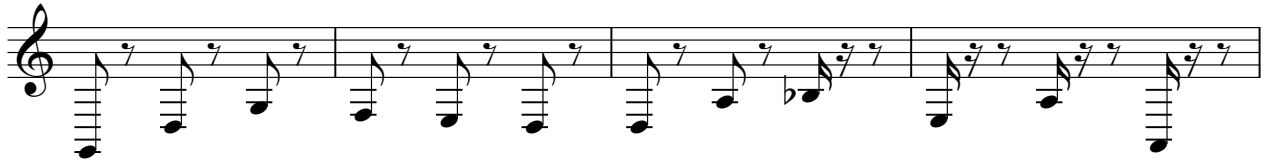
47



52



57



61



66



72



76

$\text{♩} = 140,012878 = 115,826,025482 \text{ ♩} = 80,210686$



A.PIANO 1

Johann Sebastian Bach - Menuet PTA

♩ = 151,998398

2

7

12

17

23

28

33

39

45

51

V.S.

57



63



70



75

♩ = 140, 01285, 829294, 09586, 210686

