

michael george - jes2chld

♩ = 85,000046

Flute

Drums

Bass

♩ = 85,000046

Strings

3

Flute

Drums

Bass

Strings

6

Flute

Drums

Bass

Strings

9

Flute

Drums

Bass

Strings

12

Flute

Drums

Bass

Strings

Detailed description: This image shows a musical score for a piece in 3/4 time with a key signature of three sharps (F#, C#, G#). The score is divided into three systems, each containing four staves: Flute, Drums, Bass, and Strings. The first system covers measures 6-8, the second system covers measures 9-11, and the third system covers measures 12-14. The Flute part features melodic lines with slurs and accents. The Drums part provides a steady rhythmic accompaniment with 'x' marks indicating hits. The Bass part has a walking bass line with eighth and quarter notes. The Strings part consists of block chords in the left hand.

15

Flute

Drums

Electric Melody

Bass

Strings

Detailed description: This system contains measures 15, 16, and 17. The Flute part begins in measure 15 with a half note G5, followed by a quarter note F#5, and then eighth notes E5 and D5. The Drums part features a consistent eighth-note pattern of 'x' marks. The Electric Melody part is silent in measures 15 and 16, then enters in measure 17 with a quarter note G5, followed by eighth notes F#5 and E5. The Bass part starts with a dotted quarter note G2, followed by eighth notes F#2 and E2. The Strings part provides harmonic support with chords: G2-B2 in measure 15, G2-B2-E2 in measure 16, and G2-B2-E2 in measure 17.

18

Drums

Electric Melody

Bass

Strings

Detailed description: This system contains measures 18, 19, and 20. The Drums part continues with the eighth-note 'x' pattern. The Electric Melody part begins in measure 18 with a dotted quarter note G5, followed by eighth notes F#5 and E5. The Bass part continues with a dotted quarter note G2, followed by eighth notes F#2 and E2. The Strings part provides harmonic support with chords: G2-B2 in measure 18, G2-B2-E2 in measure 19, and G2-B2-E2 in measure 20.

21

Drums

Electric Melody

Bass

Strings

This system covers measures 21 to 23. The drums maintain a steady eighth-note pattern. The electric melody features a sequence of eighth notes that concludes with a chord. The bass line provides a rhythmic accompaniment with eighth notes. The strings play block chords.

24

Drums

Electric Melody

Bass

Strings

This system covers measures 24 to 26. The drums maintain a steady eighth-note pattern. The electric melody continues with eighth notes and ends with a chord. The bass line follows with eighth notes. The strings play block chords.

27

Drums

Electric Melody

Bass

Strings

This system covers measures 27 to 29. The drums maintain a steady eighth-note pattern. The electric melody continues with eighth notes and ends with a chord. The bass line follows with eighth notes. The strings play block chords.

30

Drums

Electric Melody

Bass

Strings

33

Drums

Electric Melody

Bass

Strings

35

Drums

Electric Melody

Bass

Strings

37

Drums

Electric Melody

Bass

Strings

Detailed description: This system of music covers measures 37 and 38. The Drums part features a consistent pattern of eighth notes with 'x' marks above them, indicating cymbal hits. The Electric Melody part is in a key with three sharps (F#, C#, G#) and contains a triplet of eighth notes in the first measure of measure 37, followed by eighth and sixteenth notes. The Bass part consists of a steady eighth-note line. The Strings part is mostly silent, with a few notes in the first and third measures.

39

Drums

Electric Melody

Bass

Strings2

Strings

Detailed description: This system of music covers measures 39 and 40. The Drums part continues with the same eighth-note pattern. The Electric Melody part features a melodic line with eighth and sixteenth notes, including a slur over a group of notes in measure 39. The Bass part continues with its eighth-note line. The Strings2 part has a few notes in measure 39. The Strings part has a few notes in measure 39.

42

Drums

Electric Melody

Bass

Strings

45

Drums

Electric Melody

Bass

Strings

48

Drums

Electric Melody

Bass

Strings

51

Drums

Electric Melody

Bass

Strings

54

Drums

Electric Melody

Bass

Strings

57

Flute

Drums

Bass

Strings

60

Flute

Drums

Bass

Strings

63

Flute

Drums

Bass

Strings

66

Flute

Drums

Bass

Strings

69

Flute

Drums

Bass

Strings

72

Flute

Drums

Electric Melody

Bass

Strings

75

Drums

Electric Melody

Bass

Strings

78

Drums

Electric Melody

Bass

Strings

81

Drums

Electric Melody

Bass

Strings

84

Drums

Electric Melody

Bass

Strings

87

Drums

Electric Melody

Bass

Strings

90

Drums

Electric Melody

Bass

Strings

93

Drums

Electric Melody

Bass

Strings

95

Drums

Electric Melody

Bass

Strings2

Strings

98

Drums

Electric Melody

Bass

Strings

101

Drums

Electric Melody

Bass

Strings

104

Drums

Electric Melody

Bass

Strings

107

Drums

Electric Melody

Bass

Strings

110

Drums

Electric Melody

Bass

Strings

113

Drums

Electric Melody

Bass

Strings

$\text{♩} = 85,000046$

116

Drums

Electric Melody

Bass

Strings

119

Drums

Electric Melody

Bass

Strings

122

Drums

Electric Melody

Bass

Strings

125

Drums

Electric Melody

Bass

Strings

Detailed description: This system covers measures 125 to 127. The Drums part features a steady eighth-note pattern with 'x' marks above each note. The Electric Melody part is mostly silent, with a few notes at the beginning of measure 125. The Bass part plays eighth notes with slurs, including some rests. The Strings part consists of chords and rests, with some notes marked with a sharp sign.

128

Drums

Electric Melody

Bass

Strings2

Strings

Detailed description: This system covers measures 128 to 130. The Drums part continues with the same eighth-note pattern. The Electric Melody part now has a more active line of eighth notes with slurs. The Bass part continues with eighth notes and slurs. The Strings2 part is mostly silent. The Strings part has chords and rests.

131

Drums

Electric Melody

Bass

Strings

This system covers measures 131 to 133. The drums maintain a steady eighth-note pattern. The electric melody features eighth-note runs with slurs, ending with a quarter rest in measure 133. The bass line provides an eighth-note accompaniment. The strings play block chords on a whole note.

134

Drums

Electric Melody

Bass

Strings

This system covers measures 134 to 136. The drums maintain a steady eighth-note pattern. The electric melody continues with eighth-note runs and slurs. The bass line provides an eighth-note accompaniment. The strings play block chords on a whole note.

137

Drums

Electric Melody

Bass

Strings

This system covers measures 137 to 140. The drums maintain a steady eighth-note pattern. The electric melody continues with eighth-note runs and slurs. The bass line provides an eighth-note accompaniment. The strings play block chords on a whole note.

140

Drums

Electric Melody

Bass

Strings

143

Drums

Electric Melody

Bass

Strings

146

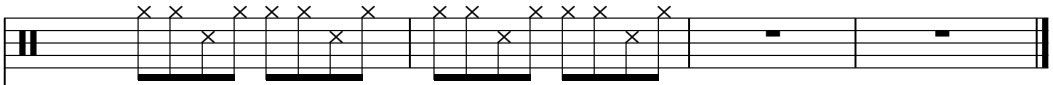
Drums

Bass

Strings

149

Drums



Drum notation for measures 149-152. Measure 149: Snare on 2, 4, 6, 8; Hi-hat on 1, 2, 3, 4, 5, 6, 7, 8. Measure 150: Snare on 2, 4, 6, 8; Hi-hat on 1, 2, 3, 4, 5, 6, 7, 8. Measure 151: Snare on 2, 4, 6, 8; Hi-hat on 1, 2, 3, 4, 5, 6, 7, 8. Measure 152: Snare on 2, 4, 6, 8; Hi-hat on 1, 2, 3, 4, 5, 6, 7, 8.

Bass



Bass notation for measures 149-152. Measure 149: G2, A2, B2, C3. Measure 150: D3, E3, F3, G3. Measure 151: A3, B3, C4, D4. Measure 152: E4, F4, G4, A4.

Strings



String notation for measures 149-152. Measure 149: G2, A2, B2, C3. Measure 150: D3, E3, F3, G3. Measure 151: A3, B3, C4, D4. Measure 152: E4, F4, G4, A4.

michael george - jes2chld

Drums

♩ = 85,000046

5/4

5

9

13

17

21

25

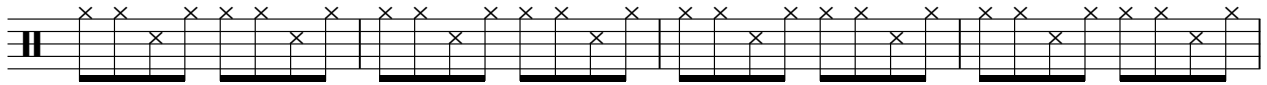
29

33

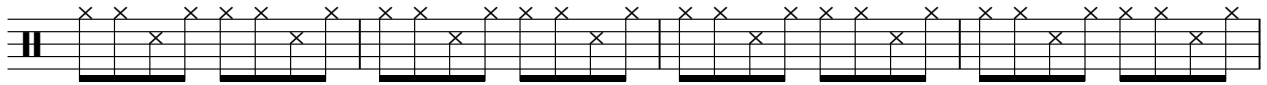
37

V.S.

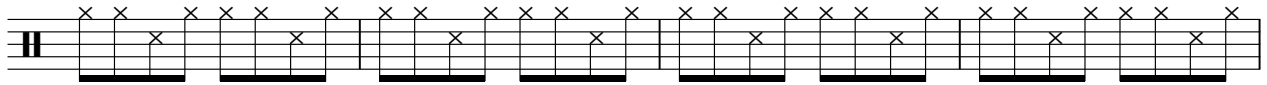
81



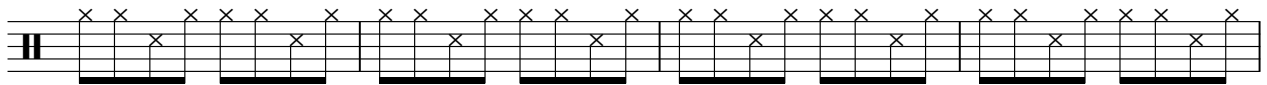
85



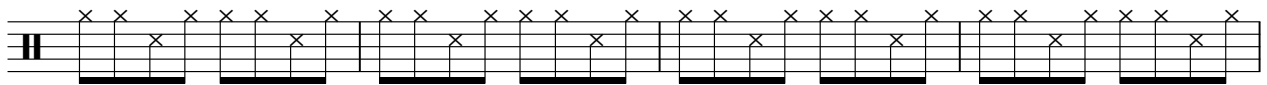
89



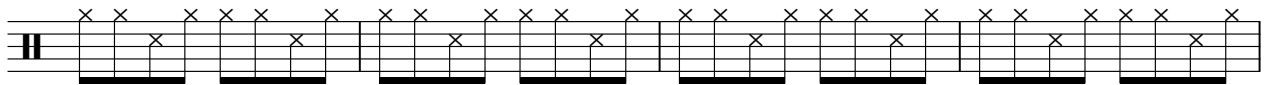
93



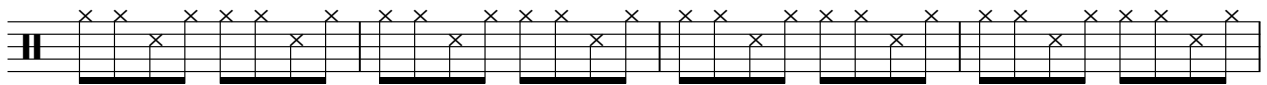
97



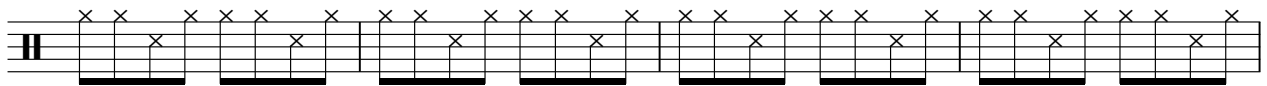
101



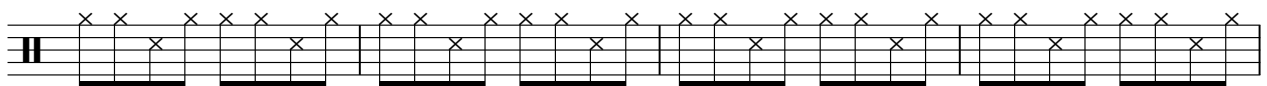
105



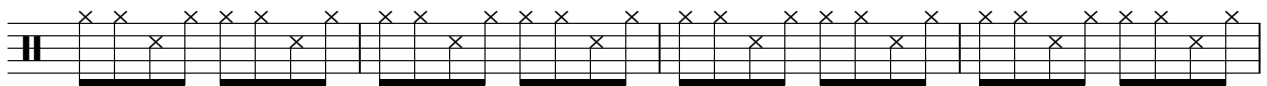
109



113 ♩ = 85,000046

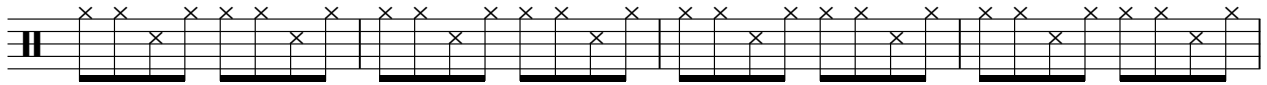


117

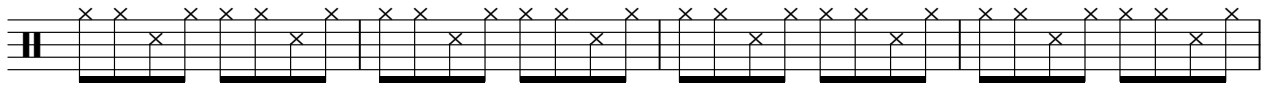


V.S.

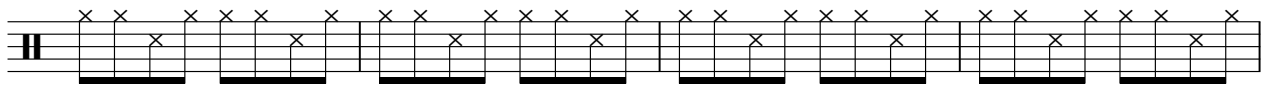
121



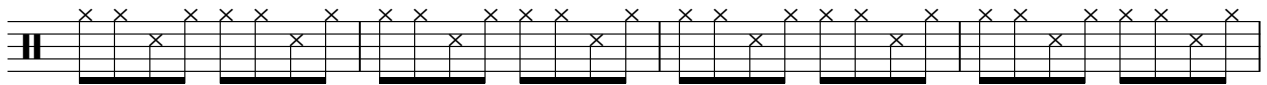
125



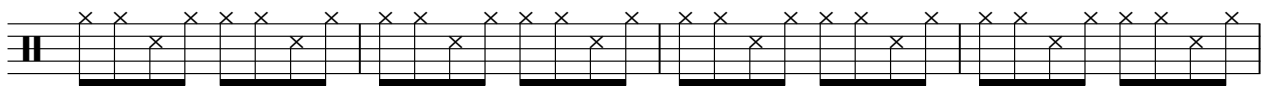
129



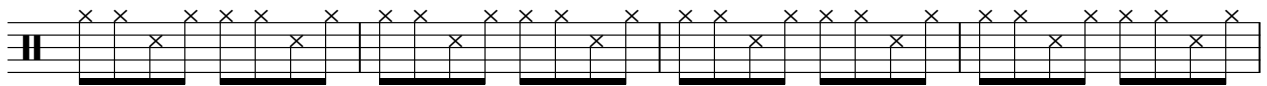
133



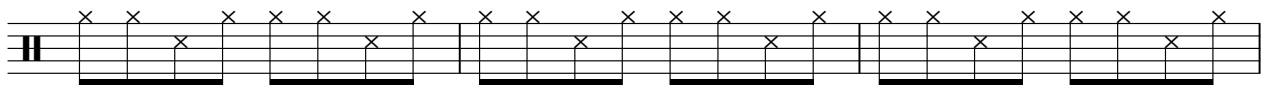
137



141



145



148



Electric Melody

michael george - jes2chld

$\text{♩} = 85,000046$
15

20

25

30

34

38

42

46

51

54

15

Electric Melody

72

77

82

87

91

95

100

105

109

♩ = 85,000046

114

Electric Melody

119

124

130

134

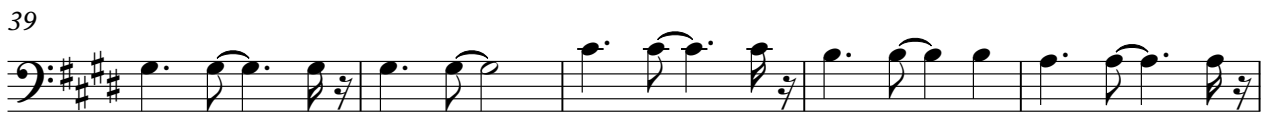
138

141

michael george - jes2chld

Bass

♩ = 85,000046



V.S.

49



54



59



64



69



74



79



84



89



93



98



103



108

113 $\text{♩} = 85,000046$ 

118



123



129



134



139



144



V.S.

4

Bass

148



Strings2

michael george - jes2chld

♩ = 85,000046

40 **55**

Musical notation for Strings2, measures 40-55. The staff is in bass clef with a key signature of two sharps (F# and C#) and a 4/4 time signature. Measures 40 and 55 contain whole rests. Measures 41 and 56 contain dotted half notes.

98

♩ = 85,000046

15 **16** **23**

Musical notation for Strings2, measures 98-23. The staff is in bass clef with a key signature of two sharps (F# and C#) and a 4/4 time signature. Measures 98 and 16 contain whole rests. Measures 99 and 24 contain dotted half notes.

79

87

94

101

108

♩ = 85,000046

115

122

129

136

143

148

Musical notation for strings, measures 148-152. The notation is written on a single staff with a treble clef and a key signature of three sharps (F#, C#, G#). The time signature is not explicitly shown but appears to be 4/4. The music consists of five measures. Measure 148 starts with a treble clef and a key signature of three sharps. The first measure contains a whole note chord consisting of F#, C#, and G# in the bass clef. The second measure contains a whole note chord consisting of F#, C#, and G# in the bass clef. The third measure contains a whole note chord consisting of F#, C#, and G# in the bass clef. The fourth measure contains a whole note chord consisting of F#, C#, and G# in the bass clef. The fifth measure contains a whole note chord consisting of F#, C#, and G# in the bass clef. The notation is written in a style that suggests a string quartet or similar ensemble.