

Mike M - Elton John 6

♩ = 62,000061
Unnamed-003

Unnamed-003

Unnamed-002

Unnamed-001

3

Unnamed-003

Unnamed-002

Unnamed-001

4

Unnamed-003

Unnamed-002

Unnamed-001

5

Unnamed-003

Unnamed-002

Unnamed-001

Copyright © 1997 by Mary K. Pringle
All Rights Reserved

6

Unnamed-003

Unnamed-002

Unnamed-001

This system contains measures 6, 7, and 8. The top staff (Unnamed-003) features a melodic line with eighth and sixteenth notes. The middle staff (Unnamed-002) shows a bass line with dotted rhythms and rests. The bottom staff (Unnamed-001) contains a complex bass line with many beamed notes and rests. Measure 7 includes a triplet in the bottom staff.

7

Unnamed-003

Unnamed-002

Unnamed-001

This system contains measures 9, 10, and 11. The top staff (Unnamed-003) has a melodic line with a long note in measure 9. The middle staff (Unnamed-002) features a bass line with a triplet in measure 10. The bottom staff (Unnamed-001) continues with a complex bass line, including a triplet in measure 10.

8

Unnamed-003

Unnamed-002

Unnamed-001

This system contains measures 12, 13, and 14. The top staff (Unnamed-003) has a melodic line with eighth notes. The middle staff (Unnamed-002) shows a bass line with dotted rhythms. The bottom staff (Unnamed-001) contains a complex bass line with many beamed notes and rests.

9

Unnamed-003

Unnamed-002

Unnamed-001

This system contains measures 15, 16, and 17. The top staff (Unnamed-003) has a melodic line with eighth notes. The middle staff (Unnamed-002) shows a bass line with dotted rhythms. The bottom staff (Unnamed-001) contains a complex bass line with many beamed notes and rests.

10

Unnamed-003

Unnamed-002

Unnamed-001

11

Unnamed-003

Unnamed-002

Unnamed-001

12

Unnamed-003

Unnamed-002

Unnamed-001

14

Unnamed-003

Unnamed-002

Unnamed-001

15

Unnamed-003

Unnamed-002

Unnamed-001

16

Unnamed-003

Unnamed-002

Unnamed-001

17

Unnamed-003

Unnamed-002

Unnamed-001

18

Unnamed-003

Unnamed-002

Unnamed-001

20

Unnamed-003

Unnamed-002

Unnamed-001

21

Unnamed-003

Unnamed-002

Unnamed-001

22

Unnamed-003

Unnamed-002

Unnamed-001

24

Unnamed-003

Unnamed-002

Unnamed-001

25

Unnamed-003

Unnamed-002

Unnamed-001

26

Unnamed-003

Unnamed-002

Unnamed-001

28

Unnamed-003

Unnamed-002

Unnamed-001

30

Unnamed-003

Unnamed-002

Unnamed-001

31

Unnamed-003

Unnamed-002

Unnamed-001

33

Unnamed-003

Unnamed-002

Unnamed-001

35

Unnamed-003

Unnamed-002

Unnamed-001

36

Unnamed-003

Unnamed-002

Unnamed-001

37

Unnamed-003

Unnamed-002

Unnamed-001

38

Unnamed-003

Unnamed-002

Unnamed-001

39

Unnamed-003

Unnamed-002

Unnamed-001

41

Unnamed-003

Unnamed-002

Unnamed-001

42

Unnamed-003

Unnamed-002

Unnamed-001

43

Unnamed-003

Unnamed-002

Unnamed-001

45

Unnamed-003

Unnamed-002

Unnamed-001

46

Unnamed-003

Unnamed-002

Unnamed-001

Mike M - Elton John 6

Unnamed-003

♩ = 62,000061
Unnamed-003



Copyright © 1997 by Mary K. Pringle
All Rights Reserved

V.S.

31



34



37



40



43



46



Mike M - Elton John 6

Unnamed-002

♩ = 62,000061
Unnamed-002

The image displays a guitar tablature for the song 'Mike M - Elton John 6'. It consists of ten staves of music, each starting with a measure number (5, 8, 11, 14, 17, 20, 23, 26, 30). The music is written in 4/4 time, as indicated by the '4/4' time signature at the beginning. The notation includes various rhythmic patterns, such as eighth and sixteenth notes, and rests. There are also several instances of triplets, indicated by a '3' and a bracket. The tablature uses 'x' marks to denote fretted notes on the strings. The overall structure is a continuous sequence of chords and melodic lines.

Copyright © 1997 by Mary K. Pringle
All Rights Reserved

V.S.

33

36

39

42

45

47

Mike M - Elton John 6

Unnamed-001

♩ = 62,000061
Unnamed-001

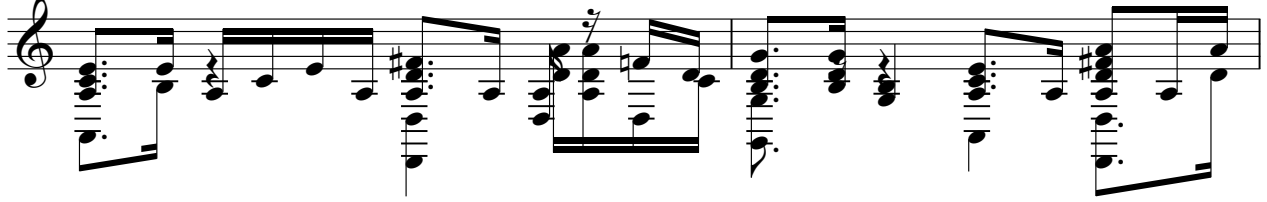
The image displays a musical score for guitar, consisting of ten staves of music. The score is written in 4/4 time and features a complex melodic line with numerous accidentals (sharps, naturals, and flats) and a dense accompaniment of chords and arpeggios. The notation includes various rhythmic values such as eighth and sixteenth notes, as well as rests. The score is numbered 4, 6, 8, 10, 12, 14, 16, 18, and 20 at the beginning of each staff. The key signature is not explicitly stated but appears to be C major or a related key. The score concludes with a double bar line and a key signature change to B-flat major.

Copyright © 1997 by Mary K. Pringle
All Rights Reserved

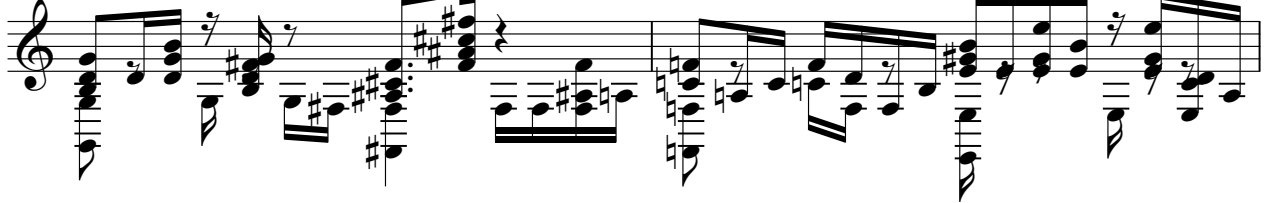
V.S.

A musical score for guitar, consisting of ten staves of music. The staves are numbered 22, 24, 26, 29, 31, 33, 35, 37, 39, and 41. The music is written in a complex, multi-measure style, featuring a variety of rhythmic patterns and chordal textures. The notation includes eighth notes, sixteenth notes, and chords, with some measures containing multiple beams and slurs. The key signature is not explicitly shown, but the notes suggest a key with one sharp (F#). The overall style is intricate and technical, typical of advanced guitar music.

43



45



47

