

Nirvana in utero - rape me lower

♩ = 112,000061

steel

Rape Me muted

3

steel

Rape Me muted

5

trump

steel

Rape Me muted

8

trump

steel

Rape Me muted

11

trump

steel

Rape Me muted

13

trump

drums

steel

dist

pick

Rape Me muted

15

trump

drums

steel

dist

pick

Rape Me muted

17

trump

drums

steel

dist

pick

Rape Me muted

19

trump

drums

steel

dist

pick

Rape Me muted

21

trump

drums

steel

dist

dist

pick

Rape Me muted

23

trump

drums

steel

dist

pick

Rape Me muted

25

trump

drums

steel

dist

pick

Rape Me muted

27

trump

drums

steel

dist

pick

Rape Me muted

29

trump

drums

steel

dist

pick

Rape Me muted

31

trump

drums

steel

dist

pick

Rape Me muted

33

trump

drums

steel

dist

pick

Rape Me muted

35

trump

drums

steel

dist

pick

Rape Me muted

37

trump

drums

steel

dist

pick

Rape Me muted

38

trump

drums

steel

dist

pick

Rape Me muted

39

trump

drums

steel

dist

pick

Rape Me muted

40

trump

drums

steel

dist

dist

pick

Rape Me muted

41

trump

drums

steel

dist

dist

pick

Rape Me muted

42

trump

drums

steel

dist

dist

pick

Rape Me muted

43

trump

drums

steel

dist

dist

pick

Rape Me muted

44

trump

drums

steel

dist

dist

pick

Rape Me muted

45

trump

drums

steel

dist

dist

pick

Rape Me muted

47

drums

steel

dist

dist

pick

Rape Me muted

50

trump

steel

Rape Me muted

52

trump

steel

Rape Me muted

54

trump

steel

Rape Me muted

56

trump

drums

steel

dist

Rape Me muted

58

trump

drums

steel

dist

pick

Rape Me muted

60

trump

drums

steel

dist

pick

Rape Me muted

62

trump

drums

steel

dist

pick

Rape Me muted

64

trump

drums

steel

dist

pick

Rape Me muted

66

trump

drums

steel

dist

pick

Rape Me muted

68

trump

drums

steel

dist

pick

Rape Me muted

70

trump

drums

steel

dist

pick

Rape Me muted

72

trump

drums

steel

dist

pick

Rape Me muted

74

trump

drums

steel

dist

pick

Rape Me muted

77

drums

dist

Nirvana in utero - rape me lower

trump

♩ = 112,000061

5

10

15

19

24

29

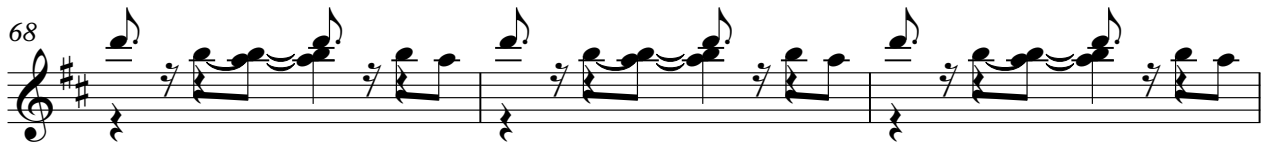
33

37

41

44

4



Nirvana in utero - rape me lower

drums

♩ = 112,000061

12

15

18

21

24

27

30

33

36

39

V.S.

2

drums

41

43

45

48

7

58

61

64

67

70

73

Nirvana in utero - rape me lower

steel

♩ = 112,000061

4

8

12

15

18

21

24

27

30

V.S.

33

36

39

42

44

47

51

54

57

60

63

66

69

72

74

Nirvana in utero - rape me lower

dist

♩ = 112,000061

12

15

18

21

7

30

33

36

39

42

44

V.S.

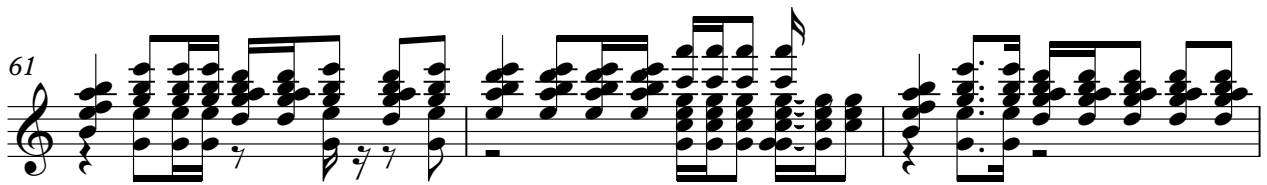
47



58



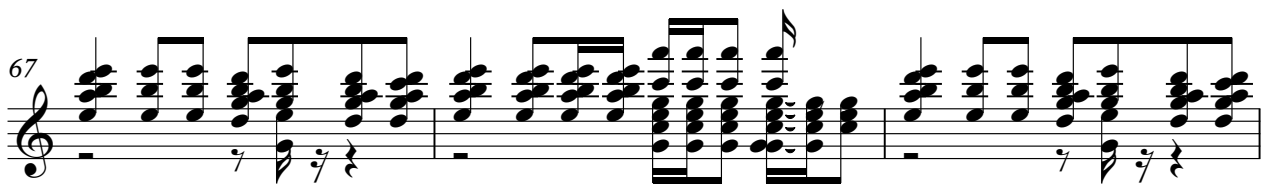
61



64



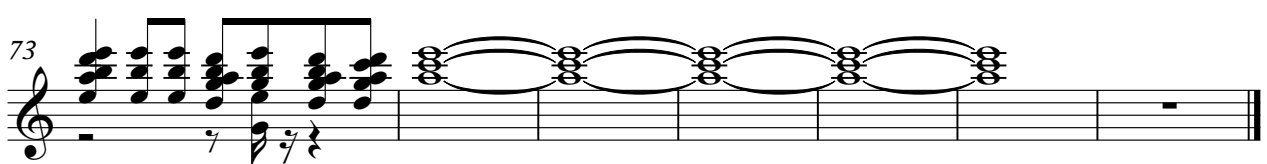
67



70



73



Nirvana in utero - rape me lower

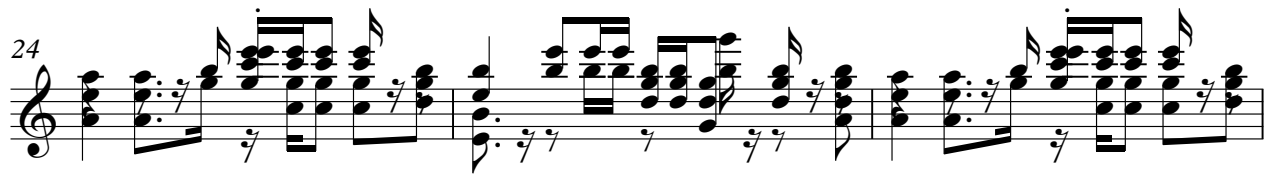
dist

♩ = 112,000061

21



24

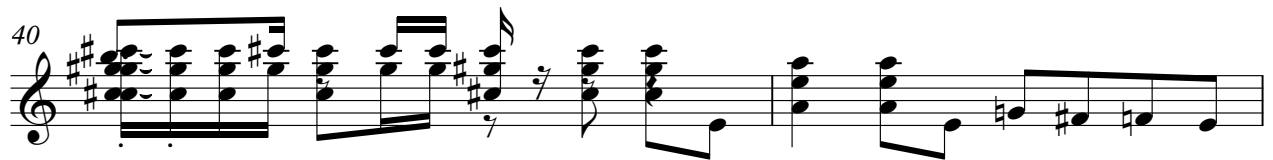


27


11



40



42



44



47

30



Nirvana in utero - rape me lower

pick

♩ = 112,000061

13



17



21



25



29



33



37



41



45



47



8

2

pick

58



62



66



70



73



Nirvana in utero - rape me lower

Rape Me muted

$\text{♩} = 112,000061$

4

8

12

15

18

21

24

27

30

V.S.

Rape Me muted

The image displays a musical score for the song "Rape Me" by Limp Bizkit, specifically a muted guitar part. The score is written in bass clef and consists of ten staves of music, each beginning with a measure number: 33, 36, 39, 42, 44, 47, 51, 54, 57, and 60. The music is characterized by a heavy, rhythmic pattern of chords and single notes, often with a muted sound indicated by the 'muted' instruction. The key signature is one sharp (F#), and the time signature is 4/4. The notation includes various rhythmic values such as eighth and sixteenth notes, as well as rests and dynamic markings like 'mf' and 'f'. The overall style is aggressive and rhythmic, typical of the nu-metal genre.

Rape Me muted

3

63

Measures 63-65 of the bass line. Measure 63 starts with a bass clef and a 7/8 time signature. It features a complex rhythmic pattern with eighth and sixteenth notes, including a triplet of eighth notes. Measure 64 continues this pattern with a key signature change to one sharp (F#). Measure 65 concludes the phrase with a triplet of eighth notes.

66

Measures 66-68 of the bass line. Measure 66 features a dense texture of sixteenth-note chords. Measure 67 has a similar texture with some rests. Measure 68 continues the sixteenth-note chordal pattern.

69

Measures 69-71 of the bass line. Measure 69 continues the sixteenth-note chordal texture. Measure 70 has a similar texture. Measure 71 concludes the phrase with a triplet of eighth notes.

72

Measures 72-73 of the bass line. Measure 72 continues the sixteenth-note chordal texture. Measure 73 concludes the phrase with a triplet of eighth notes.

74

Measure 74 of the bass line. It begins with a long note (likely a whole note) consisting of a complex chord. This is followed by a rest, then a triplet of eighth notes. The measure ends with a final chord and a triplet of eighth notes.

3