

# Paris Sisters (The) - I Love How You Love Me

♩ = 88,000023

"I Love

1961

Sequenced

by MaxS.

Sisters

Paris

Love Me''

How You

♩ = 88,000023

2

"I Love

1961

Sequenced

by MaxS.

Sisters

Paris

Love Me"



3

"I Love

1961

Sequenced

by MaxS.

Sisters

Paris

Love Me"

4

"I Love  
1961  
Sequenced  
by MaxS.  
Sisters  
Paris  
Love Me"



5

"I Love  
1961  
Sequenced  
by MaxS.  
Sisters  
Paris  
Love Me"  
How You

6

1961

Sequenced by MaxS.

Sisters Paris

Love Me"

How You

This musical score covers measures 6 and 7. It features six staves. The top three staves are guitar parts: '1961' (top staff) with a series of 'x' marks indicating muted notes; 'Sequenced by MaxS.' (middle staff) with a melodic line of quarter notes; and 'Love Me"' (bottom staff) with a bass line of chords. The bottom two staves are vocal parts: 'Sisters Paris' (top staff) with a melodic line of quarter notes, and 'How You' (bottom staff) with a melodic line of quarter notes and some rests.



7

1961

Sequenced by MaxS.

Sisters Paris

Love Me"

How You

This musical score covers measures 8 and 9. It features six staves. The top three staves are guitar parts: '1961' (top staff) with a series of 'x' marks; 'Sequenced by MaxS.' (middle staff) with a melodic line of quarter notes; and 'Love Me"' (bottom staff) with a bass line of chords. The bottom two staves are vocal parts: 'Sisters Paris' (top staff) with a melodic line of quarter notes, and 'How You' (bottom staff) with a melodic line of quarter notes and some rests.

8

1961

Sequenced

by MaxS.

Sisters

Paris

Love Me"

How You



9

"I Love

1961

Sequenced

by MaxS.

Sisters

Paris

Love Me"

How You

10

"I Love

1961

Sequenced

by MaxS.

Sisters

Paris

Love Me"



11

"I Love

1961

Sequenced

by MaxS.

Sisters

Paris

Love Me"

12

"I Love

1961

Sequenced

by MaxS.

Sisters

Paris

Love Me"



13

"I Love

1961

Sequenced

by MaxS.

Sisters

Paris

Love Me"

How You

14

"I Love

1961

Sequenced

by MaxS.

Sisters

Paris

Love Me"

How You

The image shows a musical score for guitar, likely for the song "I Love Paris" by Max S. The score is arranged in a system with multiple staves. The top staff is a vocal line in treble clef, starting at measure 14. Below it are three guitar staves: the first is a guitar line with 'x' marks indicating muted notes, the second is a sequenced guitar line with slurs, and the third is another guitar line with 'x' marks. Below these are two more vocal lines: "Sisters" in treble clef and "Paris" in bass clef. The next two staves are "Love Me" in bass clef with chords and "How You" in treble clef with chords. The score ends with a double bar line.



"I Love

Paris Sisters (The) - I Love How You Love Me

♩ = 88,000023

2

3

4

3

9

11

12

14

1961

# Paris Sisters (The) - I Love How You Love Me

♩ = 88,000023

12/4

Measure 1: A guitar staff with a treble clef and a key signature of one flat. The time signature is 12/4. The staff contains a whole note chord with an x above the 12th fret, and a whole note chord with an x above the 4th fret. The notes are G2, B1, D2, E2, G2, B1, D2, E2, G2, B1, D2, E2.

2

Measure 2: A guitar staff with a treble clef and a key signature of one flat. The staff contains a whole note chord with an x above the 12th fret, and a whole note chord with an x above the 4th fret. The notes are G2, B1, D2, E2, G2, B1, D2, E2, G2, B1, D2, E2.

3

Measure 3: A guitar staff with a treble clef and a key signature of one flat. The staff contains a whole note chord with an x above the 12th fret, and a whole note chord with an x above the 4th fret. The notes are G2, B1, D2, E2, G2, B1, D2, E2, G2, B1, D2, E2.

4

Measure 4: A guitar staff with a treble clef and a key signature of one flat. The staff contains a whole note chord with an x above the 12th fret, and a whole note chord with an x above the 4th fret. The notes are G2, B1, D2, E2, G2, B1, D2, E2, G2, B1, D2, E2.

5

Measure 5: A guitar staff with a treble clef and a key signature of one flat. The staff contains a whole note chord with an x above the 12th fret, and a whole note chord with an x above the 4th fret. The notes are G2, B1, D2, E2, G2, B1, D2, E2, G2, B1, D2, E2.

6

Measure 6: A guitar staff with a treble clef and a key signature of one flat. The staff contains a whole note chord with an x above the 12th fret, and a whole note chord with an x above the 4th fret. The notes are G2, B1, D2, E2, G2, B1, D2, E2, G2, B1, D2, E2.

7

Measure 7: A guitar staff with a treble clef and a key signature of one flat. The staff contains a whole note chord with an x above the 12th fret, and a whole note chord with an x above the 4th fret. The notes are G2, B1, D2, E2, G2, B1, D2, E2, G2, B1, D2, E2.

8

Measure 8: A guitar staff with a treble clef and a key signature of one flat. The staff contains a whole note chord with an x above the 12th fret, and a whole note chord with an x above the 4th fret. The notes are G2, B1, D2, E2, G2, B1, D2, E2, G2, B1, D2, E2.

9

Measure 9: A guitar staff with a treble clef and a key signature of one flat. The staff contains a whole note chord with an x above the 12th fret, and a whole note chord with an x above the 4th fret. The notes are G2, B1, D2, E2, G2, B1, D2, E2, G2, B1, D2, E2.

10

Measure 10: A guitar staff with a treble clef and a key signature of one flat. The staff contains a whole note chord with an x above the 12th fret, and a whole note chord with an x above the 4th fret. The notes are G2, B1, D2, E2, G2, B1, D2, E2, G2, B1, D2, E2.

V.S.

2

1961

11



12



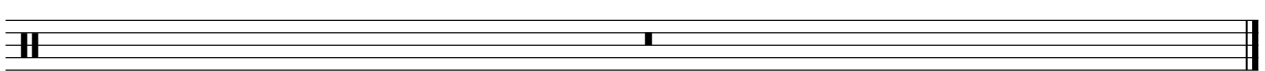
13



14



15



Sequenced

Paris Sisters (The) - I Love How You Love Me

♩ = 88,000023



3



5



7



9



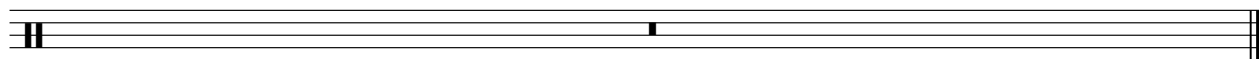
11



13



15



by MaxS.

# Paris Sisters (The) - I Love How You Love Me

♩ = 88,000023

II  $\frac{12}{4}$  - . x x x x x x | x x x x x x x x x x x x x x x x

3 x x x x x x x x x x x x | x x x x x x x x x x x x x x x x

5 x x x x . x x x x x x x x | x x x x x x x x x x x x x x x x

7 x x x x x x x x x x x x | x x x x x x x x x x x x x x x x

9 x x x x . x x x x x x x x | x x x x x x x x x x x x x x x x

11 x x x x x x x x x x x x | x x x x x x x x x x x x x x x x

13 x x x x . x x x x x x x x | x x x x x x x x x x x x x x .

15

# Paris Sisters (The) - I Love How You Love Me

Sisters

♩ = 88,000023

The image displays a musical score for guitar, consisting of ten numbered staves. The music is written in a 12/4 time signature, indicated by the '12' over the '4' at the beginning of the first staff. The tempo is marked as ♩ = 88,000023. The score is written in treble clef. The first staff begins with a whole rest. The music consists of a series of eighth notes, with some staves featuring a sharp sign (#) on the first note of a measure. The notes are primarily in the lower register of the guitar. The staves are numbered 1 through 10, with the first staff being the only one starting with a whole rest.

V.S.

2

# Sisters

11



12



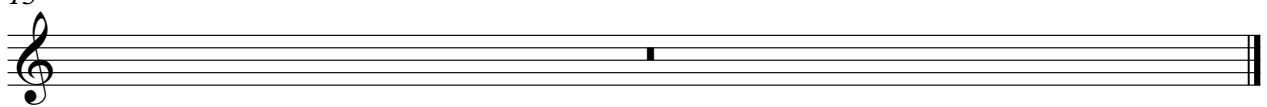
13



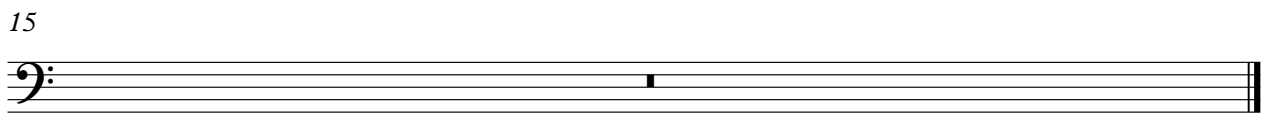
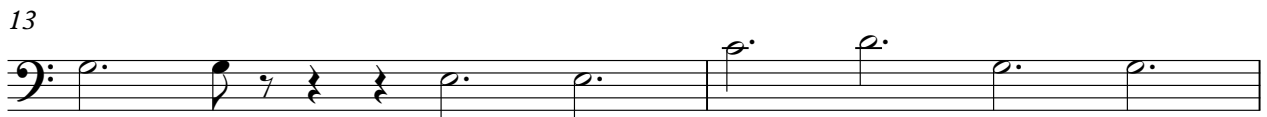
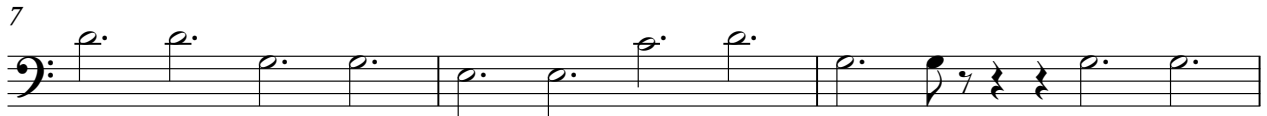
14



15



♩ = 88,000023





Love Me"

Paris Sisters (The) - I Love How You Love Me

♩ = 88,000023

12/4

2

3

4

5

6

7

8

V.S.

2

# Love Me"

9

Musical notation for measures 9 and 10. Measure 9 features a treble clef with a series of chords and a melodic line. Measure 10 features a bass clef with a series of chords.

10

Musical notation for measure 10, bass clef, showing a sequence of chords.

11

Musical notation for measure 11, bass clef, showing a sequence of chords with a sharp sign at the beginning.

12

Musical notation for measure 12, bass clef, showing a sequence of chords with a sharp sign at the end.

13

Musical notation for measures 13 and 14. Measure 13 features a treble clef with a series of chords and a melodic line. Measure 14 features a bass clef with a series of chords.

14

Musical notation for measure 14, bass clef, showing a sequence of chords.

15

Musical notation for measure 15, treble clef, showing a single chord.

How You

Paris Sisters (The) - I Love How You Love Me

♩ = 88,000023

4

6

7

8

10

3

15