

Pauze & Feest Tune`s Diversen Jingles - Tusch 7

♩ = 177,004730

Alto Saxophone

Baroque Trumpet

Percussion

Fretless Electric Bass

♩ = 177,004730

Rock Organ

Orchestra Hit

Solo



4

Alto Sax.

Bar. Tpt.

Perc.

E. Bass

Organ

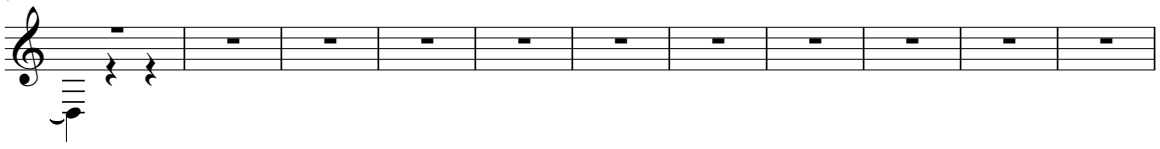
Orch. Hit

Solo

2

Orch. Hit

7



Alto Sax.

18



Alto Sax.

30



Alto Sax.

42



Alto Sax.

54




Alto Sax.

66



Alto Sax.

78



Alto Sax.

90



Alto Sax.

99



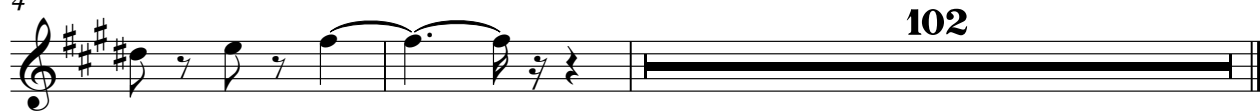
Alto Saxophone

Pauze & Feest Tune`s Diversen Jingles - Tusch 7

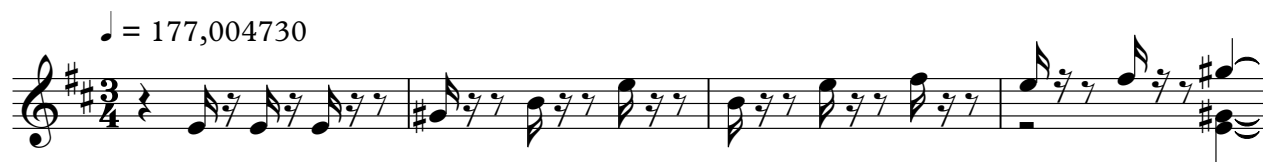
♩ = 177,004730



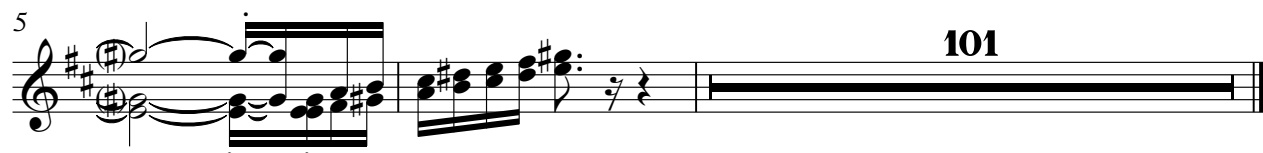
4



♩ = 177,004730



5



101

Percussion

Pauze & Feest Tune`s Diversen Jingles - Tusch 7

♩ = 177,004730

3  
4

6

5

6

3

3

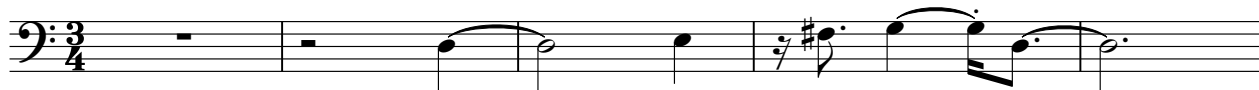
3

6

3

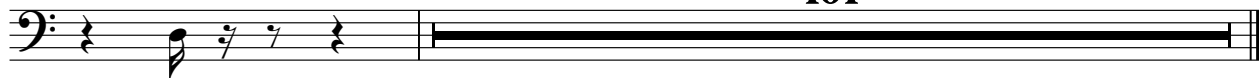
101

♩ = 177,004730



6

101



♩ = 177,004730

101

The musical notation is on a single staff with a treble clef and a 3/4 time signature. It begins with two measures of whole rests. The third measure contains a chord with a sharp sign (F#) and a slur over two notes. The fourth measure contains a similar chord with a slur over two notes. The fifth measure contains a chord with a sharp sign (F#) and a slur over two notes. The sixth measure contains a chord with a sharp sign (F#) and a slur over two notes. The seventh measure contains a chord with a sharp sign (F#) and a slur over two notes. The eighth measure contains a chord with a sharp sign (F#) and a slur over two notes. The final bar of the staff is a thick horizontal line, indicating a full bar rest or a specific organ effect.

Orchestra Hit

Pauze & Feest Tune`s Diversen Jingles - Tusch 7

♩ = 177,004730

**5**

**100**

5

100



Solo

Pauze & Feest Tune`s Diversen Jingles - Tusch 7

♩ = 177,004730

**102**