

Smith & pledger believe - DJrenco

♩ = 144,000229

synth

Bass

Lead

3

synth

Bass

5

synth

Bass

Lead

7

synth

Bass

2

9

synth

Bass

Detailed description: This block shows the first system of music, starting at measure 9. It consists of two staves: a top staff for 'synth' and a bottom staff for 'Bass'. The synth staff uses a treble clef and contains a sequence of eighth notes with stems pointing down, grouped in pairs. The bass staff uses a bass clef and contains a sequence of eighth notes with stems pointing up, also grouped in pairs. The notes in both staves are beamed together to indicate a rhythmic pattern.

11

synth

Bass

Detailed description: This block shows the second system of music, starting at measure 11. It consists of two staves: a top staff for 'synth' and a bottom staff for 'Bass'. The synth staff uses a treble clef and contains a sequence of eighth notes with stems pointing down, grouped in pairs. The bass staff uses a bass clef and contains a sequence of eighth notes with stems pointing up, also grouped in pairs. The notes in both staves are beamed together to indicate a rhythmic pattern.

13

synth

Bass

Detailed description: This block shows the third system of music, starting at measure 13. It consists of two staves: a top staff for 'synth' and a bottom staff for 'Bass'. The synth staff uses a treble clef and contains a sequence of eighth notes with stems pointing down, grouped in pairs. The bass staff uses a bass clef and contains a sequence of eighth notes with stems pointing up, also grouped in pairs. The notes in both staves are beamed together to indicate a rhythmic pattern.

15

synth

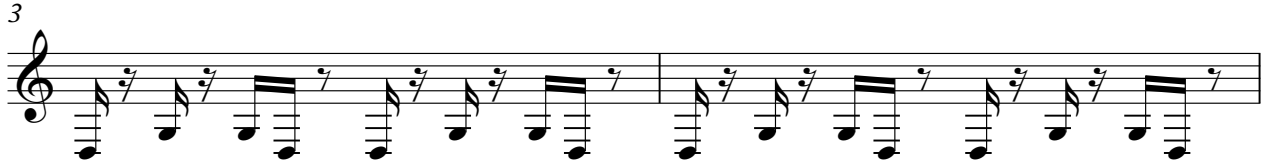
Bass

Detailed description: This block shows the fourth system of music, starting at measure 15. It consists of two staves: a top staff for 'synth' and a bottom staff for 'Bass'. The synth staff uses a treble clef and contains a sequence of eighth notes with stems pointing down, grouped in pairs. The bass staff uses a bass clef and contains a sequence of eighth notes with stems pointing up, also grouped in pairs. The notes in both staves are beamed together to indicate a rhythmic pattern.

synth

Smith & pledger believe - DJrenco

♩ = 144,000229



Smith & pledger believe - DJrenco

Bass

♩ = 144,000229



4



7



10



13



15



Lead

Smith & pledger believe - DJrenco

♩ = 144,000229

3 11