

Beatles - Here Comes The Sun

Tempo: ♩ = 128,000000

NYLON GTR

BASS&LEAD



MELODY

NYLON GTR

SLOWSTRING

BASS&LEAD



12

SNARE DRUM

BASS DRUM

CLOSED H.H

OPEN HIHAT

LOW TOM

MELODY

NYLON GTR

ACOU BASS

SLOWSTRING

17

SNARE DRUM
BASS DRUM
CLOSED H.H.
OPEN HIHAT
MELODY
NYLON GTR
ACOU BASS
SLOWSTRING



22

SNARE DRUM
BASS DRUM
CLOSED H.H.
OPEN HIHAT
MELODY
NYLON GTR
ACOU BASS
SLOWSTRING

26

SNARE DRUM
BASS DRUM
CLOSED H.H
LOW TOM
MELODY
NYLON GTR
ACOU BASS
SLOWSTRING

Detailed description: This musical score covers measures 26 to 30. It features eight staves: SNARE DRUM, BASS DRUM, CLOSED H.H, LOW TOM, MELODY, NYLON GTR, ACOU BASS, and SLOWSTRING. The drum parts include a steady snare pattern, a bass drum line, and closed hi-hat patterns. The melodic and string parts consist of eighth and sixteenth notes with various accidentals. A double bar line is present at the end of measure 30.



31

SNARE DRUM
BASS DRUM
CLOSED H.H
OPEN HIHAT
LOW TOM
MELODY
NYLON GTR
ACOU BASS
SLOWSTRING
BASS&LEAD

Detailed description: This musical score covers measures 31 to 35. It features nine staves: SNARE DRUM, BASS DRUM, CLOSED H.H, OPEN HIHAT, LOW TOM, MELODY, NYLON GTR, ACOU BASS, SLOWSTRING, and BASS&LEAD. The drum parts include a snare pattern, a bass drum line, closed hi-hat patterns, and an open hi-hat. The melodic and string parts continue with eighth and sixteenth notes. The BASS&LEAD part is a new staff at the bottom, showing a melodic line.

36

SNARE DRUM
BASS DRUM
CLOSED H.H.
OPEN HIHAT
MELODY
NYLON GTR
ACOU BASS
SLOWSTRING
BASS&LEAD



40

SNARE DRUM
BASS DRUM
CLOSED H.H.
OPEN HIHAT
MELODY
NYLON GTR
ACOU BASS
SLOWSTRING
BASS&LEAD

44

SNARE DRUM
BASS DRUM
CLOSED H.H.
LOW TOM
CRASH CYMB
MELODY
NYLON GTR
ACOU BASS
SLOWSTRING



49

SNARE DRUM
BASS DRUM
CLOSED H.H.
OPEN HIHAT
LOW TOM
CRASH CYMB
MELODY
NYLON GTR
ACOU BASS
SLOWSTRING

59

TRUMPET

SNARE DRUM

BASS DRUM

CLOSED H.H.

LOW TOM

CRASH CYMB

MELODY

NYLON GTR

ACOU BASS

SLOWSTRING

67

SNARE DRUM

BASS DRUM

CLOSED H.H.

LOW TOM

CRASH CYMB

HANDCLAP

MELODY

NYLON GTR

ACOU BASS

SYNBASS 2

SYNBASS 1

SLOWSTRING

77

SNARE DRUM

BASS DRUM

CLOSED H.H.

LOW TOM

CRASH CYMB

HANDCLAP

MELODY

NYLON GTR

ACOU BASS

SYNBRASS 1

SLOWSTRING

BRASS 1



85

SNARE DRUM

BASS DRUM

CLOSED H.H.

LOW TOM

CRASH CYMB

HANDCLAP

NYLON GTR

ACOU BASS

BASS&LEAD

89

SNARE DRUM
BASS DRUM
CLOSED H.H
OPEN HIHAT
MELODY
NYLON GTR
ACOU BASS
SLOWSTRING
BASS&LEAD

Detailed description: This block contains the musical score for measures 89 through 93. It features eight staves: SNARE DRUM, BASS DRUM, CLOSED H.H, OPEN HIHAT, MELODY, NYLON GTR, ACOU BASS, and SLOWSTRING. The SNARE DRUM part has a consistent pattern of quarter notes with rests. The BASS DRUM part has a steady eighth-note pattern. The CLOSED H.H part has a consistent eighth-note pattern. The OPEN HIHAT part has a consistent eighth-note pattern. The MELODY part has a melodic line with various intervals and rests. The NYLON GTR part has a complex, multi-fingered pattern. The ACOU BASS part has a steady eighth-note pattern. The SLOWSTRING part has a complex, multi-fingered pattern. The BASS&LEAD part has a melodic line with various intervals and rests.



94

SNARE DRUM
BASS DRUM
CLOSED H.H
OPEN HIHAT
MELODY
NYLON GTR
ACOU BASS
SLOWSTRING
BASS&LEAD

Detailed description: This block contains the musical score for measures 94 through 98. It features eight staves: SNARE DRUM, BASS DRUM, CLOSED H.H, OPEN HIHAT, MELODY, NYLON GTR, ACOU BASS, and SLOWSTRING. The SNARE DRUM part has a consistent pattern of quarter notes with rests. The BASS DRUM part has a steady eighth-note pattern. The CLOSED H.H part has a consistent eighth-note pattern. The OPEN HIHAT part has a consistent eighth-note pattern. The MELODY part has a melodic line with various intervals and rests. The NYLON GTR part has a complex, multi-fingered pattern. The ACOU BASS part has a steady eighth-note pattern. The SLOWSTRING part has a complex, multi-fingered pattern. The BASS&LEAD part has a melodic line with various intervals and rests.

98

SNARE DRUM

BASS DRUM

CLOSED H.H.

MELODY

NYLON GTR

ACOU BASS

SLOWSTRING



103

SNARE DRUM

BASS DRUM

CLOSED H.H.

OPEN HIHAT

LOW TOM

MELODY

NYLON GTR

ACOU BASS

SLOWSTRING

BASS&LEAD

108 ♩ = 127,0002526,000130 ♩ = 124,000252

SNARE DRUM

BASS DRUM

CLOSED H.H.

LOW TOM

MELODY

NYLON GTR

ACOU BASS

SLOWSTRING

BASS&LEAD ♩ = 127,0002526,000130 ♩ = 124,000252



113 ♩ = 123,001228121,001892 ♩ = 120,000000 ♩ = 118,0001060000313 ♩ = 110,000916

SNARE DRUM

BASS DRUM

CLOSED H.H.

LOW TOM

CRASH CYMB

NYLON GTR

ACOU BASS

SLOWSTRING

TRUMPET

Beatles - Here Comes The Sun

♩ = 128,000000

48 3

56

3

66

3 3

78

3 28

112

3

SNARE DRUM

Beatles - Here Comes The Sun

♩ = 128,000000
12

17

23

29

35

41

47

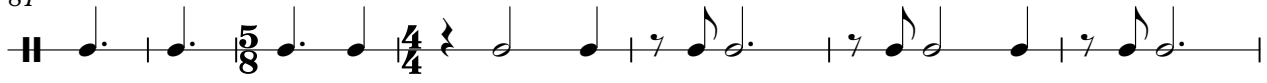
55

65

73

SNARE DRUM

81



88



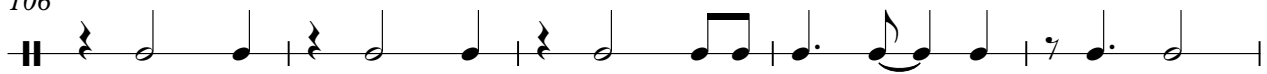
94



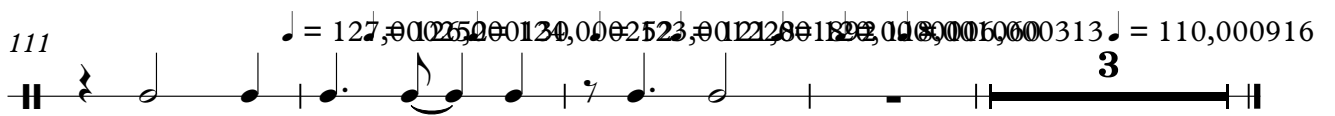
100



106



111



BASS DRUM

Beatles - Here Comes The Sun

♩ = 128,000000

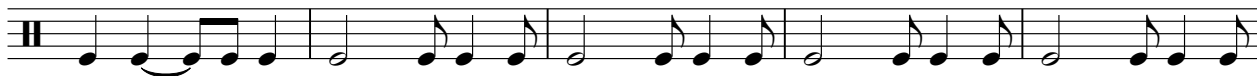
13



18



23



28



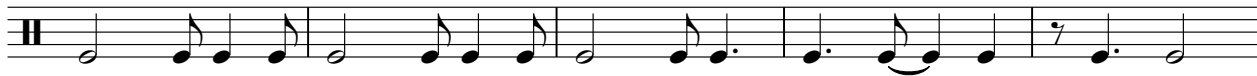
33



38



43



48



56



66



2

BASS DRUM

75



84



90



95



100



105



110

♩ = 127, 006, 690, 239, 0025, 0212, 0618, 02, 08, 00, 000, 003, 03916



CLOSED H.H

Beatles - Here Comes The Sun

♩ = 128,000000

12



16



20




24



28



32



36



40



44



47



2

CLOSED H.H

52

Musical notation for measure 52, featuring a drum set icon and a sequence of eighth notes across various time signatures: 5/8, 4/4, 2/4, 3/8, and 5/8.

59

Musical notation for measure 59, featuring a drum set icon and a sequence of eighth notes across various time signatures: 5/8, 4/4, 2/4, 3/8, 5/8, and 4/4.

66

Musical notation for measure 66, featuring a drum set icon and a sequence of eighth notes across various time signatures: 4/4, 2/4, 3/8, 5/8, and 4/4.

72

Musical notation for measure 72, featuring a drum set icon and a sequence of eighth notes across various time signatures: 4/4, 2/4, 3/8, 5/8, and 4/4.

78

Musical notation for measure 78, featuring a drum set icon and a sequence of eighth notes across various time signatures: 4/4, 2/4, 3/8, 5/8, and 4/4.

84

Musical notation for measure 84, featuring a drum set icon and eighth notes with accents and a fermata.

88

Musical notation for measure 88, featuring a drum set icon and eighth notes with accents.

92

Musical notation for measure 92, featuring a drum set icon and eighth notes with accents.

96

Musical notation for measure 96, featuring a drum set icon and eighth notes with accents.

100

Musical notation for measure 100, featuring a drum set icon and eighth notes with accents and a fermata.

104

Musical notation for measure 104, featuring a double bar line, a 7/8 time signature, and a sequence of notes with 'x' marks above them, indicating a specific guitar technique.

108

Musical notation for measure 108, featuring a double bar line, a sequence of notes with 'x' marks above them, and a curved line above the notes, indicating a specific guitar technique.

112 ♯ = 127,000252 ♯ = 126,024,080252 = 123,001228,001822,0008001060110,010910

Musical notation for measure 112, featuring a double bar line, a sequence of notes with 'x' marks above them, and a curved line above the notes, indicating a specific guitar technique. A large number '3' is positioned above the final part of the notation.

OPEN HIHAT

Beatles - Here Comes The Sun

♩ = 128,000000

15



23

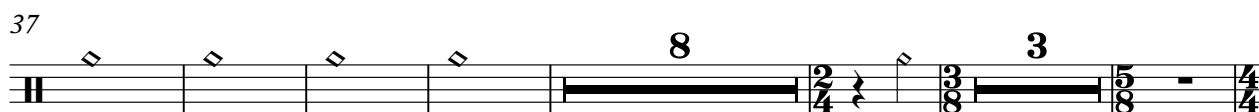
7



37

8

3



54

3

3



66

3

3



78

3

5



92

7

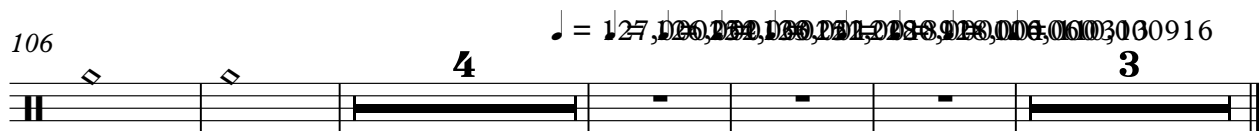


106

4

3

♩ = 127,126,122,120,117,114,111,108,105,102,099,096,093,090,087,084,081,078,075,072,069,066,063,060,057,054,051,048,045,042,039,036,033,030,027,024,021,018,015,012,009,006,003,000,916



LOW TOM

Beatles - Here Comes The Sun

♩ = 128,000000

14

14

32

14

3

53

2

62

2

2

72

2

80

2

88

15

6

111

♩ = 127,000000

♩ = 120,800000

♩ = 110,000916

3

Beatles - Here Comes The Sun

MELODY

♩ = 128,000000

8

13 2

19

24

29 4

37

42 3

50 3

61

71

MELODY

81

91

96

101

107

112

Beatles - Here Comes The Sun

NYLON GTR

♩ = 128,000000

The image displays a musical score for guitar, specifically for nylon guitar (NYLON GTR). The score is written in 4/4 time and consists of ten staves of music. The first staff begins with a tempo marking of ♩ = 128,000000. The music is written in treble clef and features a key signature of one sharp (F#). The notation includes various rhythmic values, including eighth and sixteenth notes, and rests. Measure numbers 5, 9, 13, 17, 21, 25, 29, 33, and 37 are indicated at the beginning of their respective staves. The score concludes with a double bar line and a repeat sign.

V.S.

NYLON GTR

Musical score for Nylon Guitar, measures 41-91. The score is written in treble clef with a key signature of one sharp (F#). The piece features a complex rhythmic structure with frequent changes in time signature, including 3/8, 4/4, 2/4, 5/8, 3/4, and 2/2. The notation includes various guitar-specific techniques such as slurs, ties, and dynamic markings like accents and hairpins. The piece concludes with a double bar line and repeat dots at measure 91.

NYLON GTR

3

95

99

103

107

111

♩ = 127,000 252 126,000 130 124,000 252 123,001 228 121,001 892

114

♩ = 120,000 000 ♩ = 118,001 600 0313 110,000 916

ACOU BASS

Beatles - Here Comes The Sun

♩ = 128,000000

13



17



21



25



30



34



38



42



46



ACOU BASS

51



60



68



77



84



88



92



96



100



105



ACOU BASS

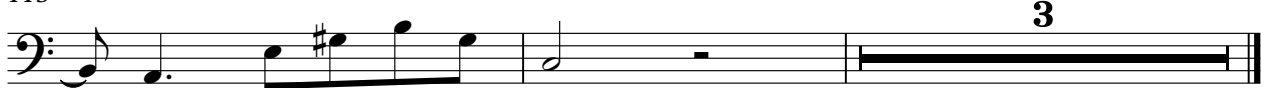
110

♩ = 127,000252 = 126,00024,300252 ³



113

♩ = 123,0002281,001892 ♩ = 120,000108,001060 ♩ = 116,0000916



SYNBRASS 2

Beatles - Here Comes The Sun

♩ = 128,000000

48 3

56

3 3

68

3

78

3 28

112 = 127,000000 123,000000 125,000000 121,800000 118,200000 116,000000 116,000000 116

3

SYNBRASS 1

Beatles - Here Comes The Sun

♩ = 128,000000

48 3

56

3 3

68

3

78

3 28

112 = 127,006,520123,00125,00122,80018920,00118,0001060 = 116,0000916

3

Beatles - Here Comes The Sun

SLOWSTRING

♩ = 128,000000

8

14

20

24

29

36

40

44

51

60

SLOWSTRING

69



78



89



95



99



104



109



112



112 = 127,0025001104,000252 ♯ = 123,00012892 ♯ = 120,000006,000313 = 110,000916

3

Beatles - Here Comes The Sun

BASS&LEAD

♩ = 128,000000

4

9

24

37

9

50

3

3

62

3

3

74

3

3

85

90

95

8

107

3

3

♩ = 127,000000