

Beatles - Rock `n Roll Music 1

MUTED GTR

♩ = 165,002884



5

SNARE DRUM

BASS DRUM

CRASH CYMB

CLOSED H.H

MUTED GTR

ACOU BASS

A.PIANO 2



7

SNARE DRUM

BASS DRUM

CLOSED H.H

MUTED GTR

ACOU BASS

A.PIANO 2



9

SNARE DRUM

BASS DRUM

CLOSED H.H

MUTED GTR

ACOU BASS

A.PIANO 2

11

SNARE DRUM

BASS DRUM

CLOSED H.H

MUTED GTR

ACOU BASS

A.PIANO 2



13

SNARE DRUM

BASS DRUM

CLOSED H.H

MUTED GTR

ACOU BASS

A.PIANO 2

15

SNARE DRUM

BASS DRUM

CLOSED H.H

MUTED GTR

ACOU BASS

A.PIANO 2



17

SNARE DRUM

BASS DRUM

CRASH CYMB

CLOSED H.H

MUTED GTR

ACOU BASS

A.PIANO 2

20

SNARE DRUM

BASS DRUM

CLOSED H.H.

MUTED GTR

ACOU BASS

A.PIANO 2



22

SNARE DRUM

BASS DRUM

CLOSED H.H.

MUTED GTR

ACOU BASS

A.PIANO 1

A.PIANO 2

24

SNARE DRUM

BASS DRUM

CLOSED H.H.

MUTED GTR

ACOU BASS

A.PIANO 2



27

SNARE DRUM

BASS DRUM

CRASH CYMB

CLOSED H.H.

MUTED GTR

ACOU BASS

A.PIANO 2

29

SNARE DRUM

BASS DRUM

CLOSED H.H

MUTED GTR

ACOU BASS

A.PIANO 2



31

SNARE DRUM

BASS DRUM

CLOSED H.H

MUTED GTR

ACOU BASS

A.PIANO 2

33

SNARE DRUM

BASS DRUM

CLOSED H.H

MUTED GTR

ACOU BASS

A.PIANO 2



35

SNARE DRUM

BASS DRUM

CLOSED H.H

MUTED GTR

ACOU BASS

A.PIANO 2

37

SNARE DRUM

BASS DRUM

CLOSED H.H

MUTED GTR

ACOU BASS

A.PIANO 2



39

SNARE DRUM

BASS DRUM

CLOSED H.H

MUTED GTR

ACOU BASS

A.PIANO 1

A.PIANO 2

3

41

SNARE DRUM

BASS DRUM

CRASH CYMB

CLOSED H.H

MUTED GTR

ACOU BASS

A.PIANO 1

A.PIANO 2



44

SNARE DRUM

BASS DRUM

CLOSED H.H

MUTED GTR

ACOU BASS

A.PIANO 1

A.PIANO 2

46

SNARE DRUM

BASS DRUM

CLOSED H.H

MUTED GTR

ACOU BASS

ACOU BASS

A.PIANO 2



49

SNARE DRUM

BASS DRUM

CRASH CYMB

CLOSED H.H

MUTED GTR

ACOU BASS

A.PIANO 2

51

SNARE DRUM

BASS DRUM

CLOSED H.H

MUTED GTR

ACOU BASS

A.PIANO 2



53

SNARE DRUM

BASS DRUM

CLOSED H.H

MUTED GTR

ACOU BASS

A.PIANO 2

55

SNARE DRUM

BASS DRUM

CLOSED H.H

MUTED GTR

ACOU BASS

A.PIANO 2



57

SNARE DRUM

BASS DRUM

CLOSED H.H

MUTED GTR

ACOU BASS

A.PIANO 2

59

SNARE DRUM

BASS DRUM

CLOSED H.H

MUTED GTR

ACOU BASS

A.PIANO 2



61

SNARE DRUM

BASS DRUM

CLOSED H.H

MUTED GTR

ACOU BASS

A.PIANO 1

A.PIANO 2

63

SNARE DRUM

BASS DRUM

CRASH CYMB

CLOSED H.H

MUTED GTR

ACOU BASS

A.PIANO 1

A.PIANO 2



66

SNARE DRUM

BASS DRUM

CLOSED H.H

MUTED GTR

ACOU BASS

A.PIANO 1

A.PIANO 2

68

SNARE DRUM

BASS DRUM

CLOSED H.H.

MUTED GTR

ACOU BASS

ACOU BASS

A.PIANO 2



71

SNARE DRUM

BASS DRUM

CRASH CYMB

CLOSED H.H.

MUTED GTR

ACOU BASS

A.PIANO 2

73

SNARE DRUM

BASS DRUM

CLOSED H.H

MUTED GTR

ACOU BASS

A.PIANO 2



75

SNARE DRUM

BASS DRUM

CLOSED H.H

MUTED GTR

ACOU BASS

A.PIANO 2

77

SNARE DRUM

BASS DRUM

CLOSED H.H

MUTED GTR

ACOU BASS

A.PIANO 2



79

SNARE DRUM

BASS DRUM

CLOSED H.H

MUTED GTR

ACOU BASS

A.PIANO 2

81

SNARE DRUM

BASS DRUM

CLOSED H.H

MUTED GTR

ACOU BASS

A.PIANO 2



83

SNARE DRUM

BASS DRUM

CRASH CYMB

CLOSED H.H

MUTED GTR

ACOU BASS

A.PIANO 2

86

SNARE DRUM

BASS DRUM

CLOSED H.H.

MUTED GTR

ACOU BASS

A.PIANO 2



88

SNARE DRUM

BASS DRUM

CLOSED H.H.

MUTED GTR

ACOU BASS

A.PIANO 1

A.PIANO 2

90

SNARE DRUM

BASS DRUM

CLOSED H.H

MUTED GTR

ACOU BASS

ACOU BASS

A.PIANO 2



93

SNARE DRUM

BASS DRUM

CRASH CYMB

CLOSED H.H

MUTED GTR

ACOU BASS

A.PIANO 2

96

SNARE DRUM

BASS DRUM

CLOSED H.H.

MUTED GTR

ACOU BASS

A.PIANO 2

6 6



98

SNARE DRUM

BASS DRUM

CLOSED H.H.

MUTED GTR

ACOU BASS

A.PIANO 2

6 6 6 6

100

SNARE DRUM

BASS DRUM

CLOSED H.H

MUTED GTR

ACOU BASS

A.PIANO 2



101

SNARE DRUM

BASS DRUM

CLOSED H.H

MUTED GTR

ACOU BASS

A.PIANO 2

102

SNARE DRUM

BASS DRUM

CLOSED H.H.

MUTED GTR

ACOU BASS

A.PIANO 1

A.PIANO 2



103

SNARE DRUM

BASS DRUM

CLOSED H.H.

MUTED GTR

ACOU BASS

A.PIANO 1

A.PIANO 2

105

SNARE DRUM

BASS DRUM

CRASH CYMB

CLOSED H.H.

MUTED GTR

ACOU BASS

A.PIANO 1

A.PIANO 2

The image shows a musical score for measures 105 and 106. The drum set parts are: SNARE DRUM (measures 105-106), BASS DRUM (measures 105-106), CRASH CYMB (measures 105-106), and CLOSED H.H. (measures 105-106). The piano accompaniment parts are: MUTED GTR (measures 105-106), ACOU BASS (measures 105-106), A.PIANO 1 (measures 105-106), and A.PIANO 2 (measures 105-106). The score is written in a standard musical notation style with a key signature of one sharp (F#) and a common time signature (C).

SNARE DRUM

Beatles - Rock `n Roll Music 1

♩ = 165,002884

4

10

16

23

30

36

43

50

56

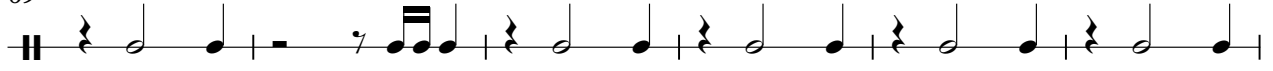
Detailed description: The image displays a snare drum part for the song 'Rock 'n Roll Music' by The Beatles. It is written in 4/4 time with a tempo of 165,002884. The notation consists of ten staves, each representing a measure. The first staff begins with a double bar line, a 4/4 time signature, and a four-measure rest indicated by a thick black line with the number '4' above it. From the second staff onwards, the pattern is a repeating sequence of quarter notes, each with a snare stroke (a vertical line with a flag) positioned above the note head. The notes are placed on the second line of the staff. Measures 16 and 23 contain a single measure rest, represented by a horizontal line with a vertical tick mark at the beginning. The pattern resumes in the following measure of each of these lines.

SNARE DRUM

63



69



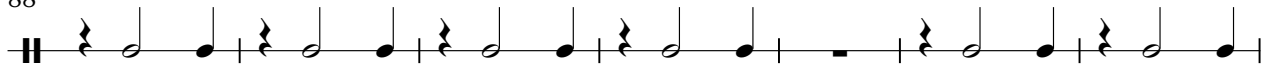
75



81



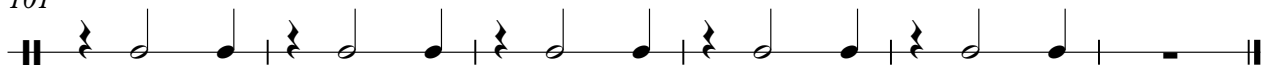
88



95



101

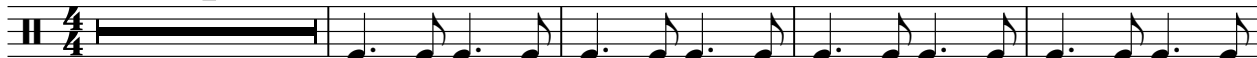


BASS DRUM

Beatles - Rock `n Roll Music 1

♩ = 165,002884

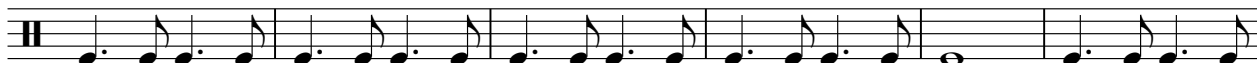
4



9



14



20



25



31



36



42



47



53



V.S.

BASS DRUM

58



64



69



74



79



85



90



96



101



104



CRASH CYMB

Beatles - Rock `n Roll Music 1

♩ = 165,002884

4 13 7

28 13 7 13

64 7 13

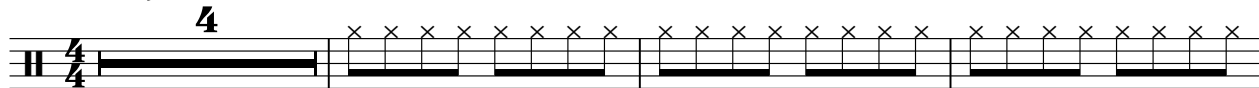
86 7 12

CLOSED H.H

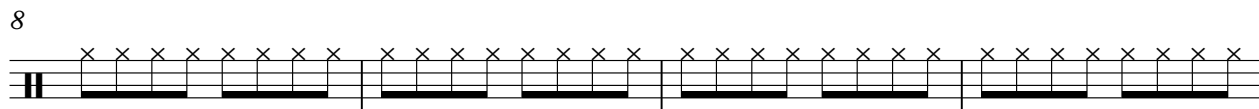
Beatles - Rock `n Roll Music 1

♩ = 165,002884

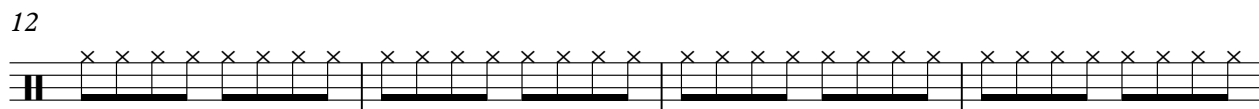
4



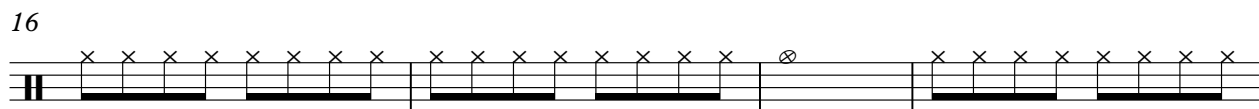
8



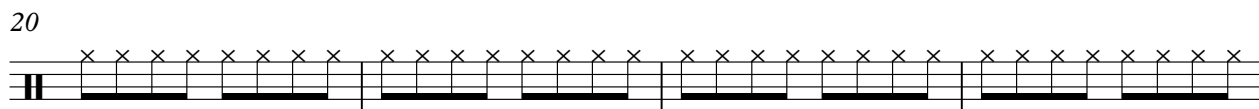
12



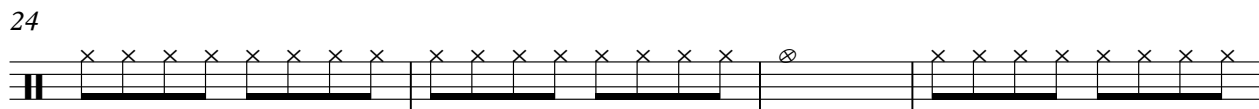
16



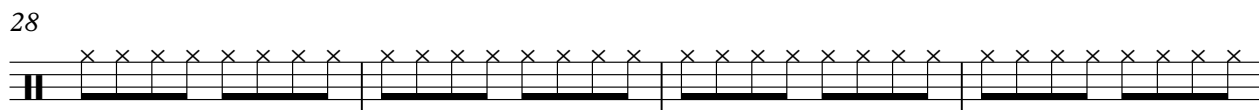
20



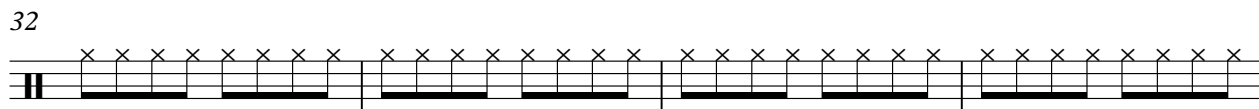
24



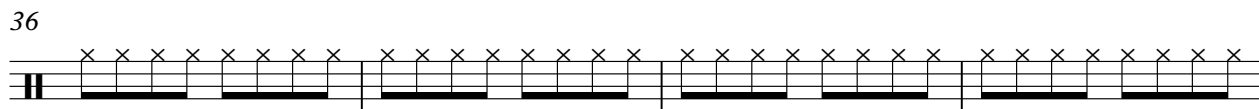
28



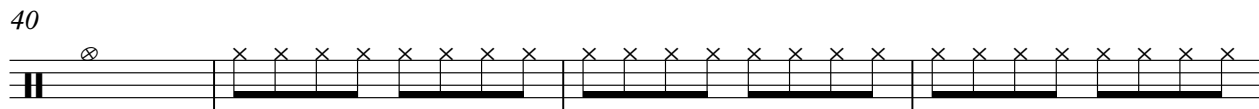
32



36



40



V.S.

2

CLOSED H.H

44



48



52



56



60



64



68



72



76



80



84



88



92



96



100



103



Beatles - Rock `n Roll Music 1

MUTED GTR

♩ = 165,002884

2

7

11

15

18

22

26

30

34

38

V.S.

41



45



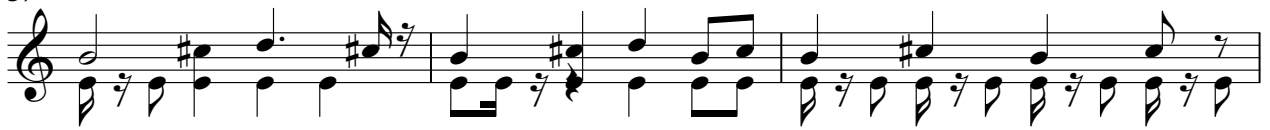
49



53



57



60



63



67



71



75



79



82



85



89



93



97



101



104



ACOU BASS

Beatles - Rock `n Roll Music 1

♩ = 165,002884

4

9

14

19

24

29

34

39

44

49

V.S.

104



ACOU BASS

Beatles - Rock `n Roll Music 1

♩ = 165,002884

47 **21**

This system of musical notation is for the bass part of 'Rock 'n Roll Music'. It begins with a treble clef and a 4/4 time signature. The first measure is a whole rest, with the number '47' above it. The second measure contains a whole rest, a bar line, and a triplet of eighth notes (G4, F4, E4) with a '7' below them. The third measure is another whole rest, with the number '21' above it. The system ends with a double bar line.

70

21 **14**

This system of musical notation continues the bass part. It starts with a treble clef and a 4/4 time signature. The first measure is a whole rest, with the number '70' above it. The second measure is a whole rest, with the number '21' above it. The third measure contains a whole rest, a bar line, and a triplet of eighth notes (G4, F4, E4) with a '7' below them. The fourth measure is another whole rest, with the number '14' above it. The system ends with a double bar line.

Beatles - Rock `n Roll Music 1

A.PIANO 1

♩ = 165,002884

21 17

6

40 2

3 6

45 17 2

3

66 21

6 6

89 13

6

104

Beatles - Rock `n Roll Music 1

A.PIANO 2

♩ = 165,002884

4

7

9

11

14

17

21

25

28

30

V.S.

32

34

37

40

45

49

51

53

55

58

61

65

69

72

74

76

78

81

84

89

A.PIANO 2

93

96

99

101

103

105