

U2 - Sunday Bloody Sunday 3

♩ = 104,000557

DRUMS

STEEL GTR

CLEAN GTR

OVERDRIVE

FINGERDBAS

MELODY

POLYSYNTH

POLYSYNTH

VIOLIN



DRUMS

4

6

DRUMS

VIOLIN

Violin part for measures 6-7: Measure 6 has a whole rest. Measure 7 has a half note G2 (one ledger line below the staff) and a half note G3 (first line). A slur covers both notes.



8

DRUMS

OVERDRIVE

T	3	2	2	2	2	2	2	2	4	2	2	2	4	2
A														
B														

MELODY

VIOLIN

Violin part for measures 8-9: Measure 8 has a whole rest. Measure 9 has a half note G2 (one ledger line below the staff) and a half note G3 (first line). A slur covers both notes.



10

DRUMS

OVERDRIVE

T	2	2	2	2	2	2	2	2	4	2	2	2	4	2
A	3	3	3	1	1	1	1	1	1	1	1	1	1	1
B														

MELODY

VIOLIN

Violin part for measures 10-11: Measure 10 has a whole rest. Measure 11 has a half note G2 (one ledger line below the staff) and a half note G3 (first line). A slur covers both notes.

12

DRUMS

OVERDRIVE

MELODY

VIOLIN



13

DRUMS

OVERDRIVE

MELODY

VIOLIN

15

DRUMS

STEEL GTR

OVERDRIVE

FINGERDBAS

MELODY

VIOLIN

T	2	2	4	2	2	2	4	2
A	4	4		4	4	4		4
B								



17

DRUMS

STEEL GTR

FINGERDBAS

MELODY

VIOLIN

18

DRUMS

STEEL GTR

FINGERDBAS

MELODY



20

DRUMS

STEEL GTR

FINGERDBAS

MELODY

POLYSYNTH

21

DRUMS

OVERDRIVE

FINGERDBAS

MELODY

POLYSYNTH

String	1	2	3	4	5	6	7	8	9
T						2	1	1	2
A	3	3	3	3	3				
B	1	1	1	1	3			4	4

String	1	2	3	4	5	6	7	8	9
T	2	2	2	2	2	2			
A	4	4	4	4	4	4	4	4	1
B	4	4							



22

DRUMS

OVERDRIVE

FINGERDBAS

MELODY

POLYSYNTH

String	1	2	3	4	5	6	7	8	9
T						2	1	1	2
A	3	3	3	3	3				
B	1	1	1	1	3			4	4

String	1	2	3	4	5	6	7	8	9
T	2	2	2	2	2	2			
A	4	4	4	4	4	4	4	4	1
B	4	4							

23

DRUMS

OVERDRIVE

FINGERDBAS

MELODY

POLYSYNTH

2 2 2 2 2 2 2

3 3 3 3 3 2 2 1 1

3 3 3 3 3 4 6 6 1

1 1 1 1 3 4 4 4



24

DRUMS

OVERDRIVE

FINGERDBAS

POLYSYNTH

2 2 2 2 2 2 2

4 4 4

25

DRUMS

OVERDRIVE

FINGERDBAS

MELODY

POLYSYNTH



26

DRUMS

OVERDRIVE

FINGERDBAS

MELODY

POLYSYNTH

27

DRUMS

OVERDRIVE

FINGERDBAS

MELODY

The musical score for measures 27-31 consists of four staves. The DRUMS staff shows a pattern of eighth and sixteenth notes with 'x' marks above some notes. The OVERDRIVE staff has three lines: TAB with fret numbers (3, 2, 3, 2, 3, 2, 1, 2, 1, 2, 1), and lines A and B. The FINGERDBAS staff is in bass clef with a key signature of one flat, showing a sequence of notes and rests. The MELODY staff is in treble clef with a key signature of one flat, showing a sequence of notes.



28

DRUMS

OVERDRIVE

FINGERDBAS

MELODY

The musical score for measures 28-31 consists of four staves. The DRUMS staff shows a pattern of eighth and sixteenth notes with 'x' marks above some notes. The OVERDRIVE staff has three lines: TAB with fret numbers (2, 2, 4, 4, 4, 4, 4, 4, 4, 4, 4, 4), and lines A and B. The FINGERDBAS staff is in bass clef with a key signature of one sharp, showing a sequence of notes and rests. The MELODY staff is in treble clef with a key signature of one sharp, showing a sequence of notes.

29

DRUMS

OVERDRIVE

FINGERDBAS

MELODY

4 4 2 2 2 1 2 1 2
6 3 3 3 3 1 1 1 1 1
8



30

DRUMS

OVERDRIVE

FINGERDBAS

MELODY

2 2 4 4 4 4 4 4
4 6 4 6 6 6 6 4
4

31

DRUMS

OVERDRIVE

FINGERDBAS

MELODY

4 4 2 2 2 1 2 1 2

6 3 3 3 3 1 1 1 1 1

8



32

DRUMS

OVERDRIVE

FINGERDBAS

MELODY

2 2 4 4 4 4 4 4

4 6 4 6 6 6 6 4

33

DRUMS

OVERDRIVE

FINGERDBAS

MELODY

POLYSYNTH



34

DRUMS

OVERDRIVE

FINGERDBAS

MELODY

POLYSYNTH

35

DRUMS

OVERDRIVE

FINGERDBAS

MELODY

POLYSYNTH

The score for measures 35-40 features a complex drum pattern with various accents and rests. The Overdrive part includes guitar tabs with fret numbers (4, 6, 8, 3, 2, 1) and string numbers (T, A, B). The Fingerdbas part is in bass clef with a key signature of one flat. The Melody and Polysynth parts are in treble clef, with the Polysynth part showing a sustained note in the final measure.



36

DRUMS

OVERDRIVE

FINGERDBAS

MELODY

POLYSYNTH

The score for measures 36-41 continues the drum pattern. The Overdrive guitar tabs show fret numbers (2, 4, 6) and string numbers (T, A, B). The Fingerdbas part continues with a similar bass line. The Melody and Polysynth parts show a sustained note in the final measure, mirroring the structure of the previous section.

37

DRUMS

CLEAN GTR

OVERDRIVE

FINGERDBAS

MELODY

POLYSYNTH

TAB 4 4 6 4

A

B



39

DRUMS

CLEAN GTR

FINGERDBAS

POLYSYNTH

40

DRUMS

CLEAN GTR

OVERDRIVE

FINGERDBAS

MELODY

POLYSYNTH



41

DRUMS

OVERDRIVE

FINGERDBAS

42

DRUMS

OVERDRIVE

FINGERDBAS

VIOLIN



43

DRUMS

OVERDRIVE

FINGERDBAS

VIOLIN

44

DRUMS

OVERDRIVE

FINGERDBAS

VIOLIN



45

DRUMS

OVERDRIVE

FINGERDBAS

MELODY

VIOLIN

46

DRUMS

OVERDRIVE

FINGERDBAS

MELODY

VIOLIN



47

DRUMS

OVERDRIVE

FINGERDBAS

MELODY

VIOLIN

48

DRUMS

OVERDRIVE

FINGERDBAS

MELODY

VIOLIN



49

DRUMS

OVERDRIVE

FINGERDBAS

MELODY

VIOLIN

50

DRUMS

OVERDRIVE

FINGERDBAS

MELODY

VIOLIN



51

DRUMS

OVERDRIVE

FINGERDBAS

MELODY

VIOLIN

52

DRUMS

OVERDRIVE

FINGERDBAS

MELODY

VIOLIN



53

DRUMS

OVERDRIVE

FINGERDBAS

MELODY

POLYSYNTH

VIOLIN

54

DRUMS

OVERDRIVE

FINGERDBAS

MELODY

POLYSYNTH

VIOLIN



55

DRUMS

OVERDRIVE

FINGERDBAS

MELODY

POLYSYNTH

56

DRUMS

OVERDRIVE

FINGERDBAS

MELODY

POLYSYNTH

VIOLIN



57

DRUMS

OVERDRIVE

FINGERDBAS

MELODY

VIOLIN

58

DRUMS

OVERDRIVE

FINGERDBAS

MELODY

VIOLIN

Detailed description of the musical score for measures 58-61. The score is arranged in five systems. The first system contains the Drums staff with a drum set icon, the Overdrive staff with TAB notation (T, A, B lines), and the Fingerdbas staff. The second system contains the Melody and Violin staves. The third system contains the Drums staff, the Overdrive staff with TAB notation, and the Fingerdbas staff. The fourth system contains the Melody and Violin staves. The fifth system contains the Drums staff, the Overdrive staff with TAB notation, and the Fingerdbas staff. The TAB notation includes fret numbers and a question mark. The Fingerdbas staff shows a bass line with a question mark. The Melody and Violin staves show a melodic line with a sharp sign.



59

DRUMS

OVERDRIVE

FINGERDBAS

MELODY

VIOLIN

Detailed description of the musical score for measures 59-62. The score is arranged in five systems. The first system contains the Drums staff with a drum set icon, the Overdrive staff with TAB notation (T, A, B lines), and the Fingerdbas staff. The second system contains the Melody and Violin staves. The third system contains the Drums staff, the Overdrive staff with TAB notation, and the Fingerdbas staff. The fourth system contains the Melody and Violin staves. The fifth system contains the Drums staff, the Overdrive staff with TAB notation, and the Fingerdbas staff. The TAB notation includes fret numbers. The Fingerdbas staff shows a bass line with a sharp sign and a long note. The Melody and Violin staves show a melodic line with a sharp sign.

61

DRUMS

OVERDRIVE

T						2		2	2
A	3	3	3	3	3	1	1		
B	1	1	1	3		4		4	

FINGERDBAS

MELODY

POLYSYNTH

VIOLIN

63

DRUMS

OVERDRIVE

T	2	2	2	2	2
A	4	4	4	4	4
B	4	4	4	4	1

FINGERDBAS

MELODY

POLYSYNTH

VIOLIN

64

DRUMS

OVERDRIVE

T	3	3	3	3		2	2		
A	3	3	3	3	3	1	6	6	1
B	1		1	1		4	4	4	

FINGERDBAS

MELODY

POLYSYNTH

VIOLIN

65

DRUMS

OVERDRIVE

T	2	2	2	2	2	2	2
A	4	4	4	4	4	4	4
B							

FINGERDBAS

MELODY

POLYSYNTH

VIOLIN

66

DRUMS

OVERDRIVE

T	3	3	3	3	3	2	1	2	2
A	3	3	3	3	3	1	1		
B	1		1	1	3	4		4	

FINGERDBAS

MELODY

POLYSYNTH

VIOLIN

67

DRUMS

OVERDRIVE

T	2	2	2	2	2
A	4	4	4	4	4
B	4	4		4	1

FINGERDBAS

MELODY

POLYSYNTH

VIOLIN

68

DRUMS

OVERDRIVE

FINGERDBAS

MELODY

POLYSYNTH

VIOLIN

69

DRUMS

OVERDRIVE

FINGERDBAS

MELODY

POLYSYNTH

70

DRUMS

OVERDRIVE

FINGERDBAS

MELODY



71

DRUMS

OVERDRIVE

FINGERDBAS



72

DRUMS

OVERDRIVE

FINGERDBAS

73

DRUMS

OVERDRIVE

FINGERDBAS

3 3 3 3 3 3 3 4 4



74

DRUMS

OVERDRIVE

FINGERDBAS

4 4 1 4 4 4 2 2 4 2 2 1 4 2 4 3 3



76

DRUMS

OVERDRIVE

FINGERDBAS

4 2 4 2 4 4 4 4 2

77

DRUMS

OVERDRIVE

T
A
B

FINGERDBAS



78

DRUMS

OVERDRIVE

T
A
B

FINGERDBAS



79

DRUMS

OVERDRIVE

T
A
B

FINGERDBAS

MELODY

80

DRUMS

OVERDRIVE

FINGERDBAS

MELODY



81

DRUMS

OVERDRIVE

FINGERDBAS

MELODY

82

DRUMS

OVERDRIVE

FINGERDBAS

MELODY

String	1	2	3	4	5	6
T	3	3	3	3	2	2
A	3	3	3	3	1	1
B	1	1	1	1	4	4



83

DRUMS

OVERDRIVE

FINGERDBAS

MELODY

String	1	2	3	4	5	6
T	2	2	2	2	2	2
A	4	4	4	4	4	4
B						

84

DRUMS

OVERDRIVE

FINGERDBAS

MELODY



85

DRUMS

OVERDRIVE

FINGERDBAS

MELODY

86

DRUMS

OVERDRIVE

FINGERDBAS

MELODY

POLYSYNTH

86

DRUMS

OVERDRIVE

FINGERDBAS

MELODY

POLYSYNTH

86

DRUMS

OVERDRIVE

FINGERDBAS

MELODY

POLYSYNTH



87

DRUMS

OVERDRIVE

FINGERDBAS

MELODY

POLYSYNTH

87

DRUMS

OVERDRIVE

FINGERDBAS

MELODY

POLYSYNTH

87

DRUMS

OVERDRIVE

FINGERDBAS

MELODY

POLYSYNTH

88

DRUMS

OVERDRIVE

FINGERDBAS

MELODY

POLYSYNTH



89

DRUMS

OVERDRIVE

FINGERDBAS

MELODY

POLYSYNTH

90

DRUMS

CLEAN GTR

FINGERDBAS

MELODY

POLYSYNTH



92

DRUMS

CLEAN GTR

FINGERDBAS

MELODY

POLYSYNTH

VIOLIN

94

DRUMS

CLEAN GTR

FINGERDBAS

MELODY

VIOLIN



95

DRUMS

CLEAN GTR

FINGERDBAS

MELODY

POLYSYNTH

VIOLIN

96

DRUMS

CLEAN GTR

FINGERDBAS

POLYSYNTH



97

DRUMS

CLEAN GTR

OVERDRIVE

T
A
B

FINGERDBAS

MELODY

98

DRUMS

OVERDRIVE

FINGERDBAS

VIOLIN



99

DRUMS

OVERDRIVE

FINGERDBAS

VIOLIN

100

DRUMS

OVERDRIVE

FINGERDBAS

VIOLIN



101

DRUMS

OVERDRIVE

FINGERDBAS

VIOLIN

102

DRUMS

OVERDRIVE

T	3	3	3	3		2	1	1	2	2
A	3	3	3	3	3					
B	1	1	1	1	3		4	1	4	

FINGERDBAS

MELODY

VIOLIN



103

DRUMS

OVERDRIVE

T	2	2	2	2	2	2				
A	4	4	4	4	4	4	4	4	4	1
B	4	4	4	4	4	4	4	4	4	

FINGERDBAS

MELODY

VIOLIN

104

DRUMS

OVERDRIVE

FINGERDBAS

MELODY

VIOLIN



105

DRUMS

OVERDRIVE

FINGERDBAS

MELODY

VIOLIN

106

DRUMS

OVERDRIVE

FINGERDBAS

MELODY

POLYSYNTH

VIOLIN



107

DRUMS

OVERDRIVE

FINGERDBAS

MELODY

POLYSYNTH

108

DRUMS

OVERDRIVE

FINGERDBAS

MELODY

POLYSYNTH



109

DRUMS

OVERDRIVE

FINGERDBAS

MELODY

POLYSYNTH

VIOLIN

110

DRUMS

OVERDRIVE

T	3	3	3	3		2		2	2
A	3	3	3	3	3	1	1		
B	1		1	1		4		4	

FINGERDBAS

MELODY

POLYSYNTH

VIOLIN

111

DRUMS

OVERDRIVE

T	2	2	2	2	2
A	4	4	4	4	4
B	4	4	4	4	1

FINGERDBAS

MELODY

POLYSYNTH

VIOLIN

112

DRUMS

OVERDRIVE

T	3	3	3	3		2	2		
A	3	3	3	3	3	1	6	6	1
B	1		1	1		4	4	4	

FINGERDBAS

MELODY

POLYSYNTH

VIOLIN

113

DRUMS

OVERDRIVE

FINGERDBAS

MELODY

POLYSYNTH

VIOLIN



114

DRUMS

OVERDRIVE

FINGERDBAS

MELODY

VIOLIN

115

DRUMS

OVERDRIVE

FINGERDBAS

MELODY

VIOLIN



116

DRUMS

OVERDRIVE

FINGERDBAS

MELODY

VIOLIN

117

DRUMS

OVERDRIVE

FINGERDBAS

MELODY

VIOLIN



118

DRUMS

OVERDRIVE

FINGERDBAS

VIOLIN

DRUMS

U2 - Sunday Bloody Sunday 3

♩ = 104,000557

5

7

9

11

13

15

17

19

21

V.S.

DRUMS

23

25

27

29

31

33

35

37

39

41

DRUMS

43

45

47

49

51

53

55

57

59

61

V.S.

DRUMS

63

65

67

69

71

73

75

77

79

81

DRUMS

83

Musical notation for drum set at measure 83. The top staff shows a snare drum pattern with eighth notes and rests. The bottom staff shows a bass drum pattern with eighth notes and rests. A slur covers the first two measures of the snare part.

85

Musical notation for drum set at measure 85. The top staff shows a snare drum pattern with eighth notes and rests. The bottom staff shows a bass drum pattern with eighth notes and rests. A slur covers the first two measures of the snare part.

87

Musical notation for drum set at measure 87. The top staff shows a snare drum pattern with eighth notes and rests. The bottom staff shows a bass drum pattern with eighth notes and rests. A slur covers the first two measures of the snare part.

89

Musical notation for drum set at measure 89. The top staff shows a snare drum pattern with eighth notes and rests. The bottom staff shows a bass drum pattern with eighth notes and rests. A slur covers the first two measures of the snare part.

91

Musical notation for drum set at measure 91. The top staff shows a snare drum pattern with eighth notes and rests. The bottom staff shows a bass drum pattern with eighth notes and rests. A slur covers the first two measures of the snare part.

93

Musical notation for drum set at measure 93. The top staff shows a snare drum pattern with eighth notes and rests. The bottom staff shows a bass drum pattern with eighth notes and rests. A slur covers the first two measures of the snare part.

95

Musical notation for drum set at measure 95. The top staff shows a snare drum pattern with eighth notes and rests. The bottom staff shows a bass drum pattern with eighth notes and rests. A slur covers the first two measures of the snare part.

97

Musical notation for drum set at measure 97. The top staff shows a snare drum pattern with eighth notes and rests. The bottom staff shows a bass drum pattern with eighth notes and rests. A slur covers the first two measures of the snare part.

99

Musical notation for drum set at measure 99. The top staff shows a snare drum pattern with eighth notes and rests. The bottom staff shows a bass drum pattern with eighth notes and rests. A slur covers the first two measures of the snare part.

101

Musical notation for drum set at measure 101. The top staff shows a snare drum pattern with eighth notes and rests. The bottom staff shows a bass drum pattern with eighth notes and rests. A slur covers the first two measures of the snare part.

V.S.

DRUMS

103

105

107

109

111

113

115

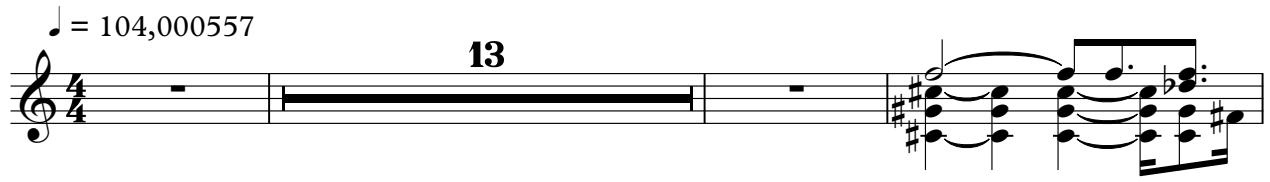
117

STEEL GTR

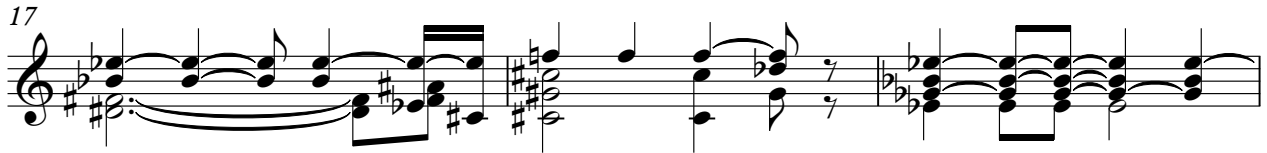
U2 - Sunday Bloody Sunday 3

♩ = 104,000557

13



17



20

100



CLEAN GTR

U2 - Sunday Bloody Sunday 3

♩ = 104,000557

35

39

49

91

95

23

U2 - Sunday Bloody Sunday 3

OVERDRIVE

♩ = 104,000557

6

E																				
T										3	2	2	2	2	2	2	2	2	2	2
A											3	3	3	1	1	1	1	1	1	1
B																				

10

T	2	2	2	2	2	2	2	2	2	2	2	2	2	2	2	2	2	2	2	2
A	3	3	3	3	1	1	1	1	1	1	1	1	1	1	1	1	1	1	1	1
B																				

14

5

T	2	2	2	2	2	2	2	2	2	2	2	2	2	2	2	2	2	2	2	2
A	3	3	3	3	1	1	1	1	1	1	1	1	1	1	1	1	1	1	1	1
B																				

22

T	2	2	2	2	2	2	2	2	2	2	2	2	2	2	2	2	2	2	2	2
A	4	4	4	4	4	4	4	4	4	4	4	4	4	4	4	4	4	4	4	4
B	4	4	4	4	4	4	4	4	4	4	4	4	4	4	4	4	4	4	4	4

25

T	3	3	3	3	3	3	3	3	3	3	3	3	3	3	3	3	3	3	3	3
A	3	3	3	3	3	3	3	3	3	3	3	3	3	3	3	3	3	3	3	3
B	1	1	1	1	1	1	1	1	1	1	1	1	1	1	1	1	1	1	1	1

28

T	2	2	4	4	4	4	4	4	4	4	4	4	4	4	4	4	4	4	4	4
A	4	4	6	6	6	6	6	6	6	6	6	6	6	6	6	6	6	6	6	6
B	4	4	4	4	4	4	4	4	4	4	4	4	4	4	4	4	4	4	4	4

31

T	4	4	2	2	2	2	2	2	2	2	2	2	2	2	2	2	2	2	2	2
A	6	6	3	3	3	3	3	3	3	3	3	3	3	3	3	3	3	3	3	3
B	8	8	4	4	4	4	4	4	4	4	4	4	4	4	4	4	4	4	4	4

34

T	2	2	4	4	4	4	4	4	4	4	4	4	4	4	4	4	4	4	4	4
A	4	4	6	6	6	6	6	6	6	6	6	6	6	6	6	6	6	6	6	6
B	4	4	4	4	4	4	4	4	4	4	4	4	4	4	4	4	4	4	4	4

36

2

T	2	2	4	4	4	4	4	4	4	4	4	4	4	4	4	4	4	4	4	4
A	4	4	6	6	6	6	6	6	6	6	6	6	6	6	6	6	6	6	6	6
B	4	4	4	4	4	4	4	4	4	4	4	4	4	4	4	4	4	4	4	4

OVERDRIVE

T	3 3 3 3 3 3 3 3	3 3 3 3 3 3 3 3	2 2 2 2 2 2 2 2
A	3 3 3 3 3 3 3 3	3 3 3 3 3 3 3 3	4 4 4 4 4 4 4 4
B	1 1 1 1 1 1 1 1	1 1 1 1 1 1 1 1	4 4 4 4 4 4 4 4

43

T	3 3 3 3 3 3 3 3	2 2 2 2 2 2 2 2	3 3 3 3 3 3 3 3
A	3 3 3 3 3 3 3 3	4 4 4 4 4 4 4 4	3 3 3 3 3 3 3 3
B	1 1 1 1 1 1 1 1	4 4 4 4 4 4 4 4	1 1 1 1 1 1 1 1

46

T	2 2 2 2 2 2 2 2	3 3 3 3 3 3 3 3	2 2 4 4 4 4 4 4
A	4 4 4 4 4 4 4 4	4 4 4 4 4 4 4 4	6 6 6 6 6 6 6 6
B	4 4 4 4 4 4 4 4	1 1 1 1 1 1 1 1	4 4 4 4 4 4 4 4

49

T	4 4 2 2 2 2 2 2	2 2 4 4 4 4 4 4	4 4 2 2 2 2 2 2
A	6 3 3 3 3 3 3 3	4 6 6 6 6 6 6 6	6 3 3 3 3 3 3 3
B	8 1 1 1 1 1 1 1	4 4 4 4 4 4 4 4	8 1 1 1 1 1 1 1

52

T	2 2 4 4 4 4 4 4	4 4 2 2 2 2 2 2	2 2 4 4 4 4 4 4
A	4 6 6 6 6 6 6 6	6 3 3 3 3 3 3 3	4 6 6 6 6 6 6 6
B	4 4 4 4 4 4 4 4	8 1 1 1 1 1 1 1	4 4 4 4 4 4 4 4

55

T	4 4 2 2 2 2 2 2	2 2 4 4 4 4 4 4	2 2 2 2 2 2 2 2
A	6 3 3 3 3 3 3 3	4 6 6 6 6 6 6 6	6 3 3 3 3 3 3 3
B	8 1 1 1 1 1 1 1	4 4 4 4 4 4 4 4	4 4 4 4 4 4 4 4

58

T	4 4 4 4 4 4 4 4	2 2 6 6 4 4	3 3 3 3 3 3 3 3
A	4 3 3 3 3 3 3 3	6 6 6 6 6 6 6 6	3 3 3 3 3 3 3 3
B	6 6 6 6 6 6 6 6	11 4 4 4 4 4 4 4	1 1 1 1 1 1 1 1

63

T	2 2 2 2 2 2 2 2	3 3 3 3 3 3 3 3	2 2 2 2 2 2 2 2
A	4 4 4 4 4 4 4 4	3 3 3 3 3 3 3 3	4 4 4 4 4 4 4 4
B	4 4 4 4 4 4 4 4	1 1 1 1 1 1 1 1	4 4 4 4 4 4 4 4

66

T	3 3 3 3 3 3 3 3	2 2 2 2 2 2 2 2	3 3 3 3 3 3 3 3
A	3 3 3 3 3 3 3 3	4 4 4 4 4 4 4 4	3 3 3 3 3 3 3 3
B	1 1 1 1 1 1 1 1	4 4 4 4 4 4 4 4	1 1 1 1 1 1 1 1

69

T	2 2 2 2 2 2 2 2	11 9 9 9 11 11 11 9 9 9 6 6	6 4 4 6 6 6 4 4 5 11
A	4 4 4 4 4 4 4 4	3 3 3 3 3 3 3 3	3 3 3 3 3 3 3 3
B	4 4 4 4 4 4 4 4	3 3 3 3 3 3 3 3	3 3 3 3 3 3 3 3

OVERDRIVE

72

	11 9 9 11 11 11 9 9 8 6 6 6 4 4 6 6 6 4 4 4 4 4 2 2 1 1		
T	3 3 3 3 3 3 3 3 12 3 3 3 3 3 3 3 4 4 4 4 4 4 4 4		
A			
B			

75

	2 4 2 2 1 4 2 4 3 3 3 4 2 4 2 4 4 4 1 1 2 2 4 4 6 6 9 9 8 8 4 6 6		
T	3 3		
A			
B			

79

	6 2		
T	4 3		
A			
B	1 1		

82

	2 2		
T	3 3		
A			
B	1 1		

85

	2 2		
T	4 4		
A			
B	4 4		

88

	2 2		7
T	3 3		
A			
B	1 1		

97

	3 3		
T	3 3		
A			
B	1 1		

100

	2 2		
T	3 3		
A			
B	1 1		

103

	2 2		
T	4 4		
A			
B	4 4		

106

	2 2		
T	3 3		
A			
B	1 1		

V.S.

4 109

OVERDRIVE

T	2 2 2 2	2 2 2	2 2 2	2 2 2	3 3 3 3	1 1 2 2	2 2 2	2 2 2	2 2 2
A	4 4	4	4	4	3 3 3 3 3	4 4	4 4 4 4	4 4 4 4	4 4 4 4
B					1 1 1	4 4	4 4		1

112

T	3 3 3 3	2 2	1	2 2 2	2 2 2	2 2 2	3 3 3 3	2 2 2	2 2 2
A	3 3 3 3 3	6 6	1	4 4	4	4	3 3 3 3 3	1 1	2 2
B	1 1 1	4 4 4					1 1 1 3	4 4	

115

T	2 2	2	2 2	2 2	3 3 3 3	2 2		
A	4 4	4	4 4 4 4	4	3 3 3 3 3	1 6 6	1	
B	4 4			1	1 1 1 1 3	4 4 4		

117

T	2 2 2	2	2 2	2	3	2			
A	4 4		4		3	=====			
B					1	=====			

♩ = 104,000557

14



18



22



25



28



31



34



37



42



44



46



49



52



55



58



63



66



69



72



75



78



80



83



85



87



89



93



98



101



103



V.S.

105



107



109



111



113



115



117



U2 - Sunday Bloody Sunday 3

MELODY

♩ = 104,000557

7

12

16

20

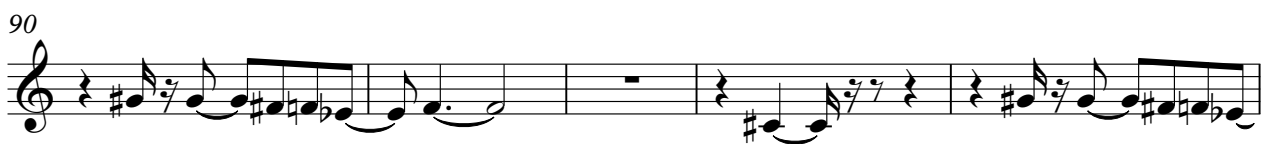
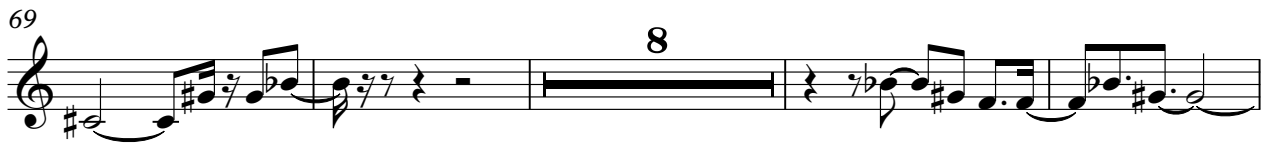
26

30

35

38

4



103



107



111



115



♩ = 104,000557

31

A musical staff in 4/4 time. The first measure is a whole rest. The second measure is a whole bar line. The third measure contains a quarter rest, followed by an eighth note G4 with a flat, an eighth note A4 with a sharp, and a quarter note B4. The fourth measure contains a quarter rest, followed by an eighth note G4 with a flat, and an eighth note A4 with a sharp.

36

16

A musical staff in 4/4 time. The first measure contains a quarter note G4 with a sharp, a quarter note A4 with a sharp, and a quarter note B4. The second measure is a whole bar line. The third measure contains a quarter rest, followed by an eighth note G4 with a flat, an eighth note A4 with a sharp, and a quarter note B4. The fourth measure contains a quarter note G4 with a sharp, a quarter note A4 with a sharp, and a quarter note B4.

55

64

A musical staff in 4/4 time. The first measure contains a quarter rest, followed by an eighth note G4 with a flat, an eighth note A4 with a sharp, and a quarter note B4. The second measure contains a quarter note G4 with a sharp, a quarter note A4 with a sharp, and a quarter note B4. The third measure is a whole bar line. The fourth measure is a whole bar line.

♩ = 104,000557

18

25

40

64

68

87

92

106

110

112

VIOLIN

56

61

66

69

99

103

109

114

117