

Vanessa - Strasse Der Liebe

♩ = 105,001572

MELODY

DRUMS

VIBRAPHONE

A. GUITAR

FINGERDBAS

SYNTH BASS

PIZZICATO

♩ = 105,001572

SYN STRING

A. PIANO

5

DRUMS

VIBRAPHONE

FINGERDBAS

SYNTH BASS

PIZZICATO

SYN STRING

A.PIANO

Detailed description: This block contains the musical notation for measures 5, 6, and 7. The score is arranged in a vertical stack of staves. At the top, a drum staff shows a complex rhythmic pattern with 'x' marks for cymbals and stems for other drums. Below it, the vibraphone staff has a melodic line in treble clef with a key signature of one sharp (F#). The finger bass staff is in bass clef with a simple bass line. The synth bass staff features a dense, repetitive eighth-note pattern. The pizzicato staff shows a series of chords in treble clef. The syn string staff has long, sustained notes in treble clef. The A. piano staff is in bass clef with a melodic line. A double bar line is present at the end of measure 7.



8

MELODY

DRUMS

VIBRAPHONE

A.GUITAR

FINGERDBAS

SYNTH BASS

PIZZICATO

SYN STRING

A.PIANO

Detailed description: This block contains the musical notation for measures 8, 9, and 10. The score is arranged in a vertical stack of staves. A new 'MELODY' staff is added at the top in treble clef. The drum staff continues with its rhythmic pattern. The vibraphone staff has a melodic line. The A. guitar staff is in treble clef with a melodic line. The finger bass staff continues with its bass line. The synth bass staff has its eighth-note pattern. The pizzicato staff shows chords. The syn string staff has sustained notes. The A. piano staff has its melodic line. A double bar line is present at the end of measure 10.

11

Musical score for MELODY, DRUMS, VIBRAPHONE, A. GUITAR, FINGERDBAS, SYNTH BASS, PIZZICATO, SYN STRING, and A. PIANO. The score is written for nine instruments and includes a measure number '11' at the top left. The MELODY part is in treble clef with a key signature of one sharp (F#). The DRUMS part uses a standard drum notation with 'x' marks for cymbals and vertical lines for other drums. The VIBRAPHONE part is in treble clef with a key signature of one sharp. The A. GUITAR part is in treble clef with a key signature of one sharp. The FINGERDBAS part is in bass clef. The SYNTH BASS part is in bass clef. The PIZZICATO part is in treble clef with a key signature of one sharp. The SYN STRING part is in treble clef with a key signature of one sharp. The A. PIANO part is in bass clef with a key signature of one sharp. The score consists of three measures of music.

14

MELODY

DRUMS

VIBRAPHONE

A. GUITAR

FINGERDBAS

SYNTH BASS

PIZZICATO

SYN STRING

A. PIANO

Detailed description: This is a multi-stem musical score for a jazz ensemble. The score is written for nine instruments: MELODY (treble clef), DRUMS (drum set notation), VIBRAPHONE (treble clef), A. GUITAR (treble clef), FINGERDBAS (bass clef), SYNTH BASS (bass clef), PIZZICATO (treble clef), SYN STRING (treble clef), and A. PIANO (bass clef). The music is in 4/4 time. The MELODY part features a rhythmic pattern of eighth and sixteenth notes. The DRUMS part shows a consistent groove with snare and bass drum patterns. The VIBRAPHONE part has a melodic line with some rests. The A. GUITAR part uses a mix of chords and melodic lines. The FINGERDBAS part provides a steady bass line. The SYNTH BASS part has a complex, rhythmic pattern. The PIZZICATO part consists of a dense, rhythmic chordal texture. The SYN STRING part features sustained chords. The A. PIANO part has a melodic line with some rests.

17

MELODY

DRUMS

VIBRAPHONE

A. GUITAR

FINGERDBAS

SYNTH BASS

PIZZICATO

SYN STRING

A. PIANO

Detailed description: This is a multi-stem musical score for a jazz ensemble. The score is written for nine instruments: MELODY, DRUMS, VIBRAPHONE, A. GUITAR, FINGERDBAS, SYNTH BASS, PIZZICATO, SYN STRING, and A. PIANO. The music is in 4/4 time and features a complex rhythmic pattern. The MELODY line starts with a rest followed by a series of eighth and quarter notes. The DRUMS part features a consistent pattern of eighth notes and rests. The VIBRAPHONE part plays a melodic line with eighth notes and rests. The A. GUITAR part features a melodic line with eighth notes and rests. The FINGERDBAS part plays a melodic line with eighth notes and rests. The SYNTH BASS part plays a rhythmic pattern of eighth notes. The PIZZICATO part features a complex rhythmic pattern of eighth notes. The SYN STRING part features a melodic line with eighth notes and rests. The A. PIANO part features a melodic line with eighth notes and rests.

MELODY

DRUMS

VIBRAPHONE

A. GUITAR

FINGERDBAS

SYNTH BASS

PIZZICATO

SYN STRING

A. PIANO

Detailed description: This is a multi-staff musical score for a jazz ensemble. The score is written for nine instruments: MELODY (treble clef), DRUMS (drum set notation), VIBRAPHONE (treble clef), A. GUITAR (treble clef), FINGERDBAS (bass clef), SYNTH BASS (bass clef), PIZZICATO (treble clef), SYN STRING (treble clef), and A. PIANO (bass clef). The music is in 4/4 time and features a complex harmonic structure with many accidentals. The MELODY part has a melodic line with eighth and sixteenth notes. The DRUMS part shows a steady rhythmic pattern. The VIBRAPHONE part has a melodic line with some rests. The A. GUITAR part features a melodic line with some rests. The FINGERDBAS part has a melodic line with some rests. The SYNTH BASS part has a rhythmic pattern with many notes. The PIZZICATO part has a rhythmic pattern with many notes. The SYN STRING part has a melodic line with some rests. The A. PIANO part has a melodic line with some rests.

23

MELODY

DRUMS

VIBRAPHONE

A.GUITAR

FINGERDBAS

SYNTH BASS

PIZZICATO

SYN STRING

A.PIANO



26

MELODY

DRUMS

A.GUITAR

FINGERDBAS

SYNTH BASS

PIZZICATO

SYN STRING

A.PIANO

28

MELODY

DRUMS

VIBRAPHONE

A.GUITAR

FINGERDBAS

SYNTH BASS

PIZZICATO

SYN STRING

A.PIANO



30

MELODY

DRUMS

A.GUITAR

FINGERDBAS

SYNTH BASS

PIZZICATO

SYN STRING

A.PIANO

32

MELODY
DRUMS
VIBRAPHONE
A.GUITAR
FINGERDBAS
SYNTH BASS
PIZZICATO
SYN STRING
A.PIANO

Detailed description: This system contains measures 32 and 33. The MELODY staff features a treble clef with a key signature of one sharp (F#) and a 4/4 time signature. It includes quarter notes, eighth notes, and sixteenth notes. The DRUMS staff uses a double bar line with 'x' marks for cymbals and vertical lines for other drums. The VIBRAPHONE staff has a treble clef and plays eighth-note patterns. The A.GUITAR staff has a treble clef and includes chords and single notes. The FINGERDBAS staff has a bass clef and plays a simple bass line. The SYNTH BASS staff has a bass clef and plays a rhythmic eighth-note pattern. The PIZZICATO staff has a treble clef and plays a complex, fast-moving pattern of chords. The SYN STRING staff has a treble clef and contains a long, sustained chord. The A.PIANO staff has a treble clef and plays a simple eighth-note melody.



34

MELODY
DRUMS
A.GUITAR
FINGERDBAS
SYNTH BASS
PIZZICATO
SYN STRING
A.PIANO

Detailed description: This system contains measures 34 and 35. The MELODY staff continues with a treble clef, one sharp key signature, and 4/4 time, featuring quarter and eighth notes. The DRUMS staff continues with its drum notation. The A.GUITAR staff continues with a treble clef, showing chords and melodic lines. The FINGERDBAS staff continues with a bass clef and a steady bass line. The SYNTH BASS staff continues with a bass clef and a consistent eighth-note pattern. The PIZZICATO staff continues with a treble clef and a complex, rhythmic chordal pattern. The SYN STRING staff continues with a treble clef and a long, sustained chord. The A.PIANO staff continues with a treble clef and a simple eighth-note melody.

36

MELODY
DRUMS
VIBRAPHONE
A.GUITAR
FINGERDBAS
SYNTH BASS
PIZZICATO
SYN STRING
A.PIANO

Detailed description: This block contains the musical score for measures 36 and 37. The score is arranged in a vertical stack of nine staves. The top staff is the MELODY line in treble clef with a key signature of one sharp (F#). The DRUMS staff uses a standard drum notation with 'x' marks for cymbals and vertical lines for other drums. The VIBRAPHONE staff is in treble clef with a key signature of one sharp. The A.GUITAR staff is in treble clef with a key signature of one sharp. The FINGERDBAS staff is in bass clef with a key signature of one sharp. The SYNTH BASS staff is in bass clef with a key signature of one sharp. The PIZZICATO staff is in treble clef with a key signature of one sharp, featuring a complex, rhythmic pattern of chords. The SYN STRING staff is in treble clef with a key signature of one sharp, showing sustained chords. The A.PIANO staff is in bass clef with a key signature of one sharp, featuring a melodic line with some grace notes.



38

MELODY
DRUMS
A.GUITAR
FINGERDBAS
SYNTH BASS
PIZZICATO
SYN STRING
A.PIANO

Detailed description: This block contains the musical score for measures 38 and 39. The score is arranged in a vertical stack of eight staves. The top staff is the MELODY line in treble clef with a key signature of one sharp. The DRUMS staff uses a standard drum notation. The A.GUITAR staff is in treble clef with a key signature of one sharp. The FINGERDBAS staff is in bass clef with a key signature of one sharp. The SYNTH BASS staff is in bass clef with a key signature of one sharp. The PIZZICATO staff is in treble clef with a key signature of one sharp, featuring a complex, rhythmic pattern of chords. The SYN STRING staff is in treble clef with a key signature of one sharp, showing sustained chords. The A.PIANO staff is in bass clef with a key signature of one sharp, featuring a melodic line with some grace notes.

40

MELODY

DRUMS

VIBRAPHONE

A.GUITAR

FINGERDBAS

SYNTH BASS

PIZZICATO

SYN STRING

A.PIANO



42

DRUMS

VIBRAPHONE

A.GUITAR

FINGERDBAS

SYNTH BASS

PIZZICATO

SYN STRING

A.PIANO

44

Musical score for MELODY, DRUMS, VIBRAPHONE, A. GUITAR, FINGERDBAS, SYNTH BASS, PIZZICATO, SYN STRING, and A. PIANO. The score is written for nine instruments and includes a measure number 44 at the top.

- MELODY:** Treble clef, mostly rests with a short melodic phrase in the third measure.
- DRUMS:** Drum notation with 'x' marks for cymbals and stems for other drums.
- VIBRAPHONE:** Treble clef, playing a rhythmic pattern of eighth notes.
- A. GUITAR:** Treble clef, playing a complex melodic line with many accidentals.
- FINGERDBAS:** Bass clef, playing a simple bass line with quarter notes.
- SYNTH BASS:** Bass clef, playing a fast, repetitive eighth-note pattern.
- PIZZICATO:** Treble clef, playing a complex, fast-moving chordal texture.
- SYN STRING:** Treble clef, playing sustained chords with long notes.
- A. PIANO:** Bass clef, playing a simple bass line with quarter notes.

47

MELODY

DRUMS

VIBRAPHONE

A. GUITAR

FINGERDBAS

SYNTH BASS

PIZZICATO

SYN STRING

A. PIANO

50

MELODY

DRUMS

VIBRAPHONE

A. GUITAR

FINGERDBAS

SYNTH BASS

PIZZICATO

SYN STRING

A. PIANO

53

MELODY

DRUMS

VIBRAPHONE

A. GUITAR

FINGERDBAS

SYNTH BASS

PIZZICATO

SYN STRING

A. PIANO

56

Musical score for MELODY, DRUMS, VIBRAPHONE, A. GUITAR, FINGERDBAS, SYNTH BASS, PIZZICATO, SYN STRING, and A. PIANO. The score is written for nine instruments. MELODY is in treble clef with a key signature of one sharp (F#). DRUMS is in a standard drum set notation. VIBRAPHONE is in treble clef with a key signature of one sharp. A. GUITAR is in treble clef with a key signature of one sharp. FINGERDBAS is in bass clef with a key signature of one sharp. SYNTH BASS is in bass clef with a key signature of one sharp. PIZZICATO is in treble clef with a key signature of one sharp. SYN STRING is in treble clef with a key signature of one sharp. A. PIANO is in bass clef with a key signature of one sharp. The score consists of three measures of music.

59

MELODY

DRUMS

VIBRAPHONE

A.GUITAR

FINGERDBAS

SYNTH BASS

PIZZICATO

SYN STRING

A.PIANO



62

MELODY

DRUMS

A.GUITAR

FINGERDBAS

SYNTH BASS

PIZZICATO

SYN STRING

A.PIANO

64

MELODY
DRUMS
VIBRAPHONE
A.GUITAR
FINGERDBAS
SYNTH BASS
PIZZICATO
SYN STRING
A.PIANO

Detailed description: This system of music covers measures 64 and 65. The MELODY part starts with a quarter rest in measure 64, followed by eighth notes in measure 65. DRUMS and VIBRAPHONE play a consistent rhythmic pattern. A.GUITAR features a melodic line with some slurs. FINGERDBAS and SYNTH BASS provide a steady bass line. PIZZICATO consists of a series of chords with a rhythmic pattern. SYN STRING is a sustained chord. A.PIANO plays a simple eighth-note melody.



66

MELODY
DRUMS
A.GUITAR
FINGERDBAS
SYNTH BASS
PIZZICATO
SYN STRING
A.PIANO

Detailed description: This system of music covers measures 66 and 67. The MELODY part has a quarter note in measure 66 and a quarter rest in measure 67. DRUMS and VIBRAPHONE continue their rhythmic pattern. A.GUITAR has a melodic line with slurs. FINGERDBAS and SYNTH BASS continue their bass lines. PIZZICATO continues with its chordal pattern. SYN STRING is a sustained chord. A.PIANO continues its eighth-note melody.

68

MELODY

DRUMS

VIBRAPHONE

A.GUITAR

FINGERDBAS

SYNTH BASS

PIZZICATO

SYN STRING

A.PIANO



70

MELODY

DRUMS

A.GUITAR

FINGERDBAS

SYNTH BASS

PIZZICATO

SYN STRING

A.PIANO

72

MELODY

DRUMS

VIBRAPHONE

A. GUITAR

FINGERBAS

SYNTH BASS

PIZZICATO

SYN STRING

A. PIANO

74

MELODY
DRUMS
A.GUITAR
FINGERDBAS
SYNTH BASS
PIZZICATO
SYN STRING
A.PIANO

This musical score block covers measures 74 and 75. It features eight staves: MELODY (treble clef), DRUMS (drum set notation), A.GUITAR (treble clef), FINGERDBAS (bass clef), SYNTH BASS (bass clef), PIZZICATO (treble clef), SYN STRING (treble clef), and A.PIANO (bass clef). The MELODY staff shows a melodic line with a half note and a quarter note. The DRUMS staff has a steady quarter-note pattern. The A.GUITAR staff plays a series of chords. The FINGERDBAS staff has a simple bass line. The SYNTH BASS staff has a rhythmic pattern of eighth notes. The PIZZICATO staff has a complex chordal texture. The SYN STRING staff has a sustained chord. The A.PIANO staff has a melodic line with a half note and a quarter note.



76

MELODY
DRUMS
VIBRAPHONE
A.GUITAR
FINGERDBAS
SYNTH BASS
PIZZICATO
SYN STRING
A.PIANO

This musical score block covers measures 76 and 77. It features nine staves: MELODY (treble clef), DRUMS (drum set notation), VIBRAPHONE (treble clef), A.GUITAR (treble clef), FINGERDBAS (bass clef), SYNTH BASS (bass clef), PIZZICATO (treble clef), SYN STRING (treble clef), and A.PIANO (bass clef). The MELODY staff has a melodic line with a half note and a quarter note. The DRUMS staff has a steady quarter-note pattern. The VIBRAPHONE staff has a melodic line with a half note and a quarter note. The A.GUITAR staff plays a series of chords. The FINGERDBAS staff has a simple bass line. The SYNTH BASS staff has a rhythmic pattern of eighth notes. The PIZZICATO staff has a complex chordal texture. The SYN STRING staff has a sustained chord. The A.PIANO staff has a melodic line with a half note and a quarter note.

78

DRUMS

VIBRAPHONE

A.GUITAR

FINGERDBAS

SYNTH BASS

PIZZICATO

SYN STRING

A.PIANO

Detailed description: This system contains measures 78 and 79. The DRUMS part features a consistent rhythmic pattern of eighth notes. The VIBRAPHONE plays a melodic line with eighth notes and rests. The A.GUITAR has a complex texture with long, sustained notes and some rhythmic patterns. The FINGERDBAS provides a steady bass line with eighth notes. The SYNTH BASS has a similar eighth-note pattern. The PIZZICATO part consists of a series of chords, some with grace notes. The SYN STRING part has a few sustained notes. The A.PIANO part has a simple melodic line with quarter notes and rests.



80

MELODY

DRUMS

VIBRAPHONE

A.GUITAR

FINGERDBAS

SYNTH BASS

PIZZICATO

SYN STRING

A.PIANO

Detailed description: This system contains measures 80 and 81. The MELODY part has a few notes, including a triplet. The DRUMS part continues with eighth notes. The VIBRAPHONE has a melodic line with eighth notes and rests. The A.GUITAR has sustained notes and some rhythmic patterns. The FINGERDBAS has a bass line with quarter notes and rests. The SYNTH BASS has a steady eighth-note pattern. The PIZZICATO part has a series of chords, some with grace notes. The SYN STRING part has a few sustained notes. The A.PIANO part has a simple melodic line with quarter notes and rests.

82

MELODY

DRUMS

A.GUITAR

FINGERDBAS

SYNTH BASS

PIZZICATO

SYN STRING

A.PIANO



84

MELODY

DRUMS

VIBRAPHONE

A.GUITAR

FINGERDBAS

SYNTH BASS

PIZZICATO

SYN STRING

A.PIANO

86

MELODY

DRUMS

A. GUITAR

FINGERDBAS

SYNTH BASS

PIZZICATO

SYN STRING

A. PIANO



88

MELODY

DRUMS

VIBRAPHONE

A. GUITAR

FINGERDBAS

SYNTH BASS

PIZZICATO

SYN STRING

A. PIANO

90

Musical score for MELODY, DRUMS, A.GUITAR, FINGERDBAS, SYNTH BASS, PIZZICATO, SYN STRING, and A.PIANO. The score is written for 8 staves. MELODY is in treble clef with a key signature of one sharp (F#). DRUMS is in a standard drum notation. A.GUITAR is in treble clef. FINGERDBAS is in bass clef. SYNTH BASS is in bass clef. PIZZICATO is in treble clef. SYN STRING is in treble clef. A.PIANO is in bass clef. The score includes various musical notations such as notes, rests, and articulation marks.

92

MELODY

DRUMS

VIBRAPHONE

A. GUITAR

FINGERBAS

SYNTH BASS

PIZZICATO

SYN STRING

A. PIANO

Detailed description: This is a multi-staff musical score for a jazz ensemble. The score is written in 4/4 time and features a key signature of one sharp (F#). The instruments and their parts are: MELODY (treble clef), DRUMS (drum notation), VIBRAPHONE (treble clef), A. GUITAR (treble clef), FINGERBAS (bass clef), SYNTH BASS (bass clef), PIZZICATO (grand staff), SYN STRING (treble clef), and A. PIANO (bass clef). The score begins at measure 92. The MELODY part starts with a whole note chord (F#4, A4, C5) followed by a melodic line. The DRUMS part features a steady eighth-note pattern. The VIBRAPHONE part plays a simple melodic line. The A. GUITAR part provides harmonic support with chords and single notes. The FINGERBAS part has a walking bass line. The SYNTH BASS part plays a rhythmic eighth-note pattern. The PIZZICATO part consists of a series of chords. The SYN STRING part plays a sustained chord. The A. PIANO part has a simple melodic line.

94

MELODY
DRUMS
A.GUITAR
FINGERDBAS
SYNTH BASS
PIZZICATO
SYN STRING
A.PIANO

Detailed description: This block contains the musical notation for measures 94 and 95. The score is arranged in a grand staff with eight staves. The MELODY staff (treble clef) features a melodic line with a long note in measure 94. The DRUMS staff (percussion clef) shows a complex rhythmic pattern. The A.GUITAR staff (treble clef) has a melodic line with a long note in measure 94. The FINGERDBAS staff (bass clef) has a simple bass line. The SYNTH BASS staff (bass clef) has a rhythmic pattern. The PIZZICATO staff (treble clef) has a complex rhythmic pattern. The SYN STRING staff (treble clef) has a simple bass line. The A.PIANO staff (bass clef) has a simple bass line.



96

MELODY
DRUMS
VIBRAPHONE
A.GUITAR
FINGERDBAS
SYNTH BASS
PIZZICATO
SYN STRING
A.PIANO

Detailed description: This block contains the musical notation for measures 96 and 97. The score is arranged in a grand staff with nine staves. The MELODY staff (treble clef) has a long note in measure 96. The DRUMS staff (percussion clef) shows a complex rhythmic pattern. The VIBRAPHONE staff (treble clef) has a simple bass line. The A.GUITAR staff (treble clef) has a melodic line with a long note in measure 96. The FINGERDBAS staff (bass clef) has a simple bass line. The SYNTH BASS staff (bass clef) has a rhythmic pattern. The PIZZICATO staff (treble clef) has a complex rhythmic pattern. The SYN STRING staff (treble clef) has a simple bass line. The A.PIANO staff (bass clef) has a simple bass line.

98

DRUMS

VIBRAPHONE

A.GUITAR

FINGERDBAS

SYNTH BASS

PIZZICATO

SYN STRING

A.PIANO



100

DRUMS

VIBRAPHONE

A.GUITAR

FINGERDBAS

PIZZICATO

SYN STRING

A.PIANO

Vanessa - Strasse Der Liebe

MELODY

$\text{♩} = 105,001572$

7

12

15

19

23

27

31

35

38

5

46



50



54



58



62



66



71



76



83



87



MELODY

91



94



Vanessa - Strasse Der Liebe

DRUMS

♩ = 105,001572
2

7

11

15

19

23

27

31

35

39

V.S.

DRUMS

43

43

47

47

51

51

55

55

59

59

63

63

67

67

71

71

75

75

79

79

DRUMS

83

Musical notation for drum set at measure 83. The top staff shows a snare drum pattern with eighth notes and rests. The bottom staff shows a bass drum pattern with quarter notes and rests.

87

Musical notation for drum set at measure 87. The top staff shows a snare drum pattern with eighth notes and rests. The bottom staff shows a bass drum pattern with quarter notes and rests.

91

Musical notation for drum set at measure 91. The top staff shows a snare drum pattern with eighth notes and rests. The bottom staff shows a bass drum pattern with quarter notes and rests.

95

Musical notation for drum set at measure 95. The top staff shows a snare drum pattern with eighth notes and rests. The bottom staff shows a bass drum pattern with quarter notes and rests.

98

Musical notation for drum set at measure 98. The top staff shows a snare drum pattern with eighth notes and rests. The bottom staff shows a bass drum pattern with quarter notes and rests. A double bar line is present at the end of the measure.

VIBRAPHONE

Vanessa - Strasse Der Liebe

♩ = 105,001572

2

7

12

17

22

28

33

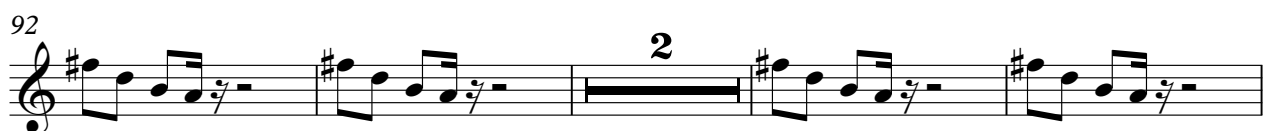
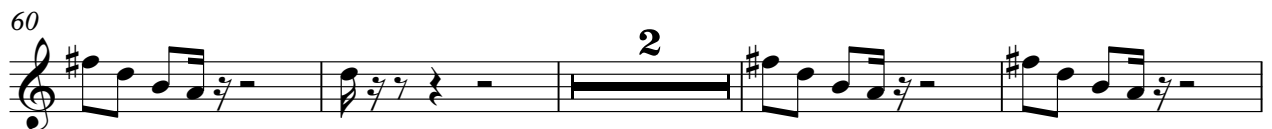
2

2

2

The image displays a musical score for a vibraphone part in 4/4 time. The tempo is indicated as 105,001572. The score consists of seven staves of music. The first staff starts with a measure containing a whole note chord (F#4, A4, C5) marked with a '2' above it. The subsequent staves show a melodic line with slurs and accents. The key signature has one sharp (F#). The score includes various musical notations such as slurs, accents, and dynamic markings like '2'.

VIBRAPHONE



VIBRAPHONE

98

3

2

A.GUITAR

Vanessa - Strasse Der Liebe

♩ = 105,001572

2 7

13

18

22

27

30

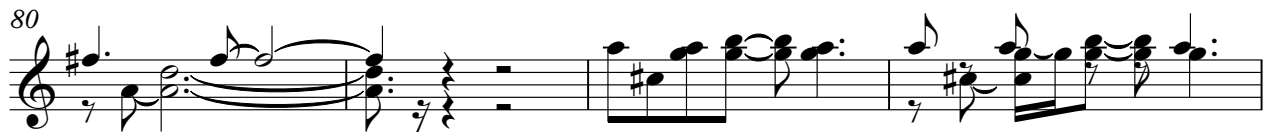
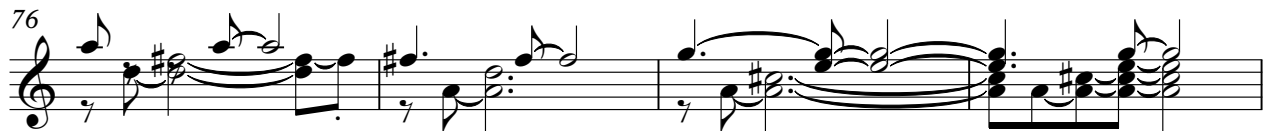
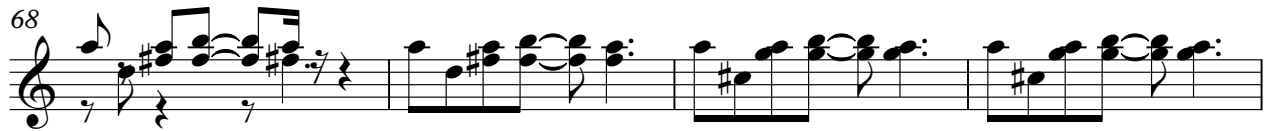
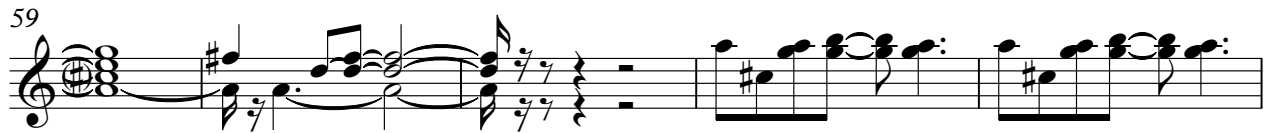
33

36

40

44

V.S.



A.GUITAR

3

91



95



98



FINGERDBAS

Vanessa - Strasse Der Liebe

♩ = 105,001572

2

8

14

20

26

32

37

42

48

54

V.S.

60



65



70



75



80



85



91



96



99



Vanessa - Strasse Der Liebe

SYNTH BASS

♩ = 105,001572

2



V.S.

24



27



29



31



33



35



37



39



41



43



45



47



49



51



53



55



57



59



62



64



V.S.

66



68



70



72



74



76



79



82



84



86



88



90



92



94



96



98



3

PIZZICATO

Vanessa - Strasse Der Liebe

$\text{♩} = 105,001572$

2

6

8

10

12

14

16

18

The image shows a musical score for guitar pizzicato. It consists of eight staves of music. The first staff begins with a treble clef, a 4/4 time signature, and a tempo marking of quarter note = 105,001572. The music starts with a measure of rest, followed by a double bar line and a '2' above the staff. The subsequent staves (6, 8, 10, 12, 14, 16, 18) show a series of chords with a rhythmic pattern of eighth notes. The key signature has one sharp (F#). The score ends with a double bar line and a 'V.S.' marking.

V.S.

PIZZICATO

20



22



24



27



29



31



33



35



PIZZICATO

37

39

41

43

45

47

49

51

V.S.

PIZZICATO

53



55



57



59



62



64



66



68

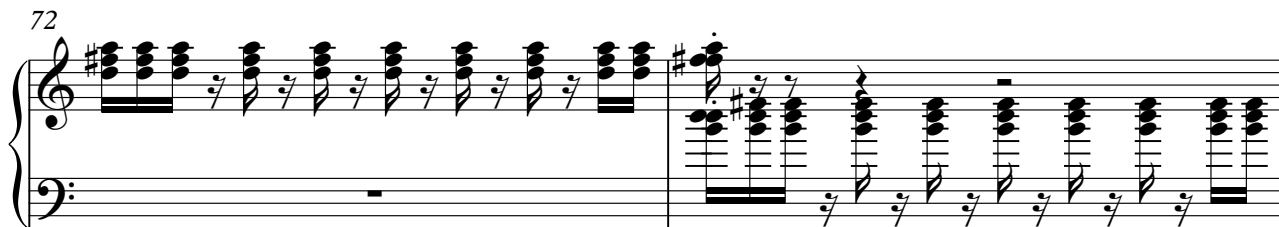


PIZZICATO

70



72



74



76



78



80



83



85



V.S.

PIZZICATO

87



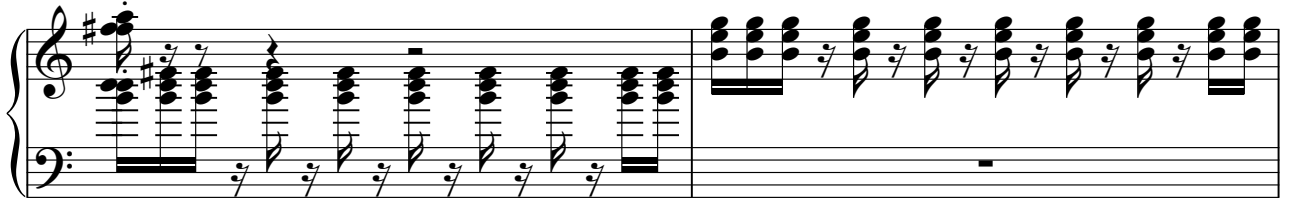
89



91



93



95



97



99



SYN STRING

Vanessa - Strasse Der Liebe

♩ = 105,001572

2

11

19

27

36

45

54

62

71


80

V.S.

2

SYN STRING

88



Musical notation for measure 88, featuring a treble clef and a key signature of one sharp (F#). The measure contains six notes: F#4, G4, A4, B4, C5, and D5. The notes are grouped into pairs with slurs: (F#4, G4), (A4, B4), and (C5, D5). The first two pairs are beamed together, and the last pair is also beamed together. The notes are positioned on the staff lines: F#4 on the first space, G4 on the first line, A4 on the second space, B4 on the second line, C5 on the third space, and D5 on the third line.

95



Musical notation for measure 95, featuring a treble clef and a key signature of one sharp (F#). The measure contains six notes: F#4, G4, A4, B4, C5, and D5. The notes are grouped into pairs with slurs: (F#4, G4), (A4, B4), and (C5, D5). The first two pairs are beamed together, and the last pair is also beamed together. The notes are positioned on the staff lines: F#4 on the first space, G4 on the first line, A4 on the second space, B4 on the second line, C5 on the third space, and D5 on the third line. A fermata is placed over the final two notes, C5 and D5, and the number '2' is written above the staff.

A.PIANO

Vanessa - Strasse Der Liebe

♩ = 105,001572

7

12

16

21

26

31

36

41

46

V.S.

51



56



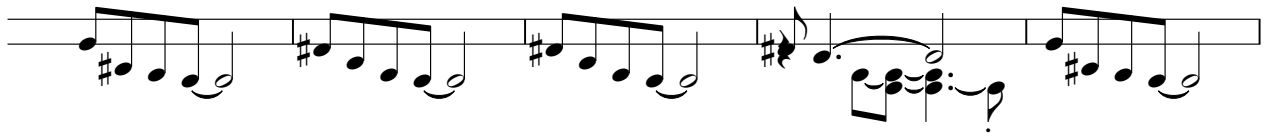
61



66



71



76



81



86



91



96



99

