

1970 - Make It With You Bread

♩ = 120,000000

Untitled

Untitled

Untitled

Untitled

2

Untitled

Untitled

Untitled

Untitled

2

3

Untitled

Untitled

Untitled

Untitled

4

Untitled

Untitled

Untitled

Untitled

5

System 5, measures 1-4. The system consists of five staves. The top staff is a bass clef with a key signature of one flat (B-flat) and a common time signature. The second staff is a guitar clef with a key signature of one flat and a common time signature. The third staff is a treble clef with a key signature of one flat and a common time signature. The fourth staff is a treble clef with a key signature of one flat and a common time signature, featuring a melodic line with a slur over measures 2 and 3. The fifth staff is a bass clef with a key signature of one flat and a common time signature, featuring a bass line with slurs and accents.

6

System 6, measures 1-4. The system consists of five staves. The top staff is a bass clef with a key signature of one flat (B-flat) and a common time signature. The second staff is a guitar clef with a key signature of one flat and a common time signature. The third staff is a treble clef with a key signature of one sharp (F-sharp) and a common time signature. The fourth staff is a treble clef with a key signature of one sharp and a common time signature, featuring a melodic line with a slur over measures 2 and 3. The fifth staff is a bass clef with a key signature of one sharp and a common time signature, featuring a bass line with slurs and accents.

7

Untitled

Untitled

Untitled

Untitled

Untitled

Untitled

Untitled

7

This system contains measures 7 and 8 of a musical score. It features six staves: a bass staff, a drum staff, and four treble staves. The bass staff begins with a key signature change to one flat (B-flat) and contains a series of chords and rests. The drum staff shows a rhythmic pattern of eighth notes. The four treble staves contain various melodic and harmonic lines, including a long phrase with a slur in the second staff and a final chord in the fifth staff.

8

Untitled

Untitled

Untitled

Untitled

Untitled

Untitled

8

This system contains measures 9 and 10 of the musical score. It features the same six-staff layout as the previous system. The bass staff continues with chords and rests. The drum staff shows a rhythmic pattern. The four treble staves contain melodic and harmonic lines, including a final chord in the fifth staff.

♩ = 120,000000

A musical staff in bass clef with a time signature of 8/4. The staff is divided into four measures. Below each measure is a guitar tablature diagram consisting of six horizontal lines representing strings. The first four lines of each diagram are grouped by a bracket on the left. A flat symbol (b) is placed below the first line of each diagram. The diagrams are identical in all four measures, representing a specific chord or fretting pattern.

5

A musical staff in bass clef divided into five measures. Below each measure is a guitar tablature diagram consisting of six horizontal lines representing strings. The first four lines of each diagram are grouped by a bracket on the left. A flat symbol (b) is placed below the first line of each diagram. The diagrams are identical in all five measures, representing a specific chord or fretting pattern. The fifth measure ends with a double bar line.

Untitled

1970 - Make It With You Bread

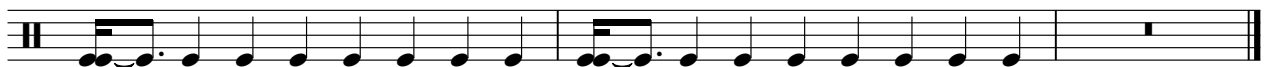
♩ = 120,000000



4



7



Untitled

1970 - Make It With You Bread

♩ = 120,000000

5

Untitled

1970 - Make It With You Bread

♩ = 120,000000

3

6

b2

Untitled

1970 - Make It With You Bread

♩ = 120,000000

5 # b

7

b # # # # #

1970 - Make It With You Bread

Untitled

♩ = 120,000000

1

2

3

4

5

6

7

8