

Johnny & His Orchestra Mercer - LAURA

♩ = 70,000237

DRUMS

MELODY

NYLON GTR

FRETLESS

SYN STR 2

This system contains five staves. The top staff is for DRUMS, showing a 4/4 time signature and four measures of rests. The MELODY staff is in treble clef, 4/4 time, with notes: quarter rest, quarter note G4, quarter note A4, quarter note B4, eighth notes G4, F4, E4, quarter note D4, quarter note C4, quarter note B3, quarter note A3, quarter note G3. A triplet of eighth notes (G4, F4, E4) is marked above measures 3 and 4. The NYLON GTR staff is in treble clef, 4/4 time, with chords: quarter rest, G4, A4, B4, quarter rest, G4, A4, B4, quarter rest, G4, A4, B4, quarter rest, G4, A4, B4, quarter rest, G4, A4, B4. The FRETLESS staff is in bass clef, 4/4 time, with notes: quarter rest, G2, quarter rest, G2, quarter rest, G2, quarter rest, G2. The SYN STR 2 staff is in treble clef, 4/4 time, with notes: quarter rest, G4, A4, B4, quarter rest, G4, A4, B4, quarter rest, G4, A4, B4, quarter rest, G4, A4, B4.

♩ = 70,000237

MELODY

NYLON GTR

FRETLESS

SYN STR 2

5

This system contains four staves. The MELODY staff is in treble clef, 4/4 time, with notes: quarter note G4, quarter note A4, quarter note B4, quarter note C5, eighth notes B4, A4, G4, quarter note F4, quarter note E4, quarter note D4. A triplet of eighth notes (B4, A4, G4) is marked above measures 3 and 4. The NYLON GTR staff is in treble clef, 4/4 time, with chords: G4, A4, B4, quarter rest, G4, A4, B4, quarter rest, G4, A4, B4, quarter rest, G4, A4, B4, quarter rest, G4, A4, B4, quarter rest, G4, A4, B4. The FRETLESS staff is in bass clef, 4/4 time, with notes: quarter rest, G2, quarter rest, G2, quarter rest, G2, quarter rest, G2. The SYN STR 2 staff is in treble clef, 4/4 time, with notes: quarter rest, G4, A4, B4, quarter rest, G4, A4, B4, quarter rest, G4, A4, B4, quarter rest, G4, A4, B4.

9

MELODY

NYLON GTR

FRETLESS

SYN STR 2

13

MELODY

NYLON GTR

FRETLESS

SYN STR 2

16

DRUMS

MELODY

NYLON GTR

FRETLESS

SYN STR 2

18

MELODY

NYLON GTR

FRETLESS

SYN STR 2

20

MELODY

NYLON GTR

FRETLESS

SYN STR 2

22

MELODY

NYLON GTR

FRETLESS

SYN STR 2

24

MELODY

NYLON GTR

FRETLESS

SYN STR 2

26

MELODY

NYLON GTR

FRETLESS

SYN STR 2

28

MELODY

NYLON GTR

FRETLESS

SYN STR 2

30

MELODY

NYLON GTR

FRETLESS

SYN STR 2

32

DRUMS

MELODY

NYLON GTR

FRETLESS

SYN STR 2

33

DRUMS

MELODY

NYLON GTR

FRETLESS

SYN STR 2

34

DRUMS

MELODY

NYLON GTR

FRETLESS

SYN STR 2

36

DRUMS

MELODY

NYLON GTR

FRETLESS

SYN STR 2

37

DRUMS

MELODY

NYLON GTR

FRETLESS

SYN STR 2

38

DRUMS

MELODY

NYLON GTR

FRETLESS

SYN STR 2

39

DRUMS

MELODY

NYLON GTR

FRETLESS

SYN STR 2

40

DRUMS

MELODY

NYLON GTR

FRETLESS

SYN STR 2

41

DRUMS

MELODY

NYLON GTR

FRETLESS

SYN STR 2

This musical score block covers measures 41 and 42. It consists of five staves: DRUMS, MELODY, NYLON GTR, FRETLESS, and SYN STR 2. Measure 41 starts with a drum pattern of eighth notes and a melody line with triplets. The nylon guitar part features complex chordal textures with many notes. The fretless guitar part has a simple bass line with eighth notes. The synth strings part provides a harmonic background with sustained notes.

42

DRUMS

MELODY

NYLON GTR

FRETLESS

SYN STR 2

This musical score block covers measures 43 and 44. It continues the arrangement from the previous block with the same five staves: DRUMS, MELODY, NYLON GTR, FRETLESS, and SYN STR 2. Measure 43 begins with a drum pattern and a melody line. The nylon guitar part continues with intricate chordal patterns. The fretless guitar part maintains its bass line. The synth strings part provides a consistent harmonic support.

43

DRUMS

MELODY

NYLON GTR

FRETLESS

SYN STR 2

44

DRUMS

MELODY

NYLON GTR

FRETLESS

SYN STR 2

45

DRUMS

MELODY

NYLON GTR

FRETLESS

SYN STR 2

46

DRUMS

MELODY

NYLON GTR

FRETLESS

SYN STR 2

47

DRUMS

MELODY

NYLON GTR

FRETLESS

SYN STR 2

48

DRUMS

MELODY

NYLON GTR

FRETLESS

SYN STR 2

50

DRUMS

MELODY

NYLON GTR

FRETLESS

SYN STR 2

52

DRUMS

MELODY

NYLON GTR

FRETLESS

SYN STR 2

54

DRUMS

MELODY

NYLON GTR

FRETLESS

SYN STR 2

56

DRUMS

MELODY

NYLON GTR

FRETLESS

SYN STR 2

58

DRUMS

MELODY

NYLON GTR

FRETLESS

SYN STR 2

60

DRUMS

MELODY

NYLON GTR

FRETLESS

SYN STR 2

62

DRUMS

MELODY

NYLON GTR

FRETLESS

SYN STR 2

65

MELODY

NYLON GTR

FRETLESS

SYN STR 2

DRUMS

Johnny & His Orchestra Mercer - LAURA

♩ = 70,000237

15 14

32

35

38

41

45

49

53

57

60 6

Johnny & His Orchestra Mercer - LAURA

MELODY

♩ = 70,000237

7

13

18

21

24

29

32

35

38

V.S.

41



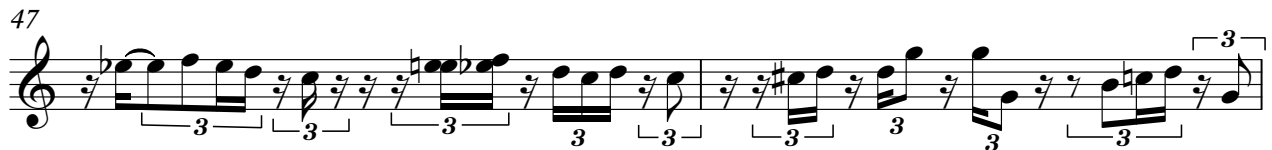
43



45



47



49



51



54



57



61



64



NYLON GTR

Johnny & His Orchestra Mercer - LAURA

♩ = 70,000237

8

16

22

27

31

33

36

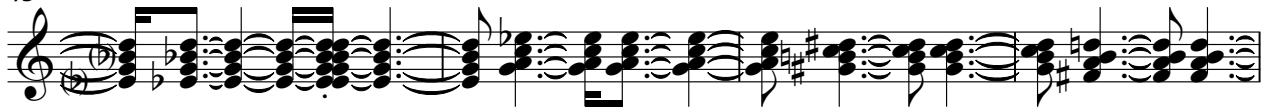
39

42

Detailed description: The score is written for Nylon Guitar in 4/4 time. It begins with a tempo marking of a quarter note equal to 70,000237. The first staff (measures 1-7) contains a series of chords, some with accidentals. The second staff (measures 8-15) continues with chords, some featuring slurs. The third staff (measures 16-21) includes chords with slurs and some melodic fragments. The fourth staff (measures 22-26) shows chords with slurs and some melodic lines. The fifth staff (measures 27-30) continues with chords and slurs. The sixth staff (measures 31-32) features a more complex melodic line with slurs. The seventh staff (measures 33-35) contains a dense sequence of chords with slurs. The eighth staff (measures 36-38) continues with chords and slurs. The ninth staff (measures 39-41) shows a similar pattern of chords and slurs. The tenth staff (measures 42-44) concludes with chords and slurs.

V.S.

45



49



54



59



64



FRETLESS

Johnny & His Orchestra Mercer - LAURA

♩ = 70,000237



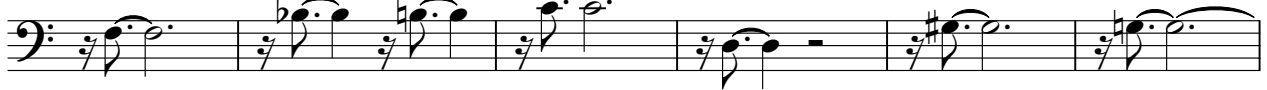
10



19



26



32



36



39



42



45



49



V.S.

♩ = 70,000237

6

12

18

23

27

31

34

38

42

V.S.

47

52

57

62

65