

♩ = 93,000038

♩ = 72,000031

♩ = 69,000006

♩ = 69,000015

♩ = 73,000069

♩ = 71,000038

♩ = 75,000000

Piccolo

Flute

Clarinet in B \flat

Horn in F

Baroque Trumpet

Trombone

Timpani

Percussion

Kora
LA_MER

Fretless Electric Bass

Bandoneon

♩ = 93,000038

♩ = 72,000031

♩ = 69,000006

♩ = 69,000015

♩ = 73,000069

♩ = 71,000038

♩ = 75,000000

Synth Strings

Synth Strings

Synth Strings

Synth Strings

2

8 $\text{♩} = 80,00000000000000092$ $\text{♩} = 93,000038$ $\text{♩} = 93,000060038$ $\text{♩} = 94,0000130$ $\text{♩} = 97,000107$

Fl.
Cl.
Hn.
Perc.
Kora
E. Bass
Syn. Str.
Syn. Str.
Syn. Str.

Detailed description: This musical score covers measures 8, 9, and 10. It features multiple staves for different instruments. Flute (Fl.) and Clarinet (Cl.) have rests in measures 8-9 and enter in measure 10 with a melodic line. Horns (Hn.) play a rhythmic pattern in measure 10. Percussion (Perc.) plays a consistent rhythmic pattern throughout. Kora plays chords in measure 10. Electric Bass (E. Bass) plays a melodic line with slurs in measures 8-9. Synthesizer Strings (Syn. Str.) play sustained chords in measures 8-9, indicated by a double bar line and a fermata-like symbol.



11

Fl.
Cl.
Hn.
Perc.
Kora
E. Bass
Band.
Syn. Str.

Detailed description: This musical score covers measures 11, 12, and 13. Flute (Fl.) and Clarinet (Cl.) continue their melodic lines from measure 10. Horns (Hn.) play a melodic line with slurs. Percussion (Perc.) maintains its rhythmic pattern. Kora plays chords with some rests. Electric Bass (E. Bass) continues its melodic line. Band plays a simple bass line. Synthesizer Strings (Syn. Str.) play a single sustained chord in measure 11.

14

Hn.
Perc.
Kora
E. Bass
Band.
Syn. Str.

Detailed description: This system contains measures 14, 15, and 16. The Horn (Hn.) part has a whole rest in measure 14 and a half note in measure 15. The Percussion (Perc.) part has a consistent rhythmic pattern of eighth notes with accents. The Kora part features chords and a melodic line with a 7/8 time signature change in measure 15. The Electric Bass (E. Bass) part has a simple bass line. The Band part has a melodic line with a triplet in measure 16. The Synthesizer String (Syn. Str.) part has a few notes in measure 14 and 16.



17

Perc.
Kora
E. Bass
Band.
Syn. Str.

Detailed description: This system contains measures 17, 18, and 19. The Percussion (Perc.) part continues its rhythmic pattern. The Kora part has chords and a melodic line. The Electric Bass (E. Bass) part has a bass line. The Band part has a melodic line with triplets in measures 18 and 19. The Synthesizer String (Syn. Str.) part has a melodic line with a triplet in measure 17.



20

Perc.
Kora
E. Bass
Band.
Syn. Str.
Syn. Str.

Detailed description: This system contains measures 20, 21, and 22. The Percussion (Perc.) part continues its rhythmic pattern. The Kora part has chords and a melodic line. The Electric Bass (E. Bass) part has a bass line. The Band part has a melodic line with a triplet in measure 22. The Synthesizer String (Syn. Str.) part has a melodic line with a 7/8 time signature change in measure 20.

23

Fl.
Cl.
Perc.
Kora
E. Bass
Band.
Syn. Str.
Syn. Str.
Syn. Str.

Detailed description: This system of music covers measures 23, 24, and 25. The Flute and Clarinet parts are mostly rests, with some notes in measure 25. The Percussion part features a complex rhythmic pattern with many 'x' marks above the notes. The Kora part consists of chords and single notes. The Electric Bass part has a simple line of notes. The Band part has a melodic line with sixteenth-note runs in measure 25, marked with a '6'. The Synthesizer Strings part has a melodic line with triplets in measure 25, marked with a '3'.



26

Perc.
Kora
E. Bass
Syn. Str.
Syn. Str.
Syn. Str.

Detailed description: This system of music covers measures 26, 27, and 28. The Percussion part continues with its complex rhythmic pattern. The Kora part has chords and notes. The Electric Bass part has a simple line of notes. The Synthesizer Strings part has a melodic line with triplets in measure 28, marked with a '3'.

29

Bar. Tpt.
Perc.
Kora
E. Bass
Syn. Str.
Syn. Str.
Syn. Str.

Detailed description: This musical score block covers measures 29, 30, and 31. It features seven staves: Baritone Trumpet (Bar. Tpt.), Percussion (Perc.), Kora, Electric Bass (E. Bass), and three Synthesizer Strings (Syn. Str.) staves. The Bar. Tpt. staff has a whole rest in measure 29 and a half note in measure 30. The Perc. staff has a consistent rhythmic pattern of eighth notes with 'x' marks above them. The Kora staff plays chords in measure 29 and rests in measure 30. The E. Bass staff has a melodic line with eighth and quarter notes. The top Syn. Str. staff has a melodic line with a triplet of eighth notes in measure 30. The middle and bottom Syn. Str. staves have chords and rests.



32

Bar. Tpt.
Perc.
Kora
E. Bass
Band.
Syn. Str.
Syn. Str.
Syn. Str.

Detailed description: This musical score block covers measures 32, 33, and 34. It features eight staves: Baritone Trumpet (Bar. Tpt.), Percussion (Perc.), Kora, Electric Bass (E. Bass), Band, and three Synthesizer Strings (Syn. Str.) staves. The Bar. Tpt. staff has a half note in measure 32 and rests in measures 33 and 34. The Perc. staff continues with its rhythmic pattern. The Kora staff has chords in measure 32 and a complex figure in measure 33. The E. Bass staff has a melodic line. The Band staff has a whole rest in measure 32 and a triplet of eighth notes in measure 34. The top Syn. Str. staff has a melodic line with a sextuplet of eighth notes in measure 33. The middle and bottom Syn. Str. staves have chords and rests.

35

Picc.
Cl.
Bar. Tpt.
Perc.
Kora
E. Bass
Band.
Syn. Str.
Syn. Str.
Syn. Str.

Detailed description: This system of music covers measures 35, 36, and 37. The Piccolo (Picc.) and Clarinet (Cl.) parts are mostly silent, with a few notes in measure 37. The Baritone Trumpet (Bar. Tpt.) has a long note in measure 37. The Percussion (Perc.) part features a complex, rhythmic pattern of eighth and sixteenth notes with accents. The Kora part consists of chords and single notes. The Electric Bass (E. Bass) has a simple melodic line. The Band part has a few notes in measure 37. The Synthesizer Strings (Syn. Str.) part has a melodic line with triplets in measure 37. The other two Syn. Str. parts have chordal accompaniment.



38

Picc.
Fl.
Cl.
Bar. Tpt.
Perc.
Kora
E. Bass
Syn. Str.
Syn. Str.

Detailed description: This system of music covers measures 38, 39, and 40. The Piccolo (Picc.) part has a melodic line starting in measure 38. The Flute (Fl.) part has a few notes in measure 38. The Clarinet (Cl.) part has a long note in measure 38. The Baritone Trumpet (Bar. Tpt.) has a long note in measure 38. The Percussion (Perc.) part continues with its rhythmic pattern. The Kora part has chords and single notes. The Electric Bass (E. Bass) has a simple melodic line. The Synthesizer Strings (Syn. Str.) part has a melodic line with long notes. The other two Syn. Str. parts have chordal accompaniment.

41

Picc.
Cl.
Bar. Tpt.
Tbn.
Perc.
Kora
E. Bass
Syn. Str.
Syn. Str.
Syn. Str.

Detailed description: This system contains measures 41, 42, and 43. The Piccolo (Picc.) part has a melodic line starting on a whole note in measure 41, followed by eighth notes in measure 42, and a half note in measure 43. The Clarinet (Cl.) part is silent in measure 41, then plays a rhythmic eighth-note pattern in measures 42 and 43. The Baritone Trumpet (Bar. Tpt.) and Trombone (Tbn.) parts are silent in measure 41, then play chords in measures 42 and 43. The Percussion (Perc.) part has a consistent eighth-note pattern with accents. The Kora part has a complex rhythmic pattern with many beamed notes. The Electric Bass (E. Bass) part has a simple eighth-note line. The Synthesizer Strings (Syn. Str.) part has a melodic line in measure 41, then a rhythmic eighth-note pattern in measures 42 and 43.



44

Picc.
Cl.
Bar. Tpt.
Tbn.
Perc.
Kora
E. Bass
Syn. Str.
Syn. Str.

Detailed description: This system contains measures 44, 45, and 46. The Piccolo (Picc.) part has a melodic line starting on a whole note in measure 44, followed by a quarter note in measure 45, and a quarter rest in measure 46. The Clarinet (Cl.) part is silent in measure 44, then plays a triplet eighth-note pattern in measure 45, and a quarter note in measure 46. The Baritone Trumpet (Bar. Tpt.) and Trombone (Tbn.) parts are silent in measure 44, then play chords in measures 45 and 46. The Percussion (Perc.) part has a consistent eighth-note pattern with accents. The Kora part has a complex rhythmic pattern with many beamed notes. The Electric Bass (E. Bass) part has a simple eighth-note line. The Synthesizer Strings (Syn. Str.) part has a melodic line in measure 44, then a rhythmic eighth-note pattern in measures 45 and 46.

47

Cl.
Hn.
Bar. Tpt.
Tbn.
Perc.
Kora
E. Bass
Syn. Str.
Syn. Str.

Detailed description: This system of musical notation covers measures 47 and 48. The instruments listed are Clarinet (Cl.), Horn (Hn.), Baritone Trumpet (Bar. Tpt.), Trombone (Tbn.), Percussion (Perc.), Kora, Electric Bass (E. Bass), and two strings (Syn. Str.). Measure 47 shows the Clarinet and Horn with rests, while the Baritone Trumpet and Trombone play eighth notes. The Percussion part features a complex rhythmic pattern with accents. The Kora plays chords, and the Electric Bass plays a simple line. The strings play a melodic line in measure 47 and a sustained chord in measure 48.



49

Cl.
Hn.
Bar. Tpt.
Tbn.
Timp.
Perc.
Kora
E. Bass
Syn. Str.
Syn. Str.
Syn. Str.

Detailed description: This system of musical notation covers measures 49 and 50. The instruments listed are Clarinet (Cl.), Horn (Hn.), Baritone Trumpet (Bar. Tpt.), Trombone (Tbn.), Timpani (Timp.), Percussion (Perc.), Kora, Electric Bass (E. Bass), and three strings (Syn. Str.). Measure 49 features a prominent Timpani part with sixteenth-note patterns marked with '6'. The Baritone Trumpet and Trombone play chords. The Percussion part continues with its rhythmic pattern. The Kora plays chords, and the Electric Bass plays a line. The strings play a melodic line with triplets in measure 49 and a sustained chord in measure 50.

51

Picc.

Hn.

Bar. Tpt.

Tbn.

Perc.

Kora

E. Bass

Syn. Str.

Syn. Str.

Detailed description: This page of a musical score covers measures 51, 52, and 53. The Piccolo part (measures 51-53) has a whole rest in measure 51, followed by quarter notes G4, F4, and E4 in measures 52 and 53. The Horn part (measures 51-53) has a whole note G#4 in measure 51, a whole note F4 in measure 52, and a whole note E4 in measure 53. The Baritone Trumpet part (measures 51-53) has a whole note G#4 in measure 51, a whole note F4 in measure 52, and a whole note E4 in measure 53. The Trombone part (measures 51-53) has a whole note G#4 in measure 51, a whole note F4 in measure 52, and a whole note E4 in measure 53. The Percussion part (measures 51-53) has a consistent rhythmic pattern of eighth notes with accents. The Kora part (measures 51-53) has a melodic line with various chords and rests. The Electric Bass part (measures 51-53) has a bass line with eighth and quarter notes. The two Synthesizer string parts (measures 51-53) have complex melodic lines with triplets and slurs.

54

Picc.

Cl.

Hn.

Bar. Tpt.

Tbn.

Perc.

Kora

E. Bass

Band

Syn. Str.

Syn. Str.

Syn. Str.

Syn. Str.

♩ = 88,000023 ♩ = 76,000069 ♩ = 83,000069 ♩ = 65,000069



58

Hn.

Timp.

Perc.

Band

Syn. Str.

Syn. Str.

Syn. Str.

♩ = 76,000069 ♩ = 67,000031 ♩ = 67,000031 ♩ = 62,000061 ♩ = 64,000000 ♩ = 55,000004

♩ = 76,000069 ♩ = 67,000031 ♩ = 67,000031 ♩ = 62,000061 ♩ = 64,000000 ♩ = 55,000004

♩ = 60,000000 ♩ = 45,000011

62 $\text{♩} = 67,000031$

Hn.

Timp.

Perc.

Band.

Syn. Str.

Syn. Str.

Syn. Str.

63

Picc.

Fl.

Cl.

Hn.

Bar. Tpt.

Tbn.

Timp.

Perc.

Kora

E. Bass

Band.

Syn. Str.

Syn. Str.

Syn. Str.

Syn. Str.

Piccolo

♩ = 93,000038 ♩ = 72,000011 ♩ = 69,000150 ♩ = 79,000033 ♩ = 99,000033 ♩ = 99,000033 ♩ = 99,000033 ♩ = 99,000033 ♩ = 99,000033 ♩ = 99,000033 ♩ = 99,000033 ♩ = 99,000033 ♩ = 99,000033

Musical staff with a measure of rest marked with a '2' above it.

10 ♩ = 97,000107

Musical staff with a measure of rest marked with a '27' above it, followed by a sequence of notes including a quarter note, eighth notes, and a dotted half note with a sharp sign.

41

Musical staff with notes including a quarter note, eighth notes, and a dotted half note with a sharp sign, followed by a measure of rest marked with a '7' above it.

53 ♩ = 88,000230 ♩ = 88,000569 ♩ = 77,000739 ♩ = 77,000031

Musical staff with notes including a quarter note, eighth notes, and a dotted half note with a sharp sign, followed by a measure of rest.

60 ♩ = 60,000015 ♩ = 67,000034

Musical staff with a measure of rest marked with a '2' above it, followed by notes including a quarter note, eighth notes, and a dotted half note with a sharp sign.

Flute

♩ = 93,000038 ♩ = 72,000003 ♩ = 69,000015 ♩ = 73,000069 ♩ = 75,000068

8 ♩ = 89,000030 ♩ = 91,000032 ♩ = 92,000033 ♩ = 93,000034 ♩ = 94,000035 ♩ = 95,000036 ♩ = 96,000037 ♩ = 97,000038 ♩ = 98,000039 ♩ = 99,000040 ♩ = 100,000041

14 10 12 ♩ = 100,000042 ♩ = 101,000043

39 16 ♩ = 88,000023 ♩ = 78,000069 ♩ = 65,000006

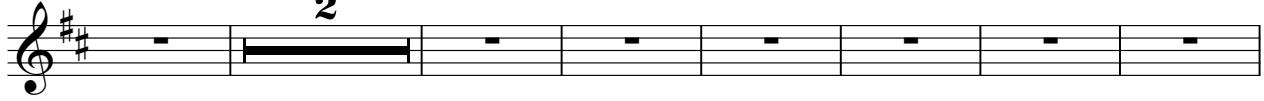
58 ♩ = 76,000069 ♩ = 67,000067 ♩ = 66,000065 ♩ = 62,000045 ♩ = 66,000000 ♩ = 63,000084

3

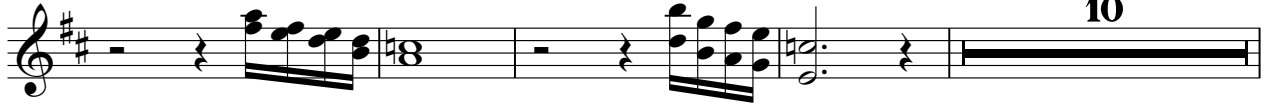
Clarinet in B \flat

$\text{♩} = 93,000038 \text{ } \text{♩} = 72,000069 \text{ } \text{♩} = 69,000072 \text{ } \text{♩} = 67,000079 \text{ } \text{♩} = 65,000083 \text{ } \text{♩} = 63,000088 \text{ } \text{♩} = 61,000093 \text{ } \text{♩} = 59,000098 \text{ } \text{♩} = 57,000103 \text{ } \text{♩} = 55,000108 \text{ } \text{♩} = 53,000113 \text{ } \text{♩} = 51,000118 \text{ } \text{♩} = 49,000123 \text{ } \text{♩} = 47,000128 \text{ } \text{♩} = 45,000133 \text{ } \text{♩} = 43,000138 \text{ } \text{♩} = 41,000143 \text{ } \text{♩} = 39,000148 \text{ } \text{♩} = 37,000153 \text{ } \text{♩} = 35,000158 \text{ } \text{♩} = 33,000163 \text{ } \text{♩} = 31,000168 \text{ } \text{♩} = 29,000173 \text{ } \text{♩} = 27,000178 \text{ } \text{♩} = 25,000183 \text{ } \text{♩} = 23,000188 \text{ } \text{♩} = 21,000193 \text{ } \text{♩} = 19,000198 \text{ } \text{♩} = 17,000203 \text{ } \text{♩} = 15,000208 \text{ } \text{♩} = 13,000213 \text{ } \text{♩} = 11,000218 \text{ } \text{♩} = 9,000223 \text{ } \text{♩} = 7,000228 \text{ } \text{♩} = 5,000233 \text{ } \text{♩} = 3,000238 \text{ } \text{♩} = 1,000243$


2



10 $\text{♩} = 97,000107$




24




40



45



56 $\text{♩} = 88,000023 \text{ } \text{♩} = 76,000069 \text{ } \text{♩} = 65,000069 \text{ } \text{♩} = 76,000069 \text{ } \text{♩} = 67,000063 \text{ } \text{♩} = 67,000063 \text{ } \text{♩} = 64,000066 \text{ } \text{♩} = 61,000069 \text{ } \text{♩} = 58,000072 \text{ } \text{♩} = 55,000075 \text{ } \text{♩} = 52,000078 \text{ } \text{♩} = 49,000081 \text{ } \text{♩} = 46,000084 \text{ } \text{♩} = 43,000087 \text{ } \text{♩} = 40,000090 \text{ } \text{♩} = 37,000093 \text{ } \text{♩} = 34,000096 \text{ } \text{♩} = 31,000099 \text{ } \text{♩} = 28,000102 \text{ } \text{♩} = 25,000105 \text{ } \text{♩} = 22,000108 \text{ } \text{♩} = 19,000111 \text{ } \text{♩} = 16,000114 \text{ } \text{♩} = 13,000117 \text{ } \text{♩} = 10,000120 \text{ } \text{♩} = 7,000123 \text{ } \text{♩} = 4,000126 \text{ } \text{♩} = 1,000129$



62 $\text{♩} = 67,000031$



Horn in F

♪ = 93,000038 = 72,000000 = 69,000015 = 5000173,000076 = 65,000090 = 00000000 = 00000000 = 00107

2

11

17

31

53

♪ = 88,000020 = 68,000069 = 76,000090 = 10316,000006

61

♪ = 64,000000

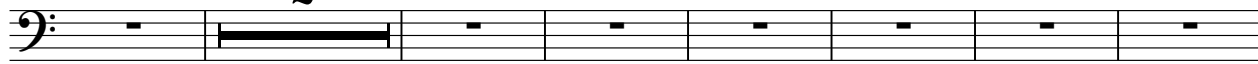
♪ = 55,000004

♪ = 67,000031

Timpani

♩ = 93,000038 ♩ = 72,000002 ♩ = 69,000015 ♩ = 79,000000 ♩ = 89,000000 ♩ = 99,000000 ♩ = 109,000000 ♩ = 119,000000 ♩ = 129,000000 ♩ = 139,000000


2



10 ♩ = 97,000107

39

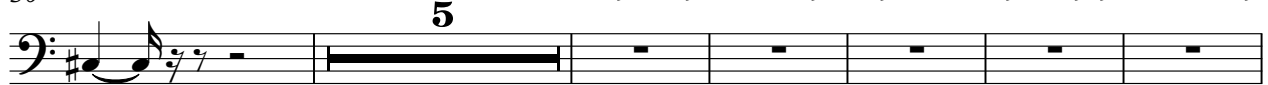
6 **6** **6** **6**



50

5

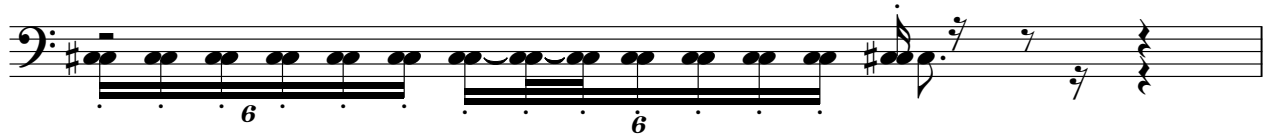
♩ = 88,000000 ♩ = 82,000000 ♩ = 76,000000 ♩ = 70,000000 ♩ = 64,000000



61 ♩ = 64,000000

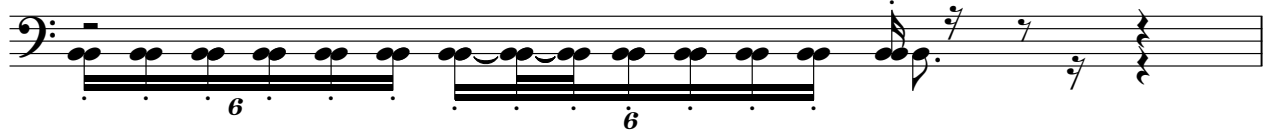
6 **6**

♩ = 55,000004



62 ♩ = 67,000031

6 **6**

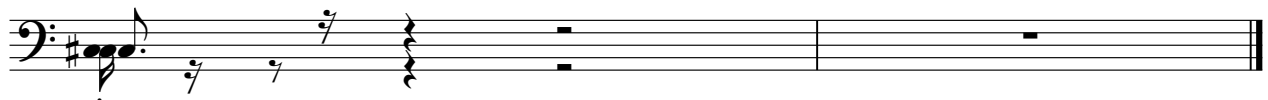


63

6 **6** **6** **6**

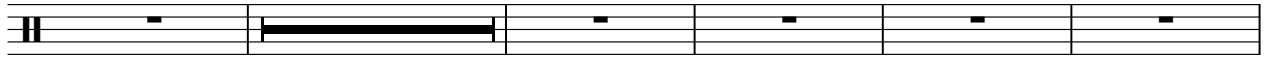


64

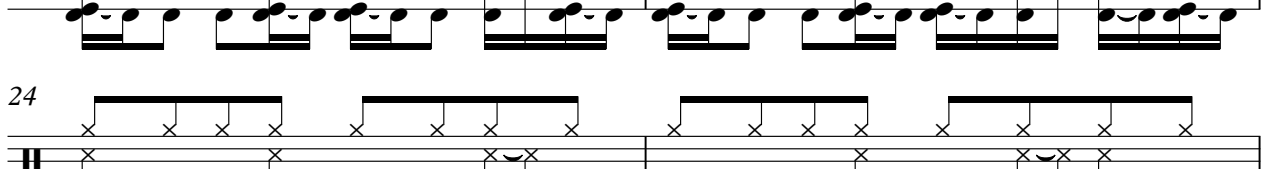
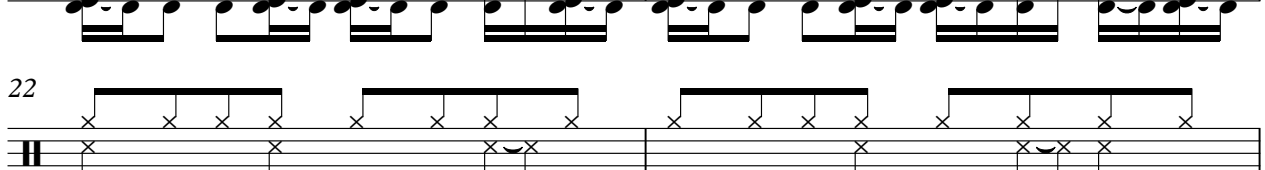
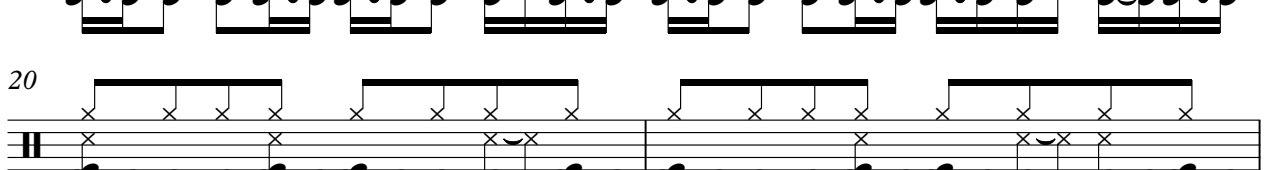
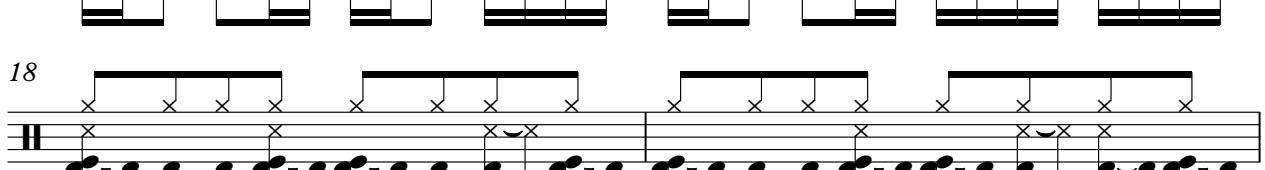
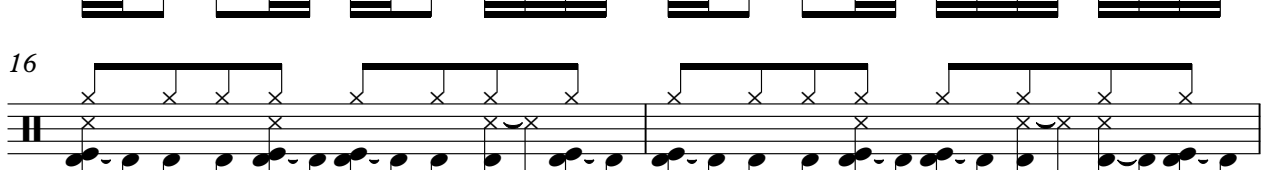
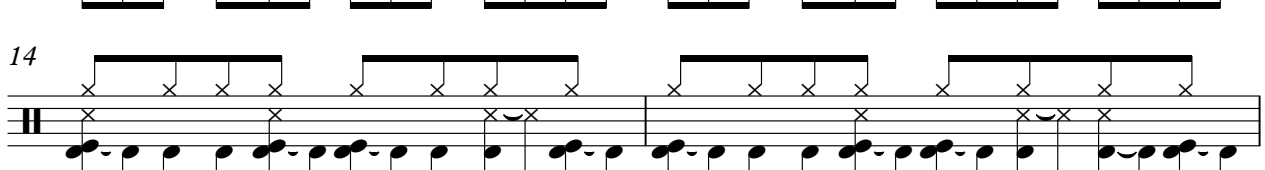
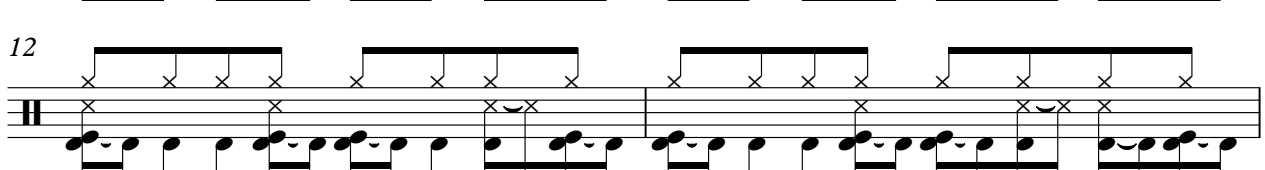
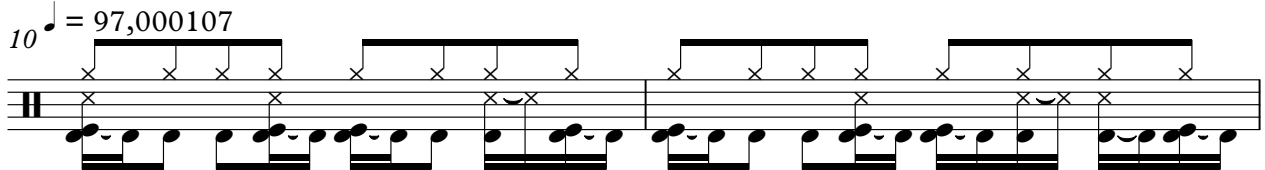
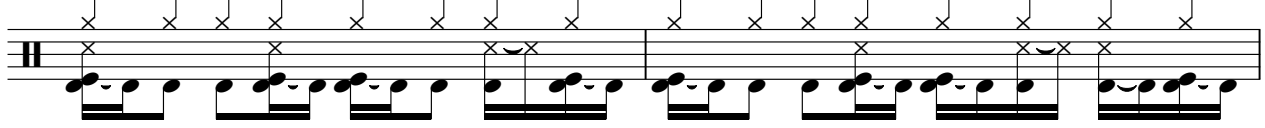


Percussion

♩ = 93,000038 ♩ = 72,000075,1000000 ♩ = 69,000015 ♩ = 73,000069 ♩ = 71,5000380
2



8 ♩ = 80,000089,000038 ♩ = 91,000092,000038 ♩ = 93,000038 ♩ = 93,000038 ♩ = 94,000130 ♩ = 94,000130



V.S.

26

Two staves of music. The top staff shows a series of 'x' marks on a five-line staff, indicating a rhythmic pattern. The bottom staff shows a corresponding rhythmic pattern with eighth and sixteenth notes, some with stems pointing down.

28

Two staves of music. The top staff shows a series of 'x' marks on a five-line staff. The bottom staff shows a rhythmic pattern with eighth and sixteenth notes, some with stems pointing down.

30

Two staves of music. The top staff shows a series of 'x' marks on a five-line staff. The bottom staff shows a rhythmic pattern with eighth and sixteenth notes, some with stems pointing down.

32

Two staves of music. The top staff shows a series of 'x' marks on a five-line staff. The bottom staff shows a rhythmic pattern with eighth and sixteenth notes, some with stems pointing down.

34

Two staves of music. The top staff shows a series of 'x' marks on a five-line staff. The bottom staff shows a rhythmic pattern with eighth and sixteenth notes, some with stems pointing down.

36

Two staves of music. The top staff shows a series of 'x' marks on a five-line staff. The bottom staff shows a rhythmic pattern with eighth and sixteenth notes, some with stems pointing down.

38

Two staves of music. The top staff shows a series of 'x' marks on a five-line staff. The bottom staff shows a rhythmic pattern with eighth and sixteenth notes, some with stems pointing down.

40

Two staves of music. The top staff shows a series of 'x' marks on a five-line staff. The bottom staff shows a rhythmic pattern with eighth and sixteenth notes, some with stems pointing down.

42

Two staves of music. The top staff shows a series of 'x' marks on a five-line staff. The bottom staff shows a rhythmic pattern with eighth and sixteenth notes, some with stems pointing down.

44

Two staves of music. The top staff shows a series of 'x' marks on a five-line staff. The bottom staff shows a rhythmic pattern with eighth and sixteenth notes, some with stems pointing down.

46

48

50

52

54

♩ = 88,000000

57

♩ = 83,000000 = 76,000000 = 67,000000 = 63,000000 = 59,000000 = 55,000004

62

♩ = 67,000031

63

49



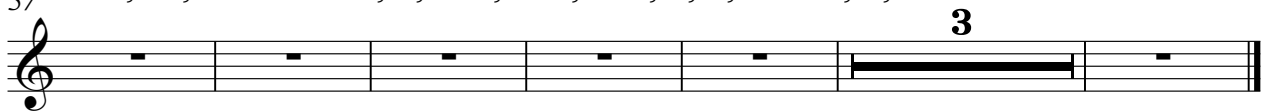
53

♩ = 88,0000000069



57

♩ = 83,0000000069 ♩ = 76,0000000073 ♩ = 60,0000000063 ♩ = 62,0000000069 ♩ = 75,0000000031



Fretless Electric Bass

♩ = 93,000038 ♩ = 72,000015 = 69,000015 = 71,000038 = 69,000015 = 93,000038

2

9 ♩ = 93,000038 ♩ = 97,000107

14

20

26

32

37

42

47

52 ♩ = 88,000023 ♩ = 76,00006

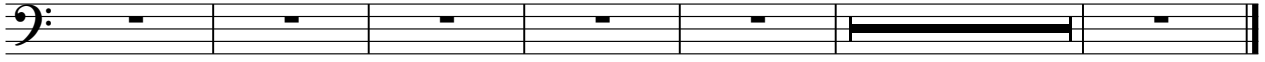
V.S.

2

Fretless Electric Bass


57 = 83,065,069 069 = 76,67,03,07,31 0031 02,05,04 00 05,67,0000 31

3



Synth Strings

♩ = 93,000038 ♩ = 72,0000000000000015 = 69,000015 ♩ = 73,000069 = 71,0000000000000023




2

9 ♩ = 93,0000000000000007

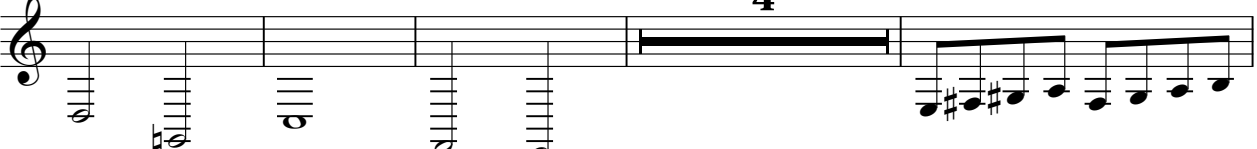


16

30



35



4

43

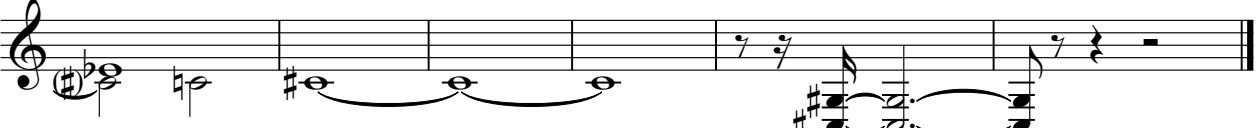


49 ♩ = 88,0000200000000069 ♩ = 82,000000000069 ♩ = 76,000069 ♩ = 67,0000000031



6

60 ♩ = 60,0000000000000001 ♩ = 61,0000000000000001 ♩ = 64,0000000000000001 ♩ = 67,0000000000000001



Synth Strings

♩ = 93,000038 ♩ = 72,000000 ♩ = 69,000015 ♩ = 73,000069 ♩ = 69,000000 ♩ = 73,000000 ♩ = 69,000000 ♩ = 73,000000

2

9

10

24

31

39

47

54

♩ = 88,000076 ♩ = 76,000069 ♩ = 83,000000 ♩ = 76,000069

59

♩ = 67,000003 ♩ = 69,000000 ♩ = 64,000031

Synth Strings

♩ = 93,000038 ♩ = 72,000000 ♩ = 69,000015 ♩ = 73,000069 ♩ = 71,000078 ♩ = 89,000023

2

9 ♩ = 93,000038 ♩ = 107

9

17

17

23 ♩ = 88,000023 ♩ = 1000069

23

30

57 ♩ = 83,000069 ♩ = 65,000069 ♩ = 76,000069 ♩ = 67,000031 ♩ = 60,000000 ♩ = 64,000004

57

62 ♩ = 67,000031

62