

# Onbekende Songs & Demo`s - METAPHOR

♩ = 180,001801

DRUMS

FRETLESS



DRUMS

FRETLESS

3



DRUMS

STEEL GTR

FRETLESS

5



DRUMS

STEEL GTR

FRETLESS

6

2

7

DRUMS

STEEL GTR

FRETLESS



8

DRUMS

STEEL GTR

FRETLESS



9

DRUMS

STEEL GTR

FRETLESS



10

DRUMS

STEEL GTR

FRETLESS

11

DRUMS

STEEL GTR

FRETLESS



12

DRUMS

STEEL GTR

FRETLESS



13

DRUMS

STEEL GTR

FRETLESS

WARM PAD

14

DRUMS

STEEL GTR

FRETLESS

WARM PAD



15

DRUMS

STEEL GTR

FRETLESS

WARM PAD



16

DRUMS

STEEL GTR

FRETLESS

WARM PAD

17

DRUMS

STEEL GTR

FRETLESS

WARM PAD



18

DRUMS

STEEL GTR

FRETLESS

WARM PAD



19

DRUMS

STEEL GTR

FRETLESS

WARM PAD

20

DRUMS

STEEL GTR

FRETLESS

WARM PAD

Double bar line

21

DRUMS

STEEL GTR

FRETLESS

WARM PAD

Double bar line

22

DRUMS

STEEL GTR

FRETLESS

WARM PAD

Double bar line

23

DRUMS

STEEL GTR

FRETLESS

WARM PAD



24

DRUMS

STEEL GTR

FRETLESS

WARM PAD



25

DRUMS

STEEL GTR

FRETLESS

WARM PAD

26

DRUMS

STEEL GTR

FRETLESS

WARM PAD

MEASURE 26: DRUMS (complex rhythmic pattern), STEEL GTR (few notes), FRETLESS (melodic line), WARM PAD (sustained chord with tremolo).

MEASURE 27: DRUMS (complex rhythmic pattern), STEEL GTR (few notes), FRETLESS (melodic line), WARM PAD (sustained chord with tremolo).



27

DRUMS

FRETLESS

WARM PAD

MEASURE 27: DRUMS (complex rhythmic pattern), FRETLESS (melodic line), WARM PAD (empty).

MEASURE 28: DRUMS (complex rhythmic pattern), FRETLESS (melodic line), WARM PAD (empty).



28

DRUMS

FRETLESS

WARM PAD

MEASURE 28: DRUMS (complex rhythmic pattern), FRETLESS (melodic line), WARM PAD (sustained chord with tremolo).

MEASURE 29: DRUMS (complex rhythmic pattern), FRETLESS (melodic line), WARM PAD (sustained chord with tremolo).



29

DRUMS

FRETLESS

CALLIOPE

WARM PAD



31

DRUMS

FRETLESS

CALLIOPE

WARM PAD



32

DRUMS

FRETLESS

CALLIOPE

WARM PAD

33

DRUMS

FRETLESS

CALLIOPE

WARM PAD



34

DRUMS

FRETLESS

CALLIOPE

WARM PAD

A.PIANO 2

35

DRUMS

FRETLESS

CALLIOPE

WARM PAD

A.PIANO 2



36

DRUMS

FRETLESS

CALLIOPE

WARM PAD

A.PIANO 2

38

DRUMS

FRETLESS

CALLIOPE

WARM PAD

A.PIANO 2



39

DRUMS

FRETLESS

CALLIOPE

WARM PAD

A.PIANO 2

40

DRUMS

FRETLESS

CALLIOPE

WARM PAD

A.PIANO 2



41

DRUMS

FRETLESS

CALLIOPE

WARM PAD

A.PIANO 2

42

DRUMS

FRETLESS

CALLIOPE

WARM PAD

A.PIANO 2



43

DRUMS

FRETLESS

CALLIOPE

WARM PAD

A.PIANO 2

44

DRUMS

FRETLESS

CALLIOPE

WARM PAD

A.PIANO 2

Detailed description: This system of musical notation covers measures 44 and 45. It features five staves. The DRUMS staff uses a drum set icon and contains rhythmic notation with 'x' marks for cymbals and stems for other drums. The FRETLESS staff is in bass clef with eighth and quarter notes. The CALLIOPE staff is in treble clef with a whole note chord. The WARM PAD staff is in treble clef with a sustained chord. The A.PIANO 2 staff is in treble clef with a sustained chord. A double bar line is present at the end of measure 45.



45

DRUMS

FRETLESS

CALLIOPE

WARM PAD

STRINGS

A.PIANO 2

Detailed description: This system of musical notation covers measures 45 and 46. It features six staves. The DRUMS staff continues with rhythmic notation. The FRETLESS staff continues with eighth and quarter notes. The CALLIOPE staff continues with a whole note chord. The WARM PAD staff continues with a sustained chord. The STRINGS staff is in bass clef with a whole note chord. The A.PIANO 2 staff continues with a sustained chord. A double bar line is present at the end of measure 46.

46

DRUMS

FRETLESS

CALLIOPE

WARM PAD

STRINGS

A.PIANO 2



47

DRUMS

FRETLESS

CALLIOPE

WARM PAD

STRINGS

A.PIANO 2



48

DRUMS

FRETLESS

CALLIOPE

WARM PAD

STRINGS

A.PIANO 2



49

DRUMS

STEEL GTR

FRETLESS

CALLIOPE

WARM PAD

STRINGS

A.PIANO 2

18

50

DRUMS

STEEL GTR

FRETLESS



51

DRUMS

STEEL GTR

FRETLESS



52

DRUMS

STEEL GTR

FRETLESS



53

DRUMS

STEEL GTR

FRETLESS

54

DRUMS

STEEL GTR

FRETLESS



55

DRUMS

STEEL GTR

FRETLESS



56

DRUMS

STEEL GTR

FRETLESS

57

DRUMS

STEEL GTR

FRETLESS

WARM PAD

STRINGS



58

DRUMS

STEEL GTR

FRETLESS

WARM PAD

STRINGS

59

DRUMS

STEEL GTR

FRETLESS

WARM PAD

STRINGS



60

DRUMS

STEEL GTR

FRETLESS

WARM PAD

STRINGS

61

DRUMS

STEEL GTR

FRETLESS

WARM PAD

STRINGS



62

DRUMS

STEEL GTR

FRETLESS

WARM PAD

STRINGS

63

DRUMS

STEEL GTR

FRETLESS

WARM PAD

STRINGS

Detailed description: This block contains the musical notation for measures 63 and 64. It features five staves: DRUMS (top), STEEL GTR (treble clef), FRETLESS (bass clef), WARM PAD (treble clef), and STRINGS (bass clef). The drums play a consistent pattern of eighth notes with 'x' marks above them. The steel guitar plays a melodic line with various articulations. The fretless guitar plays a simple bass line. The warm pad provides a sustained harmonic background. The strings play a rhythmic accompaniment of eighth notes.



64

DRUMS

STEEL GTR

FRETLESS

WARM PAD

STRINGS

Detailed description: This block contains the musical notation for measures 64 and 65. It features five staves: DRUMS (top), STEEL GTR (treble clef), FRETLESS (bass clef), WARM PAD (treble clef), and STRINGS (bass clef). The drums continue with their pattern. The steel guitar and fretless guitar parts continue their respective lines. The warm pad and strings parts also continue, with the warm pad showing a slight change in articulation in measure 65.

65

DRUMS

STEEL GTR

FRETLESS

WARM PAD

STRINGS

Detailed description: This system of musical notation covers measures 65 and 66. The DRUMS part features a complex rhythmic pattern with various note values and rests. The STEEL GTR part has a melodic line with slurs and accents. The FRETLESS part provides a bass line with some rests. The WARM PAD part consists of sustained chords in the treble clef. The STRINGS part shows a series of sustained notes in the bass clef.



66

DRUMS

STEEL GTR

FRETLESS

WARM PAD

STRINGS

Detailed description: This system of musical notation covers measures 66 and 67. The DRUMS part continues with a rhythmic pattern. The STEEL GTR part has a melodic line with slurs and accents. The FRETLESS part provides a bass line with some rests. The WARM PAD part consists of sustained chords in the treble clef. The STRINGS part shows a series of sustained notes in the bass clef.



67

DRUMS

STEEL GTR

FRETLESS

WARM PAD

STRINGS



68

DRUMS

STEEL GTR

FRETLESS

WARM PAD



69

DRUMS

STEEL GTR

FRETLESS

WARM PAD

26

70

DRUMS

STEEL GTR

FRETLESS

WARM PAD



71

DRUMS

FRETLESS

WARM PAD



72

DRUMS

FRETLESS

WARM PAD

73

DRUMS

FRETLESS

WARM PAD



74

DRUMS

FRETLESS

CALLIOPE

WARM PAD

A.PIANO 2



75

DRUMS

FRETLESS

CALLIOPE

WARM PAD

A.PIANO 2

76

DRUMS

FRETLESS

CALLIOPE

WARM PAD

A.PIANO 2



78

DRUMS

FRETLESS

CALLIOPE

WARM PAD

A.PIANO 2

79

DRUMS

FRETLESS

CALLIOPE

WARM PAD

A.PIANO 2



80

DRUMS

FRETLESS

CALLIOPE

WARM PAD

A.PIANO 2

81

DRUMS

FRETLESS

CALLIOPE

WARM PAD

A.PIANO 2



82

DRUMS

FRETLESS

CALLIOPE

WARM PAD

A.PIANO 2

83

DRUMS

FRETLESS

CALLIOPE

WARM PAD

A.PIANO 2



84

DRUMS

FRETLESS

CALLIOPE

WARM PAD

A.PIANO 2

85

DRUMS

FRETLESS

CALLIOPE

WARM PAD

STRINGS

A.PIANO 2

Detailed description: This system contains measures 85 and 86. The DRUMS staff features a complex rhythmic pattern with various note values and rests. The FRETLESS staff has a melodic line with some rests. The CALLIOPE staff shows a sustained chord with a tremolo effect. The WARM PAD staff has a long, sustained chord with a tremolo effect. The STRINGS staff has a sustained chord with a tremolo effect. The A.PIANO 2 staff has a sustained chord with a tremolo effect.



86

DRUMS

FRETLESS

CALLIOPE

WARM PAD

STRINGS

A.PIANO 2

Detailed description: This system contains measures 86 and 87. The DRUMS staff continues the rhythmic pattern from the previous system. The FRETLESS staff has a melodic line with some rests. The CALLIOPE staff shows a sustained chord with a tremolo effect. The WARM PAD staff has a long, sustained chord with a tremolo effect. The STRINGS staff has a sustained chord with a tremolo effect. The A.PIANO 2 staff has a sustained chord with a tremolo effect.



87

DRUMS

FRETLESS

CALLIOPE

WARM PAD

STRINGS

A.PIANO 2



88

DRUMS

FRETLESS

CALLIOPE

WARM PAD

STRINGS

A.PIANO 2

The image displays a musical score for seven instruments, arranged vertically. Each instrument has a staff with its name on the left. The instruments and their parts are: DRUMS (top staff, featuring a large oval graphic), STEEL GTR (second staff, treble clef), FRETLESS (third staff, bass clef), CALLIOPE (fourth staff, treble clef), WARM PAD (fifth staff, treble clef), STRINGS (sixth staff, bass clef), and A.PIANO 2 (bottom staff, treble clef). The score spans four measures, with various musical notations such as notes, rests, and articulation marks.

# Onbekende Songs & Demo`s - METAPHOR

## DRUMS

♩ = 180,001801

The image displays ten staves of drum notation for the song 'METAPHOR'. Each staff is numbered from 1 to 10. The notation uses a standard drum set layout with a snare drum (S), bass drum (D), and cymbal (C). The notation includes various rhythmic patterns, such as eighth and sixteenth notes, rests, and dynamic markings like accents and slurs. The tempo is indicated as 180,001801. The notation is presented in a clear, black-and-white format, suitable for a music score.

V.S.

DRUMS

21

22

23

25

27

29

31

33

35

37

DRUMS

39

41

43

45

47

49

51

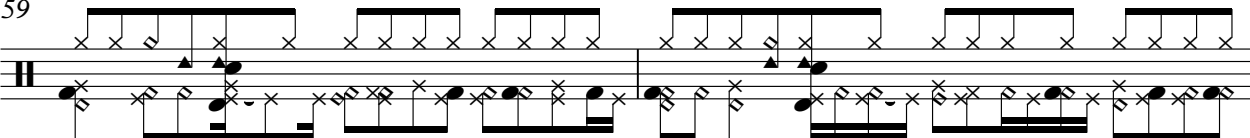
53

55

57

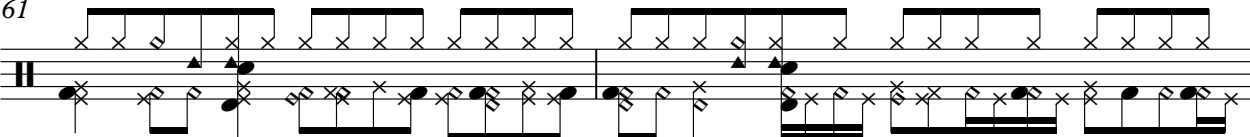
V.S.

59



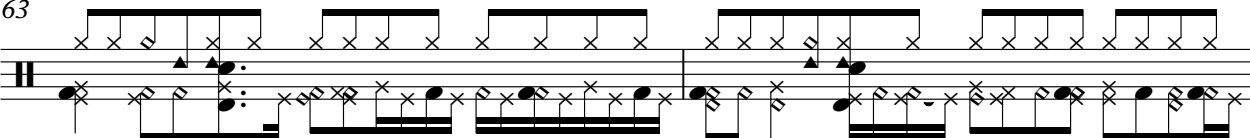
Drum notation for measures 59 and 60. The notation is on a five-line staff with a double bar line on the left. It features a complex rhythmic pattern with various note values, rests, and articulation marks such as accents and slurs. The pattern is consistent across both measures.

61



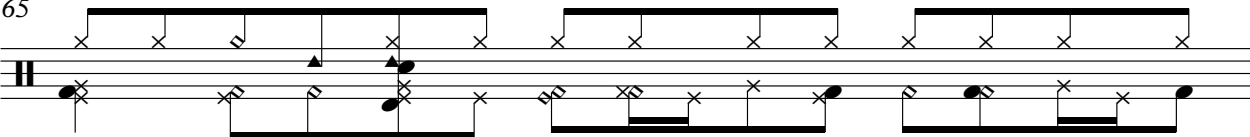
Drum notation for measures 61 and 62. The notation is on a five-line staff with a double bar line on the left. It features a complex rhythmic pattern with various note values, rests, and articulation marks such as accents and slurs. The pattern is consistent across both measures.

63



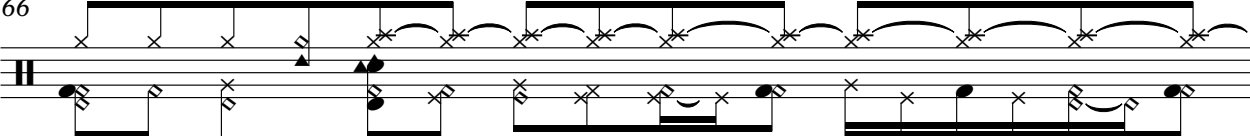
Drum notation for measures 63 and 64. The notation is on a five-line staff with a double bar line on the left. It features a complex rhythmic pattern with various note values, rests, and articulation marks such as accents and slurs. The pattern is consistent across both measures.

65



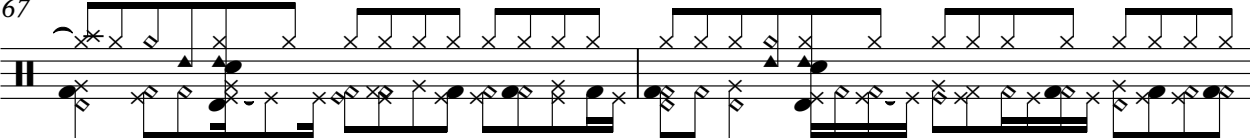
Drum notation for measures 65 and 66. The notation is on a five-line staff with a double bar line on the left. It features a complex rhythmic pattern with various note values, rests, and articulation marks such as accents and slurs. The pattern is consistent across both measures.

66



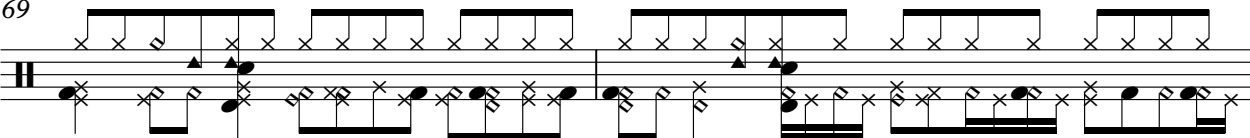
Drum notation for measures 66 and 67. The notation is on a five-line staff with a double bar line on the left. It features a complex rhythmic pattern with various note values, rests, and articulation marks such as accents and slurs. The pattern is consistent across both measures.

67



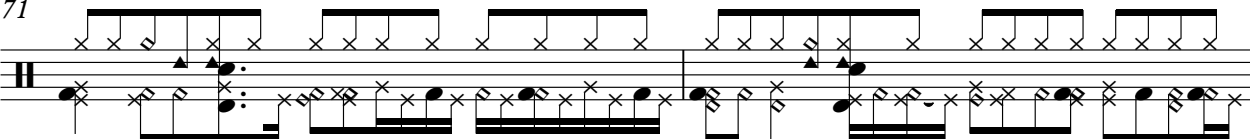
Drum notation for measures 67 and 68. The notation is on a five-line staff with a double bar line on the left. It features a complex rhythmic pattern with various note values, rests, and articulation marks such as accents and slurs. The pattern is consistent across both measures.

69



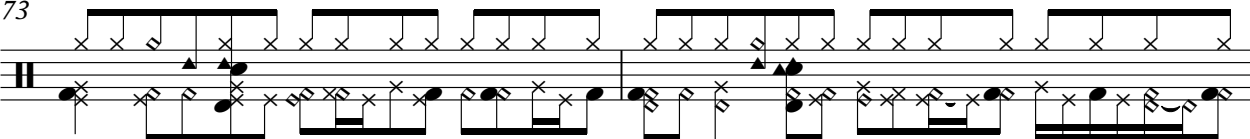
Drum notation for measures 69 and 70. The notation is on a five-line staff with a double bar line on the left. It features a complex rhythmic pattern with various note values, rests, and articulation marks such as accents and slurs. The pattern is consistent across both measures.

71



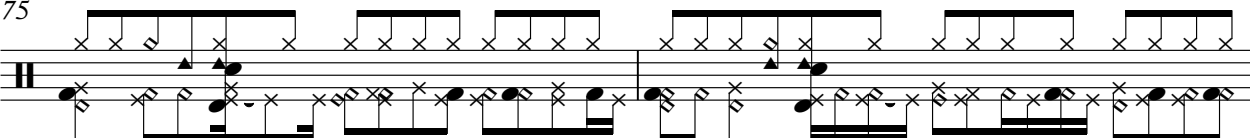
Drum notation for measures 71 and 72. The notation is on a five-line staff with a double bar line on the left. It features a complex rhythmic pattern with various note values, rests, and articulation marks such as accents and slurs. The pattern is consistent across both measures.

73



Drum notation for measures 73 and 74. The notation is on a five-line staff with a double bar line on the left. It features a complex rhythmic pattern with various note values, rests, and articulation marks such as accents and slurs. The pattern is consistent across both measures.

75



Drum notation for measures 75 and 76. The notation is on a five-line staff with a double bar line on the left. It features a complex rhythmic pattern with various note values, rests, and articulation marks such as accents and slurs. The pattern is consistent across both measures.

DRUMS

77

79

81

83

85

87

88

STEEL GTR

Onbekende Songs & Demo`s - METAPHOR

♩ = 180,001801

4

7

8

9

11

13

15

16

17

19

V.S.



21

23

24

25

27

22

50

52

53

55

57

59



60



61



63



65



67



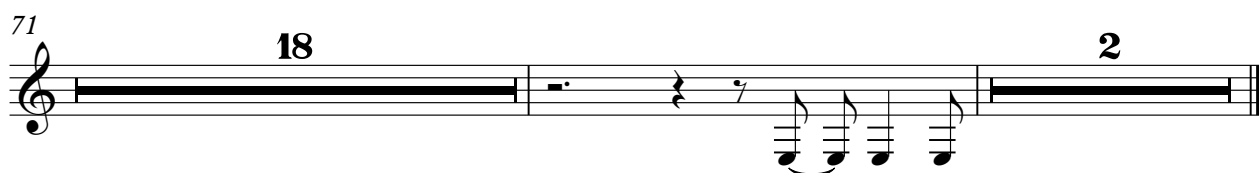
68



69



71



FRETLESS

Onbekende Songs & Demo`s - METAPHOR

♩ = 180,001801

4

7

10

13

16

19

22

25

28

V.S.

31



34



37



40



42



44



47



50



53



56







CALLIOPE

Onbekende Songs & Demo`s - METAPHOR

♩ = 180,001801

29

34

40

46

50

24

78

84

88

2

Onbekende Songs & Demo`s - METAPHOR

WARM PAD

♩ = 180,001801

12

15

19

24

28

33

38

42

46

49

7



WARM PAD

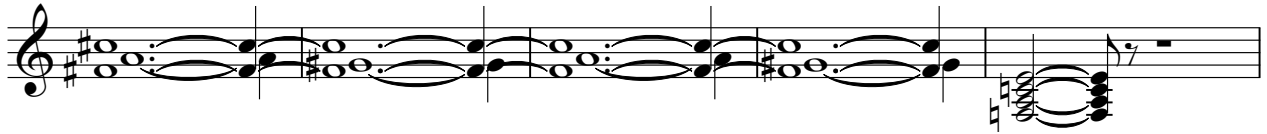
57



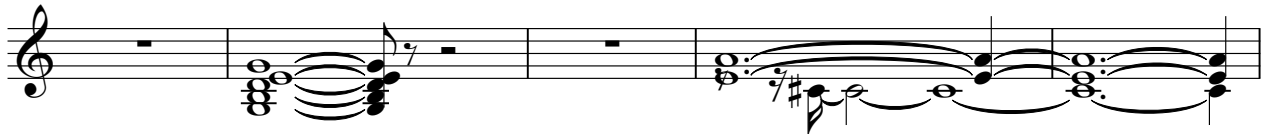
61



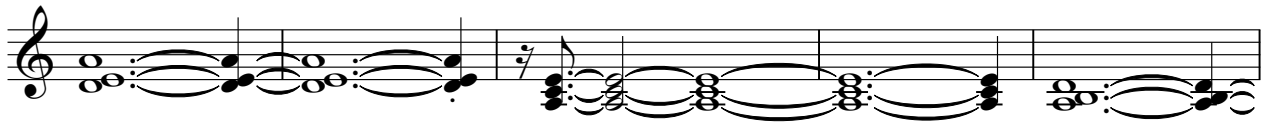
66



71



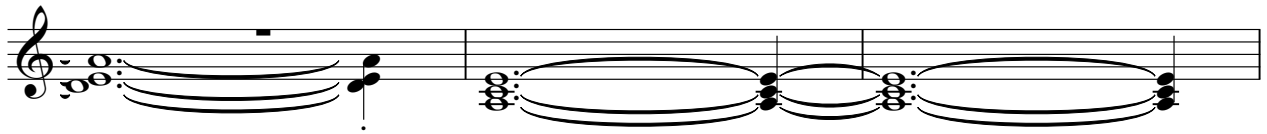
76



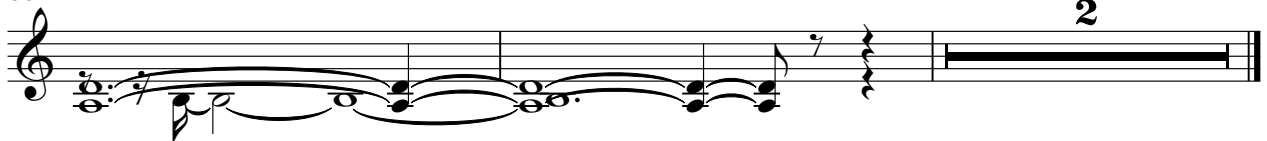
81



85



88



STRINGS

Onbekende Songs & Demo`s - METAPHOR

♩ = 180,001801

44

Musical notation for strings, measures 44-47. Measure 44 is a whole rest. Measures 45-47 contain notes with slurs and accents.

48

35

Musical notation for strings, measures 48-51. Measure 48 has notes with slurs and accents. Measure 49 has notes with slurs and accents. Measure 50 is a whole rest. Measure 51 has notes with slurs and accents.

86

2

Musical notation for strings, measures 86-89. Measure 86 has notes with slurs and accents. Measure 87 has notes with slurs and accents. Measure 88 has notes with slurs and accents. Measure 89 is a whole rest.

STRINGS

Onbekende Songs & Demo`s - METAPHOR

♩ = 180,001801

56

Musical staff 56, starting with a treble clef and a 7/4 time signature. The staff contains a whole rest, followed by a quarter rest, a quarter note with a sharp sign, a dotted quarter note, and a quarter rest.

60

Musical staff 60, starting with a treble clef and a sharp sign. The staff contains a quarter note with a sharp sign, a quarter rest, a dotted quarter note, a quarter rest, a quarter rest, and a series of eighth notes.

63

Musical staff 63, starting with a treble clef. The staff contains a series of eighth notes.

65

Musical staff 65, starting with a treble clef. The staff contains a series of eighth notes, a quarter note with a sharp sign, a quarter rest, and a whole rest. The number 25 is written below the staff.

♩ = 180,001801

**33**

37

41

46

50

**24**

78

82

87

**2**