

Onbekende Songs & Demo`s - No Rain

♩ = 149,001694

DRUMS

JAZZ GTR

+12STR GTR

DISTORTION

DISTORTION

NYLON GTR

FINGERDBAS

CHOIR AAHS

♩ = 149,001694

SYNBASS 1

Detailed description: This block contains the first four measures of the musical score. The tempo is marked as ♩ = 149,001694. The time signature is 4/4. The instruments are: DRUMS (drum set), JAZZ GTR (jazz guitar), +12STR GTR (12-string guitar), DISTORTION (two staves), NYLON GTR (nylon guitar), FINGERDBAS (fingered bass), CHOIR AAHS (choir), and SYNBASS 1 (synthesized bass). The notation shows various rests and notes for each instrument.



5

DRUMS

+12STR GTR

NYLON GTR

FINGERDBAS

Detailed description: This block contains measures 5 through 8 of the musical score. The instruments are: DRUMS, +12STR GTR, NYLON GTR, and FINGERDBAS. The notation shows complex rhythmic patterns and chordal structures for these instruments.

DRUMS

+12STR GTR

NYLON GTR

FINGERDBAS

SYNBRASS 1



DRUMS

+12STR GTR

NYLON GTR

FINGERDBAS

SYNBRASS 1

14

DRUMS

+12STR GTR

NYLON GTR

FINGERDBAS

SYNBASS 1



17

+12STR GTR

NYLON GTR

FINGERDBAS

SYNBASS 1



20

+12STR GTR

NYLON GTR

FINGERDBAS

SYNBASS 1

23

+12STR GTR

NYLON GTR

FINGERDBAS

CHOIR AAHS

SYNBRASS 1



26

+12STR GTR

NYLON GTR

FINGERDBAS

CHOIR AAHS

SYNBRASS 1

29

+12STR GTR

NYLON GTR

FINGERDBAS

CHOIR AAHS

SYNBRASS 1



33

+12STR GTR

NYLON GTR

FINGERDBAS

SYNBRASS 1

36

+12STR GTR

NYLON GTR

FINGERDBAS

SYNBASS 1



39

JAZZ GTR

+12STR GTR

NYLON GTR

FINGERDBAS

CHOIR AAHS

SYNBASS 1

42

+12STR GTR

NYLON GTR

FINGERDBAS

CHOIR AAHS

SYNBASS 1



45

+12STR GTR

NYLON GTR

FINGERDBAS

SYNBASS 1

48

+12STR GTR

NYLON GTR

FINGERDBAS

CHOIR AAHS

SYNBASS 1



51

+12STR GTR

NYLON GTR

FINGERDBAS

CHOIR AAHS

SYNBASS 1

54

+12STR GTR

NYLON GTR

FINGERDBAS

CHOIR AAHS

SYNBASS 1



57

+12STR GTR

NYLON GTR

FINGERDBAS

CHOIR AAHS

SYNBASS 1

60

+12STR GTR

NYLON GTR

FINGERDBAS

CHOIR AAHS

SYNBASS 1



63

+12STR GTR

NYLON GTR

FINGERDBAS

CHOIR AAHS

SYNBASS 1

67

DRUMS

+12STR GTR

NYLON GTR

FINGERDBAS

CHOIR AAHS

SYNBRASS 1



71

DRUMS

+12STR GTR

DISTORTION

NYLON GTR

FINGERDBAS

74

DRUMS

+12STR GTR

DISTORTION

NYLON GTR

FINGERDBAS



76

DRUMS

+12STR GTR

DISTORTION

NYLON GTR

FINGERDBAS

78

DRUMS

+12STR GTR

DISTORTION

NYLON GTR

FINGERDBAS

6 6 6 3 3



80

DRUMS

+12STR GTR

DISTORTION

FINGERDBAS

6 3 3



83

DRUMS

+12STR GTR

DISTORTION

DISTORTION

FINGERDBAS

3 6 6

86

DRUMS

+12STR GTR

DISTORTION

NYLON GTR

FINGERDBAS

SYNBRASS 1



89

+12STR GTR

DISTORTION

NYLON GTR

FINGERDBAS

SYNBRASS 1

93

This musical system covers measures 93 to 97. It features five staves: +12STR GTR, NYLON GTR, FINGERDBAS, CHOIR AAHS, and SYNBRASS 1. The +12STR GTR part consists of sustained chords with a sharp sign. The NYLON GTR part has a melodic line with some slurs. The FINGERDBAS part has a bass line with a few notes and slurs. The CHOIR AAHS part has a vocal line with some notes and slurs. The SYNBRASS 1 part has a brass line with some notes and slurs.



98

This musical system covers measures 98 to 102. It features six staves: DRUMS, +12STR GTR, NYLON GTR, FINGERDBAS, CHOIR AAHS, and SYNBRASS 1. The DRUMS part has a complex rhythmic pattern with many notes and rests. The +12STR GTR part has a complex chordal texture with many notes and rests. The NYLON GTR part has a melodic line with many notes and rests. The FINGERDBAS part has a bass line with many notes and rests. The CHOIR AAHS part has a vocal line with a triplet of notes. The SYNBRASS 1 part has a brass line with many notes and rests.

101

DRUMS

+12STR GTR

NYLON GTR

FINGERDBAS

SYNBRASS 1



104

DRUMS

+12STR GTR

NYLON GTR

FINGERDBAS

SYNBRASS 1

106

DRUMS

JAZZ GTR

+12STR GTR

NYLON GTR

FINGERDBAS

CHOIR AAHS

SYNBASS 1



108

DRUMS

+12STR GTR

NYLON GTR

FINGERDBAS

CHOIR AAHS

SYNBASS 1

111

DRUMS

+12STR GTR

NYLON GTR

FINGERDBAS

CHOIR AAHS

SYNBRASS 1

Detailed description: This system of music covers measures 111, 112, and 113. The drums part features a consistent pattern of eighth notes with asterisks, indicating a specific drum sound. The +12 string guitar part consists of a dense, rhythmic chordal texture. The nylon guitar part has a melodic line with some rests. The fingered bass part provides a steady bass line. The choir and synthesizer brass parts have sparse, melodic entries.



114

DRUMS

+12STR GTR

NYLON GTR

FINGERDBAS

CHOIR AAHS

SYNBRASS 1

Detailed description: This system of music covers measures 114, 115, and 116. The drums part continues with the same eighth-note pattern. The +12 string guitar part maintains its dense chordal texture. The nylon guitar part continues its melodic line. The fingered bass part continues its bass line. The choir and synthesizer brass parts have more active melodic lines.

117

DRUMS

+12STR GTR

DISTORTION

NYLON GTR

FINGERDBAS

CHOIR AAHS

SYNBASS 1



119

DRUMS

+12STR GTR

DISTORTION

NYLON GTR

FINGERDBAS

CHOIR AAHS

SYNBASS 1

121

DRUMS

+12STR GTR

DISTORTION

NYLON GTR

FINGERDBAS

CHOIR AAHS

SYNBASS 1



123

DRUMS

+12STR GTR

NYLON GTR

FINGERDBAS

CHOIR AAHS

SYNBASS 1

125

DRUMS

+12STR GTR

NYLON GTR

FINGERDBAS

CHOIR AAHS

SYNBRASS 1



128

DRUMS

+12STR GTR

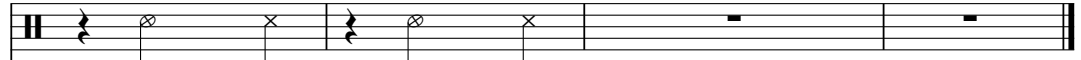
NYLON GTR

FINGERDBAS

CHOIR AAHS

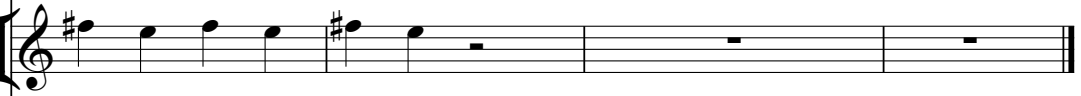
SYNBRASS 1

DRUMS



Drum notation for measures 131-134. Measure 131: Snare drum (x), Hi-hat (o), Bass drum (x). Measure 132: Snare drum (x), Hi-hat (o), Bass drum (x). Measure 133: Rest. Measure 134: Rest.

NYLON GTR



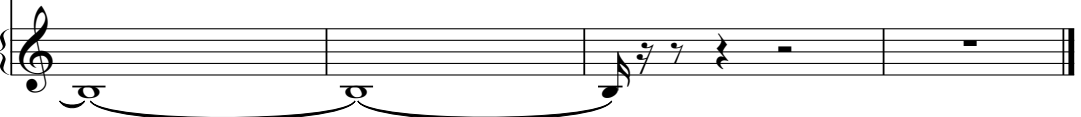
Nylon guitar notation for measures 131-134. Measure 131: Quarter notes G4, A4, B4. Measure 132: Quarter notes G4, A4, B4. Measure 133: Rest. Measure 134: Rest.

CHOIR AAHS



Choir AAHS notation for measures 131-134. All measures (131-134) contain a whole rest.

SYNBASS 1



Synbass 1 notation for measures 131-134. Measure 131: Bass note G2. Measure 132: Bass note G2. Measure 133: Bass note G2. Measure 134: Rest. A brace spans measures 131 and 132.

DRUMS

Onbekende Songs & Demo`s - No Rain

♩ = 149,001694

2

8

14

55

72

76

80

84

86

10

DRUMS

98

102

106

110

114

118

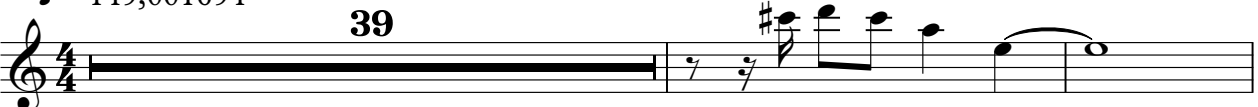
122

127

131

♩ = 149,001694

39



Musical notation for guitar, measure 39. It starts with a whole rest, followed by a quarter rest, a quarter note with a sharp sign, and a half note with a slur over it.

42

64

27



Musical notation for guitar, measures 42-44. Measure 42 is a whole rest. Measure 43 contains a quarter rest, a quarter note with a sharp sign, and a half note with a slur over it. Measure 44 is a whole rest.

Onbekende Songs & Demo`s - No Rain

+12STR GTR

♩ = 149,001694

2

8

12

16

20

24

28

32

36

40

V.S.

44

48

52

56

60

64

71

75

79

83

87

95

101

105

109

113

117

121

125

128

DISTORTION

Onbekende Songs & Demo`s - No Rain

♩ = 149,001694

72

75

78

81

85

90

119

121

12

DISTORTION

Onbekende Songs & Demo`s - No Rain

♩ = 149,001694

82

51

♩ = 149,001694

7

11

15

21 **3**

30

35

39 **3**

43

46

Detailed description: The image shows a musical score for a nylon guitar. It consists of ten staves of music, each starting with a measure number. The time signature is 4/4. The tempo is indicated as ♩ = 149,001694. The music features a variety of rhythmic patterns, including eighth and sixteenth notes, often beamed together. There are several accidentals, including sharps and naturals. A triplet of eighth notes is marked with a '3' above the staff at measure 21, and another triplet of eighth notes is marked with a '3' below the staff at measure 39. The score ends with a final measure on the tenth staff.

110

114

118

121

124

129

♩ = 149,001694

2

9

13

20

26

31

36

40

44

48

V.S.

♩ = 149,001694

22 3

29 3 8

41 4

49

54

59

64

70 3 24

98 3 8

108 2

53



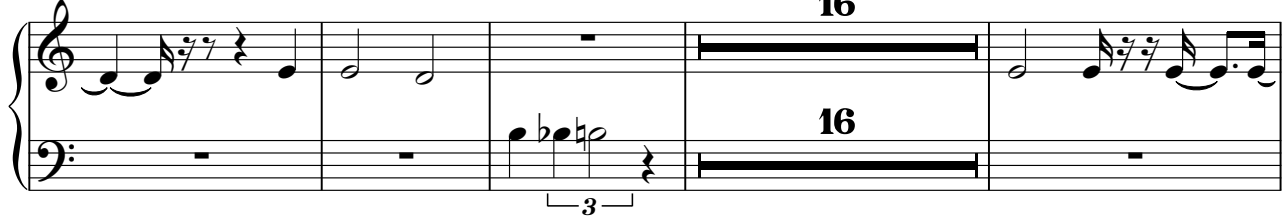
58



63



68



88



93



99



103



108



113

Musical notation for measure 113, featuring a treble clef and a series of eighth and quarter notes with a triplet of eighth notes at the end.

119

Musical notation for measure 119, featuring a treble clef and a series of eighth and quarter notes with a triplet of eighth notes at the beginning.

123

Musical notation for measure 123, featuring a grand staff with treble and bass clefs, showing a melodic line in the treble and a bass line with a triplet of eighth notes.

129

Musical notation for measure 129, featuring a treble clef and a series of eighth and quarter notes with a triplet of eighth notes at the end.