

Onbekende Songs & Demo`s - Tin Man

♩ = 88,001053

DRUMS

SLAPBASS 1

A.PIANO 1

4

DRUMS

SLAPBASS 1

6

DRUMS

SLAPBASS 1

8

DRUMS

SLAPBASS 1

10

DRUMS

SLAPBASS 1

This system shows measures 10 and 11. The Drums part features a consistent pattern of eighth notes with 'x' marks above them, indicating a specific drum sound. The Slap Bass 1 part consists of eighth notes with slurs and a sharp sign (#) above the notes in measures 10 and 11.

12

DRUMS

SLAPBASS 1

This system shows measures 12 and 13. The Drums part continues with the same eighth-note pattern with 'x' marks. The Slap Bass 1 part continues with eighth notes, including a sharp sign (#) above the notes in measure 12.

14

DRUMS

SLAPBASS 1

This system shows measures 14 and 15. The Drums part continues with the eighth-note pattern with 'x' marks. The Slap Bass 1 part continues with eighth notes, including a sharp sign (#) above the notes in measure 14.

16

DRUMS

SLAPBASS 1

This system shows measures 16 and 17. The Drums part features a more complex pattern with eighth notes and 'x' marks, including a double bar line in measure 16. The Slap Bass 1 part continues with eighth notes, including a sharp sign (#) above the notes in measure 16.

18

DRUMS

SLAPBASS 1

This system shows measures 18 and 19. The Drums part continues with the eighth-note pattern with 'x' marks, including a double bar line in measure 18. The Slap Bass 1 part continues with eighth notes, including a sharp sign (#) above the notes in measure 18.

20

DRUMS

SLAPBASS 1

22

DRUMS

SLAPBASS 1

24

DRUMS

SLAPBASS 1

26

DRUMS

OVERDRIVE

SLAPBASS 1

28

DRUMS

OVERDRIVE

SLAPBASS 1

30

DRUMS

OVERDRIVE

SLAPBASS 1

32

DRUMS

OVERDRIVE

SLAPBASS 1

34

DRUMS

SLAPBASS 1

36

DRUMS

SLAPBASS 1

38

DRUMS

SLAPBASS 1

40

DRUMS

SLAPBASS 1

42

DRUMS

SLAPBASS 1

44

DRUMS

OVERDRIVE

SLAPBASS 1

A.PIANO 1

46

DRUMS

OVERDRIVE

SLAPBASS 1

A.PIANO 1

48

DRUMS

OVERDRIVE

SLAPBASS 1

A.PIANO 1

50

DRUMS

OVERDRIVE

SLAPBASS 1

A.PIANO 1

52

DRUMS

SLAPBASS 1

54

DRUMS

SLAPBASS 1

56

DRUMS

SLAPBASS 1

58

DRUMS

SLAPBASS 1

60

DRUMS

SLAPBASS 1

62

DRUMS

OVERDRIVE

SLAPBASS 1

A.PIANO 1

64

DRUMS

OVERDRIVE

SLAPBASS 1

A.PIANO 1

66

DRUMS

OVERDRIVE

SLAPBASS 1

CHOIR AAHS

A.PIANO 1

68

DRUMS

OVERDRIVE

SLAPBASS 1

CHOIR AAHS

A.PIANO 1

70

DRUMS

OVERDRIVE

SLAPBASS 1

CHOIR AAHS

A.PIANO 1

72

DRUMS

OVERDRIVE

SLAPBASS 1

CHOIR AAHS

A.PIANO 1

74

DRUMS

OVERDRIVE

SLAPBASS 1

CHOIR AAHS

A.PIANO 1

76

DRUMS

OVERDRIVE

SLAPBASS 1

CHOIR AAHS

A.PIANO 1

78

DRUMS

OVERDRIVE

SLAPBASS 1

CHOIR AAHS

A.PIANO 1

84


DRUMS

92

DRUMS

100

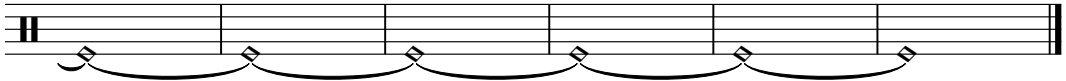
DRUMS



A musical staff for drums, labeled 'DRUMS' on the left. Above the staff is the number '100'. The staff contains a double bar line at the beginning, followed by six measures. Each measure contains a single vertical bar on the first line of the staff. Below the staff, there are six curved lines, each starting with a diamond-shaped symbol and ending with a hook-like symbol, connecting the vertical bars in the staff.

106

DRUMS



A musical staff for drums, labeled 'DRUMS' on the left. Above the staff is the number '106'. The staff contains a double bar line at the beginning, followed by six measures. Each measure contains a single vertical bar on the first line of the staff. Below the staff, there are six curved lines, each starting with a diamond-shaped symbol and ending with a hook-like symbol, connecting the vertical bars in the staff.

Onbekende Songs & Demo`s - Tin Man

DRUMS

♩ = 88,001053

2

Drum notation for measure 2, starting with a 4/4 time signature. The notation shows a series of rhythmic patterns using 'x' for cymbals and solid dots for drums.

5

Drum notation for measure 5, continuing the rhythmic patterns.

7

Drum notation for measure 7, continuing the rhythmic patterns.

9

Drum notation for measure 9, continuing the rhythmic patterns.

11

Drum notation for measure 11, continuing the rhythmic patterns.

13

Drum notation for measure 13, continuing the rhythmic patterns.

15

Drum notation for measure 15, continuing the rhythmic patterns.

17

Drum notation for measure 17, continuing the rhythmic patterns.

19

Drum notation for measure 19, continuing the rhythmic patterns.

21

Drum notation for measure 21, continuing the rhythmic patterns.

V.S.

DRUMS

Drum notation for measures 23 through 41. The notation is presented in two staves per measure: the top staff uses 'x' marks to indicate drum hits, and the bottom staff uses standard musical notation (quarter notes, eighth notes, and rests) to indicate the rhythm. Measures 23-30 feature a consistent pattern of eighth notes in the bottom staff and 'x' marks in the top staff. Measures 31-36 show a change in the bottom staff rhythm to a more complex pattern of eighth and sixteenth notes. Measures 37-40 continue this complex pattern. Measure 41 returns to the simpler eighth-note pattern seen in the earlier measures.

DRUMS

43

45

47

49

51

53

55

57

59

61

V.S.

DRUMS

63

65

67

69

71

73

75

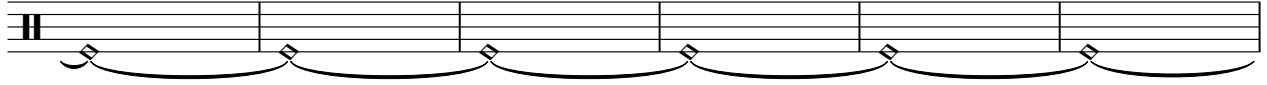
77

83

92

DRUMS

101



107



OVERDRIVE

Onbekende Songs & Demo`s - Tin Man

♩ = 88,001053

25

32

10

49

10

66

74

33

32



35



38



41



44



47



50



53



56



59



62



65



68



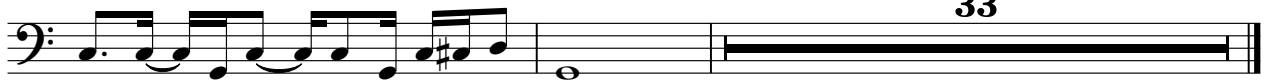
71



74



77



33

♩ = 88,001053 **65**

68

71

74

77 **33**

Onbekende Songs & Demo`s - Tin Man

A.PIANO 1

♩ = 88,001053

40

44

47

50

10

62

65

68

71

74

77

32