

# Sir Douglas Quintet - Mendocino 1

♩ = 120,000000

DRUMS

DISTORTION

FINGERDBAS

ELEC ORGAN

REED ORGAN

BRASS

MELODY

♩ = 120,000000



4

DRUMS

DISTORTION

FINGERDBAS

BRASS

6

DRUMS

DISTORTION

FINGERDBAS

BRASS



8

DRUMS

DISTORTION

FINGERDBAS

REED ORGAN

BRASS

MELODY

9

DRUMS

DISTORTION

FINGERDBAS

ELEC ORGAN

REED ORGAN

MELODY



10

DRUMS

DISTORTION

FINGERDBAS

REED ORGAN

MELODY

11

DRUMS

DISTORTION

FINGERDBAS

ELEC ORGAN

REED ORGAN

MELODY



12

DRUMS

DISTORTION

FINGERDBAS

ELEC ORGAN

REED ORGAN

MELODY

13

DRUMS

DISTORTION

FINGERDBAS

REED ORGAN

MELODY



14

DRUMS

DISTORTION

FINGERDBAS

ELEC ORGAN

REED ORGAN

MELODY

15

DRUMS

DISTORTION

FINGERDBAS

ELEC ORGAN

REED ORGAN

MELODY



16

DRUMS

DISTORTION

FINGERDBAS

REED ORGAN

MELODY

17

DRUMS

DISTORTION

FINGERDBAS

REED ORGAN

MELODY



18

DRUMS

DISTORTION

FINGERDBAS

REED ORGAN

MELODY

19

DRUMS

DISTORTION

FINGERDBAS

REED ORGAN

MELODY



20

DRUMS

DISTORTION

FINGERDBAS

ELEC ORGAN

REED ORGAN

MELODY



21

DRUMS

DISTORTION

FINGERDBAS

ELEC ORGAN

REED ORGAN

MELODY



22

DRUMS

DISTORTION

FINGERDBAS

REED ORGAN

MELODY

23

DRUMS

DISTORTION

FINGERDBAS

REED ORGAN

MELODY



24

DRUMS

DISTORTION

FINGERDBAS

REED ORGAN

MELODY

25

DRUMS

DISTORTION

FINGERDBAS

REED ORGAN

MELODY

Detailed description: This block contains the musical notation for measures 25 through 28. It features five staves: Drums (top), Distortion (TAB), Fingerdbas, Reed Organ, and Melody (bottom). The Drums staff shows a complex rhythmic pattern with various note values and rests. The Distortion (TAB) staff shows a sequence of chords, each with a '3' above it, indicating triplets. The Fingerdbas staff shows a bass line with notes and rests. The Reed Organ staff shows a rhythmic pattern of chords with eighth notes. The Melody staff shows a single line of music with notes and rests.



26

DRUMS

DISTORTION

FINGERDBAS

ELEC ORGAN

REED ORGAN

MELODY

Detailed description: This block contains the musical notation for measures 26 through 29. It features six staves: Drums (top), Distortion (TAB), Fingerdbas, Elec Organ, Reed Organ, and Melody (bottom). The Drums staff shows a complex rhythmic pattern. The Distortion (TAB) staff shows a sequence of chords, each with a '3' above it. The Fingerdbas staff shows a bass line. The Elec Organ staff shows a sequence of chords with notes and rests. The Reed Organ staff shows a rhythmic pattern of chords. The Melody staff shows a single line of music with notes and rests.

27

DRUMS

DISTORTION

FINGERDBAS

ELEC ORGAN

REED ORGAN

MELODY



28

DRUMS

DISTORTION

FINGERDBAS

REED ORGAN

MELODY

29

DRUMS

DISTORTION

FINGERDBAS

REED ORGAN

MELODY



30

DRUMS

DISTORTION

FINGERDBAS

REED ORGAN

MELODY

31

DRUMS

DISTORTION

FINGERDBAS

REED ORGAN

MELODY

Detailed description: This system contains measures 31 through 38. The Drums staff shows a consistent pattern of snare and bass drum hits. The Distortion staff features a guitar tab with a triplet of eighth notes on the 3rd string for each measure. The Fingerdbas staff has a bass line with a half note in the first measure, followed by quarter notes. The Reed Organ staff plays a rhythmic accompaniment of eighth notes. The Melody staff has a single note in the first measure, followed by a half note and a quarter note.



32

DRUMS

DISTORTION

FINGERDBAS

ELEC ORGAN

REED ORGAN

MELODY

Detailed description: This system contains measures 39 through 46. The Drums staff continues the snare and bass drum pattern. The Distortion staff has a guitar tab with a triplet of eighth notes on the 3rd string and a 6 on the 6th string for each measure. The Fingerdbas staff has a bass line with a half note in the first measure, followed by quarter notes. The Elec Organ staff has a melodic line with a half note in the first measure, followed by quarter notes. The Reed Organ staff plays a rhythmic accompaniment of eighth notes. The Melody staff has a single note in the first measure, followed by a half note and a quarter note.

33

DRUMS

DISTORTION

FINGERDBAS

ELEC ORGAN

REED ORGAN



34

DRUMS

DISTORTION

FINGERDBAS

REED ORGAN

MELODY

35

DRUMS

DISTORTION

FINGERDBAS

REED ORGAN

MELODY



36

DRUMS

DISTORTION

FINGERDBAS

REED ORGAN

MELODY



37

DRUMS

DISTORTION

FINGERDBAS

REED ORGAN

MELODY

Detailed description: This block contains the musical notation for measures 37 through 40. It features five staves. The DRUMS staff shows a consistent pattern of eighth notes with 'x' marks above them, indicating muted notes. The DISTORTION TAB staff shows a sequence of chords: 3 8 6, 3 8 6, 3 8 6, 3 8 6, 3 8 6, 3 8 6, 3 8 6, and 3 8 6. The FINGERDBAS staff shows a bass line with notes G2, F2, E2, D2, C2, B1, A1, and G1. The REED ORGAN staff plays a rhythmic pattern of eighth notes in a B-flat major key. The MELODY staff shows a single note G1 followed by a half-note chord of G1 and F1.



38

DRUMS

DISTORTION

FINGERDBAS

ELEC ORGAN

REED ORGAN

MELODY

Detailed description: This block contains the musical notation for measures 38 through 41. It features six staves. The DRUMS staff continues the pattern of eighth notes with 'x' marks. The DISTORTION TAB staff shows a sequence of chords: 3 8 6, 3 8 6, 3 8 6, 3 8 6, 3 8 6, 3 8 6, 3 8 6, and 3 8 6. The FINGERDBAS staff shows a bass line with notes G2, F2, E2, D2, C2, B1, A1, and G1. The ELEC ORGAN staff plays a melodic line with notes G1, F1, E1, D1, and C1. The REED ORGAN staff continues its rhythmic pattern of eighth notes. The MELODY staff shows a single note G1 followed by a half-note chord of G1 and F1.

39

DRUMS

DISTORTION

FINGERDBAS

ELEC ORGAN

REED ORGAN



40

DRUMS

DISTORTION

FINGERDBAS

REED ORGAN

MELODY

41

DRUMS

DISTORTION

FINGERDBAS

REED ORGAN

MELODY



42

DRUMS

DISTORTION

FINGERDBAS

REED ORGAN

MELODY

43

DRUMS

DISTORTION

FINGERDBAS

REED ORGAN

MELODY



44

DRUMS

DISTORTION

FINGERDBAS

ELEC ORGAN

REED ORGAN

MELODY

45

DRUMS

DISTORTION

FINGERDBAS

ELEC ORGAN

REED ORGAN



46

DRUMS

DISTORTION

FINGERDBAS

ELEC ORGAN

REED ORGAN

47

DRUMS

DISTORTION

FINGERDBAS

ELEC ORGAN

REED ORGAN



48

DRUMS

DISTORTION

FINGERDBAS

ELEC ORGAN

REED ORGAN

49

DRUMS

DISTORTION

FINGERDBAS

ELEC ORGAN

REED ORGAN



50

DRUMS

DISTORTION

FINGERDBAS

ELEC ORGAN

REED ORGAN

51

DRUMS

DISTORTION

FINGERDBAS

ELEC ORGAN

REED ORGAN



52

DRUMS

DISTORTION

FINGERDBAS

ELEC ORGAN

REED ORGAN



53

DRUMS

DISTORTION

FINGERDBAS

ELEC ORGAN

REED ORGAN



54

DRUMS

DISTORTION

FINGERDBAS

ELEC ORGAN

REED ORGAN

55

DRUMS

DISTORTION

FINGERDBAS

ELEC ORGAN

REED ORGAN



56

DRUMS

DISTORTION

FINGERDBAS

ELEC ORGAN

REED ORGAN

57

DRUMS

DISTORTION

FINGERDBAS

ELEC ORGAN

REED ORGAN



58

DRUMS

DISTORTION

FINGERDBAS

REED ORGAN

MELODY

59

DRUMS

DISTORTION

FINGERDBAS

ELEC ORGAN

REED ORGAN

MELODY



60

DRUMS

DISTORTION

FINGERDBAS

REED ORGAN

MELODY

61

DRUMS

DISTORTION

FINGERDBAS

ELEC ORGAN

REED ORGAN

MELODY



62

DRUMS

DISTORTION

FINGERDBAS

REED ORGAN

MELODY

63

DRUMS

DISTORTION

FINGERDBAS

REED ORGAN

MELODY



64

DRUMS

DISTORTION

FINGERDBAS

ELEC ORGAN

REED ORGAN

MELODY

65

DRUMS

DISTORTION

FINGERDBAS

ELEC ORGAN

REED ORGAN

MELODY



66

DRUMS

DISTORTION

FINGERDBAS

REED ORGAN

MELODY

67

DRUMS

DISTORTION

FINGERDBAS

REED ORGAN

MELODY



68

DRUMS

DISTORTION

FINGERDBAS

REED ORGAN

MELODY



69

DRUMS

DISTORTION

FINGERDBAS

REED ORGAN

MELODY



70

DRUMS

DISTORTION

FINGERDBAS

ELEC ORGAN

REED ORGAN

BRASS

MELODY

71

DRUMS

DISTORTION

T	3	3	3	3	3	3	3
A	8	8	8	8	8	8	8
B	6	6	6	6	6	6	6
	?	?	?	?	?	?	?

FINGERDBAS

ELEC ORGAN

REED ORGAN

BRASS

MELODY



72

DRUMS

DISTORTION

T	4	4	4	4	4	1	4
A	9	9	9	9	9	6	9
B	7	7	7	7	7	2	7
	?	?	?	?	?	?	?

FINGERDBAS

REED ORGAN

BRASS

MELODY

73

DRUMS

DISTORTION

T	4	4	4	4	4	4	6	4
A	9	9	9	9	9	9	2	9
B	7	7	7	7	7	7	7	7

FINGERDBAS

REED ORGAN

BRASS

MELODY



74

DRUMS

DISTORTION

T	4	4	4	4	4	4	4	4
A	9	9	9	9	9	9	9	9
B	7	7	7	7	7	7	7	7

FINGERDBAS

REED ORGAN

BRASS

MELODY

75

DRUMS

DISTORTION

FINGERDBAS

REED ORGAN

BRASS

MELODY



76

DRUMS

DISTORTION

FINGERDBAS

ELEC ORGAN

REED ORGAN

BRASS

MELODY

77

DRUMS

DISTORTION

FINGERDBAS

ELEC ORGAN

REED ORGAN

BRASS

MELODY



78

DRUMS

DISTORTION

FINGERDBAS

REED ORGAN

BRASS

MELODY

79

DRUMS

DISTORTION

FINGERDBAS

REED ORGAN

BRASS

MELODY



80

DRUMS

DISTORTION

FINGERDBAS

REED ORGAN

BRASS

MELODY

81

DRUMS

DISTORTION

FINGERDBAS

REED ORGAN

BRASS

MELODY

Detailed description of measures 81-84: The score is for measures 81 through 84. The Drums part features a consistent pattern of eighth notes on the snare and bass drums. The Distortion part is a guitar tab with a 4/4 time signature, showing a sequence of chords: 9-9-9, 9-9-9, 9-9-9, 9-9-9, 9-9-9, 9-9-9, 9-9-9, and 9-9-9. The Fingerdbas part has a bass line with notes G2, A2, B2, C3, D3, E3, F3, and G3. The Reed Organ part plays a rhythmic accompaniment of eighth notes in a G major chord. The Brass part is mostly silent, with a single note in measure 82. The Melody part has a simple line with notes G4, A4, B4, C5, and D5.



82

DRUMS

DISTORTION

FINGERDBAS

ELEC ORGAN

REED ORGAN

BRASS

MELODY

Detailed description of measures 85-88: The score is for measures 85 through 88. The Drums part continues with the same eighth-note pattern. The Distortion part has a guitar tab with a 4/4 time signature, showing a sequence of chords: 9-7, 9-7, 9-7, 9-7, 9-7, 9-7, 9-7, and 9-7. The Fingerdbas part has a bass line with notes G2, A2, B2, C3, D3, E3, F3, and G3. The Elec Organ part has a line with notes G4, A4, B4, C5, and D5. The Reed Organ part plays a rhythmic accompaniment of eighth notes in a G major chord. The Brass part has a line with notes G4, A4, B4, C5, and D5. The Melody part has a simple line with notes G4, A4, B4, C5, and D5.

83

DRUMS

DISTORTION

T	4	4	4	4	4	4	6	4
A	9	9	9	9	9	9	2	9
B	7	7	7	7	7	7	7	7

FINGERBAS

ELEC ORGAN

REED ORGAN

BRASS



84

DRUMS

DISTORTION

T	4	4	4	4	4	4	4
A	9	9	9	9	9	9	9
B	7	7	7	7	7	7	7

FINGERBAS

REED ORGAN

BRASS

MELODY



85

DRUMS

DISTORTION

T	4	4	4	4	4	4	4
A	9	9	9	9	9	9	9
B	7	7	7	7	7	7	7

FINGERDBAS

REED ORGAN

BRASS

MELODY



86

DRUMS

DISTORTION

T	4	4	4	4	4	4	4
A	9	9	9	9	9	9	9
B	7	7	7	7	7	7	7

FINGERDBAS

REED ORGAN

BRASS

MELODY

87

DRUMS

DISTORTION

FINGERDBAS

REED ORGAN

BRASS

MELODY

87

DRUMS

DISTORTION

FINGERDBAS

REED ORGAN

BRASS

MELODY

T	4	4	4	4	4	4	4
A	9	9	9	9	9	9	9
B	7	7	7	7	7	7	7
	?	?	?	?	?	?	?



88

DRUMS

DISTORTION

FINGERDBAS

ELEC ORGAN

REED ORGAN

BRASS

MELODY

88

DRUMS

DISTORTION

FINGERDBAS

ELEC ORGAN

REED ORGAN

BRASS

MELODY

T	4	4	1	4	4	4	4
A	9	9	6	9	9	9	9
B	9	9	2	9	9	9	9
	?	?	9	?	?	?	?

89

DRUMS

DISTORTION

FINGERDBAS

ELEC ORGAN

REED ORGAN

BRASS

MELODY



90

DRUMS

DISTORTION

FINGERDBAS

REED ORGAN

BRASS

MELODY

91

DRUMS

DISTORTION

FINGERDBAS

REED ORGAN

BRASS

MELODY



92

DRUMS

DISTORTION

FINGERDBAS

REED ORGAN

BRASS

MELODY

93

DRUMS

DISTORTION

FINGERDBAS

REED ORGAN

BRASS

MELODY



94

DRUMS

DISTORTION

FINGERDBAS

ELEC ORGAN

REED ORGAN

BRASS

MELODY

95

DRUMS

DISTORTION

FINGERDBAS

ELEC ORGAN

REED ORGAN

BRASS

MELODY



96

DRUMS

DISTORTION

FINGERDBAS

ELEC ORGAN

REED ORGAN

BRASS

# Sir Douglas Quintet - Mendocino 1

## DRUMS

♩ = 120,000000

2

6

9

11

14

16

19

22

25

27

V.S.

30

32

35

38

40

43

45

47

49

51



DRUMS

53

56

58

61

64

66

69

71

73

75

V.S.

DRUMS

77

80

82

84

86

89

91

93

95

# Sir Douglas Quintet - Mendocino 1

## DISTORTION

♩ = 120,000000

**2**

E																								
T																								
A																								
B																								
5									3	3	3	3	3	3	3	3	?	?	?	?	?	?	?	?
	.	.	.	.	.	.	.	.	.	.	.	.	.	.	.	.	.	.	.	.	.	.	.	
T	3	3	3	3	3	3	3	3	3	3	3	3	3	3	3	3	3	3	3	3	3	3	3	
A	8	8	8	8	8	8	8	8	8	8	8	8	8	8	8	8	8	8	8	8	8	8	8	
B	6	6	6	6	6	6	6	6	6	6	6	6	6	6	6	6	6	6	6	6	6	6	6	
7	?	?	?	?	?	?	?	?	?	?	?	?	?	?	?	?	?	?	?	?	?	?		
	.	.	.	.	.	.	.	.	.	.	.	.	.	.	.	.	.	.	.	.	.	.		
T	3	3	3	3	3	3	3	3	3	3	3	3	3	3	3	3	3	3	3	3	3			
A	8	8	8	8	8	8	8	8	8	8	8	8	8	8	8	8	8	8	8	8	8			
B	6	6	6	6	6	6	6	6	6	6	6	6	6	6	6	6	6	6	6	6	6			
9	?	?	?	?	?	?	?	?	?	?	?	?	?	?	?	?	?	?	?	?	?			
	.	.	.	.	.	.	.	.	.	.	.	.	.	.	.	.	.	.	.	.	.			
T	3	3	3	3	3	3	3	3	3	3	3	3	3	3	3	3	3	3	3	3	3	3		
A	8	8	8	8	8	8	8	8	8	8	8	8	8	8	8	8	8	8	8	8	8	8		
B	6	6	6	6	6	6	6	6	6	6	6	6	6	6	6	6	6	6	6	6	6	6		
11	?	?	?	?	?	?	?	?	?	?	?	?	?	?	?	?	?	?	?	?	?	?		
	.	.	.	.	.	.	.	.	.	.	.	.	.	.	.	.	.	.	.	.	.	.		
T	3	3	3	3	3	3	3	3	3	3	3	3	3	3	3	3	3	3	3	3	3	3		
A	8	8	8	8	8	8	8	8	8	8	8	8	8	8	8	8	8	8	8	8	8	8		
B	6	6	6	6	6	6	6	6	6	6	6	6	6	6	6	6	6	6	6	6	6	6		
13	?	?	?	?	?	?	?	?	?	?	?	?	?	?	?	?	?	?	?	?	?	?		
	.	.	.	.	.	.	.	.	.	.	.	.	.	.	.	.	.	.	.	.	.	.		
T	3	3	3	3	3	3	3	3	3	3	3	3	3	3	3	3	3	3	3	3	3	3		
A	8	8	8	8	8	8	8	8	8	8	8	8	8	8	8	8	8	8	8	8	8	8		
B	6	6	6	6	6	6	6	6	6	6	6	6	6	6	6	6	6	6	6	6	6	6		
15	?	?	?	?	?	?	?	?	?	?	?	?	?	?	?	?	?	?	?	?	?	?		
	.	.	.	.	.	.	.	.	.	.	.	.	.	.	.	.	.	.	.	.	.	.		
T	3	3	3	3	3	3	3	3	3	3	3	3	3	3	3	3	3	3	3	3	3	3		
A	8	8	8	8	8	8	8	8	8	8	8	8	8	8	8	8	8	8	8	8	8	8		
B	6	6	6	6	6	6	6	6	6	6	6	6	6	6	6	6	6	6	6	6	6	6		
17	?	?	?	?	?	?	?	?	?	?	?	?	?	?	?	?	?	?	?	?	?	?		
	.	.	.	.	.	.	.	.	.	.	.	.	.	.	.	.	.	.	.	.	.	.		
T	3	3	3	3	3	3	3	3	3	3	3	3	3	3	3	3	3	3	3	3	3	3		
A	8	8	8	8	8	8	8	8	8	8	8	8	8	8	8	8	8	8	8	8	8	8		
B	6	6	6	6	6	6	6	6	6	6	6	6	6	6	6	6	6	6	6	6	6	6		
19	?	?	?	?	?	?	?	?	?	?	?	?	?	?	?	?	?	?	?	?	?	?		
	.	.	.	.	.	.	.	.	.	.	.	.	.	.	.	.	.	.	.	.	.	.		
T	3	3	3	3	3	3	3	3	3	3	3	3	3	3	3	3	3	3	3	3	3	3		
A	8	8	8	8	8	8	8	8	8	8	8	8	8	8	8	8	8	8	8	8	8	8		
B	6	6	6	6	6	6	6	6	6	6	6	6	6	6	6	6	6	6	6	6	6	6		
21	?	?	?	?	?	?	?	?	?	?	?	?	?	?	?	?	?	?	?	?	?	?		
	.	.	.	.	.	.	.	.	.	.	.	.	.	.	.	.	.	.	.	.	.	.		
T	3	3	3	3	3	3	3	3	3	3	3	3	3	3	3	3	3	3	3	3	3	3		
A	8	8	8	8	8	8	8	8	8	8	8	8	8	8	8	8	8	8	8	8	8	8		
B	6	6	6	6	6	6	6	6	6	6	6	6	6	6	6	6	6	6	6	6	6	6		
	?	?	?	?	?	?	?	?	?	?	?	?	?	?	?	?	?	?	?	?	?	?		

V.S.

DISTORTION

T																
A	3	3	3	3	3	3	3	3	3	3	3	3	3	3	3	3
B	6	6	6	6	6	6	6	6	6	6	6	6	6	6	6	6

25	?	?	?	?	?	?	?	?	?	?	?	?	?	?	?	?
	.	.	.	.	.	.	.	.	.	.	.	.	.	.	.	.

T																
A	3	3	3	3	3	3	3	3	3	3	3	3	3	3	3	3
B	6	6	6	6	6	6	6	6	6	6	6	6	6	6	6	6

27	?	?	?	?	?	?	?	?	?	?	?	?	?	?	?	?
	.	.	.	.	.	.	.	.	.	.	.	.	.	.	.	.

T																
A	3	3	3	3	3	3	3	3	3	3	3	3	3	3	3	3
B	6	6	6	6	6	6	6	6	6	6	6	6	6	6	6	6

29	?	?	?	?	?	?	?	?	?	?	?	?	?	?	?	?
	.	.	.	.	.	.	.	.	.	.	.	.	.	.	.	.

T																
A	3	3	3	3	3	3	3	3	3	3	3	3	3	3	3	3
B	6	6	6	6	6	6	6	6	6	6	6	6	6	6	6	6

31	?	?	?	?	?	?	?	?	?	?	?	?	?	?	?	?
	.	.	.	.	.	.	.	.	.	.	.	.	.	.	.	.

T																
A	3	3	3	3	3	3	3	3	3	3	3	3	3	3	3	3
B	6	6	6	6	6	6	6	6	6	6	6	6	6	6	6	6

33	?	?	?	?	?	?	?	?	?	?	?	?	?	?	?	?
	.	.	.	.	.	.	.	.	.	.	.	.	.	.	.	.

T																
A	3	3	3	3	3	3	3	3	3	3	3	3	3	3	3	3
B	6	6	6	6	6	6	6	6	6	6	6	6	6	6	6	6

35	?	?	?	?	?	?	?	?	?	?	?	?	?	?	?	?
	.	.	.	.	.	.	.	.	.	.	.	.	.	.	.	.

T																
A	3	3	3	3	3	3	3	3	3	3	3	3	3	3	3	3
B	6	6	6	6	6	6	6	6	6	6	6	6	6	6	6	6

37	?	?	?	?	?	?	?	?	?	?	?	?	?	?	?	?
	.	.	.	.	.	.	.	.	.	.	.	.	.	.	.	.

T																
A	3	3	3	3	3	3	3	3	3	3	3	3	3	3	3	3
B	6	6	6	6	6	6	6	6	6	6	6	6	6	6	6	6

39	?	?	?	?	?	?	?	?	?	?	?	?	?	?	?	?
	.	.	.	.	.	.	.	.	.	.	.	.	.	.	.	.

T																
A	3	3	3	3	3	3	3	3	3	3	3	3	3	3	3	3
B	6	6	6	6	6	6	6	6	6	6	6	6	6	6	6	6

41	?	?	?	?	?	?	?	?	?	?	?	?	?	?	?	?
	.	.	.	.	.	.	.	.	.	.	.	.	.	.	.	.

T																
A	3	3	3	3	3	3	3	3	3	3	3	3	3	3	3	3
B	6	6	6	6	6	6	6	6	6	6	6	6	6	6	6	6

	?	?	?	?	?	?	?	?	?	?	?	?	?	?	?	?
	.	.	.	.	.	.	.	.	.	.	.	.	.	.	.	.

DISTORTION

43

T															
A															
B	3	3	3	3	3	3	3	3	3	3	3	3	3	3	3
	8	8	8	8	8	8	8	8	8	8	8	8	8	8	8
	6	6	6	6	6	6	6	6	6	6	6	6	6	6	6
	?	?	?	?	?	?	?	?	?	?	?	?	?	?	?

45

T															
A															
B	3	3	3	3	3	3	3	3	3	3	3	3	3	3	3
	8	8	8	8	8	8	8	8	8	8	8	8	8	8	8
	6	6	6	6	6	6	6	6	6	6	6	6	6	6	6
	?	?	?	?	?	?	?	?	?	?	?	?	?	?	?

47

T															
A															
B	3	3	3	3	3	3	3	3	3	3	3	3	3	3	3
	8	8	8	8	8	8	8	8	8	8	8	8	8	8	8
	6	6	6	6	6	6	6	6	6	6	6	6	6	6	6
	?	?	?	?	?	?	?	?	?	?	?	?	?	?	?

49

T															
A															
B	3	3	5	3	3	3	3	3	3	3	5	3	3	3	3
	8	8	1	8	8	8	8	8	8	8	1	8	8	8	8
	6	6	6	6	6	6	6	6	6	6	8	6	6	6	6
	?	?		?	?	?	?	?	?	?	?	?	?	?	?

51

T															
A															
B	3	3	0	3	3	3	3	3	3	3	3	3	3	0	3
	8	8	1	8	8	8	8	8	8	8	8	8	8	1	8
	6	6	6	6	6	6	6	6	6	6	6	6	6	6	6
	?	?		?	?	?	?	?	?	?	?	?	?		?

53

T															
A															
B	3	3	0	3	3	3	3	3	3	3	3	3	3	0	3
	8	8	1	8	8	8	8	8	8	8	8	8	8	1	8
	6	6	6	6	6	6	6	6	6	6	6	6	6	6	6
	?	?		?	?	?	?	?	?	?	?	?	?		?

55

T															
A															
B	3	3	3	3	3	3	3	3	3	3	3	3	3	3	3
	8	8	8	8	8	8	8	8	8	8	8	8	8	8	8
	6	6	6	6	6	6	6	6	6	6	6	6	6	6	6
	?	?	?	?	?	?	?	?	?	?	?	?	?	?	?

57

T															
A															
B	3	3	3	3	3	3	3	3	3	3	3	3	3	3	3
	8	8	8	8	8	8	8	8	8	8	8	8	8	8	8
	6	6	6	6	6	6	6	6	6	6	6	6	6	6	6
	?	?	?	?	?	?	?	?	?	?	?	?	?	?	?

59

T															
A															
B	3	3	3	3	3	3	3	3	3	3	3	3	3	3	3
	8	8	8	8	8	8	8	8	8	8	8	8	8	8	8
	6	6	6	6	6	6	6	6	6	6	6	6	6	6	6
	?	?	?	?	?	?	?	?	?	?	?	?	?	?	?

61

T															
A															
B	3	3	3	3	3	3	3	3	3	3	3	3	3	3	3
	8	8	8	8	8	8	8	8	8	8	8	8	8	8	8
	6	6	6	6	6	6	6	6	6	6	6	6	6	6	6
	?	?	?	?	?	?	?	?	?	?	?	?	?	?	?

V.S.

DISTORTION

T															
A	3	3	3	3	3	3	3	3	3	3	3	3	3	3	3
B	8	8	8	8	8	8	8	8	8	8	8	8	8	8	8

65	?	?	?	?	?	?	?	?	?	?	?	?	?	?	?
	.	.	.	.	.	.	.	.	.	.	.	.	.	.	.

T															
A	3	3	3	3	3	3	3	3	3	3	3	3	3	3	3
B	8	8	8	8	8	8	8	8	8	8	8	8	8	8	8

67	?	?	?	?	?	?	?	?	?	?	?	?	?	?	?
	.	.	.	.	.	.	.	.	.	.	.	.	.	.	.

T															
A	3	3	3	3	3	3	3	3	3	3	3	3	3	3	3
B	8	8	8	8	8	8	8	8	8	8	8	8	8	8	8

69	?	?	?	?	?	?	?	?	?	?	?	?	?	?	?
	.	.	.	.	.	.	.	.	.	.	.	.	.	.	.

T			0	3	3	3	3	3	3	3	3	3	3	3	3
A	3	3	5	3	3	3	3	3	3	3	3	3	3	3	3
B	8	8	1	8	8	8	8	8	8	8	8	8	8	8	8

71	?	?	8	?	?	?	?	?	?	?	?	?	?	?	?
	.	.	.	.	.	.	.	.	.	.	.	.	.	.	.

T														1	
A	3	3	3	3	3	3	3	3	3	3	3	3	3	6	4
B	8	8	8	8	8	8	8	8	8	8	8	8	8	2	9

73	?	?	?	?	?	?	?	?	?	?	?	?	?	?	?
	.	.	.	.	.	.	.	.	.	.	.	.	.	.	.

T								1							
A	4	4	4	4	4	4	4	6	4	4	4	4	4	4	4
B	9	9	9	9	9	9	9	2	9	9	9	9	9	9	9

75	?	?	?	?	?	?	?	?	?	?	?	?	?	?	?
	.	.	.	.	.	.	.	.	.	.	.	.	.	.	.

T															
A	4	4	4	4	4	4	4	4	4	4	1	4	4	4	4
B	9	9	9	9	9	9	9	9	9	9	6	9	9	9	9

77	?	?	?	?	?	?	?	?	?	?	?	?	?	?	?
	.	.	.	.	.	.	.	.	.	.	.	.	.	.	.

T			1												
A	4	4	6	4	4	4	4	4	4	4	4	4	4	4	4
B	9	9	2	9	9	9	9	9	9	9	9	9	9	9	9

79	?	?	?	?	?	?	?	?	?	?	?	?	?	?	?
	.	.	.	.	.	.	.	.	.	.	.	.	.	.	.

T															
A	4	4	4	4	4	4	4	4	4	4	4	4	4	4	4
B	9	9	9	9	9	9	9	9	9	9	9	9	9	9	9

81	?	?	?	?	?	?	?	?	?	?	?	?	?	?	?
	.	.	.	.	.	.	.	.	.	.	.	.	.	.	.

T															
A	4	4	4	4	4	4	4	4	4	4	4	4	4	4	4
B	9	9	9	9	9	9	9	9	9	9	9	9	9	9	9

	?	?	?	?	?	?	?	?	?	?	?	?	?	?	?
	.	.	.	.	.	.	.	.	.	.	.	.	.	.	.

83

T															
A	4	4	4	4	4	4	1	4	4	4	4	4	4	4	4
B	9	9	9	9	9	9	6	9	9	9	9	9	9	9	9
	7	7	7	7	7	7	2	7	7	7	7	7	7	7	7
	?	?	?	?	?	?	?	?	?	?	?	?	?	?	?

85

T															
A	4	4	4	4	4	4	4	4	4	4	4	4	4	4	4
B	9	9	9	9	9	9	9	9	9	9	9	9	9	9	9
	7	7	7	7	7	7	7	7	7	7	7	7	7	7	7
	?	?	?	?	?	?	?	?	?	?	?	?	?	?	?

87

T															
A	4	4	4	4	4	4	4			1					
B	9	9	9	9	9	9	9	4	4	6	4	4	4	4	4
	7	7	7	7	7	7	7	9	9	2	9	9	9	9	9
	?	?	?	?	?	?	?	?	?	?	?	?	?	?	?

89

T															
A	4	4	4	4	4	4	4	4	4	4	4	4	4	1	4
B	9	9	9	9	9	9	9	9	9	9	9	9	9	6	9
	9	9	9	9	9	9	9	9	9	9	9	9	9	9	9
	?	?	?	?	?	?	?	?	?	?	?	?	?	?	?

91

T															
A	4	4	4	4	4	4	1	4	4	4	4	4	4	4	4
B	9	9	9	9	9	9	6	9	9	9	9	9	9	9	9
	9	9	9	9	9	9	2	9	9	9	9	9	9	9	9
	?	?	?	?	?	?	?	?	?	?	?	?	?	?	?

93

T															
A	4	4	4	4	4	4	4	4	4	1	4	4	4	4	4
B	9	9	9	9	9	9	9	9	9	6	9	9	9	9	9
	9	9	9	9	9	9	9	9	9	2	9	9	9	9	9
	?	?	?	?	?	?	?	?	?	?	?	?	?	?	?

95

T															
A	4	4	4	4	4	4	4	4	4						
B	9	9	9	9	9	9	9	9	9	4					
	7	7	7	7	7	7	7	7	7	2					
	?	?	?	?	?	?	?	?	?						

**2**

♩ = 120,000000

2



7



11



15



19



23



27



31



35



39



V.S.



43



47



51



55



59



63



67



71



74



78



81



85



88



91



94



♩ = 130,000000

7 2

14 4

22 4 4

33 4 4

44

48

53

57 2

64 4

71 4 4

2

ELEC ORGAN

Musical notation for ELEC ORGAN, measures 82-88. The notation is on a single treble clef staff. Measure 82 starts with a treble clef and a key signature of two sharps (F# and C#). It contains four chords: F#4, C#5, F#4, and C#5. Measure 83 contains a whole note chord of F#4. Measure 84 is a whole rest. Measure 85 is a whole rest. Measure 86 is a whole rest. Measure 87 is a whole rest. Measure 88 starts with a double bar line and a key signature change to one sharp (F#). It contains four chords: F#4, C#5, F#4, and C#5.

Musical notation for ELEC ORGAN, measures 89-92. The notation is on a single treble clef staff. Measure 89 starts with a treble clef and a key signature of one sharp (F#). It contains a whole note chord of F#4. Measure 90 is a whole rest. Measure 91 contains four chords: F#4, C#5, F#4, and C#5. Measure 92 is a whole rest.

REED ORGAN

Sir Douglas Quintet - Mendocino 1

♩ = 120,000000

6

9

11

13

15

17

19

21

V.S.

REED ORGAN

23



25



27



29



31



33



35



37



REED ORGAN

39



41



43



45



47



49



51



53



V.S.

REED ORGAN

55



57



59



61



63



65



67



69



71





73

75

77

79

81

83

85

87

89

91

REED ORGAN

93

Musical notation for measures 93 and 94. The key signature has two sharps (F# and C#). The melody consists of eighth notes with a rhythmic pattern of quarter notes and eighth notes. Measure 93 contains 10 notes, and measure 94 contains 10 notes.

95

Musical notation for measures 95 and 96. Measure 95 contains 10 notes. Measure 96 contains a whole rest followed by a double bar line and a fermata. A large number '2' is positioned above the end of the staff.

BRASS

Sir Douglas Quintet - Mendocino 1

♩ = 120,000000

2

8 62

74

80

86

91

95 2

MELODY

Sir Douglas Quintet - Mendocino 1

♩ = 120,000000

6

11

16

20

24

28

33

38

42

13

58



63



67



72



76



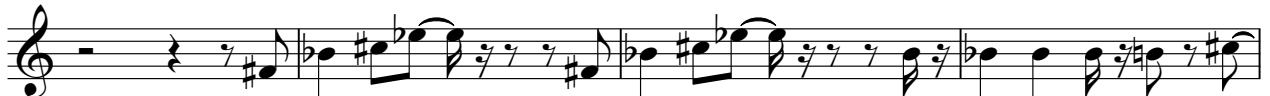
80



85



89



93



3