

Tartarus - Battle with Hades

♩ = 60,000000

Harp

Harp

Acoustic Bass

Battle of Olympus 1989

♩ = 60,000000



Hp.

Hp.

A. Bass

Battle of Olympus 1989

1989 Imagineer / Infinity

3

6 6 6 6

Copy. by K Sawa
george@getstuff.de

Arranged Vers.

Hp.

Hp.

A. Bass

Battle of Olympus 1989



4

6 6 6 3

Copy. by K Sawa
george@getstuff.de

Arranged Vers.

Battle of Olympus 1989

5

6 6 6 6

Copy. by K Sawa
george@getstuff.de

Arranged Vers.

Battle of Olympus 1989



6

6 6 6 3

Copy. by K Sawa
george@getstuff.de

Arranged Vers.

Battle of Olympus 1989

9

Copy. by K Sawa

george@getstuff.de

Arranged Vers.

Tartarus - Battle with Hades

Battle of Olympus 1989

10

Copy. by K Sawa
george@getstuff.de

Arranged Vers.

Tartarus - Battle with Hades

Battle of Olympus 1989



11

Copy. by K Sawa
george@getstuff.de

Arranged Vers.

Tartarus - Battle with Hades

Battle of Olympus 1989

12

Copy. by K Sawa

Musical notation for Copy. by K Sawa, featuring two staves with guitar-specific notation including sixths and triplets.

george@getstuff.de

Musical notation for george@getstuff.de, featuring a single staff with guitar-specific notation including sixths.

Musical notation for a guitar part, featuring a single staff with guitar-specific notation including sixths and triplets.

Arranged Vers.

Musical notation for Arranged Vers., featuring a single staff with standard musical notation.

Tartarus - Battle with Hades

Musical notation for Tartarus - Battle with Hades, featuring a single staff with guitar-specific notation including sixths.

Battle of Olympus 1989

Musical notation for Battle of Olympus 1989, featuring a single staff with standard musical notation.

13

Copy. by K Sawa

george@getstuff.de

Arranged Vers.

Tartarus - Battle with Hades

- George Vallant

Battle of Olympus 1989



14

Arranged Vers.

Tartarus - Battle with Hades

- George Vallant

Battle of Olympus 1989

15

Arranged Vers.

Tartarus - Battle with Hades

Battle of Olympus 1989



16

Arranged Vers.

Tartarus - Battle with Hades

Battle of Olympus 1989

Tartarus - Battle with Hades

♩ = 60,000000

2

3

4

5

6

7

9

10

11

12

089 Imageer Infinity V.S.

2

13

Musical notation for guitar. The notation consists of a treble clef staff and a bass clef staff with a flat sign. The treble staff contains a quarter note, a quarter rest, a quarter note, and a quarter rest. The bass staff contains a quarter note, a quarter rest, a quarter note, and a quarter rest. A 4-measure rest is indicated by a thick black bar above the treble staff. The number '4' is written above the rest. A double bar line is at the end of the notation.

Copy. by K Sawa Tartarus - Battle with Hades

♩ = 60,000000

2

3

4

5

6

7

9

10

11

12

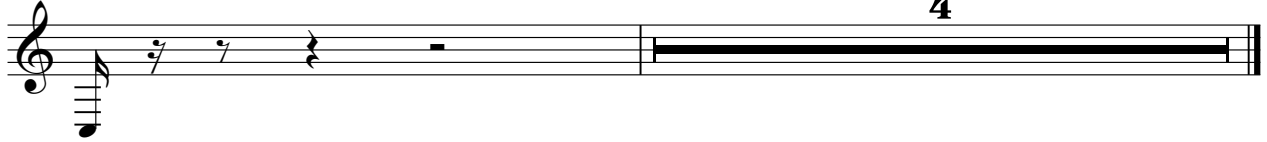
© 2008 Imaginizer / Infinity

V.S.

2

Copy. by K Sawa

13



♩ = 60,000000

2

3 6 6 6 6

4 6 6 6 6

5 6 6 6 6

6 6 6 6

7

9 6 6 6 6

10 6 6 6 6

11 6 6 6 6

12 6 6 6 6

2

george@getstuff.de

13

A musical staff in treble clef with a key signature of one flat (B-flat). The staff contains a sequence of notes: a quarter note on G4, a quarter note on F4, a quarter note on E4, and a quarter note on D4. There are two slash marks above the staff, one above the first note and one above the second note. A bar line is positioned after the fourth note. Above the staff, the number '4' is written. The staff ends with a double bar line.

Tartarus - Battle with Hades

♩ = 60,000000

The image displays a guitar tablature for the song 'Tartarus - Battle with Hades'. It consists of seven staves of music, each starting with a measure number (2, 4, 6, 9, 11, 13, 15). The music is written in 4/4 time. The first staff includes a tempo marking of 60,000000. The notation includes various guitar-specific symbols such as 'x' for muted notes, asterisks for bends, and brackets with the number '3' for triplets. The piece concludes with a final measure on the seventh staff.

1989 Imagineer / Infinity

Arranged Vers. Tartarus - Battle with Hades

♩ = 60,000000

2

4

6

7

8

9

11

13

14

6 6 6 6

6 6 6 6

6 6 6 6

6 6 6 6

1989 Imagineer / Infinity

V.S.

2

Arranged Vers.

Musical score for an arranged verse, measures 15-17. The score is written for piano in a key signature of one flat (B-flat major or D minor). Measure 15 begins with a treble clef and a bass clef. The treble staff contains a melodic line starting with a B-flat, followed by a series of eighth notes and a triplet of eighth notes. The bass staff contains a rhythmic accompaniment with a triplet of eighth notes. Measures 16 and 17 continue the melodic and rhythmic patterns, with the treble staff showing a descending melodic line and the bass staff showing a steady eighth-note accompaniment. The score ends with a double bar line.

Harp

Tartarus - Battle with Hades

♩ = 60,000000

2

3

14

1989 Imagineer / Infinity

Harp

Tartarus - Battle with Hades

♩ = 60,000000

2

6

3

14

1989 Imagineer / Infinity

Acoustic Bass Tartarus - Battle with Hades

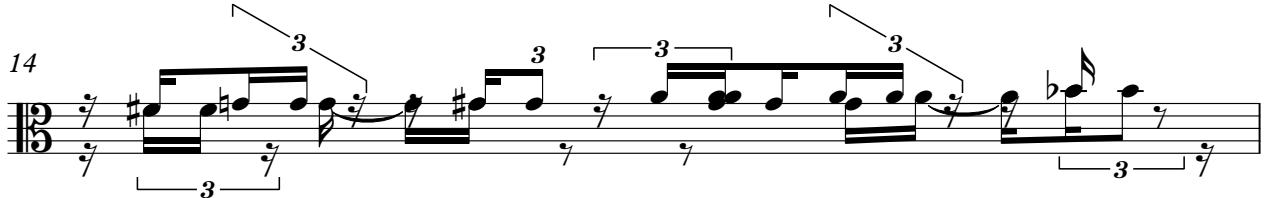
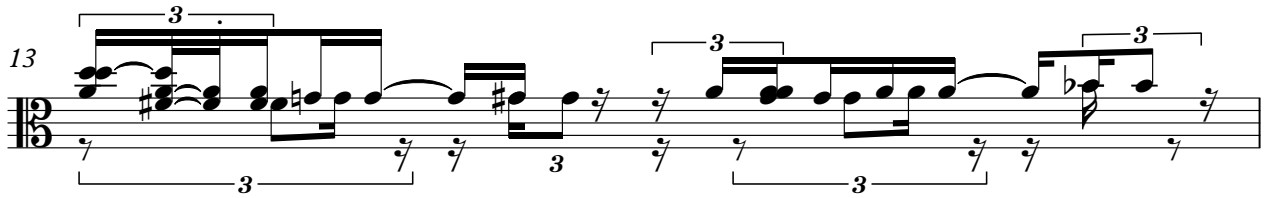
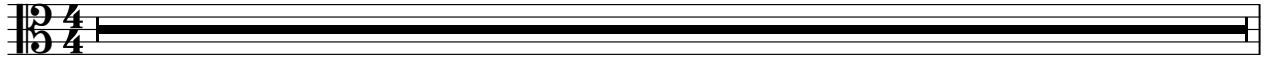
♩ = 60,000000

3 3 14

Tartarus - Battle with Hades

♩ = 60,000000

8



1989 Imagineer / Infinity

Tartarus - Battle with Hades
Battle of Olympus 1989

♩ = 60,000000

3

3

5

7

9

11

13

15

1989 Imagineer / Infinity