

Tema - Chaves

♩ = 120,000000

This musical score system includes five staves: Flute, Drums, Guitar, Bass, and E.Piano. The Flute part features a melodic line with eighth and sixteenth notes. The Drums part shows a steady eighth-note pattern. The Guitar part consists of chords with a rhythmic pattern of eighth notes. The Bass part has a simple eighth-note bass line. The E.Piano part provides a harmonic accompaniment with eighth notes.



7

This musical score system includes six staves: Flute, Solo, Drums, Guitar, Bass, and E.Piano. The Flute part continues its melodic line. The Solo part has a rhythmic pattern of eighth notes. The Drums part maintains the eighth-note pattern. The Guitar part features a complex chordal structure with eighth notes. The Bass part continues its eighth-note bass line. The E.Piano part provides a harmonic accompaniment with eighth notes.

14

Flute

Solo

Drums

Guitar

Bass

E.Piano



20

Solo

Drums

Guitar

Bass

E.Piano

Solo2

Strings

28

Flute

Solo

Drums

Guitar

Bass

E.Piano

Solo2

Strings

Detailed description: This system of music covers measures 28 through 34. The Flute part begins with a melodic phrase in measure 28, featuring a trill and a grace note. The Solo part provides a rhythmic accompaniment with eighth and sixteenth notes. The Drums play a consistent pattern of eighth notes. The Guitar part consists of a series of chords, some with grace notes. The Bass line follows a similar rhythmic pattern to the Solo part. The E.Piano part has a melodic line with some rests. Solo2 has a melodic line with eighth notes. The Strings part is mostly silent, with some sustained chords in the beginning.



35

Flute

Solo

Drums

Guitar

Bass

E.Piano

Detailed description: This system of music covers measures 35 through 41. The Flute part continues with melodic phrases, including a triplet in measure 36. The Solo part continues with its rhythmic accompaniment. The Drums maintain their eighth-note pattern. The Guitar part continues with its chordal accompaniment. The Bass line continues with its rhythmic accompaniment. The E.Piano part continues with its melodic line.

41

Solo

Drums

Guitar

Bass

E.Piano

Solo2

Strings



49

Flute

Solo

Drums

Guitar

Bass

E.Piano

Solo2

Strings

56

Flute

Solo

Drums

Guitar

Bass

E.Piano

Detailed description: This musical system covers measures 56 to 61. The Flute part has a melodic line with a triplet in measure 60. The Solo part features a steady eighth-note accompaniment. The Drums play a consistent backbeat. The Guitar part consists of a series of chords, some with a slash indicating a barre. The Bass part provides a simple bass line. The E.Piano part has sparse chordal accompaniment.



62

Flute

Solo

Drums

Guitar

Bass

E.Piano

Detailed description: This musical system covers measures 62 to 67. The Flute part continues with its melodic line. The Solo part maintains its eighth-note accompaniment. The Drums play the same backbeat. The Guitar part continues with its chordal accompaniment. The Bass part continues with its bass line. The E.Piano part continues with its sparse accompaniment.

69

Flute

Solo

Drums

Guitar

Bass

E.Piano

Solo2

Strings

Detailed description: This block contains the musical score for measures 69 through 76. The score is arranged in a grand staff format with eight staves. The top two staves are for Flute and Solo. The Flute part has a whole rest for the first six measures and a half note in the seventh measure. The Solo part has a whole rest for the first six measures and a half note in the seventh measure. The Drums part features a consistent rhythmic pattern of eighth notes with 'x' marks above them. The Guitar part consists of a series of chords with a rhythmic pattern of eighth notes. The Bass part has a melodic line with eighth notes. The E.Piano part has a melodic line with eighth notes. The Solo2 part has a melodic line with eighth notes. The Strings part has a sustained chord in the seventh measure.



77

Flute

Solo

Drums

Guitar

Bass

E.Piano

Solo2

Detailed description: This block contains the musical score for measures 77 through 84. The score is arranged in a grand staff format with eight staves. The top two staves are for Flute and Solo. The Flute part has a melodic line with eighth notes and a triplet in the first measure. The Solo part has a melodic line with eighth notes. The Drums part features a consistent rhythmic pattern of eighth notes with 'x' marks above them. The Guitar part consists of a series of chords with a rhythmic pattern of eighth notes. The Bass part has a melodic line with eighth notes. The E.Piano part has a melodic line with eighth notes. The Solo2 part has a whole rest for the first six measures and a half note in the seventh measure.

83

Flute

Solo

Drums

Guitar

Bass

E.Piano

Detailed description: This system contains six staves. The Flute staff (top) has a treble clef and a key signature of one flat. It features a triplet of eighth notes in the first measure, followed by rests. The Solo staff (second) has a treble clef and a key signature of one flat, with a triplet of eighth notes in the first measure. The Drums staff (third) has a drum set icon and shows a consistent rhythmic pattern of eighth notes with 'x' marks above them. The Guitar staff (fourth) has a treble clef and a key signature of one flat, with a complex chordal accompaniment. The Bass staff (fifth) has a bass clef and a key signature of one flat, with a melodic line. The E.Piano staff (bottom) has a treble clef and a key signature of one flat, with a sparse accompaniment.



89

Solo

Drums

Guitar

Bass

E.Piano

Solo2

Strings

Detailed description: This system contains seven staves. The Solo staff (top) has a treble clef and a key signature of one flat, with a melodic line. The Drums staff (second) has a drum set icon and shows a consistent rhythmic pattern of eighth notes with 'x' marks above them. The Guitar staff (third) has a treble clef and a key signature of one flat, with a complex chordal accompaniment. The Bass staff (fourth) has a bass clef and a key signature of one flat, with a melodic line. The E.Piano staff (fifth) has a treble clef and a key signature of one flat, with a sparse accompaniment. The Solo2 staff (sixth) has a treble clef and a key signature of one flat, with a melodic line. The Strings staff (bottom) has a treble clef and a key signature of one flat, with a sustained chordal accompaniment.

97

Flute

Solo

Drums

Guitar

Bass

E.Piano

Solo2

Strings



104

Flute

Solo

Drums

Guitar

Bass

E.Piano

110

Solo

Drums

Guitar

Bass

E.Piano

Solo2

Strings

Detailed description: This system contains measures 110 through 117. The Solo part features a melodic line in the treble clef with a key signature of one flat. The Drums part shows a consistent rhythmic pattern of eighth notes. The Guitar part consists of a series of chords, primarily triads and dyads, with some chromatic movement. The Bass part provides a steady accompaniment with eighth notes. The E.Piano part has sparse, chordal accompaniment. Solo2 and Strings are mostly silent, with some chordal support from the strings in the final measure.



118

Flute

Drums

Guitar

Bass

E.Piano

Solo2

Strings

Detailed description: This system contains measures 118 through 125. The Flute part enters in measure 118 with a melodic line. The Drums part continues with a similar rhythmic pattern, including a triplet in measure 120. The Guitar part continues with its chordal accompaniment. The Bass part maintains its accompaniment. The E.Piano part has sparse accompaniment. Solo2 and Strings provide additional accompaniment, with the strings playing sustained chords.

126

Flute

Drums

Guitar

Bass

E.Piano

Detailed description: This system contains measures 126 through 131. The Flute part begins with a melodic line in measure 126, featuring eighth and sixteenth notes. The Drums part provides a steady rhythmic accompaniment with a consistent pattern of eighth notes. The Guitar part plays a series of chords, primarily triads and dyads, with a consistent strumming pattern. The Bass part follows a simple eighth-note line. The E.Piano part has sparse, sustained notes.



132

Drums

Guitar

Bass

E.Piano

Detailed description: This system contains measures 132 through 135. The Drums part continues with the same rhythmic pattern. The Guitar part maintains its chordal accompaniment. The Bass part continues with its eighth-note line. The E.Piano part has sparse, sustained notes.



136

Drums

Guitar

Bass

E.Piano

Strings

Detailed description: This system contains measures 136 through 139. The Drums part continues with the same rhythmic pattern. The Guitar part features a long, sustained chord in measure 138. The Bass part continues with its eighth-note line. The E.Piano part has sparse, sustained notes. The Strings part has a long, sustained chord in measure 138.

Flute

Tema - Chaves

♩ = 120,000000

Musical score for Flute, titled "Tema - Chaves". The score is in 2/4 time and consists of 113 measures. The tempo is marked as ♩ = 120,000000. The key signature has one flat (B-flat). The score is divided into systems of five lines each. Measure numbers 8, 16, 34, 40, 58, 75, 83, 100, and 106 are indicated at the start of their respective lines. The score features various rhythmic patterns, including eighth and sixteenth notes, and rests. There are several triplet markings (indicated by a '3' and a bracket) and twelve-measure rests (indicated by a '12' and a thick horizontal line). The notation includes stems, beams, and slurs.

2

Flute

121

Musical notation for Flute, measures 121-127. The notation is on a single staff with a treble clef. Measure 121 starts with a quarter rest, followed by a quarter note G4. Measure 122 contains a quarter note G4, a quarter note A4, and a quarter note B4. Measure 123 features a triplet of eighth notes: G4, A4, and B4. Measure 124 has a quarter rest, a quarter note G4, and a quarter note F4. Measure 125 contains a quarter note G4, a quarter note A4, and a quarter note B4. Measure 126 has a quarter rest, a quarter note G4, and a quarter note F4. Measure 127 concludes with a quarter note G4 and a quarter note F4.

128

Musical notation for Flute, measures 128-136. The notation is on a single staff with a treble clef. Measure 128 starts with a quarter rest, followed by a quarter note G4, a quarter note A4, and a quarter note B4. Measure 129 contains a quarter note G4, a quarter note A4, and a quarter note B4. Measure 130 has a quarter rest, a quarter note G4, and a quarter note F4. Measure 131 features a triplet of eighth notes: G4, A4, and B4. Measure 132 contains a quarter note G4, a quarter note A4, and a quarter note B4. Measure 133 has a quarter rest, a quarter note G4, and a quarter note F4. Measure 134 features a triplet of eighth notes: G4, A4, and B4. Measure 135 contains a quarter note G4, a quarter note A4, and a quarter note B4. Measure 136 concludes with a whole note G4.

Tema - Chaves

Solo

♩ = 120,000000

7

14

22

35

43

56

64

78

86

90

7

8

Tema - Chaves

Drums

♩ = 120,000000

The image displays ten staves of drum notation for the piece 'Tema - Chaves'. Each staff begins with a measure number (9, 17, 25, 33, 41, 49, 57, 65, 73) and a double bar line. The notation is written on a five-line staff with a 'D' (drum) symbol on the left. The rhythm is consistent across all staves, featuring a steady eighth-note pattern. Above the staff, there are 'x' marks indicating specific drum hits. The first staff includes a tempo marking '♩ = 120,000000' and a 2/4 time signature. The notation concludes with a double bar line and a repeat sign.

V.S.

Drums

81

89

97

105

113

121

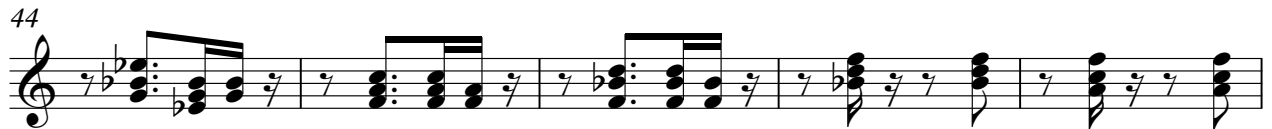
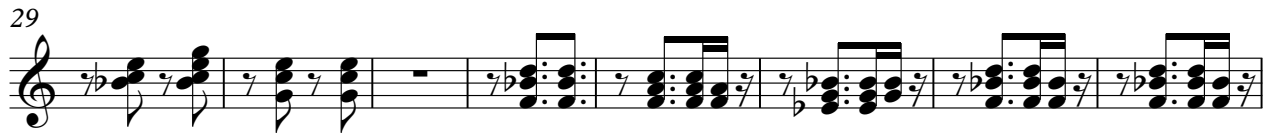
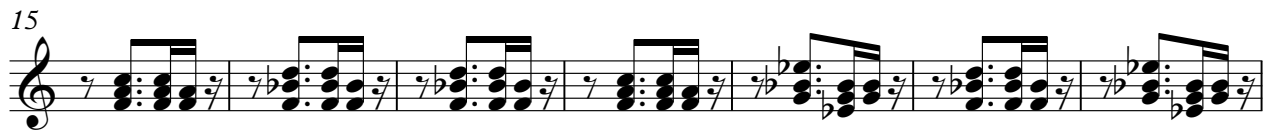
129

135

Tema - Chaves

Guitar

♩ = 120,000000



55



62



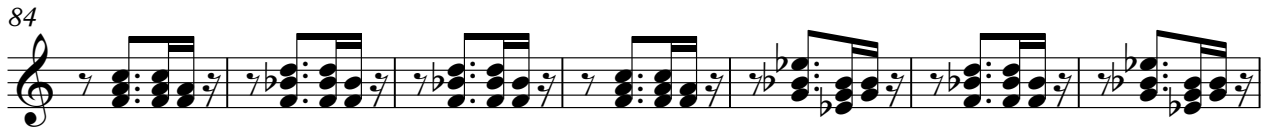
69



76



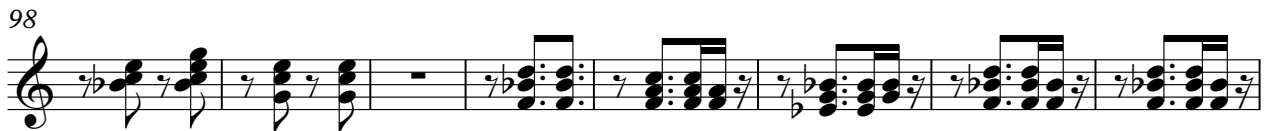
84



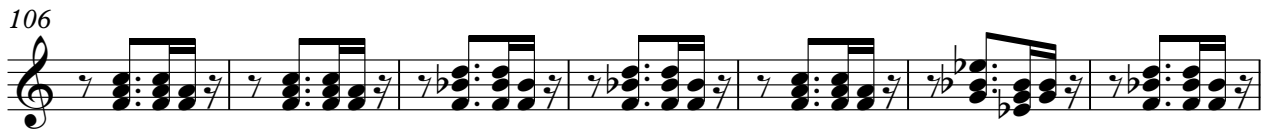
91



98



106



113



120



128



134



Tema - Chaves

Bass

♩ = 120,000000



10



19



28



38



47



57



66



75



85



V.S.

94



104



113



122



132



♩ = 120,000000



10



21



32



43



53



64



74



V.S.

85



95



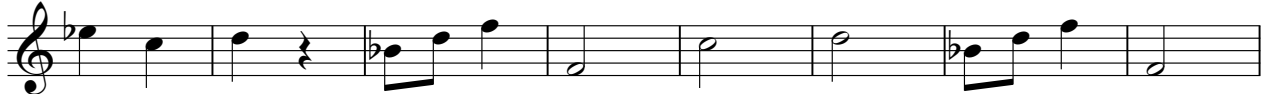
105



116



126



134



Tema - Chaves

Solo2

♩ = 120,000000

23

30

15

51

15

72

15

94

15

116

121

17

Detailed description: This image shows a musical score for a guitar solo. It consists of seven staves of music in 2/4 time. The tempo is marked as ♩ = 120,000000. The key signature has one flat (B-flat). The score is divided into measures, with measure numbers 23, 30, 51, 72, 94, 116, and 121 indicated at the start of their respective staves. Some measures contain a thick black bar, likely representing a long note or a specific technique. The notation includes eighth and sixteenth notes, rests, and a double bar line at the end of the final staff.

Strings

Tema - Chaves

♩ = 120,000000

23

31

16

16

70

16

96

16

119

15