

Beatles - Day tripper

♩ = 200,000000 ♩ = 137,004440

Percussion

Vibraphone

Vibraphone

Electric Guitar

Electric Guitar

Kora

Acoustic Bass

♩ = 200,000000 ♩ = 137,004440
0283TRIP

6

Perc.

E. Gtr.

E. Gtr.


A. Bass


Perc. 


E. Gtr. 

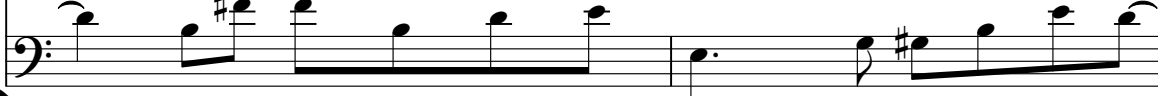
E. Gtr. 

A. Bass 

Perc. 

E. Gtr. 

E. Gtr. 

A. Bass 

13 $\text{♩} = 138,002090$ 3

Perc. 

Vib. 

Vib. 

E. Gtr. 

E. Gtr. 

A. Bass 

15 

Vib. 

Vib. 

E. Gtr. 

E. Gtr. 

A. Bass 

17

Perc. 

Vib. 

Vib. 

E. Gtr. 

E. Gtr. 

A. Bass 

19

Perc. 

Vib. 

Vib. 

E. Gtr. 

E. Gtr. 

A. Bass 

21

Perc. 

Vib. 

Vib. 

E. Gtr. 

E. Gtr. 

A. Bass 

23

Perc. 

Vib. 

Vib. 

E. Gtr. 

E. Gtr. 

A. Bass 

25

$\text{♩} = 137,004440$

Perc. 

Vib. 

Vib. 

$\text{♩} = 137,004440$

E. Gtr. 

E. Gtr. 

A. Bass 

27

Perc. 

Vib. 

Vib. 

E. Gtr. 

E. Gtr. 

A. Bass 

29

Perc. 

Vib. 

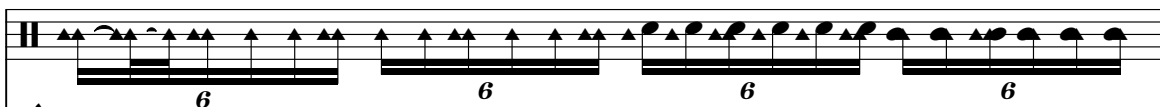
Vib. 

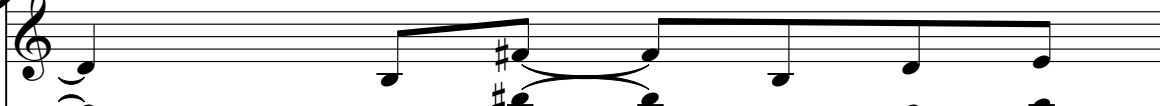
E. Gtr. 

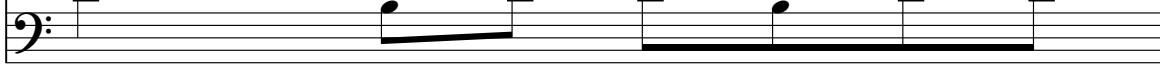
E. Gtr. 

A. Bass 

31

Perc. 

E. Gtr. 

A. Bass 

32 $\text{♩} = 138,002090$

Perc. 

E. Gtr. 

E. Gtr. 

A. Bass 

34

Perc. 

Vib. 

Vib. 

E. Gtr. 

E. Gtr. 

A. Bass 

36

Perc. 

Vib. 

Vib. 

E. Gtr. 

E. Gtr. 

A. Bass 

38

Perc. 

Vib. 

Vib. 

E. Gtr. 

E. Gtr. 

A. Bass 

40

Perc. 

Vib. 

Vib. 

E. Gtr. 

E. Gtr. 

A. Bass 

42 $\text{♩} = 137,004440$

Perc. 

Vib. 

Vib. 

E. Gtr. 

E. Gtr. 

A. Bass 

44

Perc. 

Vib. 

Vib. 

E. Gtr. 

E. Gtr. 

A. Bass 

46

Perc.

Vib.

Vib.

E. Gtr.

E. Gtr.

A. Bass

Measures 46-47. Percussion: Complex rhythmic pattern with eighth and sixteenth notes. Vibraphone 1: Melodic line with slurs. Vibraphone 2: Sustained note with a slur. Electric guitar 1 and 2: Chordal accompaniment. Acoustic bass: Walking bass line.

48

Perc.

Vib.

Vib.

E. Gtr.

E. Gtr.

A. Bass

Measures 48-49. Percussion: Continues with a similar rhythmic pattern. Vibraphone 1: Rests. Vibraphone 2: Melodic line. Electric guitar 1 and 2: Chordal accompaniment. Acoustic bass: Walking bass line.

12

50 $\text{♩} = 136,004456$

Perc.

E. Gtr. $\text{♩} = 136,004456$

E. Gtr.

Kora

A. Bass

52

E. Gtr.

E. Gtr.

Kora

A. Bass

54 $\text{♩} = 137,004440$ 13

Perc.

E. Gtr. $\text{♩} = 137,004440$

E. Gtr.

Kora

A. Bass

56

Vib.

E. Gtr.

E. Gtr.

Kora

A. Bass

58

Perc.

Vib.

E. Gtr.

E. Gtr.

Kora

A. Bass

58

59

Perc.

Vib.

E. Gtr.

E. Gtr.

Kora

A. Bass

59

60 ♩ = 138,002090

Perc.

Vib.

♩ = 138,002090

E. Gtr.

E. Gtr.

Kora

A. Bass

61

Perc.

Vib.


E. Gtr.

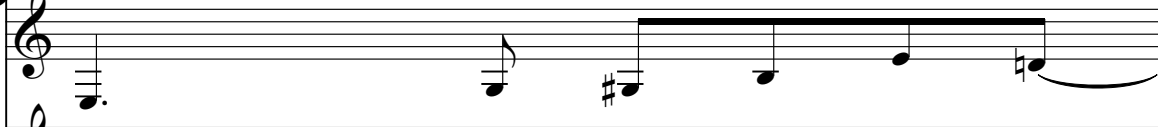
E. Gtr.


Kora


A. Bass

62

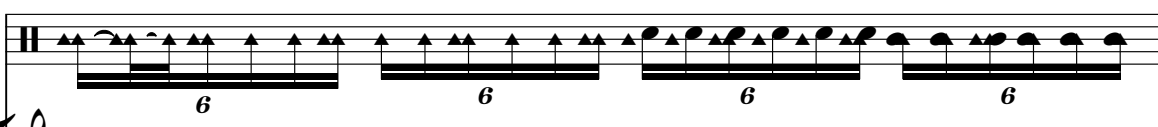
Perc. 

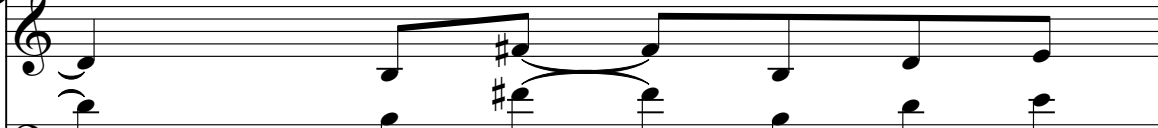
E. Gtr. 

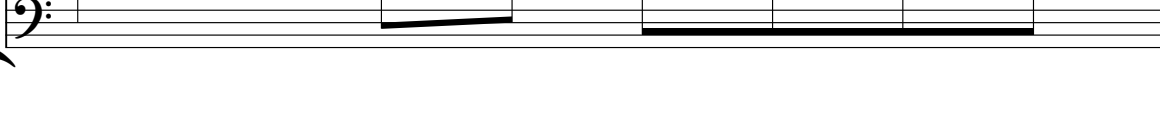
E. Gtr. 

A. Bass 

63

Perc. 

E. Gtr. 

A. Bass 

64 $\text{♩} = 137,004440$

Perc. 

E. Gtr. $\text{♩} = 137,004440$ 

E. Gtr. 

A. Bass 

66

Perc.

Vib.

Vib.

E. Gtr.

E. Gtr.

A. Bass

67

68

Perc.

Vib.

Vib.

E. Gtr.

E. Gtr.

A. Bass

69

70

Perc. 

Vib. 

Vib. 

E. Gtr. 

E. Gtr. 

A. Bass 

72

Perc. 

Vib. 

Vib. 

E. Gtr. 

E. Gtr. 

A. Bass 

74 $\text{♩} = 136,004456$

Perc. 

Vib. 

Vib. 

E. Gtr. 

E. Gtr. 

A. Bass 

76

Perc. 

Vib. 

Vib. 

E. Gtr. 

E. Gtr. 

A. Bass 

78

Perc.

Vib.

Vib.

E. Gtr.

E. Gtr.

A. Bass

80

Perc.

Vib.

Vib.

E. Gtr.

E. Gtr.

A. Bass

82 $\text{♩} = 137,004440$ $\text{♩} = 138,002090$

Perc. 

E. Gtr. $\text{♩} = 137,004440$ $\text{♩} = 138,002090$ 

E. Gtr. 

A. Bass 

86


Perc. 

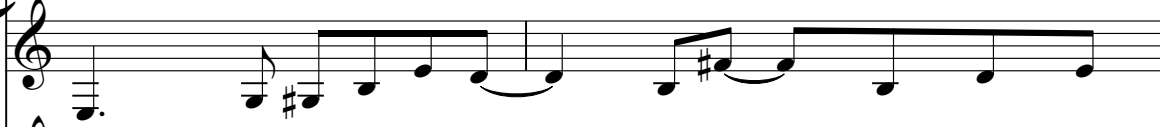
E. Gtr. 


E. Gtr. 

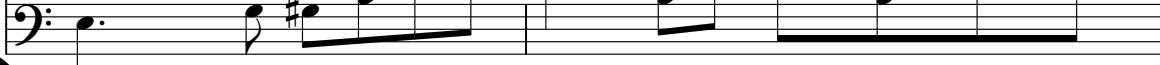
A. Bass 

88

Perc. 

E. Gtr. 

E. Gtr. 

A. Bass 

90

Perc. 

Vib. 

Vib. 

E. Gtr. 

E. Gtr. 

A. Bass 

92

Perc. 

Vib. 

Vib. 

E. Gtr. 

E. Gtr. 

A. Bass 

94

Perc. 

Vib. 

Vib. 

E. Gtr. 

E. Gtr. 

A. Bass 

96

Perc. 

Vib. 

Vib. 

E. Gtr. 

E. Gtr. 

A. Bass 

98

Perc.

Vib.

Vib.

E. Gtr.

E. Gtr.

A. Bass

6 6

100

Perc.

Vib.

Vib.

E. Gtr.

E. Gtr.

A. Bass

101

Perc.

Vib.

Vib.

E. Gtr.

E. Gtr.

A. Bass

The musical score for measures 101-103 is as follows:

- Measure 101:**
 - Perc.**: Starts with a double bar line. The first half contains a series of eighth notes with upward stems, followed by a triplet of eighth notes. The second half contains a quarter note, a dotted quarter note, and a half note.
 - Vib.**: Silent.
 - Vib.**: Silent.
 - E. Gtr. (Staff 1)**: Quarter note G4, eighth note A4, quarter note B4, quarter note A4, quarter note G4, quarter note F#4, quarter note E4, quarter note D4. Ends with a double bar line.
 - E. Gtr. (Staff 2)**: Chordal accompaniment. First half: G4, B4, D5 (quarter), G4, B4, D5 (quarter), G4, B4, D5 (quarter). Second half: G4, B4, D5 (half). Ends with a double bar line.
 - A. Bass**: Quarter note G3, quarter note A3, quarter note B3, quarter note A3, quarter note G3, quarter note F#3, quarter note E3, quarter note D3. Ends with a double bar line.
- Measure 102:**
 - Perc.**: Silent.
 - Vib.**: Silent.
 - Vib.**: Silent.
 - E. Gtr. (Staff 1)**: Silent.
 - E. Gtr. (Staff 2)**: Silent.
 - A. Bass**: Silent.
- Measure 103:**
 - Perc.**: Silent.
 - Vib.**: Silent.
 - Vib.**: Silent.
 - E. Gtr. (Staff 1)**: Silent.
 - E. Gtr. (Staff 2)**: Silent.
 - A. Bass**: Silent.

Percussion

Beatles - Day tripper

 $\text{♩} = 200,000000$ $\text{♩} = 137,004440$

2

7

10

12

14 $\text{♩} = 138,002090$

16

18

20

22

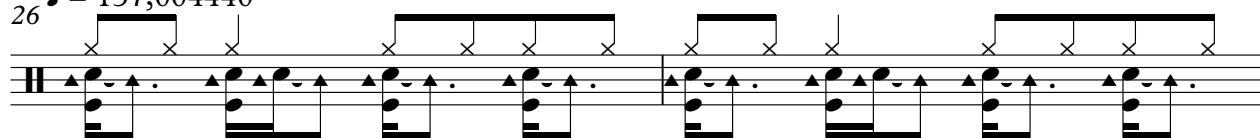
24

V.S.

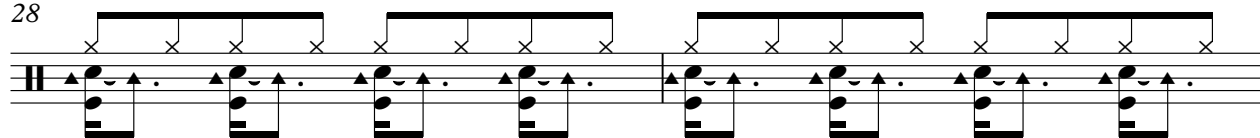
2

Percussion

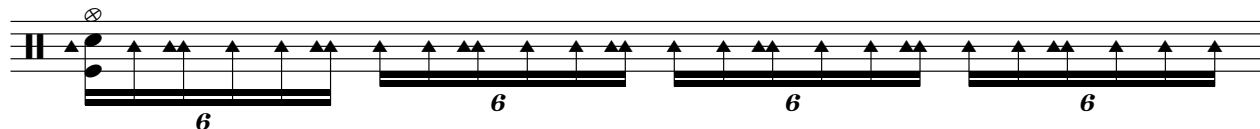
26 ♩ = 137,004440



28



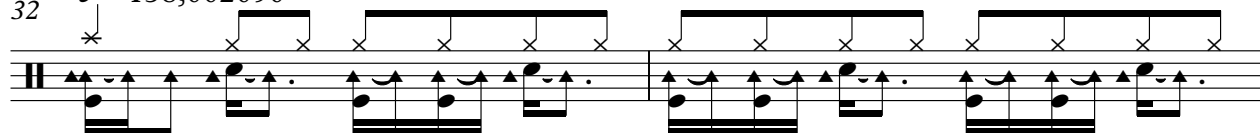
30



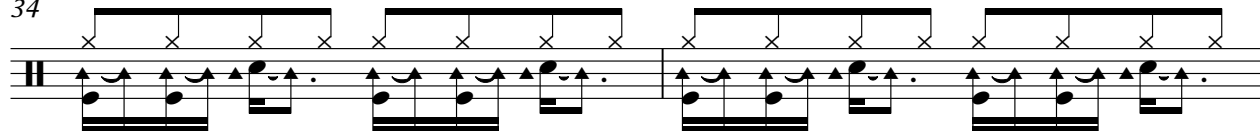
31



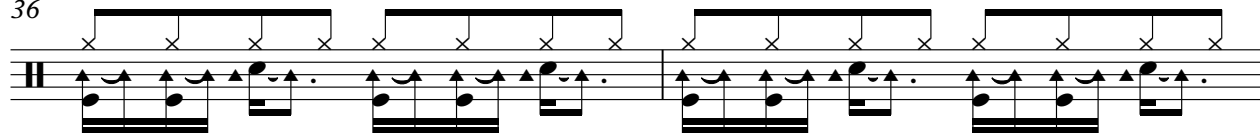
32 ♩ = 138,002090



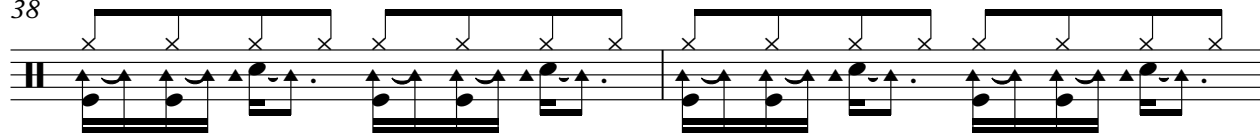
34



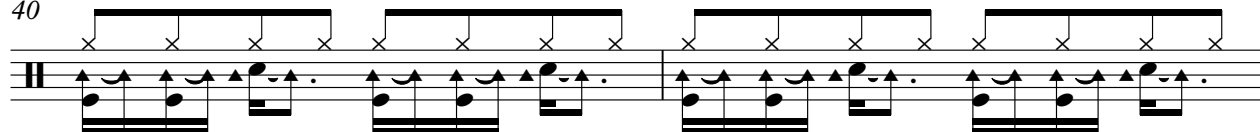
36



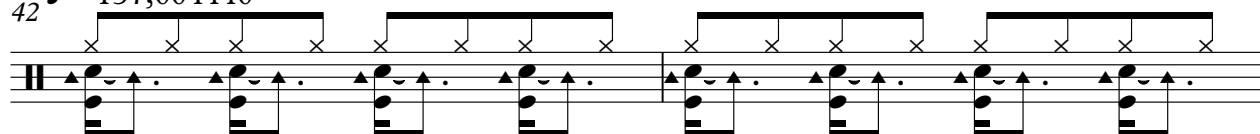
38



40



42 ♩ = 137,004440



44

46

48

50 ♩ = 136,004456

52

54 ♩ = 137,004440

56

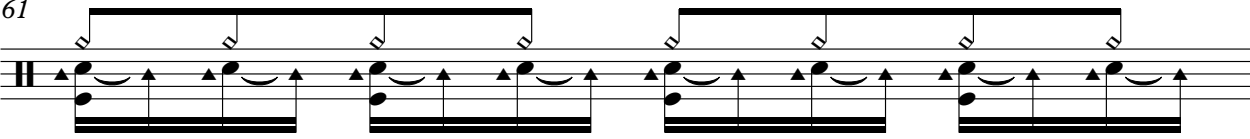
58

59

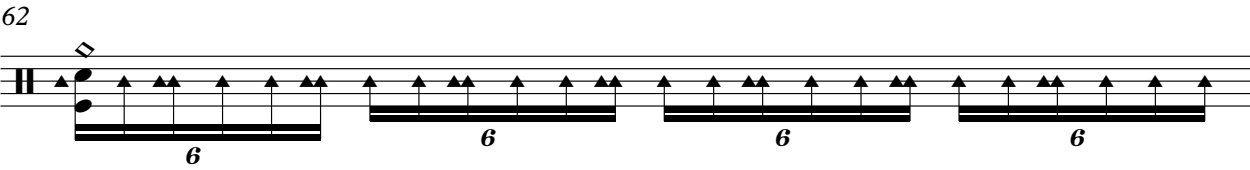
60 ♩ = 138,002090

V.S.

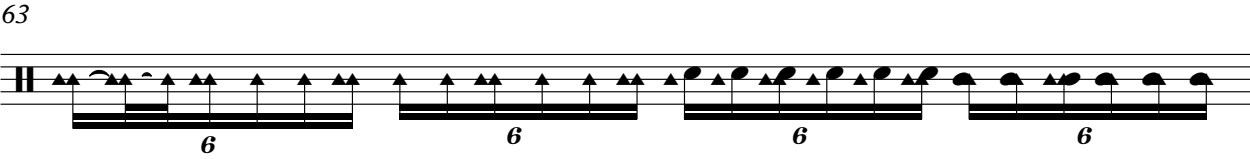
61



62

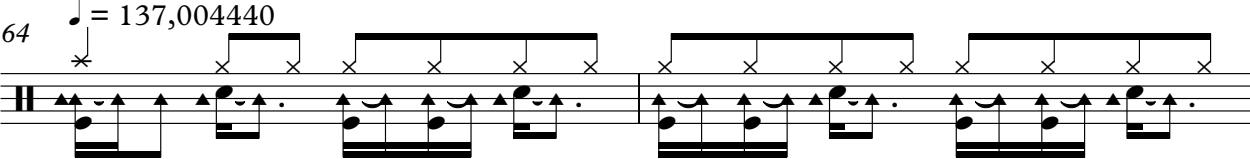


63

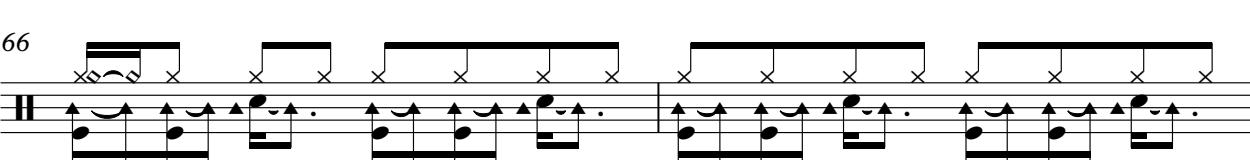


64

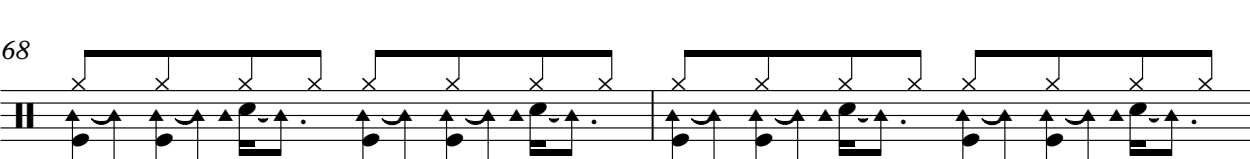
$\text{♩} = 137,004440$



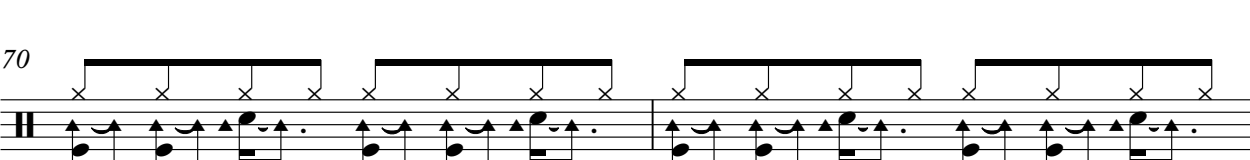
66



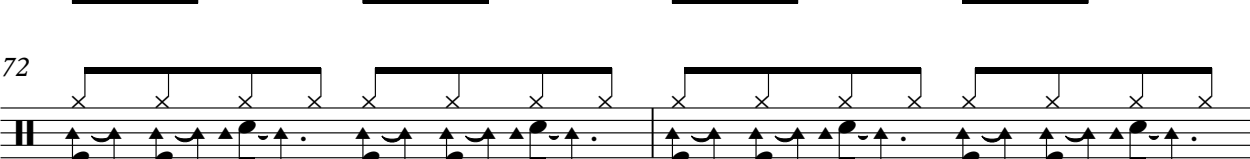
68



70

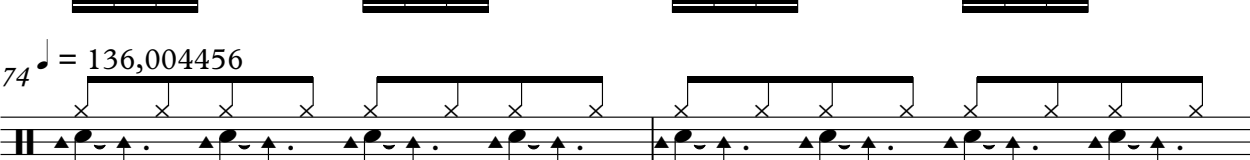


72

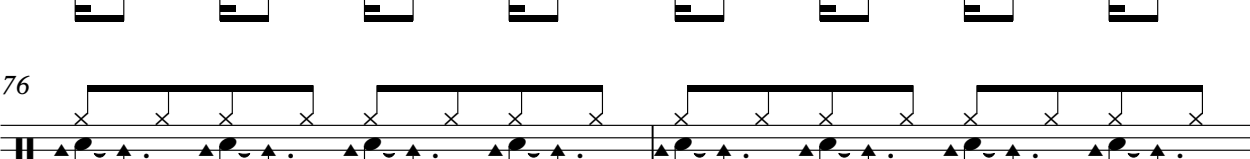


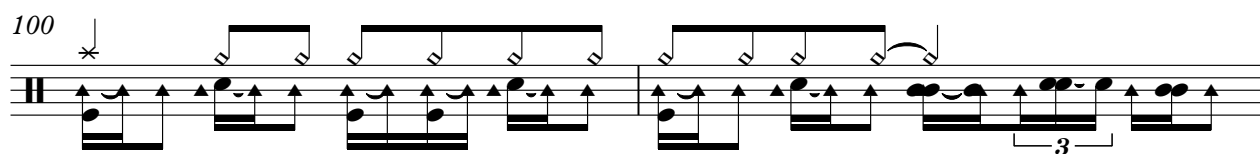
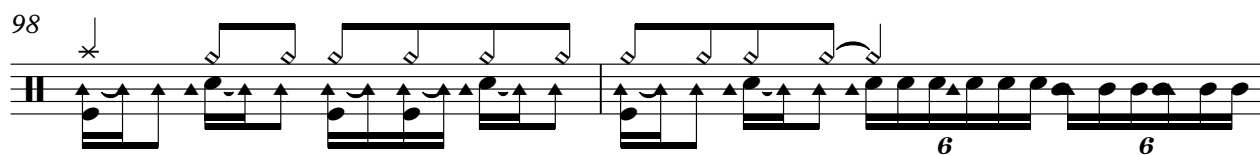
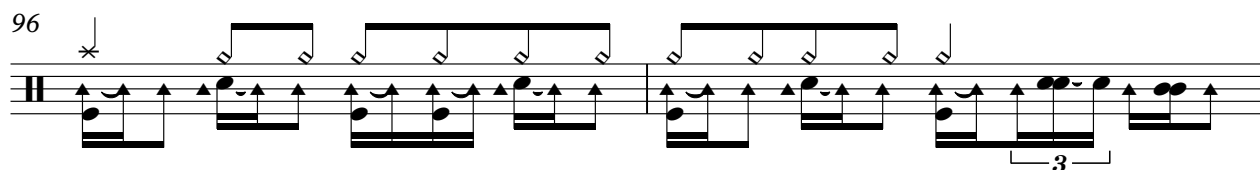
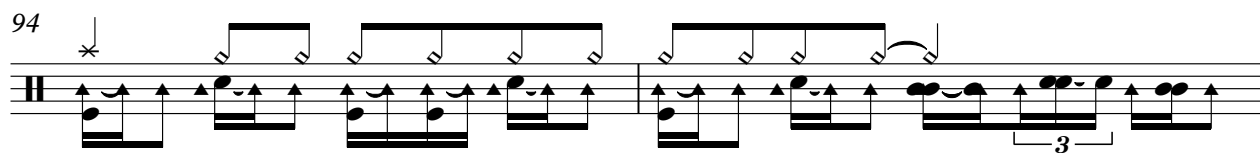
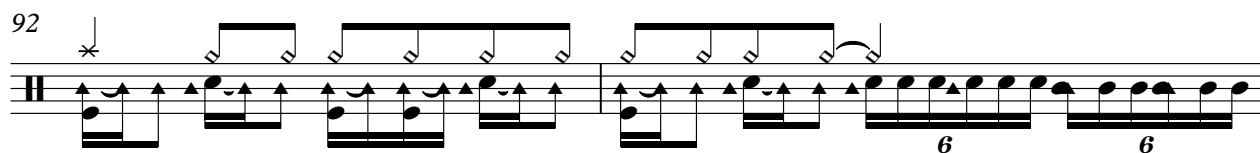
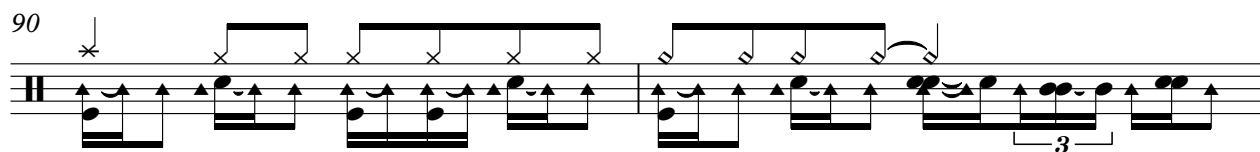
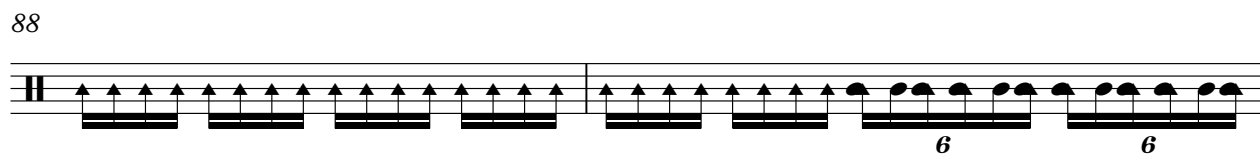
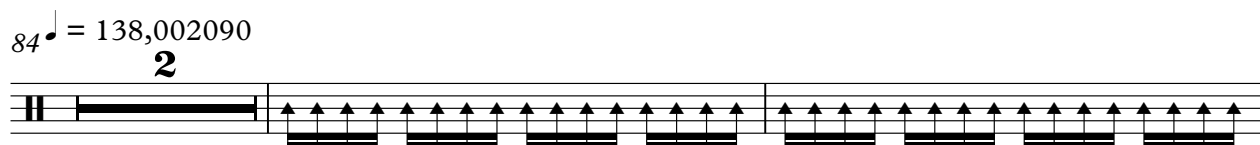
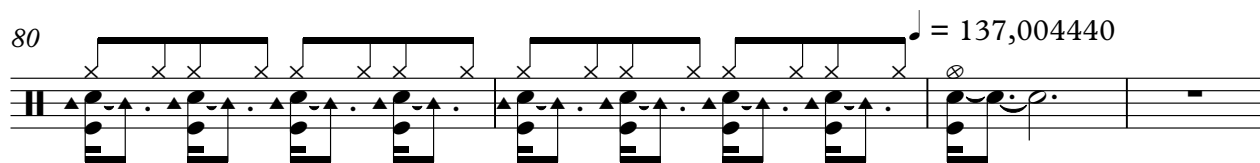
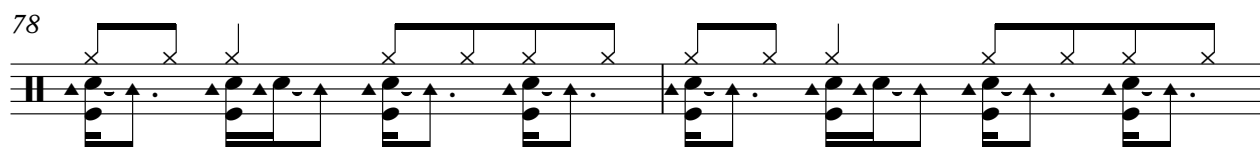
74

$\text{♩} = 136,004456$



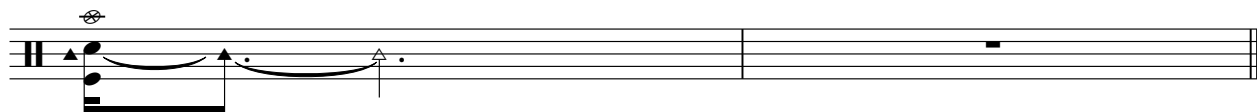
76





V.S.

102



Vibraphone

Beatles - Day tripper

♩ = 200,000000 ♩ = 137,004440

2

7 6 ♩ = 138,002090

17

22 ♩ = 137,004440

27 ♩ = 138,002090

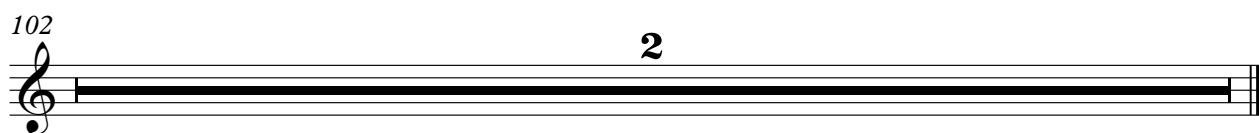
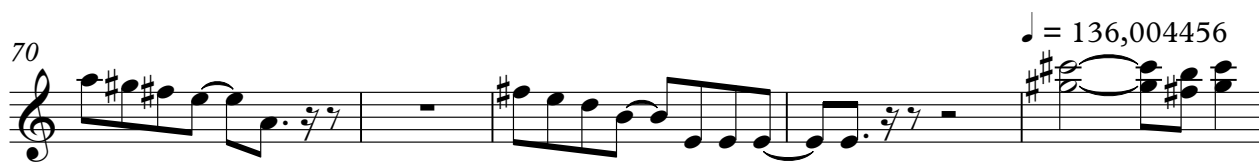
34

38 ♩ = 137,004440

43

48 ♩ = 136,004456 ♩ = 137,004440

57 ♩ = 138,002090 ♩ = 137,004440



Vibraphone

Beatles - Day tripper

♩ = 200,000000 ♩ = 137,004440
0283TRIP

7 6 ♩ = 138,002090

17

21

25 ♩ = 137,004440

30 ♩ = 138,002090

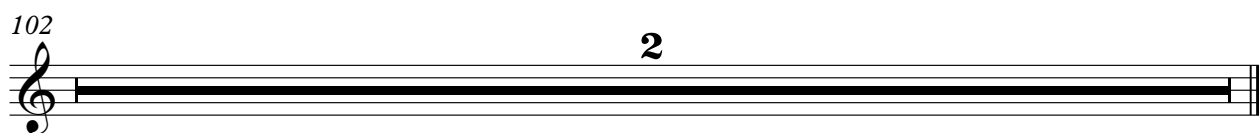
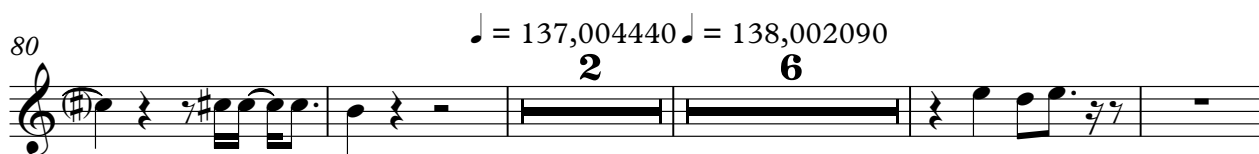
37

42 ♩ = 137,004440

47

50 ♩ = 136,004456 ♩ = 137,004440 ♩ = 138,002090 ♩ = 137,004440

4 6 4 2



♩ = 200,000000 ♩ = 137,004440

5

8

12 ♩ = 138,002090

16

20

24 ♩ = 137,004440

28

32 ♩ = 138,002090

36

V.S.

♩ = 137,004440



♩ = 136,004456



♩ = 137,004440



♩ = 138,002090



♩ = 137,004440



♩ = 136,004456



Electric Guitar

3

81 $\text{♩} = 137,004440$ $\text{♩} = 138,002090$

85

89

93

97

100

Electric Guitar

Beatles - Day tripper

♩ = 200,000000 ♩ = 137,004440

7

12

♩ = 138,002090

16

20

24

♩ = 137,004440

27

32 ♩ = 138,002090



♩ = 137,004440



♩ = 136,004456



♩ = 137,004440



60 ♩ = 138,002090



♩ = 137,004440



69

♩ = 200,000000 ♩ = 137,004440

7

♩ = 138,002090 ♩ = 137,004440 ♩ = 138,002090

6 12 6 10

42

♩ = 137,004440 ♩ = 136,004456 ♩ = 137,004440

8

56

♩ = 138,002090

2

64

♩ = 137,004440 ♩ = 136,004456 ♩ = 137,004440 ♩ = 138,002090

10 8 2 18

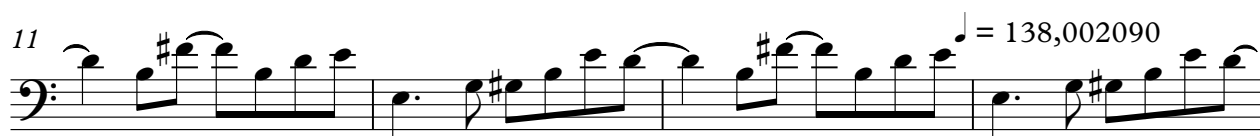
102

2

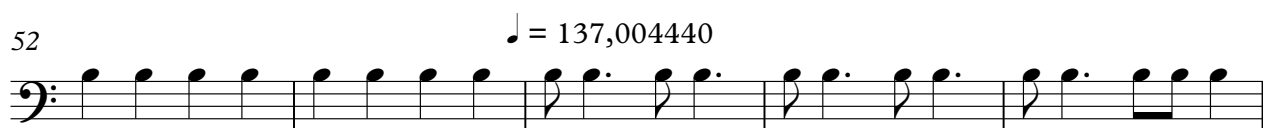
Acoustic Bass

Beatles - Day tripper

♩ = 200,000000 ♩ = 137,004440



V.S.



Acoustic Bass

3

