

Beatles - If I Fell

♩ = 105,001572

MELODY 1

E.GUITAR

A.GUITAR

MELODY 2

4

MELODY 1

E.GUITAR

A.GUITAR

MELODY 2

5

MELODY 1

E.GUITAR

A.GUITAR

MELODY 2

6

MELODY 1

E.GUITAR

A.GUITAR

MELODY 2

7

MELODY 1

E.GUITAR

A.GUITAR

MELODY 2

8

MELODY 1

E.GUITAR

A.GUITAR

MELODY 2

10

MELODY 1

DRUMS

E.GUITAR

A.GUITAR

BASS

MELODY 2

12

MELODY 1

DRUMS

E.GUITAR

A.GUITAR

BASS

MELODY 2

14

MELODY 1

DRUMS

E.GUITAR

A.GUITAR

BASS

MELODY 2

15

MELODY 1

DRUMS

E.GUITAR

A.GUITAR

BASS

MELODY 2

17

MELODY 1

DRUMS

E.GUITAR

A.GUITAR

BASS

MELODY 2

19

MELODY 1

DRUMS

E.GUITAR

A.GUITAR

BASS

MELODY 2

20

MELODY 1

DRUMS

E.GUITAR

A.GUITAR

BASS

MELODY 2

21

MELODY 1

DRUMS

E.GUITAR

A.GUITAR

BASS

MELODY 2

27

MELODY 1

DRUMS

E.GUITAR

A.GUITAR

BASS

MELODY 2

29

MELODY 1

DRUMS

E.GUITAR

A.GUITAR

BASS

MELODY 2

31

MELODY 1

DRUMS

E.GUITAR

A.GUITAR

BASS

MELODY 2

33

MELODY 1

DRUMS

E.GUITAR

A.GUITAR

BASS

MELODY 2

35

MELODY 1

DRUMS

E.GUITAR

A.GUITAR

BASS

MELODY 2

37

MELODY 1

DRUMS

E.GUITAR

A.GUITAR

BASS

MELODY 2

39

MELODY 1

DRUMS

E.GUITAR

A.GUITAR

BASS

MELODY 2

40

MELODY 1

DRUMS

E.GUITAR

A.GUITAR

BASS

MELODY 2

42

MELODY 1

DRUMS

E.GUITAR

A.GUITAR

BASS

MELODY 2

44

MELODY 1

DRUMS

E.GUITAR

A.GUITAR

BASS

MELODY 2

46

MELODY 1

DRUMS

E.GUITAR

A.GUITAR

BASS

MELODY 2

48

MELODY 1

DRUMS

E.GUITAR

A.GUITAR

BASS

MELODY 2

50

MELODY 1

DRUMS

E.GUITAR

A.GUITAR

BASS

MELODY 2

52

MELODY 1

DRUMS

E.GUITAR

A.GUITAR

BASS

MELODY 2

54

MELODY 1

DRUMS

E.GUITAR

A.GUITAR

BASS

MELODY 2

55

MELODY 1

DRUMS

E.GUITAR

A.GUITAR

BASS

MELODY 2

57

MELODY 1

DRUMS

E.GUITAR

A.GUITAR

BASS

MELODY 2

59

MELODY 1

DRUMS

E.GUITAR

A.GUITAR

BASS

MELODY 2

60

MELODY 1

DRUMS

E.GUITAR

A.GUITAR

BASS

MELODY 2

62

DRUMS

E.GUITAR

A.GUITAR

BASS

DRUMS

A drum staff with a double bar line at the beginning and a small symbol above it. The staff is empty for the rest of the measure.

E.GUITAR

An electric guitar staff with fret numbers 12, 13, and 10. The staff is empty for the rest of the measure.

A.GUITAR

An acoustic guitar staff with a treble clef and a slur. The staff contains a few notes and a 7 chord symbol.

BASS

A bass staff with a bass clef and a flat sign. The staff is empty for the rest of the measure.

Beatles - If I Fell

MELODY 1

♩ = 105,001572



V.S.

2

MELODY 1

56

Musical notation for MELODY 1, measures 56-58. The key signature is one sharp (F#). Measure 56 starts with a treble clef and a sharp sign. The melody consists of eighth notes and quarter notes. Measure 57 continues the melody with a quarter note and eighth notes. Measure 58 concludes the phrase with a quarter note and eighth notes.

59

Musical notation for MELODY 1, measures 59-60. The key signature is one sharp (F#). Measure 59 begins with a treble clef and a sharp sign, followed by a half note and quarter notes. Measure 60 features a triplet of eighth notes, indicated by a '3' above the notes, and ends with a double bar line.

DRUMS

Beatles - If I Fell

♩ = 105,001572

9

Drum notation for measures 9-12. Measure 9 starts with a 7-measure rest. Measures 10-12 feature a consistent drum pattern: a bass drum on the first half of the beat and a snare drum on the second half, with a hi-hat pattern of eighth notes.

Drum notation for measures 13-16. Measures 13-16 continue the drum pattern established in measures 10-12.

Drum notation for measures 17-20. Measures 17-20 continue the drum pattern established in measures 10-12.

Drum notation for measures 21-24. Measures 21-24 continue the drum pattern established in measures 10-12.

Drum notation for measures 25-28. Measures 25-28 continue the drum pattern established in measures 10-12.

Drum notation for measures 29-32. Measures 29-32 continue the drum pattern established in measures 10-12.

Drum notation for measures 33-36. Measures 33-36 continue the drum pattern established in measures 10-12.

Drum notation for measures 37-40. Measures 37-40 continue the drum pattern established in measures 10-12.

Drum notation for measures 41-44. Measures 41-44 continue the drum pattern established in measures 10-12.

Drum notation for measures 45-48. Measures 45-48 continue the drum pattern established in measures 10-12.

V.S.

2

DRUMS

49

Drum notation for measures 49-52. The notation consists of two staves. The top staff uses 'x' marks to represent hits on a drum, with beams indicating rhythmic patterns. The bottom staff shows the corresponding bass drum and snare drum parts with standard musical notation, including stems, flags, and beams.

53

Drum notation for measures 53-56. The notation consists of two staves. The top staff uses 'x' marks to represent hits on a drum, with beams indicating rhythmic patterns. The bottom staff shows the corresponding bass drum and snare drum parts with standard musical notation, including stems, flags, and beams.

57

Drum notation for measures 57-60. The notation consists of two staves. The top staff uses 'x' marks to represent hits on a drum, with beams indicating rhythmic patterns. The bottom staff shows the corresponding bass drum and snare drum parts with standard musical notation, including stems, flags, and beams.

60

Drum notation for measures 60-63. The notation consists of two staves. The top staff uses 'x' marks to represent hits on a drum, with beams indicating rhythmic patterns. The bottom staff shows the corresponding bass drum and snare drum parts with standard musical notation, including stems, flags, and beams. The notation ends with a double bar line.

Beatles - If I Fell

E.GUITAR

♩ = 105,001572

D			4	3	3	3	2	2	2	4	4	4
T			5	5	5	5	0	0	0	4	4	4
A			4	3	3	3	6	6	6	4	4	4
D			4	3	3	7	2	2	2	4	4	4
B			2	1			0	0	0	0	4	4
D										11		

7

T	4	0	0	3	3	0	0	3	3			
A	5		1			1		3	3			
B	4	4	3	3	3	3	1	1	3			
B	2	2	2	1	3	3	6	3	1	3	0	0
						8	1			0	1	0
										1	3	1
											1	1

12

T	0	0										
A	0	3	3	0	3	3	0					
B												

16

T	0	0										
A	0	3	3	0	3	3	0					
B												

20

T												
A	1	1	1	3	3	3	0	1	0	1	0	1
B												

24

T												
A												
B												

28

T												
A												
B												

33

T												
A												
B												

38

T												
A												
B												

43

T												
A												
B												

V.S.

2
48

E.GUITAR

Guitar tab for measure 48. The staff shows strings T, A, and B. The B string has a sequence of notes: 1 1 4 1 1 1 4 1. The A string has notes: 0 0 0 0. The T string has notes: 3 1 1 1 1 1. The next measure has B string notes: 3 1 1 1 1 1 and A string notes: 0 0 1 0. The final measure has B string notes: 0 3 3 0 3 3 and A string notes: 0 0.

53

Guitar tab for measure 53. The staff shows strings T, A, and B. The B string has notes: 5 3 3 3 3 3. The A string has notes: 0 0. The T string has notes: 3 3 3 3 3. The next measure has B string notes: 3 3 3 3 3 and A string notes: 0 1 0 1 3 1 1. The final measure has B string notes: 5 3 3 3 3 3 and A string notes: 0 0.

58

Guitar tab for measure 58. The staff shows strings T, A, and B. The B string has notes: 3 3 3 3 3 3. The A string has notes: 3 3 3 3. The T string has notes: 0 1 0 1 1 1 0 1. The next measure has B string notes: 1 1 1 1 1 1 1 and A string notes: 1 1 1 1 1 1.

61

Guitar tab for measure 61. The staff shows strings T, A, and B. The B string has notes: 0 1 0 1 0 3. The A string has notes: 1 1 3. The T string has notes: 12 13 10. The final measure has B string notes: 12 13 10.

Beatles - If I Fell

A. GUITAR

♩ = 105,001572

2

4

6

7

8

10

12

14

16

18

V.S.

A.GUITAR

20



22



24



26



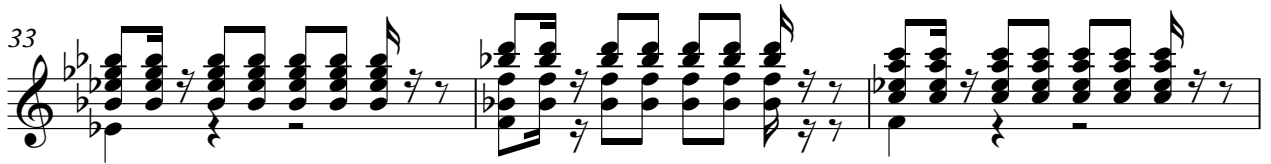
28



30



33



36



39



41



43

45

48

51

54

56

58

60

62

BASS

Beatles - If I Fell

♩ = 105,001572
10



15



20



25



30



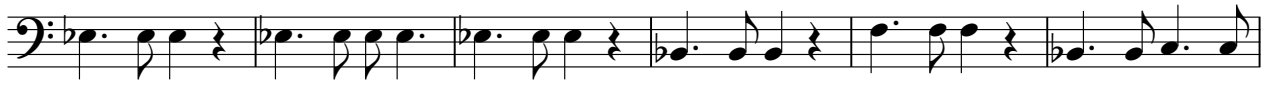
36



41



46



52



57



V.S.

2

BASS

61



Beatles - If I Fell

MELODY 2

♩ = 105,001572

6

11

16

21

26

31

36

41

46

V.S.

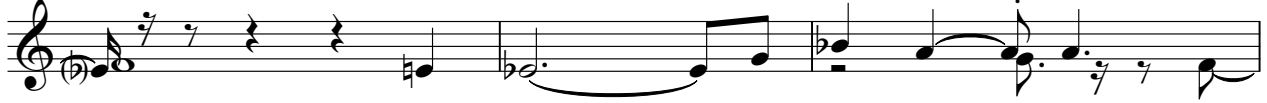
2

MELODY 2

51



56



59

