

Beatles - Matchbox

♩ = 161,000351

DRUMS

MELODY

CLEAN GTR

CLEAN GTR

ACOU BASS

A.PIANO 1

5

DRUMS

MELODY

CLEAN GTR

CLEAN GTR

ACOU BASS

A.PIANO 1

7

DRUMS

MELODY

CLEAN GTR

CLEAN GTR

ACOU BASS

A.PIANO 1

9

DRUMS

MELODY

CLEAN GTR

CLEAN GTR

ACOU BASS

A.PIANO 1

11

DRUMS

MELODY

CLEAN GTR

CLEAN GTR

ACOU BASS

A.PIANO 1

13

DRUMS

MELODY

CLEAN GTR

CLEAN GTR

ACOU BASS

A.PIANO 1

15

DRUMS

MELODY

CLEAN GTR

CLEAN GTR

ACOU BASS

A.PIANO 1

17

DRUMS

MELODY

CLEAN GTR

CLEAN GTR

ACOU BASS

A.PIANO 1

19

DRUMS

MELODY

CLEAN GTR

CLEAN GTR

ACOU BASS

A.PIANO 1

21

DRUMS

MELODY

CLEAN GTR

CLEAN GTR

ACOU BASS

A.PIANO 1

23

DRUMS

MELODY

CLEAN GTR

CLEAN GTR

ACOU BASS

A.PIANO 1

25

DRUMS

MELODY

CLEAN GTR

CLEAN GTR

ACOU BASS

A.PIANO 1

27

DRUMS

MELODY

CLEAN GTR

CLEAN GTR

ACOU BASS

A.PIANO 1

29

DRUMS

MELODY

CLEAN GTR

CLEAN GTR

ACOU BASS

A.PIANO 1

31

DRUMS

MELODY

CLEAN GTR

CLEAN GTR

ACOU BASS

A.PIANO 1

33

DRUMS

MELODY

CLEAN GTR

CLEAN GTR

ACOU BASS

A.PIANO 1

35

DRUMS

MELODY

CLEAN GTR

CLEAN GTR

ACOU BASS

A.PIANO 1

37

DRUMS

MELODY

CLEAN GTR

CLEAN GTR

ACOU BASS

A.PIANO 1

39

DRUMS

MELODY

CLEAN GTR

CLEAN GTR

ACOU BASS

A.PIANO 1

41

DRUMS

MELODY

CLEAN GTR

CLEAN GTR

ACOU BASS

A.PIANO 1

43

DRUMS

CLEAN GTR

CLEAN GTR

ACOU BASS

A.PIANO 1

45

DRUMS

CLEAN GTR

CLEAN GTR

ACOU BASS

A.PIANO 1

47

DRUMS

CLEAN GTR

CLEAN GTR

ACOU BASS

A.PIANO 1

49

DRUMS

CLEAN GTR

CLEAN GTR

ACOU BASS

A.PIANO 1

51

DRUMS

CLEAN GTR

CLEAN GTR

ACOU BASS

A.PIANO 1

53

DRUMS

MELODY

CLEAN GTR

CLEAN GTR

ACOU BASS

A.PIANO 1

55

DRUMS

MELODY

CLEAN GTR

CLEAN GTR

ACOU BASS

A.PIANO 1

57

DRUMS

MELODY

CLEAN GTR

CLEAN GTR

ACOU BASS

A.PIANO 1

59

DRUMS

MELODY

CLEAN GTR

CLEAN GTR

ACOU BASS

A.PIANO 1

61

DRUMS

MELODY

CLEAN GTR

CLEAN GTR

ACOU BASS

A.PIANO 1

63

DRUMS

MELODY

CLEAN GTR

CLEAN GTR

ACOU BASS

A.PIANO 1

65

DRUMS

MELODY

CLEAN GTR

CLEAN GTR

ACOU BASS

A.PIANO 1

67

DRUMS

MELODY

CLEAN GTR

CLEAN GTR

ACOU BASS

A.PIANO 1

68

DRUMS

MELODY

CLEAN GTR

CLEAN GTR

ACOU BASS

A.PIANO 1

69

DRUMS

MELODY

CLEAN GTR

CLEAN GTR

ACOU BASS

A.PIANO 1

70

DRUMS

MELODY

CLEAN GTR

CLEAN GTR

ACOU BASS

A.PIANO 1

71

DRUMS

MELODY

CLEAN GTR

CLEAN GTR

ACOU BASS

A.PIANO 1

72

DRUMS

MELODY

CLEAN GTR

CLEAN GTR

ACOU BASS

A.PIANO 1

73

DRUMS

MELODY

CLEAN GTR

CLEAN GTR

ACOU BASS

A.PIANO 1

74

DRUMS

MELODY

CLEAN GTR

CLEAN GTR

ACOU BASS

A.PIANO 1

75

DRUMS

MELODY

CLEAN GTR

CLEAN GTR

ACOU BASS

A.PIANO 1

76

DRUMS

MELODY

CLEAN GTR

CLEAN GTR

ACOU BASS

A.PIANO 1

77

DRUMS

MELODY

CLEAN GTR

CLEAN GTR

ACOU BASS

A.PIANO 1

3

Detailed description: This block contains the musical notation for measures 77 and 78. It features six staves: DRUMS, MELODY, CLEAN GTR, CLEAN GTR, ACOU BASS, and A.PIANO 1. Measure 77 shows a drum pattern with eighth notes and a triplet of eighth notes. The melody has a half note followed by a quarter rest. The guitar parts consist of chords and single notes. The acoustic bass line has a rhythmic pattern of eighth notes. The piano part features a complex texture with many sixteenth notes and chords.

79

CLEAN GTR

CLEAN GTR

ACOU BASS

A.PIANO 1

Detailed description: This block contains the musical notation for measures 79, 80, and 81. It features four staves: CLEAN GTR, CLEAN GTR, ACOU BASS, and A.PIANO 1. Measure 79 shows two guitar staves with sustained chords. The acoustic bass line has a half note followed by a quarter rest. The piano part has a complex texture with many sixteenth notes and chords. Measures 80 and 81 show the continuation of these parts, with the guitar parts ending in sustained chords and the piano part ending with a complex texture.

Beatles - Matchbox

DRUMS

♩ = 161,000351

2

7

11

15

19

23

27

31

35

39

V.S.

DRUMS

43

Musical notation for drum part 43-46. The notation is on a five-line staff with a double bar line at the beginning. It features a consistent rhythmic pattern of eighth notes with 'x' marks above them, and a bass line of quarter notes.

47

Musical notation for drum part 47-50. The notation is on a five-line staff with a double bar line at the beginning. It features a consistent rhythmic pattern of eighth notes with 'x' marks above them, and a bass line of quarter notes.

51

Musical notation for drum part 51-54. The notation is on a five-line staff with a double bar line at the beginning. It features a consistent rhythmic pattern of eighth notes with 'x' marks above them, and a bass line of quarter notes.

55

Musical notation for drum part 55-58. The notation is on a five-line staff with a double bar line at the beginning. It features a consistent rhythmic pattern of eighth notes with 'x' marks above them, and a bass line of quarter notes.

59

Musical notation for drum part 59-62. The notation is on a five-line staff with a double bar line at the beginning. It features a consistent rhythmic pattern of eighth notes with 'x' marks above them, and a bass line of quarter notes.

63

Musical notation for drum part 63-66. The notation is on a five-line staff with a double bar line at the beginning. It features a consistent rhythmic pattern of eighth notes with 'x' marks above them, and a bass line of quarter notes.

67

Musical notation for drum part 67-70. The notation is on a five-line staff with a double bar line at the beginning. It features a consistent rhythmic pattern of eighth notes with 'x' marks above them, and a bass line of quarter notes.

71

Musical notation for drum part 71-74. The notation is on a five-line staff with a double bar line at the beginning. It features a consistent rhythmic pattern of eighth notes with 'x' marks above them, and a bass line of quarter notes.

75

Musical notation for drum part 75-76. The notation is on a five-line staff with a double bar line at the beginning. It features a consistent rhythmic pattern of eighth notes with 'x' marks above them, and a bass line of quarter notes.

77

Musical notation for drum part 77-78. The notation is on a five-line staff with a double bar line at the beginning. It features a consistent rhythmic pattern of eighth notes with 'x' marks above them, and a bass line of quarter notes. The final measure includes a triplet of eighth notes marked with a '3' and a final measure with a whole note marked with a '3'.

Beatles - Matchbox

MELODY

♩ = 161,000351

4

9

14

18

22

26

30

34

38

41

11

54

3

58

3

62

66

70

75

4

♩ = 161,000351

5

8

11

14

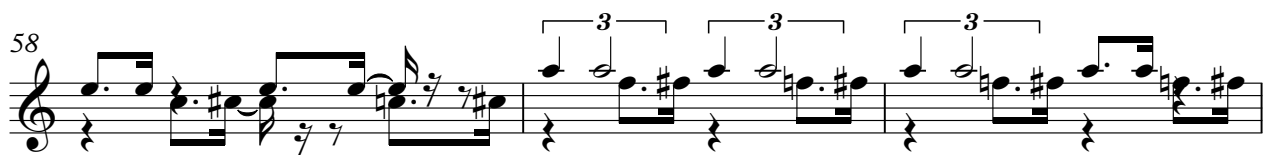
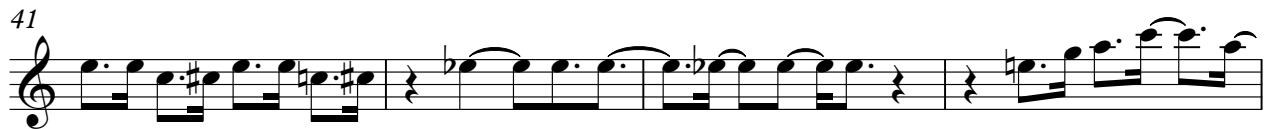
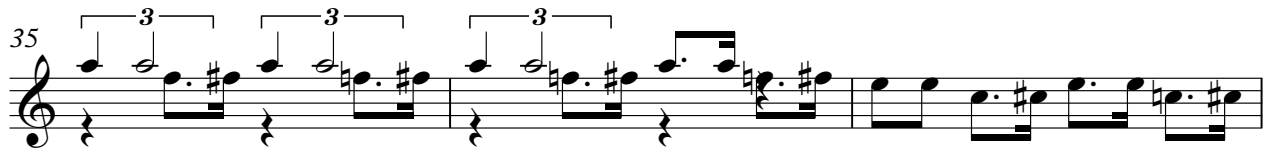
17

20

23

26

29



64



67



70



73



76



♩ = 161,000351

6

9

13

17

21

25

29

33

37

41



44



47



50



54



57



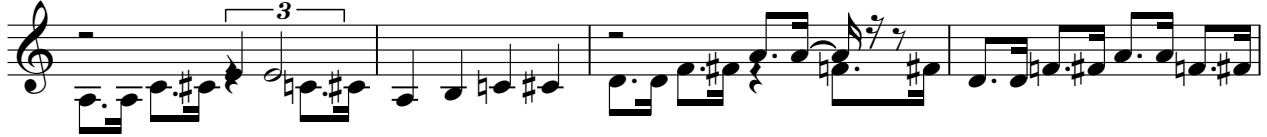
61



65



69



73



77



ACOU BASS

Beatles - Matchbox

♩ = 161,000351

3

8

13

3

18

23

28

33

38

3

43

49

V.S.

55



60



65



70



75



78



A.PIANO 1

Beatles - Matchbox

♩ = 161,000351

3

7

10

13

15

17

19

21

24

27

V.S.

Musical score for A.PIANO 1, page 2, measures 30-51. The score is written in treble clef with a key signature of one sharp (F#). The music features a complex rhythmic pattern with frequent triplets and sixteenth-note runs. Measure numbers 30, 32, 35, 38, 40, 42, 45, 47, 49, and 51 are indicated at the beginning of their respective staves. A large number '3' is placed above the first staff, indicating a triplet. The notation includes various note values, rests, and dynamic markings.

Musical score for guitar, measures 53-74. The score is written in treble clef with a key signature of one sharp (F#). It features a complex rhythmic pattern with many sixteenth notes and rests. Measure 53 starts with a triplet of eighth notes. Measure 56 has a triplet of eighth notes. Measure 68 has a triplet of eighth notes. Measure 72 has a triplet of eighth notes. Measure 74 has a triplet of eighth notes. The score includes various musical notations such as slurs, ties, and dynamic markings. The piece concludes with a double bar line at the end of measure 74.

4

75

A.PIANO 1

6

6

76

77

2