

The Who - Summertime Blues

♩ = 155,002716

DRUMS

STEEL GTR

DISTORTION

CLEAN GTR

NYLON GTR

PICK BASS

5

DRUMS

STEEL GTR

CLEAN GTR

NYLON GTR

PICK BASS

7

DRUMS

STEEL GTR

CLEAN GTR

NYLON GTR

PICK BASS

9

DRUMS

STEEL GTR

DISTORTION

CLEAN GTR

NYLON GTR

PICK BASS

11

DRUMS

STEEL GTR

DISTORTION

CLEAN GTR

NYLON GTR

PICK BASS

Detailed description: This system contains measures 11 and 12. The drums play a consistent pattern of eighth notes with cymbals. The steel guitar is silent in measure 11 and plays a series of chords in measure 12. The distortion guitar plays a sequence of eighth notes in measure 11 and is silent in measure 12. The clean guitar is silent in measure 11 and plays chords in measure 12. The nylon guitar is silent in measure 11 and plays chords in measure 12. The pick bass plays a steady eighth-note line throughout both measures.

13

DRUMS

STEEL GTR

DISTORTION

CLEAN GTR

NYLON GTR

PICK BASS

Detailed description: This system contains measures 13 and 14. The drums continue their eighth-note pattern. The steel guitar plays chords in measure 13 and is silent in measure 14. The distortion guitar is silent in measure 13 and plays eighth notes in measure 14. The clean guitar plays chords in measure 13 and is silent in measure 14. The nylon guitar plays chords in measure 13, including a triplet of eighth notes, and is silent in measure 14. The pick bass continues its eighth-note line.

15

DRUMS

STEEL GTR

DISTORTION

CLEAN GTR

NYLON GTR

PICK BASS

17

DRUMS

STEEL GTR

DISTORTION

CLEAN GTR

NYLON GTR

PICK BASS

19

DRUMS

STEEL GTR

DISTORTION

CLEAN GTR

NYLON GTR

PICK BASS

21

DRUMS

STEEL GTR

DISTORTION

CLEAN GTR

NYLON GTR

PICK BASS

23

DRUMS

STEEL GTR

DISTORTION

CLEAN GTR

NYLON GTR

PICK BASS

26

DRUMS

DISTORTION

PICK BASS

28

DRUMS

STEEL GTR

CLEAN GTR

NYLON GTR

PICK BASS

30

DRUMS

STEEL GTR

DISTORTION

CLEAN GTR

NYLON GTR

PICK BASS

32

DRUMS

DISTORTION

PICK BASS

34

DRUMS

STEEL GTR

DISTORTION

CLEAN GTR

NYLON GTR

PICK BASS

36

DRUMS

DISTORTION

PICK BASS

38

DRUMS

STEEL GTR

DISTORTION

CLEAN GTR

NYLON GTR

PICK BASS

40

DRUMS

STEEL GTR

DISTORTION

CLEAN GTR

NYLON GTR

PICK BASS

42

DRUMS

STEEL GTR

DISTORTION

CLEAN GTR

NYLON GTR

PICK BASS

44

DRUMS

STEEL GTR

DISTORTION

CLEAN GTR

NYLON GTR

PICK BASS

46

DRUMS

STEEL GTR

DISTORTION

CLEAN GTR

NYLON GTR

PICK BASS

Detailed description: This system of musical notation covers measures 46, 47, and 48. It features six staves: DRUMS (top), STEEL GTR, DISTORTION, CLEAN GTR, NYLON GTR, and PICK BASS (bottom). The time signature changes from 2/4 to 4/4 between measures 46 and 47. The DRUMS staff shows a complex pattern of hits and rests. The STEEL GTR staff has a few notes in measure 46. The DISTORTION staff has a melodic line starting in measure 47. The CLEAN GTR and NYLON GTR staves have minimal activity. The PICK BASS staff has a steady bass line.

49

DRUMS

STEEL GTR

CLEAN GTR

NYLON GTR

PICK BASS

Detailed description: This system of musical notation covers measures 49, 50, and 51. It features five staves: DRUMS (top), STEEL GTR, CLEAN GTR, NYLON GTR, and PICK BASS (bottom). The time signature is 4/4. The DRUMS staff shows a consistent drum pattern. The STEEL GTR staff has a melodic line starting in measure 50. The CLEAN GTR and NYLON GTR staves have chordal accompaniment. The PICK BASS staff has a steady bass line.

51

DRUMS

STEEL GTR

CLEAN GTR

NYLON GTR

PICK BASS

53

DRUMS

STEEL GTR

DISTORTION

CLEAN GTR

NYLON GTR

PICK BASS

55

DRUMS

STEEL GTR

DISTORTION

CLEAN GTR

NYLON GTR

PICK BASS

Detailed description: This system covers measures 55 and 56. The drums play a consistent pattern of eighth notes with accents. The steel guitar is silent in measure 55 and plays a series of chords in measure 56. The distortion guitar plays a melodic line in measure 55 and is silent in measure 56. The clean guitar and nylon guitar play chords in measure 56. The pick bass plays a steady eighth-note line.

57

DRUMS

STEEL GTR

DISTORTION

CLEAN GTR

NYLON GTR

PICK BASS

Detailed description: This system covers measures 57 and 58. The drums continue their pattern. The steel guitar plays chords in measure 57 and is silent in measure 58. The distortion guitar plays a melodic line in measure 57 and continues in measure 58. The clean guitar plays chords in measure 57 and is silent in measure 58. The nylon guitar plays chords in measure 57, including a triplet, and is silent in measure 58. The pick bass continues its eighth-note line.

59

DRUMS

STEEL GTR

DISTORTION

CLEAN GTR

NYLON GTR

PICK BASS

61

DRUMS

STEEL GTR

DISTORTION

CLEAN GTR

NYLON GTR

PICK BASS

63

DRUMS

STEEL GTR

DISTORTION

CLEAN GTR

NYLON GTR

PICK BASS

Detailed description: This system of musical notation covers measures 63 and 64. The DRUMS staff shows a complex pattern of hits, including snare and tom-tom sounds. The STEEL GTR staff features a melodic line with a sharp sign and a slur. The DISTORTION staff has a rhythmic pattern of eighth notes with slurs. The CLEAN GTR staff has a simple melodic line. The NYLON GTR staff has a melodic line with a sharp sign. The PICK BASS staff has a steady eighth-note bass line.

65

DRUMS

STEEL GTR

DISTORTION

CLEAN GTR

NYLON GTR

PICK BASS

Detailed description: This system of musical notation covers measures 65 and 66. The DRUMS staff shows a pattern of hits, including snare and tom-tom sounds. The STEEL GTR staff features a melodic line with a sharp sign and a slur. The DISTORTION staff has a rhythmic pattern of eighth notes with slurs. The CLEAN GTR staff has a simple melodic line. The NYLON GTR staff has a melodic line with a sharp sign. The PICK BASS staff has a steady eighth-note bass line.

67

DRUMS

STEEL GTR

DISTORTION

CLEAN GTR

NYLON GTR

PICK BASS

69

DRUMS

DISTORTION

PICK BASS

71

DRUMS

STEEL GTR

CLEAN GTR

NYLON GTR

PICK BASS

73

DRUMS

STEEL GTR

CLEAN GTR

NYLON GTR

PICK BASS

75

DRUMS

STEEL GTR

CLEAN GTR

NYLON GTR

PICK BASS

77

DRUMS

STEEL GTR

CLEAN GTR

NYLON GTR

PICK BASS

79

DRUMS

STEEL GTR

CLEAN GTR

NYLON GTR

PICK BASS

80

DRUMS

STEEL GTR

CLEAN GTR

NYLON GTR

PICK BASS

Detailed description of the musical score: The score is arranged in five staves. The top staff is for Drums, showing a complex rhythmic pattern with various note values and rests. The second staff is for Steel Guitar, featuring a melodic line with slurs and accents. The third staff is for Clean Guitar, with a similar melodic line and some chordal textures. The fourth staff is for Nylon Guitar, providing a harmonic accompaniment with chords and single notes. The bottom staff is for Pick Bass, showing a steady eighth-note bass line that changes in the final measure.

DRUMS

The Who - Summertime Blues

♩ = 155,002716

2

6

9

12

15

18

22

DRUMS

26

Musical notation for drum set, measures 26-28. Measure 26: Snare, Hi-hat, Bass Drum. Measure 27: Snare, Hi-hat, Bass Drum. Measure 28: Snare, Hi-hat, Bass Drum, cymbal.

29

Musical notation for drum set, measures 29-31. Measure 29: Snare, Hi-hat, Bass Drum. Measure 30: Snare, Hi-hat, Bass Drum. Measure 31: Snare, Hi-hat, Bass Drum, cymbal.

32

Musical notation for drum set, measures 32-34. Measure 32: Snare, Hi-hat, Bass Drum. Measure 33: Snare, Hi-hat, Bass Drum. Measure 34: Snare, Hi-hat, Bass Drum, cymbal.

35

Musical notation for drum set, measures 35-37. Measure 35: Snare, Hi-hat, Bass Drum. Measure 36: Snare, Hi-hat, Bass Drum. Measure 37: Snare, Hi-hat, Bass Drum, cymbal.

38

Musical notation for drum set, measures 38-40. Measure 38: Snare, Hi-hat, Bass Drum. Measure 39: Snare, Hi-hat, Bass Drum. Measure 40: Snare, Hi-hat, Bass Drum, cymbal.

41

Musical notation for drum set, measures 41-43. Measure 41: Snare, Hi-hat, Bass Drum. Measure 42: Snare, Hi-hat, Bass Drum, cymbal. Measure 43: Snare, Hi-hat, Bass Drum.

45

Musical notation for drum set, measures 45-48. Measure 45: Snare, Hi-hat, Bass Drum. Measure 46: Snare, Hi-hat, Bass Drum. Measure 47: Snare, Hi-hat, Bass Drum, cymbal. Measure 48: Snare, Hi-hat, Bass Drum.

49

Musical notation for drum set, measures 49-51. Measure 49: Snare, Hi-hat, Bass Drum. Measure 50: Snare, Hi-hat, Bass Drum, cymbal. Measure 51: Snare, Hi-hat, Bass Drum.

52

Musical notation for drum set, measures 52-54. Measure 52: Snare, Hi-hat, Bass Drum. Measure 53: Snare, Hi-hat, Bass Drum. Measure 54: Snare, Hi-hat, Bass Drum, cymbal.

55

Musical notation for drum set, measures 55-57. Measure 55: Snare, Hi-hat, Bass Drum. Measure 56: Snare, Hi-hat, Bass Drum. Measure 57: Snare, Hi-hat, Bass Drum, cymbal.

DRUMS

58

Musical notation for drum part 58, consisting of a single staff with a double bar line on the left. The notation includes various rhythmic patterns with stems and beams, and 'x' marks indicating specific drum sounds.

61

Musical notation for drum part 61, consisting of a single staff with a double bar line on the left. The notation includes various rhythmic patterns with stems and beams, and 'x' marks indicating specific drum sounds.

64

Musical notation for drum part 64, consisting of a single staff with a double bar line on the left. The notation includes various rhythmic patterns with stems and beams, and 'x' marks indicating specific drum sounds.

68

Musical notation for drum part 68, consisting of a single staff with a double bar line on the left. The notation includes various rhythmic patterns with stems and beams, and 'x' marks indicating specific drum sounds.

72

Musical notation for drum part 72, consisting of a single staff with a double bar line on the left. The notation includes various rhythmic patterns with stems and beams, and 'x' marks indicating specific drum sounds.

75

Musical notation for drum part 75, consisting of a single staff with a double bar line on the left. The notation includes various rhythmic patterns with stems and beams, and 'x' marks indicating specific drum sounds.

78

Musical notation for drum part 78, consisting of a single staff with a double bar line on the left. The notation includes various rhythmic patterns with stems and beams, and 'x' marks indicating specific drum sounds.

80

Musical notation for drum part 80, consisting of a single staff with a double bar line on the left. The notation includes various rhythmic patterns with stems and beams, and 'x' marks indicating specific drum sounds.

The Who - Summertime Blues

STEEL GTR

♩ = 155,002716

4

8

13

18

22

28

32

38

41

45

STEEL GTR

50

54

60

63

67

72

76

79

DISTORTION

The Who - Summertime Blues

♩ = 155,002716

7

12

17

21

25

33

38

42

46

53

DISTORTION

57



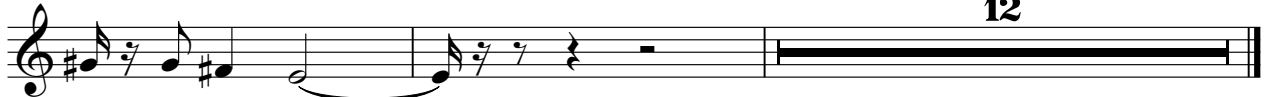
62



66



69



12

The Who - Summertime Blues

CLEAN GTR

♩ = 155,002716

4

8

13

18

24

30

35

40

46

52

Detailed description: This is a guitar score for the song 'Summertime Blues' by The Who, specifically for a clean guitar part. The score is written in standard musical notation on a single staff. It begins with a tempo marking of 155,002716. The piece starts in 4/4 time. The first line (measures 1-4) features a whole rest followed by a measure with a '4' above it, indicating a four-fret barre. The second line (measures 5-8) contains eighth-note chords with a '2' above the final measure. The third line (measures 9-12) includes a triplet of eighth notes and a '3' below the bracket. The fourth line (measures 13-17) continues with eighth-note chords and a '2' above the second measure. The fifth line (measures 18-23) is in 2/4 time, showing a steady eighth-note rhythm. The sixth line (measures 24-29) returns to 4/4 time, featuring a triplet of eighth notes and a '3' below the bracket. The seventh line (measures 30-34) has eighth-note chords with a '2' above the second measure. The eighth line (measures 35-39) continues with eighth-note chords and a '3' below the bracket. The ninth line (measures 40-45) is in 2/4 time with eighth-note patterns. The tenth line (measures 46-51) returns to 4/4 time with a triplet of eighth notes and a '3' below the bracket. The final line (measures 52-55) concludes with eighth-note chords and a '2' above the final measure.

56

2

61

66

2

72

75

78

80

NYLON GTR

The Who - Summertime Blues

♩ = 155,002716

4

8

13

18

24

30

35

40

46

52



PICK BASS

The Who - Summertime Blues

♩ = 155,002716

2

7

11

15

19

24

29

33

37

40

44



49



53



57



61



66



71



75



79

