

# Unknown - Elvis

$\text{♩} = 136,000153$

\*DRUMS

$\text{♩} = 136,000153$

\*9

5

\*DRUMS

\*9

9

\*1

\*DRUMS

\*9

13

\*1

\*DRUMS

\*9

16

\*1

\*DRUMS

\*9

Detailed description: This system covers measures 16, 17, and 18. The top staff (treble clef) shows a melodic line with eighth and sixteenth notes, including a triplet in measure 17. The middle staff (drums) shows a consistent rhythmic pattern of eighth notes. The bottom staff (bass clef) provides a bass line with eighth and sixteenth notes, including a triplet in measure 17.

19

\*1

\*DRUMS

\*9

Detailed description: This system covers measures 19, 20, and 21. The top staff (treble clef) continues the melodic line with eighth and sixteenth notes. The middle staff (drums) maintains the eighth-note pattern. The bottom staff (bass clef) continues the bass line with eighth and sixteenth notes.

22

\*1

\*DRUMS

\*9

Detailed description: This system covers measures 22, 23, 24, and 25. The top staff (treble clef) features a triplet of eighth notes in measure 23. The middle staff (drums) continues the eighth-note pattern. The bottom staff (bass clef) continues the bass line with eighth and sixteenth notes.

26

\*1

\*DRUMS

\*9

Detailed description: This system covers measures 26, 27, 28, and 29. The top staff (treble clef) continues the melodic line with eighth and sixteenth notes. The middle staff (drums) maintains the eighth-note pattern. The bottom staff (bass clef) continues the bass line with eighth and sixteenth notes.

30

\*1

\*DRUMS

\*9

33

\*1

\*DRUMS

\*9

36

\*1

\*DRUMS

\*9

40

\*1

\*DRUMS

\*9

44

\*1

\*DRUMS

\*9

Detailed description: This system covers measures 44 to 46. The top staff (treble clef) contains a melodic line with eighth and quarter notes, including rests. The middle staff (drums) shows a rhythmic pattern with quarter notes and eighth notes. The bottom staff (bass clef) features a bass line with quarter and eighth notes.

47

\*1

\*DRUMS

\*9

Detailed description: This system covers measures 47 to 49. The top staff continues the melodic line. The middle staff shows a consistent drum pattern. The bottom staff continues the bass line with various note values and rests.

51

\*DRUMS

\*9

Detailed description: This system covers measures 51 to 53. The top staff is empty. The middle staff shows a drum pattern with quarter and eighth notes. The bottom staff continues the bass line with eighth and quarter notes.

54

\*1

\*DRUMS

\*9

Detailed description: This system covers measures 54 to 56. The top staff features a melodic line with eighth notes and rests, including triplets in measures 55 and 56. The middle staff shows a drum pattern. The bottom staff continues the bass line with quarter and eighth notes.

57

\*1

\*DRUMS

\*9

60

\*1

\*DRUMS

\*9

63

\*1

\*DRUMS

\*9

66

\*1

\*DRUMS

\*9

69

\*1

\*DRUMS

\*9

73

\*1

\*DRUMS

\*9

76

\*1

\*DRUMS

\*9

79

\*1

\*DRUMS

\*9

82

\*1

\*DRUMS

\*9

86

\*1

\*DRUMS

\*9

89

\*1

\*DRUMS

\*9

93

\*1

\*DRUMS

\*9

96

\*1

\*DRUMS

\*9

99

\*1

\*DRUMS

\*9

103

\*1

\*DRUMS

\*9

106

\*1

\*DRUMS

\*9



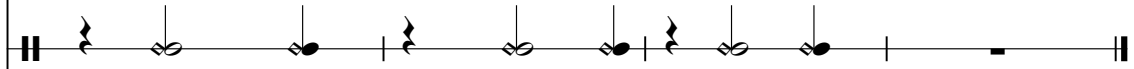
110

\*1



A musical staff in treble clef. It begins with a series of eighth notes: G4, A4, B4, C5, B4, A4, G4. This is followed by a quarter rest, then a quarter note G4 with a slash and a 7, indicating a 7th fret. The staff continues with three measures of whole rests.

\*DRUMS



A drum notation staff. It starts with a double bar line. The first measure contains a snare drum (Z) on the first beat and a bass drum (D) on the second beat. The second measure contains a snare drum on the first beat and a bass drum on the second beat. The third measure contains a snare drum on the first beat and a bass drum on the second beat. The fourth measure contains a snare drum on the first beat and a bass drum on the second beat. The fifth measure contains a snare drum on the first beat and a bass drum on the second beat. The sixth measure contains a snare drum on the first beat and a bass drum on the second beat. The seventh measure contains a snare drum on the first beat and a bass drum on the second beat. The eighth measure contains a snare drum on the first beat and a bass drum on the second beat. The staff ends with a double bar line.

\*9



A musical staff in bass clef. It begins with a series of eighth notes: G2, A2, B2, C3, B2, A2, G2. This is followed by a quarter rest, then a quarter note G2 with a slash and a 7, indicating a 7th fret. The staff continues with three measures of whole rests.

# Unknown - Elvis

\*1

♩ = 136,000153

9

14

18

23

28

33

37

42

46

5

Detailed description: The image shows a musical score for a piece titled 'Unknown - Elvis'. The score is written in 4/4 time and begins with a tempo marking of ♩ = 136,000153. The music is presented in nine staves. The first staff starts with a measure containing a whole note with a '9' above it. The second staff begins at measure 14. The third staff begins at measure 18. The fourth staff begins at measure 23 and includes a triplet of eighth notes. The fifth staff begins at measure 28 and also includes a triplet of eighth notes. The sixth staff begins at measure 33. The seventh staff begins at measure 37 and includes another triplet of eighth notes. The eighth staff begins at measure 42. The ninth staff begins at measure 46 and ends with a five-measure rest, indicated by a '5' above the bar line.



99



103



108



\*DRUMS

Unknown - Elvis

♩ = 136,000153

0

6

12

18

24

30

36

42

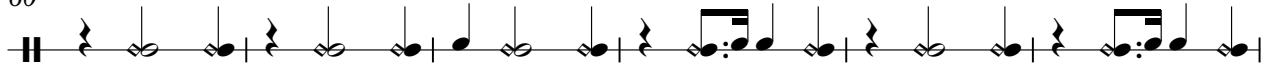
48

54

V.S.

\*DRUMS

60



66



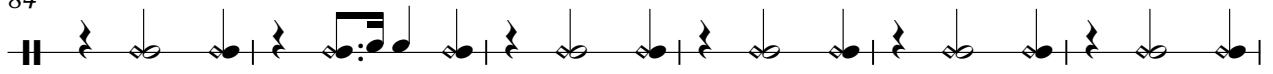
72



78



84



90



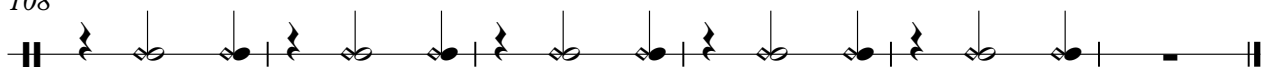
96



102



108



# Unknown - Elvis

\*9

♩ = 136,000153



V.S.

