

Cseremiszi bírcsodal

♩ = 65,000137

SOPRANO

ALTO

TENOR

BASS

6

SOPRANO

ALTO

TENOR

BASS

10

SOPRANO

ALTO

TENOR

BASS

14

SOPRANO

ALTO

TENOR

BASS

This system of music covers measures 14 through 17. It features four vocal staves: Soprano, Alto, Tenor, and Bass. The key signature is three flats (B-flat, E-flat, A-flat), and the time signature is 4/4. The Soprano part begins with a dotted quarter note followed by eighth notes. The Alto part consists of quarter notes. The Tenor part has a steady eighth-note accompaniment. The Bass part provides a harmonic foundation with a mix of quarter and eighth notes.

18

SOPRANO

ALTO

TENOR

BASS

This system of music covers measures 18 through 21. It features four vocal staves: Soprano, Alto, Tenor, and Bass. The key signature is three flats, and the time signature is 4/4. The Soprano part continues with quarter and eighth notes. The Alto part has a more active line with eighth and sixteenth notes. The Tenor part maintains its eighth-note accompaniment. The Bass part continues with a mix of quarter and eighth notes, providing harmonic support.

22

SOPRANO

ALTO

TENOR

BASS

This system of music covers measures 22 through 25. It features four vocal staves: Soprano, Alto, Tenor, and Bass. The key signature is three flats, and the time signature is 4/4. The Soprano part has a more melodic line with quarter and eighth notes. The Alto part has a mix of quarter and eighth notes. The Tenor part continues with eighth notes. The Bass part features a mix of quarter and eighth notes, with some longer note values.

26

SOPRANO

ALTO

TENOR

BASS

29

♩ = 65,000206

SOPRANO

ALTO

TENOR

BASS

33

♩ = 65,000275

SOPRANO

ALTO

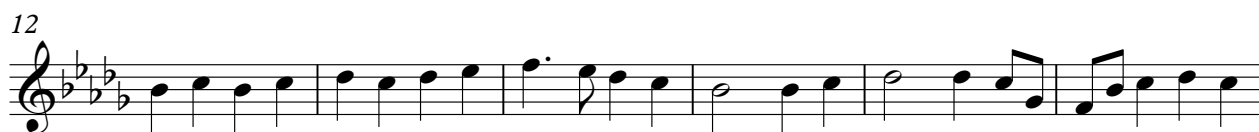
TENOR

BASS

SOPRANO

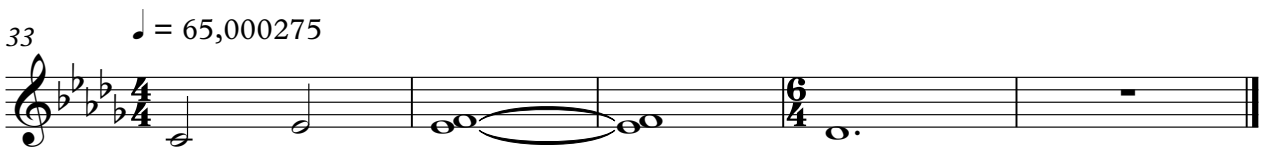
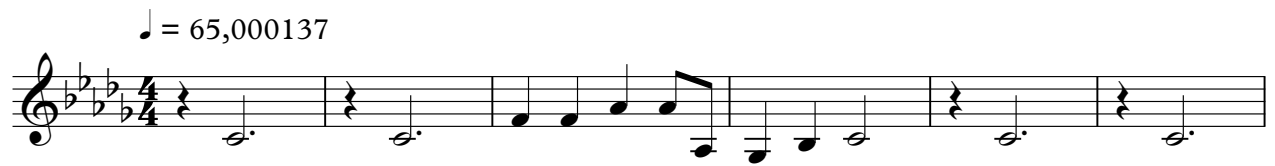
Cseremiszi bílcsodal

♩ = 65,000137



Cseremiszi bílcsodal

ALTO



Cseremiszi bílcsodal

TENOR

♩ = 65,000137

7

12

18

24

29

♩ = 65,000206

33

♩ = 65,000275

Cseremiszi bílcsodal

BASS

♩ = 65,000137

8

13

19

24

♩ = 65,000206

29

♩ = 65,000275

33