

# Sousa, Ubiratan-BIRAFUGANDO

♩ = 100,000000

Flauta Soprano

Flauta Contralto

Flauta Tenor

Flauta Baixo

6

Flauta Soprano

Flauta Contralto

Flauta Tenor

Flauta Baixo

11

Flauta Soprano

Flauta Contralto

Flauta Tenor

Flauta Baixo

16

Flauta Soprano

Flauta Contralto

Flauta Tenor

Flauta Baixo

This system of music covers measures 16 through 20. It features four staves: Flauta Soprano, Flauta Contralto, Flauta Tenor, and Flauta Baixo. The Soprano part begins with a half note G4, followed by quarter notes A4, B4, and C5. The Contralto part has a whole rest in measure 16, then quarter notes G3, F3, and E3. The Tenor part starts with a quarter rest, followed by a sixteenth-note triplet of G4, A4, and B4, then a half note C5. The Baixo part begins with a quarter note G3, followed by quarter notes F3, E3, and D3.

21

Flauta Soprano

Flauta Contralto

Flauta Tenor

Flauta Baixo

This system of music covers measures 21 through 25. The Soprano part has a quarter rest in measure 21, followed by quarter notes G4, A4, and B4, then a half note C5. The Contralto part has a quarter note G3, followed by quarter notes F3, E3, and D3. The Tenor part has a quarter note G4, followed by quarter notes A4, B4, and C5. The Baixo part has a quarter note G3, followed by quarter notes F3, E3, and D3.

26

Flauta Soprano

Flauta Contralto

Flauta Tenor

Flauta Baixo

This system of music covers measures 26 through 30. The Soprano part has a quarter note G4, followed by quarter notes A4, B4, and C5. The Contralto part has a quarter note G3, followed by quarter notes F3, E3, and D3. The Tenor part has a quarter note G4, followed by quarter notes A4, B4, and C5. The Baixo part has a quarter note G3, followed by quarter notes F3, E3, and D3.

31

Flauta Soprano

Flauta Contralto

Flauta Tenor

Flauta Baixo

This system of music covers measures 31 through 36. It features four staves for different flute parts: Flauta Soprano, Flauta Contralto, Flauta Tenor, and Flauta Baixo. The Flauta Soprano part has a melodic line with eighth and sixteenth notes. The other parts provide harmonic support with various rhythmic patterns and rests.

37

Flauta Soprano

Flauta Contralto

Flauta Tenor

Flauta Baixo

This system of music covers measures 37 through 41. The Flauta Baixo part has a more active role with a sixteenth-note run in measure 40. The Flauta Tenor part has a melodic line with some accidentals. The other parts continue with their respective parts.

42

Flauta Soprano

Flauta Contralto

Flauta Tenor

Flauta Baixo

This system of music covers measures 42 through 46. The Flauta Soprano part has a melodic line with some rests. The Flauta Tenor part has a melodic line with some accidentals. The other parts continue with their respective parts.

48

Flauta Soprano

Flauta Contralto

Flauta Tenor

Flauta Baixo

This system of music covers measures 48 to 52. It features four staves: Flauta Soprano (treble clef), Flauta Contralto (treble clef), Flauta Tenor (treble clef), and Flauta Baixo (treble clef). The Soprano part has a melodic line with some chromaticism. The Contralto part has a more active, rhythmic line. The Tenor and Baixo parts provide harmonic support with simpler, sustained notes.

53

Flauta Soprano

Flauta Contralto

Flauta Tenor

Flauta Baixo

This system of music covers measures 53 to 56. The Soprano part has a rest in measure 53 and then a melodic line. The Contralto part has a very active, fast-moving line with many sixteenth notes. The Tenor and Baixo parts have more rhythmic, eighth-note patterns.

57

Flauta Soprano

Flauta Contralto

Flauta Tenor

Flauta Baixo

This system of music covers measures 57 to 59. The Soprano part has a melodic line. The Contralto part has a very active, fast-moving line with many sixteenth notes. The Tenor and Baixo parts have more rhythmic, eighth-note patterns.

60

Flauta Soprano

Flauta Contralto

Flauta Tenor

Flauta Baixo

This system of music covers measures 60 to 63. The Soprano part begins with a treble clef, a key signature of one sharp (F#), and a 7/8 time signature. It features a melodic line with eighth and sixteenth notes. The Contralto part is in the same key and time, with a more rhythmic pattern. The Tenor part is in a bass clef with a key signature of one flat (Bb) and a 7/8 time signature, providing a harmonic foundation. The Baixo part is in a bass clef with a key signature of one sharp (F#) and a 7/8 time signature, featuring a steady eighth-note accompaniment.

64

Flauta Soprano

Flauta Contralto

Flauta Tenor

Flauta Baixo

This system of music covers measures 64 to 67. The Soprano part continues its melodic development with various rhythmic patterns. The Contralto part has a more active role with sixteenth-note passages. The Tenor part maintains its harmonic support with eighth notes and rests. The Baixo part continues its accompaniment with eighth notes and some rests.

68

Flauta Soprano

Flauta Contralto

Flauta Tenor

Flauta Baixo

This system of music covers measures 68 to 71. The Soprano part features a melodic line with eighth notes and rests. The Contralto part has a more active role with sixteenth-note passages. The Tenor part maintains its harmonic support with eighth notes and rests. The Baixo part continues its accompaniment with eighth notes and some rests.

72  $\text{♩} = 50,000000$   $\text{♩} = 32,999996$   $\text{♩} = 38,000008$

Flauta Soprano

Flauta Contralto

Flauta Tenor

Flauta Baixo

76  $\text{♩} = 45,000011$   $\text{♩} = 50,000000$   $\text{♩} = 100,000000$

Flauta Soprano

Flauta Contralto

Flauta Tenor

Flauta Baixo

81

Flauta Soprano

Flauta Contralto

Flauta Tenor

Flauta Baixo

86

Flauta Soprano

Flauta Contralto

Flauta Tenor

Flauta Baixo

This system of music covers measures 86 to 90. The Soprano flute part begins with a melodic line of eighth notes in measure 86, followed by a half note in measure 87, and then a series of eighth notes in measures 88, 89, and 90. The Contralto flute part has a rest in measure 86, followed by a half note in measure 87, and then a complex eighth-note pattern in measures 88, 89, and 90. The Tenor flute part starts with a half note in measure 86, followed by a half note in measure 87, and then eighth notes in measures 88, 89, and 90. The Baixo flute part plays eighth notes in measure 86, followed by a half note in measure 87, and then eighth notes in measures 88, 89, and 90.

91

Flauta Soprano

Flauta Contralto

Flauta Tenor

Flauta Baixo

This system of music covers measures 91 to 95. The Soprano flute part plays eighth notes in measure 91, followed by a half note in measure 92, and then eighth notes in measures 93, 94, and 95. The Contralto flute part plays eighth notes in measure 91, followed by eighth notes in measure 92, and then eighth notes in measures 93, 94, and 95. The Tenor flute part plays eighth notes in measure 91, followed by a half note in measure 92, and then eighth notes in measures 93, 94, and 95. The Baixo flute part plays eighth notes in measure 91, followed by a half note in measure 92, and then eighth notes in measures 93, 94, and 95.

96

Flauta Soprano

Flauta Contralto

Flauta Tenor

Flauta Baixo

This system of music covers measures 96 to 100. The Soprano flute part plays a half note in measure 96, followed by eighth notes in measure 97, a half note in measure 98, eighth notes in measure 99, and a half note in measure 100. The Contralto flute part has a half note in measure 96, followed by a half note in measure 97, eighth notes in measure 98, a half note in measure 99, and eighth notes in measure 100. The Tenor flute part plays eighth notes in measure 96, followed by a half note in measure 97, eighth notes in measure 98, a half note in measure 99, and eighth notes in measure 100. The Baixo flute part plays eighth notes in measure 96, followed by a half note in measure 97, eighth notes in measure 98, a half note in measure 99, and eighth notes in measure 100.

101

Flauta Soprano

Flauta Contralto

Flauta Tenor

Flauta Baixo

This musical system covers measures 101 to 105. The Soprano part begins with a whole rest in measure 101, followed by a melodic line. The Contralto part has a whole rest in measure 101 and a more active line. The Tenor part has a whole rest in measure 101 and a melodic line. The Baixo part has a whole rest in measure 101 and a melodic line. A large slur is present over measures 104 and 105 in the Soprano part.

106

Flauta Soprano

Flauta Contralto

Flauta Tenor

Flauta Baixo

This musical system covers measures 106 to 110. The Soprano part has a melodic line with some grace notes. The Contralto part has a melodic line with grace notes. The Tenor part has a melodic line with grace notes. The Baixo part has a melodic line with grace notes.

111

Flauta Soprano

Flauta Contralto

Flauta Tenor

Flauta Baixo

This musical system covers measures 111 to 115. The Soprano part has a melodic line. The Contralto part has a melodic line. The Tenor part has a melodic line. The Baixo part has a melodic line.



117

Flauta Soprano

Flauta Contralto

Flauta Tenor

Flauta Baixo

This musical system covers measures 117 to 121. It features four staves for flute parts: Soprano, Contralto, Tenor, and Baixo. The Soprano part begins with a melodic line in the key of D major. The Contralto part provides harmonic support with chords and moving lines. The Tenor part has a more active role with eighth-note patterns. The Baixo part provides a steady bass line with some melodic movement in the lower register.

122

Flauta Soprano

Flauta Contralto

Flauta Tenor

Flauta Baixo

This musical system covers measures 122 to 126. The Soprano part continues its melodic development with some syncopation. The Contralto part has a more rhythmic and harmonic focus. The Tenor part features a prominent eighth-note pattern. The Baixo part maintains a solid bass line with occasional melodic accents.

128

Flauta Soprano

Flauta Contralto

Flauta Tenor

Flauta Baixo

This musical system covers measures 128 to 132. The Soprano part has a more active melodic line. The Contralto part continues with complex harmonic textures. The Tenor part has a steady eighth-note accompaniment. The Baixo part provides a consistent bass line with some melodic movement.

133

Flauta Soprano

Flauta Contralto

Flauta Tenor

Flauta Baixo

137

Flauta Soprano

Flauta Contralto

Flauta Tenor

Flauta Baixo

140

Flauta Soprano

Flauta Contralto

Flauta Tenor

Flauta Baixo

144

Flauta Soprano

Flauta Contralto

Flauta Tenor

Flauta Baixo

This system of music covers measures 144 to 147. The Flauta Soprano part begins with a melodic line in measure 144, followed by a rest in 145, and then a more active line in 146 and 147. The Flauta Contralto part has a melodic line in 144, followed by a busy eighth-note pattern in 145, and then rests in 146 and 147. The Flauta Tenor part plays a steady eighth-note accompaniment throughout. The Flauta Baixo part provides a bass line with eighth notes and rests.

148

Flauta Soprano

Flauta Contralto

Flauta Tenor

Flauta Baixo

This system of music covers measures 148 to 151. The Flauta Soprano part has a melodic line in 148, followed by a busy eighth-note pattern in 149, and then rests in 150 and 151. The Flauta Contralto part has a melodic line in 148, followed by a busy eighth-note pattern in 149, and then rests in 150 and 151. The Flauta Tenor part plays a steady eighth-note accompaniment throughout. The Flauta Baixo part provides a bass line with eighth notes and rests.

152

Flauta Soprano

Flauta Contralto

Flauta Tenor

Flauta Baixo

This system of music covers measures 152 to 155. The Flauta Soprano part has a melodic line in 152, followed by a busy eighth-note pattern in 153, and then rests in 154 and 155. The Flauta Contralto part has a melodic line in 152, followed by a busy eighth-note pattern in 153, and then rests in 154 and 155. The Flauta Tenor part plays a steady eighth-note accompaniment throughout. The Flauta Baixo part provides a bass line with eighth notes and rests.

156

Flauta Soprano

Flauta Contralto

Flauta Tenor

Flauta Baixo

This musical system covers measures 156 to 160. The Soprano part features a melodic line with eighth-note patterns and rests. The Contralto part has a more rhythmic, eighth-note accompaniment. The Tenor part provides a steady accompaniment with eighth notes and rests. The Baixo part has a bass line with eighth notes and rests. The key signature has one flat (B-flat), and the time signature is 4/4.

161

Flauta Soprano

Flauta Contralto

Flauta Tenor

Flauta Baixo

This musical system covers measures 161 to 165. The Soprano part continues with a melodic line, including a triplet of eighth notes in measure 161. The Contralto part has a rhythmic accompaniment with eighth notes and rests. The Tenor part has a steady accompaniment with eighth notes and rests. The Baixo part has a bass line with eighth notes and rests. The key signature has one flat (B-flat), and the time signature is 4/4.

165

Flauta Soprano

Flauta Contralto

Flauta Tenor

Flauta Baixo

This musical system covers measures 165 to 170. The Soprano part features a melodic line with eighth-note patterns and rests. The Contralto part has a rhythmic accompaniment with eighth notes and rests. The Tenor part has a steady accompaniment with eighth notes and rests. The Baixo part has a bass line with eighth notes and rests. The key signature has one flat (B-flat), and the time signature is 4/4.

170

Flauta Soprano

Flauta Contralto

Flauta Tenor

Flauta Baixo

This system of music covers measures 170 to 174. The Soprano flute part is the most active, featuring eighth-note patterns and a melodic line with a sharp sign. The Contralto flute part provides a steady accompaniment with quarter notes. The Tenor flute part follows a similar pattern to the Contralto but with some chromatic movement. The Baixo flute part has a more melodic and rhythmic role, including some sixteenth-note passages.

175

Flauta Soprano

Flauta Contralto

Flauta Tenor

Flauta Baixo

This system of music covers measures 175 to 179. The Soprano flute part continues with eighth-note patterns and includes a section with sixteenth-note runs. The Contralto flute part features a rhythmic pattern of eighth notes with rests. The Tenor flute part has a similar rhythmic pattern to the Contralto. The Baixo flute part has a more complex rhythmic pattern with sixteenth notes and rests.

180

Flauta Soprano

Flauta Contralto

Flauta Tenor

Flauta Baixo

This system of music covers measures 180 to 184. The Soprano flute part has a melodic line with eighth notes and rests. The Contralto flute part has a steady accompaniment with quarter notes and rests. The Tenor flute part has a melodic line with eighth notes and rests. The Baixo flute part has a melodic line with eighth notes and rests, including a section with sixteenth notes.

184

Flauta Soprano

Flauta Contralto

Flauta Tenor

Flauta Baixo

# Sousa, Ubiratan-BIRAFUGANDO

Flauta Soprano

♩ = 100,000000

2

10

19

28

36

45

55

62

68

♩ = 50,000000 ♩ = 32,999996

75

♩ = 38,000008 ♩ = 45,000011 ♩ = 50,000000 ♩ = 100,000000

V.S.

83

2

93

102

110

118

127

136

143

148

154



160



167



174



181



# Sousa, Ubiratan-BIRAFUGANDO

Flauta Contralto

♩ = 100,000000

10

19

27

37

46

54

61

70

♩ = 50,000000 ♩ = 32,999996 = 38,000000 = 38,000000 = 38,000000 = 50,000000

78

♩ = 100,000000



172



180



# Sousa, Ubiratan-BIRAFUGANDO

Flauta Tenor

♩ = 100,000000

10

18

26

36

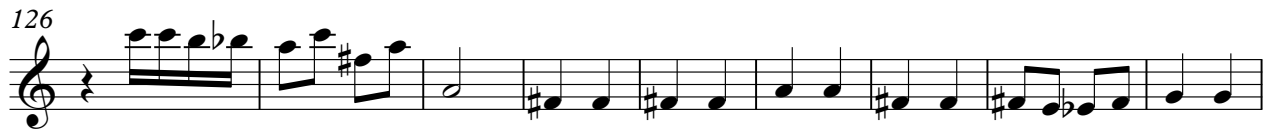
46

55

65

73 ♩ = 50,000000 ♩ = 32,999996 ♩ = 38,000008 ♩ = 45,000011

77 ♩ = 50,000000 ♩ = 100,000000



170



179



183



# Sousa, Ubiratan-BIRAFUGANDO

Flauta Baixo

♩ = 100,000000

10

19

28

38

48

56

64

72

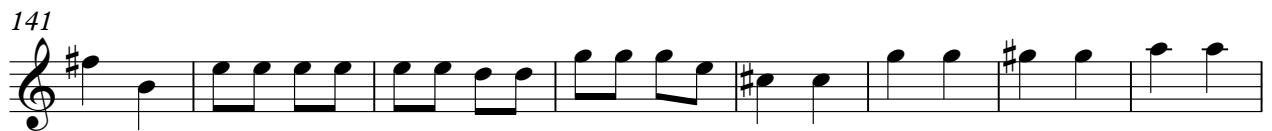
78

♩ = 50,000000 ♩ = 32,999996 ♩ = 38,000008 ♩ = 45,000011 ♩ = 50,000000

♩ = 100,000000

V.S.





174



181

