

THE NUMBER OF THE BEAST

IRON MAIDEN

STANDARD TUNING

♩ = 200

PRESS F5 TO SEE NOTES ON VIEW.

INTRO

FLANGER

1 PM-----| PM. PM. PM.-| PM.-| PM.-----| PM.-| PM.-----| PM. PM.

E-GT

VERSE 1

4 PM-----| PM.-----| PM.-----| PM.-----| PM.-----| PM. PM.

6 PM.-----| PM.-----| PM.-----| PM.-----| PM.-----| PM. PM.

8 PM.-| PM.-| PM.-----| PM.-| PM.-| PM. PM. PM.-----| PM.-| PM.-| PM.-----| PM.-| PM.-| PM. PM.

VERSE 2

12 PM.-| PM.-| PM.-----| PM.-| PM.-| PM. PM. PM.-----| PM.-| PM.-| PM.-----| PM.-| PM.-| PM. PM.

16 PM.-| PM.-| PM.-----| PM.-| PM.-| PM. PM. PM.-----| PM.-| PM.-| PM.-----| PM.-| PM.-| PM. PM.

20 PM.-| PM.-| PM.-----| PM.-| PM.-| PM. PM. PM.-----| PM.-| PM.-| PM.-----| PM.-| PM.-| PM. PM.

24 PM.-| PM.-| PM.-----| PM.-| PM.-| PM. PM. PM.-----| PM.-|

BRIDGE

BLUES LEAD OVERDRIVE

28

Musical notation for bridge measure 28. It consists of a single staff with a 4/4 time signature. The first half of the measure contains a power chord (5) with a 7th fret barre indicated by a bracket above the staff. The second half of the measure is in 3/4 time and contains a sequence of notes: 7, 7, 7, 7, 5, with a tremolo symbol over the final 5. The measure concludes with a 4/4 time signature and a power chord (5) with a 7th fret barre.

32

Musical notation for bridge measure 32. It consists of a single staff. The first half of the measure contains a power chord (5) with a 7th fret barre. The second half of the measure is in 3/4 time and contains a sequence of notes: 5, 5, 5, 5, with a tremolo symbol over the final 5. The measure concludes with a 4/4 time signature and a power chord (5) with a 7th fret barre.

35

Musical notation for bridge measure 35. It consists of a single staff. The first half of the measure contains a power chord (5) with a 7th fret barre. The second half of the measure is in 3/4 time and contains a sequence of notes: 7, 7, 7, 7, 5, with a tremolo symbol over the final 5. The measure concludes with a 5/4 time signature and a power chord (5) with a 7th fret barre.

VERSE 3

39

Musical notation for verse 3 measure 39. It consists of a single staff with a 4/4 time signature. The measure is divided into four measures, each with a 'P.M. - |' marking above it. The notes are: 7-7-7-7-5-5-7-7, 7-7-5-5-7-7-7-7, 5-7-7-7-5-5-7-7, and 7-7-5-5-7-7-7-7.

43

Musical notation for verse 3 measure 43. It consists of a single staff with a 4/4 time signature. The measure is divided into four measures, each with a 'P.M. - |' marking above it. The notes are: 5-7-7-7-5-5-7-7, 7-7-5-5-7-7-7-7, 2-3-3-3-3-2, and 7-7-5-5-7-7-7-7.

47

Musical notation for verse 3 measure 47. It consists of a single staff with a 4/4 time signature. The measure is divided into four measures, each with a 'P.M. - |' marking above it. The notes are: 7-7-7-7-5-5-7-7, 7-7-5-5-7-7-7-7, 5-7-7-7-5-5-7-7, and 7-7-5-5-7-7-7-7.

51

Musical notation for verse 3 measure 51. It consists of a single staff with a 4/4 time signature. The measure is divided into four measures, each with a 'P.M. - |' marking above it. The notes are: 5-7-7-7-5-5-7-7, 7-7-5-5-7-7-7-7, 2-3-3-3-3-2, and 7-7-7-7-7-7-7-7.

CHORUS

55

Musical notation for chorus measure 55. It consists of a single staff with a 4/4 time signature. The measure is divided into four measures, each with a 'P.M. - |' marking above it. The notes are: (5) 5-5-5-5-5-5, (5) 5-5-5-5-5-5, (5) 5-5-5-5-5-5, and (7) 7-7-7-7-7-7.

59

Musical notation for chorus measure 59. It consists of a single staff with a 4/4 time signature. The measure is divided into four measures, each with a 'P.M. - |' marking above it. The notes are: (5) 5-5-5-5-5-5, (5) 5-5-5-5-5-5, (5) 5-5-5-5-5-5, and 7-7-7-7-5-5-7-7.

VERSE

64

Musical notation for verse measure 64. It consists of a single staff with a 4/4 time signature. The measure is divided into four measures, each with a 'P.M. - |' marking above it. The notes are: 7-7-7-7-5-5-7-7, 7-7-5-5-7-7-7-7, 5-7-7-7-5-5-7-7, and 7-7-5-5-7-7-7-7.

68 P.M. - 4 P.M. - 4 P.M. - 4

72 P.M. - 4 P.M. - 4 P.M. - 4 P.M. - 4

76 P.M. - 4 P.M. - 4

CHORUS

80

83

87

89 LET RING LET RING

91

93

BLUES L 0 2
Bb

95

Solo 2

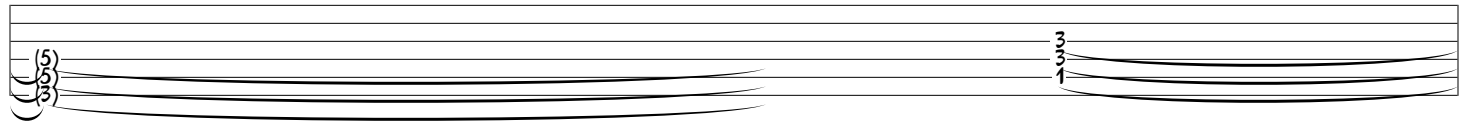
123



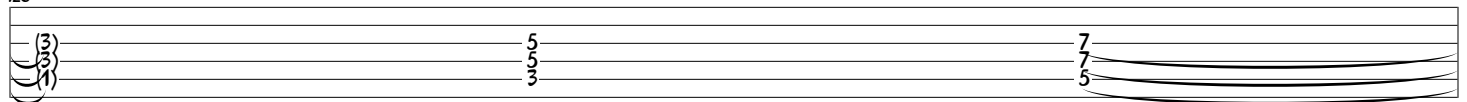
124



125



126



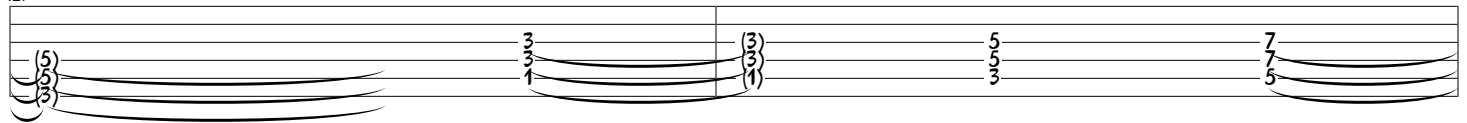
127



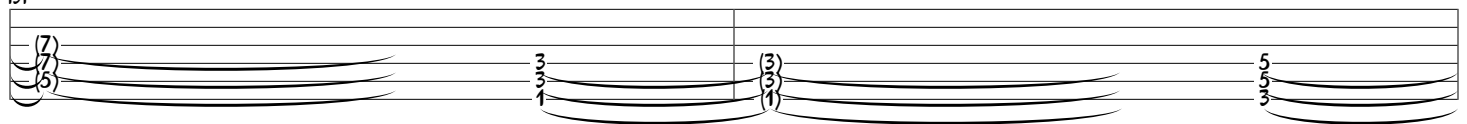
128



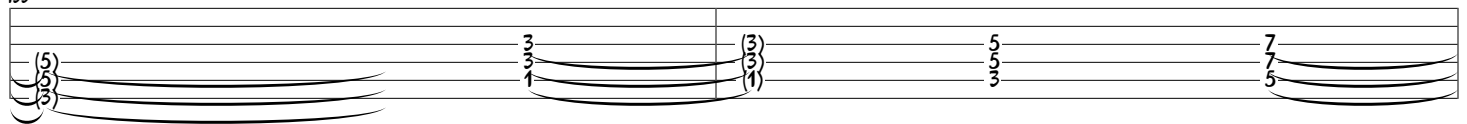
129



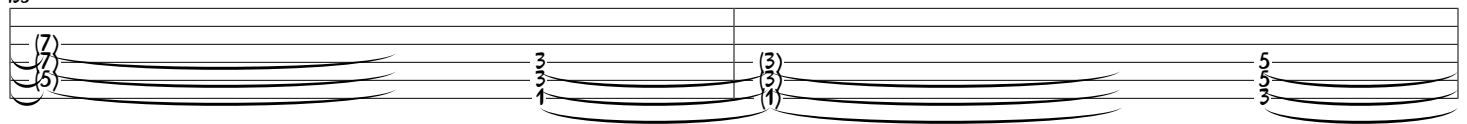
131



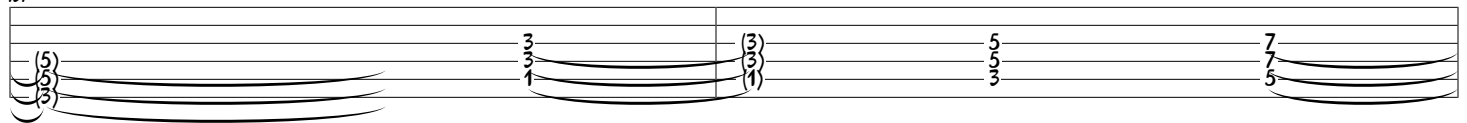
133



135



137



176 P.M. - - | P.M. - - | P.M. - - - - - | P.M. - - | P.M. - - - - | P.M. P.M. P.M. - - | P.M. - - | P.M.

179 P.M. P.M. - - - | P.M. - - - - - | P.M. P.M. P.M. - - - - | P.M. - - - - | P.M.

181 P.M. P.M. - - | P.M. - - - - | P.M. P.M. P.M. - - - - - | P.M. - - | P.M. - - | P.M. - - - - - | P.M. - - | P.M. - - - - | P.M. P.M.

184 P.M. - - | P.M. - - | P.M. - - - - - | P.M. - - | P.M. - - - - | P.M. P.M. P.M. - - | P.M. - - | P.M.

OUTRO

P.M. P.M. - - - - -

BLUES LEAD OVERDRIVE

187

189

192

195

198