

Elvis - Anyway You Want Me

$\text{♩} = 80,000000$

Melodie

drums

piano

bass

$\text{♩} = 80,000000$

chor

4

Melodie

drums

piano

bass

chor

7

Melodie

drums

piano

bass

chor

10

Melodie

drums

piano

bass

chor

13

Melodie

drums

piano

bass

chor

16

Melodie

drums

piano

bass

chor

19

Melodie

drums

piano

bass

chor

22

Melodie

drums

piano

bass

chor

25

Melodie

drums

piano

bass

chor

28

Melodie

drums

piano

bass

chor

31

Melodie

drums

piano

bass

chor

34

Melodie

drums

piano

bass

chor

37

Melodie

drums

piano

bass

chor

39

Melodie

drums

piano

bass

chor

Elvis - Anyway You Want Me

Melodie

$\text{♩} = 80,000000$

7

11

16

20

25

29

34

38

Elvis - Anyway You Want Me

drums

♩ = 80,000000

5

9

13

17

21

25

29

33

37

piano

Elvis - Anyway You Want Me

♩ = 80,000000

Measures 1-5 of the piano accompaniment. The music is in 4/4 time and features a mix of chords and melodic lines in both the treble and bass staves.

6

Measures 6-10 of the piano accompaniment. The music continues with a steady rhythm and includes some melodic movement in the treble staff.

12

Measures 11-15 of the piano accompaniment. The bass line is particularly active, providing a strong harmonic foundation.

18

Measures 16-22 of the piano accompaniment. This section features more complex chordal textures and melodic patterns.

23

Measures 23-28 of the piano accompaniment. The music maintains its rhythmic drive while introducing new harmonic elements.

29

Measures 29-33 of the piano accompaniment. The piece continues with a consistent tempo and feel.

34

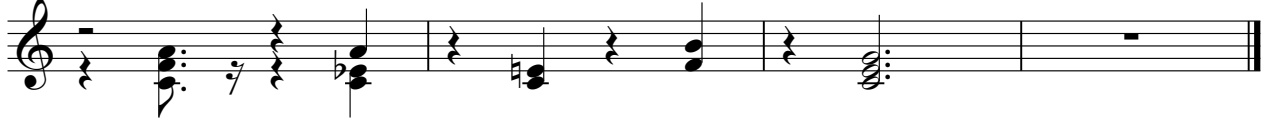
Measures 34-38 of the piano accompaniment. The final measures of this section conclude with a clear harmonic resolution.

V.S.

2

piano

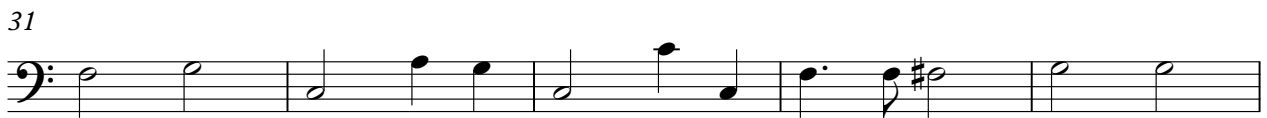
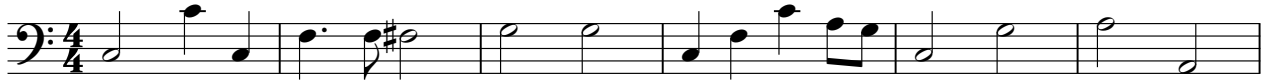
38



Elvis - Anyway You Want Me

bass

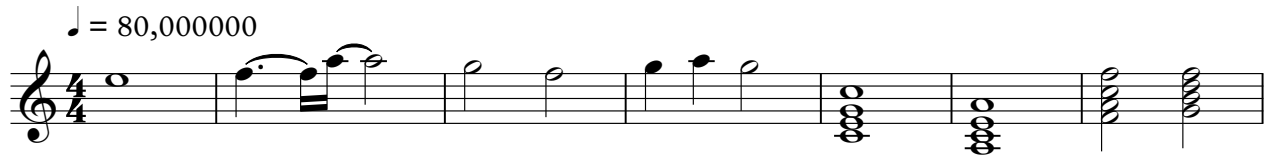
♩ = 80,000000



Elvis - Anyway You Want Me

chor

♩ = 80,000000



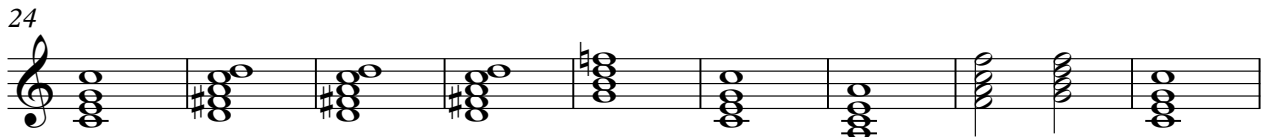
8



16



24



33



37

