

Alien Ant Farm - Quiet

1.7"
2.1,00
intro


♩ = 137,000061

guitar 1




4

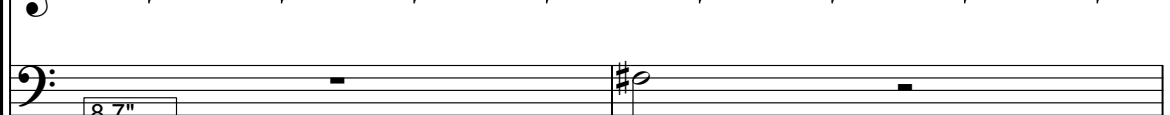
drums



guitar 1



bass



8.7"
6.1,00
verse 1

6

vocals



drums



guitar 1



bass



8

vocals



drums



guitar 1



bass



2003 by Mike

10

vocals

drums

guitar 1

bass

12

vocals

drums

guitar 1

bass

14

vocals

drums

guitar 1

bass

16

vocals

drums

guitar 1

bass

32.4"
19.3,00
pre-chorus

18

vocals

drums

guitar 1

bass

35.6"
21.2,50
chorus

20

vocals

drums

guitar 1

bass

23

vocals
drums
guitar 1
bass

This system contains measures 23, 24, and 25. The vocal line features a melodic line with eighth and quarter notes, including a sharp sign. The drums play a consistent eighth-note pattern. Guitar 1 plays a chordal accompaniment with a key signature change to one flat in measure 25. The bass line follows a similar eighth-note pattern with a sharp sign.

26

vocals
drums
guitar 1
bass

This system contains measures 26, 27, and 28. The vocal line continues with a melodic line, ending with a fermata. The drums play a consistent eighth-note pattern. Guitar 1 plays a chordal accompaniment with a key signature change to one flat in measure 28. The bass line follows a similar eighth-note pattern with a sharp sign.

29

vocals
drums
guitar 1
bass

This system contains measures 29 and 30. The vocal line is silent. The drums play a few notes in measure 29. Guitar 1 plays a complex rhythmic pattern with many slurs. The bass line plays a few notes in measure 29 and then is silent.

31

vocals

drums

guitar 1

guitar 2

bass

Detailed description: This block contains the musical notation for measures 31 and 32. The score is arranged in five staves: vocals, drums, guitar 1, guitar 2, and bass. The key signature has one sharp (F#). The time signature is 7/8. In measure 31, the vocal line has a whole note rest, followed by a half note G4, a quarter note A4, a quarter note B4, a quarter note C5, a quarter note B4, a quarter note A4, and a quarter note G4. The drum line features a complex pattern with a triplet of eighth notes in the first eighth of the measure, followed by a dotted quarter note, a quarter note, and a dotted quarter note. The guitar 1 part consists of a continuous eighth-note strumming pattern. The guitar 2 part has a whole note chord in the first half of the measure, followed by a whole rest, and another whole note chord in the second half. The bass line follows a similar pattern to the vocal line, with a whole note rest followed by a half note G3, a quarter note A3, a quarter note B3, a quarter note C4, a quarter note B3, a quarter note A3, and a quarter note G3.

33

vocals

drums

guitar 1

guitar 2

bass

Detailed description: This block contains the musical notation for measures 33 and 34. The score is arranged in five staves: vocals, drums, guitar 1, guitar 2, and bass. The key signature has one sharp (F#). The time signature is 7/8. In measure 33, the vocal line has a half note G4, a quarter note A4, a quarter note B4, a quarter note C5, a quarter note B4, a quarter note A4, and a quarter note G4. The drum line continues with a similar pattern to measure 31. The guitar 1 part continues with the eighth-note strumming pattern. The guitar 2 part has a whole note chord in the first half of the measure, followed by a whole rest, and another whole note chord in the second half. The bass line continues with a similar pattern to measure 31, with a whole note rest followed by a half note G3, a quarter note A3, a quarter note B3, a quarter note C4, a quarter note B3, a quarter note A3, and a quarter note G3.

35

vocals
drums
guitar 1
guitar 2
bass

This musical score covers measures 35 and 36. The vocal line begins with a whole rest in measure 35, followed by a melodic phrase in measure 36. The drum line features a consistent pattern of snare and bass drum hits. Guitar 1 plays a complex, fast-paced rhythmic pattern with many sixteenth notes. Guitar 2 provides harmonic support with sustained chords and some melodic movement. The bass line follows a similar rhythmic pattern to the drums, with eighth and sixteenth notes.

37

vocals
drums
guitar 1
guitar 2
bass

This musical score covers measures 37 and 38. The vocal line has a melodic phrase in measure 37 and a whole rest in measure 38. The drum line continues with its established pattern. Guitar 1 maintains its intricate rhythmic pattern. Guitar 2 has sustained chords in measure 37 and rests in measure 38. The bass line continues with its rhythmic pattern, including some chromatic movement.

39

vocals

drums

guitar 1

guitar 2

bass

Detailed description: This musical score block covers measures 39 and 40. It features five staves: vocals, drums, guitar 1, guitar 2, and bass. The key signature is one sharp (F#). The vocal line consists of two phrases, each starting with a quarter rest followed by a quarter note, a quarter note with a sharp, and a quarter note. The drum line shows a consistent pattern of eighth notes and quarter notes with 'x' marks indicating muffled hits. Guitar 1 plays a rhythmic pattern of eighth notes with a sharp, while guitar 2 plays a series of chords. The bass line follows a similar rhythmic pattern to the drums, with notes and rests.

41

vocals

drums

guitar 1

guitar 2

bass

Detailed description: This musical score block covers measures 41 and 42. It features five staves: vocals, drums, guitar 1, guitar 2, and bass. The key signature is one sharp (F#). The vocal line continues with a melodic line of quarter notes, some with slurs. The drum line maintains the eighth-note and quarter-note pattern. Guitar 1 plays eighth notes with a sharp, and guitar 2 plays chords. The bass line continues with eighth and quarter notes, including some rests.

43

vocals

drums

guitar 1

guitar 2

bass

1'17.0"
45.1,00
pre-chorus

1'20.3"
46.4,50
chorus

45

vocals

drums

guitar 1

bass

48

vocals

drums

guitar 1

bass

51

vocals
drums
guitar 1
bass

This system contains measures 51, 52, and 53. The vocal line features a melodic sequence of eighth and quarter notes. The drums play a consistent eighth-note pattern. The guitar 1 part consists of a series of chords, and the bass line provides a steady eighth-note accompaniment.

1'34.5"
55.1,00
after-chorus

54

vocals
drums
guitar 1
bass

This system contains measures 54 and 55. The vocal line continues with a melodic line. The drums include some rests marked with an asterisk. The guitar 1 part features a mix of chords and melodic fragments. The bass line continues with eighth-note accompaniment.

56

vocals
drums
guitar 1
bass

This system contains measures 56, 57, and 58. The vocal line concludes with a melodic phrase. The drums have several rests marked with an asterisk. The guitar 1 part includes some melodic runs and chords. The bass line continues with eighth-note accompaniment.

59

vocals

drums

guitar 1

bass

1'48.6"
63.1,00
bridge

62

vocals

drums

guitar 1

bass

65

vocals

drums

guitar 1

bass

68

vocals
drums
guitar 1
bass

This system covers measures 68 to 70. The vocal line starts with a treble clef and a key signature of one sharp (F#). In measure 68, the vocal line has a quarter note G4, a quarter note A4, and a quarter note B4, followed by a quarter rest. The drums play a steady eighth-note pattern. Guitar 1 plays a series of chords and single notes, including a F#m chord. The bass line starts with a quarter rest, followed by a quarter note G2, and continues with a steady eighth-note pattern.

71

vocals
drums
guitar 1
bass

This system covers measures 71 to 73. The vocal line continues with a treble clef and a key signature of one sharp. In measure 71, the vocal line has a quarter note B4, a quarter note C5, a quarter note D5, and a quarter note E5, followed by a quarter note F#5 and a quarter rest. The drums play a steady eighth-note pattern. Guitar 1 plays a series of chords and single notes, including a F#m chord. The bass line continues with a steady eighth-note pattern.

74

vocals
drums
guitar 1
bass

This system covers measures 74 to 76. The vocal line continues with a treble clef and a key signature of one sharp. In measure 74, the vocal line has a quarter rest, followed by a quarter note G4, a quarter note A4, and a quarter note B4. The drums play a steady eighth-note pattern. Guitar 1 plays a series of chords and single notes, including a F#m chord. The bass line continues with a steady eighth-note pattern.

2'16.6"
79.1,00
intro-chorus

77

vocals

drums

guitar 1

bass

2'23.4"
82.4,50
chorus

80

vocals

drums

guitar 1

bass

83

vocals

drums

guitar 1

bass

86

vocals
drums
guitar 1
bass

This system contains measures 86, 87, and 88. The vocal line starts with a treble clef and a key signature of one sharp (F#). The drums are in a 4/4 time signature. The guitar 1 part is in a key signature of one flat (Bb) and features a complex chordal accompaniment. The bass line is in a key signature of one sharp (F#) and provides a steady rhythmic foundation.

89

vocals
drums
guitar 1
bass

This system contains measures 89 and 90. The vocal line continues with the same treble clef and key signature. The drums show some variation in their pattern, including a few measures with asterisks. The guitar 1 part continues with its complex chordal accompaniment, showing some chromatic movement. The bass line remains consistent with the previous system.

2'37.6"
91.1,00
after-chorus

91

vocals
drums
guitar 1
bass

This system contains measures 91, 92, and 93. The vocal line continues with the same treble clef and key signature. The drums continue their pattern. The guitar 1 part shows a change in chordal accompaniment, including a measure with a 7/8 time signature. The bass line continues with the same key signature and rhythmic pattern.

94

vocals

drums

guitar 1

bass

97

vocals

drums

guitar 1

bass

2'51.6"
99.1,00
outro

99

drums

guitar 1

bass

Alien Ant Farm - Quiet

vocals

♩ = 137,000061



2003 by Mike

V.S.

50



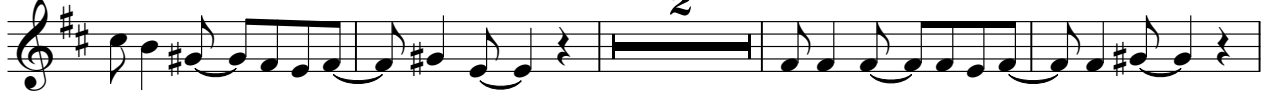
54



58



63



69



75



82



87



91



95



vocals

3

98

A musical score for a vocal line. It begins at measure 98 with a treble clef and a key signature of one sharp (F#). The first measure contains a quarter note on G4, followed by a quarter note on A4, and a half note on B4. The subsequent three measures each contain a whole note on B4. The notation is presented on a single staff with a double bar line at the end of the fourth measure.

Alien Ant Farm - Quiet

drums

♩ = 137,000061

4

8

12

15

19

22

26

2003 by Mike

31

31

34

34

38

38

41

41

45

45

48

48

52

52

55

55

59

59

63

63

Musical score for drums, measures 67-97. The score is written on a grand staff with a treble clef and a 7/8 time signature. It features a complex rhythmic pattern with various note values, rests, and dynamic markings. The notation includes eighth notes, quarter notes, and half notes, often beamed together. There are several asterisks (*) and double asterisks (**) above notes, likely indicating accents or specific drum techniques. A triplet of eighth notes is marked with a '3' and a bracket in measure 76. A large blacked-out section is present in measure 97. The score concludes with a double bar line.

guitar 1

Alien Ant Farm - Quiet

♩ = 137,000061

4

6

8

10

12

14

16

18

21

2003 by Mike

V.S.

25

29

32

34

36

38

40

42

44

47

51

55

59

63

67

71

75

79

82

86

V.S.

4

guitar 1

90

Musical notation for guitar 1, measures 90-93. The notation is in treble clef with a key signature of one sharp (F#). Measure 90 starts with a whole rest, followed by a quarter rest, then a quarter note G4. Measure 91 features a series of eighth notes: G4, A4, B4, C5, B4, A4, G4. Measure 92 consists of a series of eighth notes: G4, A4, B4, C5, B4, A4, G4. Measure 93 features a series of eighth notes: G4, A4, B4, C5, B4, A4, G4, followed by a quarter rest.

94

Musical notation for guitar 1, measures 94-97. The notation is in treble clef with a key signature of one sharp (F#). Measure 94 features a series of eighth notes: G4, A4, B4, C5, B4, A4, G4. Measure 95 features a series of eighth notes: G4, A4, B4, C5, B4, A4, G4. Measure 96 features a series of eighth notes: G4, A4, B4, C5, B4, A4, G4. Measure 97 features a series of eighth notes: G4, A4, B4, C5, B4, A4, G4.

98

Musical notation for guitar 1, measures 98-99. The notation is in treble clef with a key signature of one sharp (F#). Measure 98 features a series of eighth notes: G4, A4, B4, C5, B4, A4, G4. Measure 99 features a series of eighth notes: G4, A4, B4, C5, B4, A4, G4.

100

Musical notation for guitar 1, measures 100-101. The notation is in treble clef with a key signature of one sharp (F#). Measure 100 features a series of eighth notes: G4, A4, B4, C5, B4, A4, G4. Measure 101 features a series of eighth notes: G4, A4, B4, C5, B4, A4, G4, followed by a quarter rest.

guitar 2

Alien Ant Farm - Quiet

♩ = 137,000061

30

Musical notation for guitar 2, measures 27-30. Measure 27 is a whole rest. Measures 28-30 contain a melodic line with eighth notes and slurs.

34

Musical notation for guitar 2, measures 31-34. Measures 31-34 contain a melodic line with eighth notes and slurs.

39

Musical notation for guitar 2, measures 35-39. Measures 35-39 contain a melodic line with eighth notes and slurs.

44

54

Musical notation for guitar 2, measures 40-54. Measure 40 contains a melodic line with eighth notes and slurs. Measures 41-54 are a whole rest.

2003 by Mike

Alien Ant Farm - Quiet

bass

♩ = 137,000061

4



8



12



16



20



24



27



2003 by Mike

71



75



79



83



87



91



95



98

