

2

Ten. Sax.

Perc.

E. Gtr.

E. Bass

Tape Smp. Brs

Pad 7

3

Ten. Sax.

Perc.

E. Gtr.

E. Bass

Tape Smp. Brs

Pad 7

5

Ten. Sax.

Perc.

E. Gtr.

E. Bass

Tape Smp. Brs

Pad 7

6

Ten. Sax.

Perc.

E. Gtr.

E. Bass

Tape Smp. Brs

Pad 7

7

Ten. Sax.

Perc.

E. Gtr.

E. Bass

Tape Smp. Brs

Pad 7

9

Ten. Sax.

Perc.

E. Gtr.

E. Bass

Tape Smp. Brs

Pad 7

10

Ten. Sax.

Perc.

E. Gtr.

E. Bass

Tape Smp. Brs

Pad 7

11

Ten. Sax.

Perc.

E. Gtr.

E. Bass

Tape Smp. Brs

Pad 7

13

Ten. Sax.

Perc.

E. Gtr.

E. Bass

Tape Smp. Brs

Pad 7

14

Ten. Sax.

Perc.

E. Gtr.

E. Bass

Tape Smp. Brs

Pad 7

15

Ten. Sax.

Perc.

E. Gtr.

E. Bass

Tape Smp. Brs

Pad 7

16

Ten. Sax.

Perc.

E. Gtr.

E. Bass

Tape Smp. Brs

Pad 7

Tenor Saxophone

♩ = 140,000137

3

5

7

9

11

13

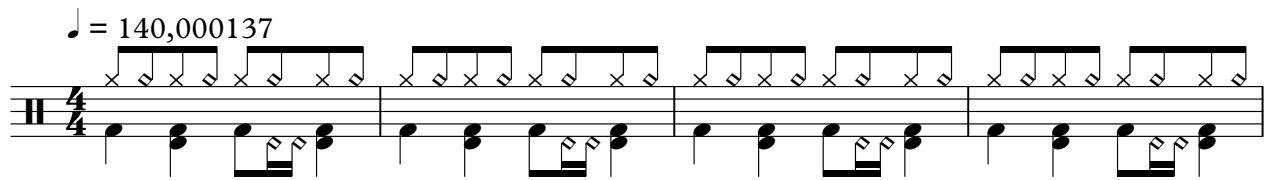
15

2

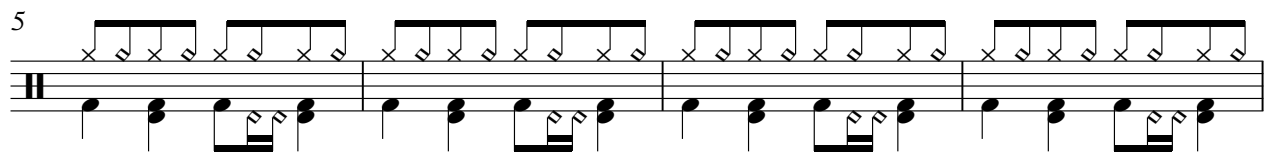
Detailed description: This image shows a musical score for Tenor Saxophone, consisting of eight staves of music. The first staff begins with a tempo marking '♩ = 140,000137' and a key signature of two sharps (F# and C#). The music is written in 4/4 time and features a complex, rhythmic pattern of chords and single notes. The subsequent staves are numbered 3, 5, 7, 9, 11, 13, and 15, indicating the starting measure of each line. The notation includes various accidentals (sharps, flats, naturals) and rests. The final staff (measure 15) ends with a double bar line and a fermata, with a '2' written above the staff, possibly indicating a second ending or a specific performance instruction.

Percussion

♩ = 140,000137



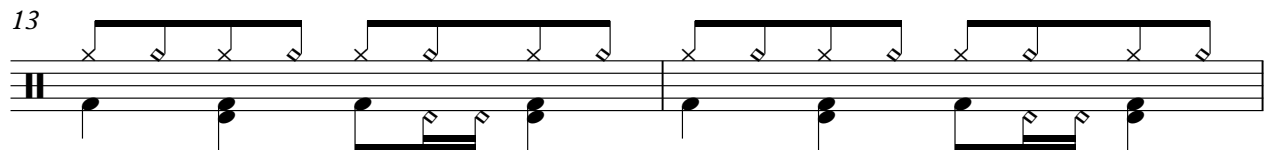
5



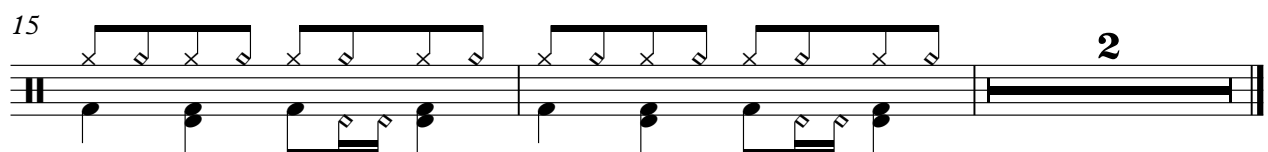
9



13

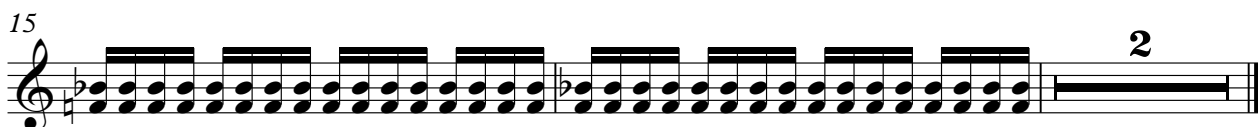


15



Tape Sampler Keyboard [Brass]

♩ = 140,000137



Pad 7 (Halo)

♩ = 140,000137

