

Chamber The Cartridge

Rise Against
The Sufferer and the Witness

Words by Tim McIlrath

Music by Rise Against

Standard tuning

Moderate ♩ = 164

Intro

E-Gt  1

 7 14 21

Verse

 27

f Down be-yond these ci-ty streets, through gut- ters filled with black de-bris, in al- leys void of an- y light, where

 30

nameless things live out of sight. Down through the scrapers of the sky, past ne- on words glow-ing all night Ech- oes by names be-tween each

Pre-Chorus

 34

car, are you hap- py where you are? Blind to this im- pend- ing fate, we let the

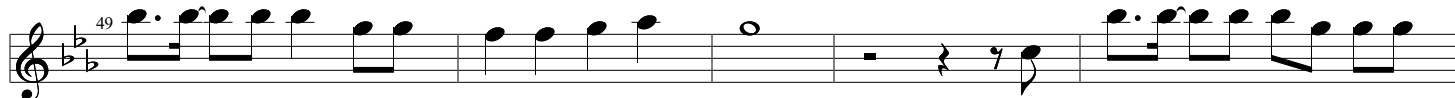
 38

world car- ry our weight. It's back breaks with eve- ry mile, but we all live in de-

Chorus



nial! Can we be sav- ed? Has the dam- age all been done?



Is it too late to re- verse what we've be- come? A les- son to lea- rn at a

Interlude



cru- cial point in time. What's mine was al- ways yours andyours is mine...

Verse



And so we car- ry on each day, as if our lifes are not so grey,whileeve- ry breath that we



take we on- ly suf- fo- cate. Brush past a my- ri- ad of scenes; a home- less vet crashed on

Pre-Chorus



Wall Street, A sin- gle mum of three, a T- V per- son- al- i- ty! Blind to this im- pen- ding



fate, they let the world car- ry their weight. It's back breaks with eve- ry

Chorus



mile, but they all live in den- ial! Can we be sav- ed? Has the

80
dam- age all been done? Is it too late to re- verse what we've be- come?

86
A les- son to lea- rn at a cru- cial point in time. What's

Bridge

91
mine was al- wa- ys yours and yours is mine...

97
Sa- ve us, fr- om what we have be- come to- night... Ey- es glazed

102
with dis- trust, No sense of wrong o- r right. Sa- ve us, fr- om what
♩ = 164 *accel.* ----- ♩ = 172

107
we have be- come to- night... Ey- es glazed with dis- trust, No sense of

112
wrong o- r right. Sa- ve us, fr- om what we have be- come to- night...

117
Ey- es glazed with dis- trust, No sense of wrong o- r right.
♩ = 172 *rall.* ----- ♩ = 164
Interlude

123
Can we be saved? Has the dam- age all been

